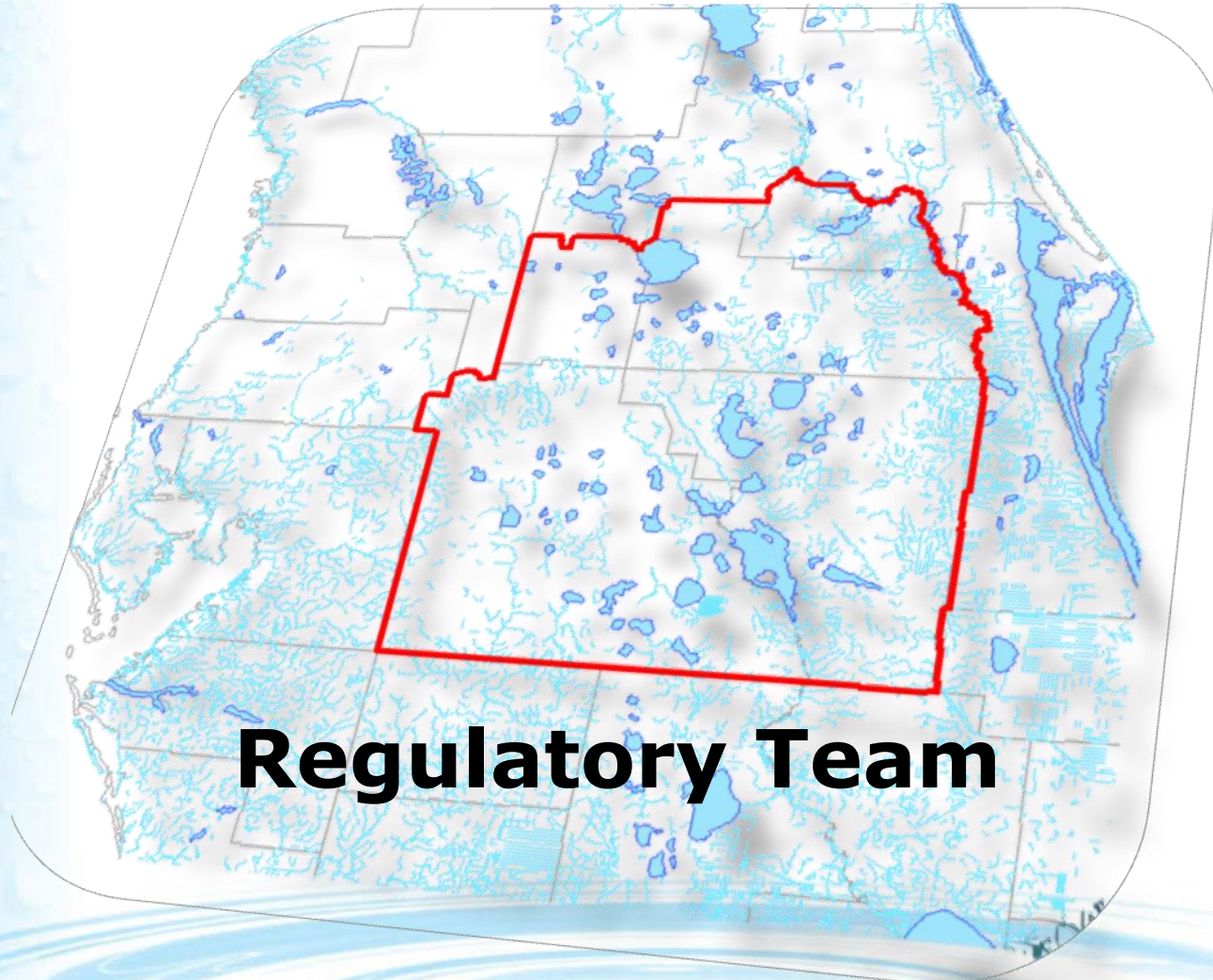


# Central Florida Water Initiative



**Regulatory Team**

CFWI Steering Committee  
October 25, 2013

## CFWI Guiding Principle #3

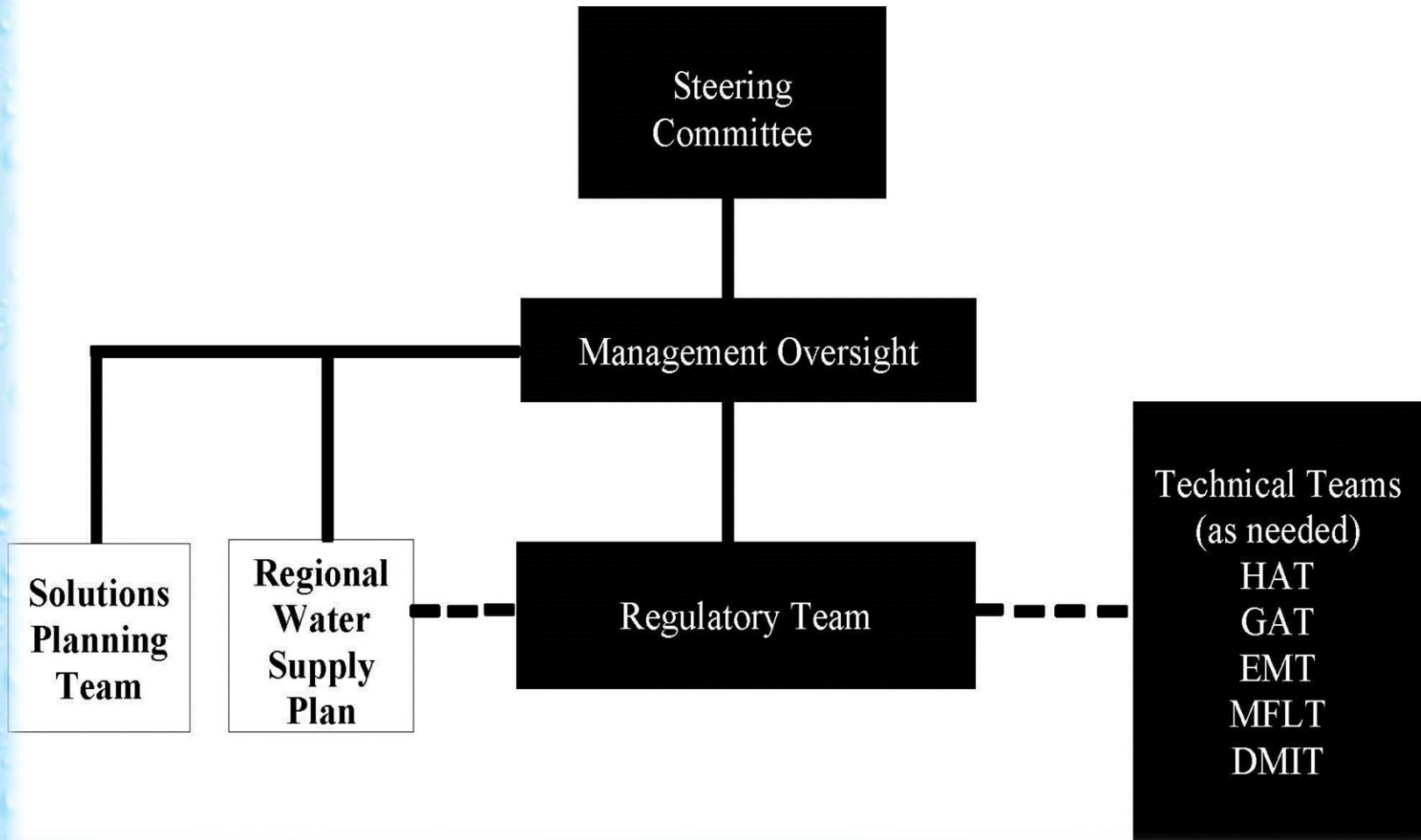
Establish consistent rules and regulations for the three water management districts that meet the Collaborative Process Goals and implement the results of the Central Florida Water Initiative.

# Regulatory Team Membership

## REGULATORY TEAM MEMBERSHIP

<b>Team Leader</b>	Len Lindahl, Assistant Executive Director, SFWMD
<b>Team Members</b>	
<b>Water Management Districts</b>	Mike Register, Division Director, Regulatory Services, SJRWMD Alba Más, Division Director, Regulation, SWFWMD Sharon Trost, Division Director, Regulation, SFWMD
<b>FDEP</b>	Janet Llewellyn, Policy Administrator, Office of Water Policy, DEP
<b>FDACS</b>	Steve Lamb, Federico, Lamb and Associates, Inc.
<b>Environmental</b>	Jane Graham, Esq., Everglades Policy Associate, Audubon Florida
<b>Public Water Supply Utilities</b>	Krystal Azzarella, Polk County Utilities
<b>Legal Counsel</b>	Beth Ross, SFWMD Mary Ellen Winkler, SJRWMD Laura Donaldson, SWFWMD Ed de la Parte, Utilities

# Central Florida Water Initiative



# Concepts

- Manage water resources to achieve sustainability
- Sufficient water be available for:
  - Natural systems
  - Existing and future reasonable-beneficial uses
  - Avoid the adverse effects of competition
- Integrate Water Resource Development and Water Supply Development Projects
- Others

# Regulatory Team and Next Steps

- Steering Committee Meeting:
  - Team Formation - October 25, 2013
- Next Steps:
  - Develop Regulatory Team Scope of Work
  - Prioritize identified work tasks
  - Perform and complete work tasks

# Questions?

