

# **Solutions Planning Team**

***June 28, 2013***

**Robert R. Beltran, P.E., BCEE**

Assistant Executive Director

Southwest Florida Water Management District

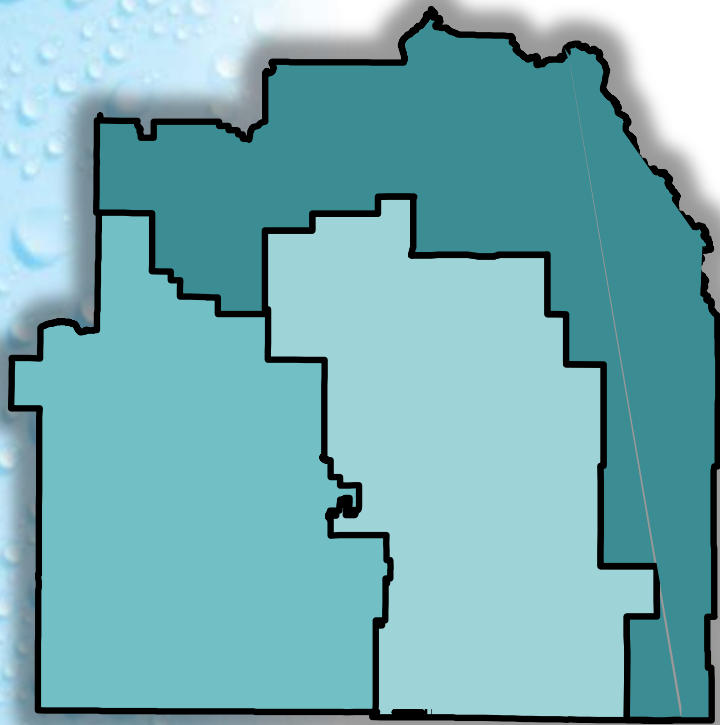
# Guiding Principles

{simplified}

1. Identify **groundwater** resources
2. Develop **strategies** to meet water demands
  - optimizing the use of existing groundwater
  - implementing demand management
  - identifying alternative water supplies
3. Establish **consistent rules**

# Water Demands (mgd)

## 2010 -2035 delta

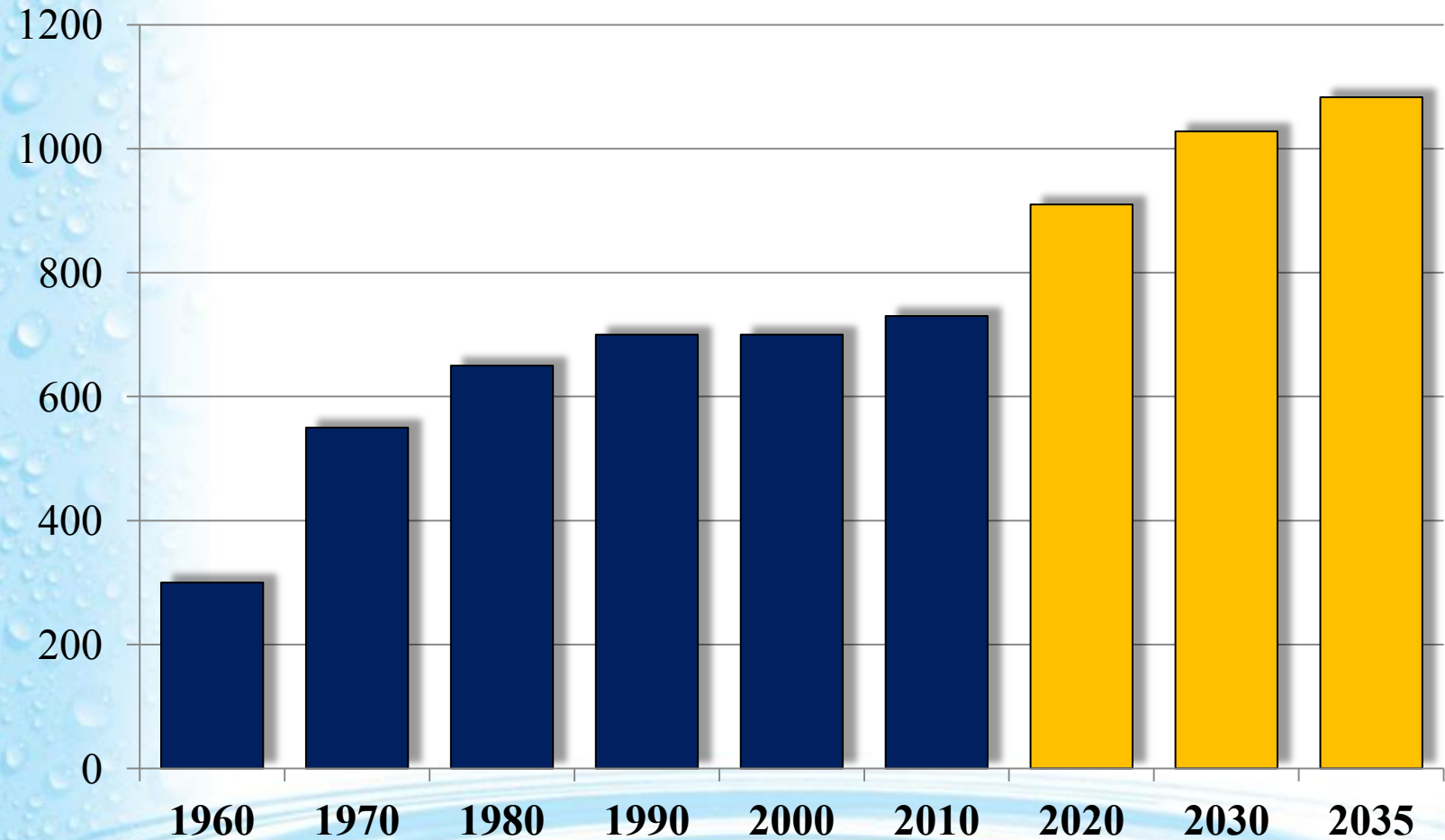


	SJR	SF	SW	Total
PWS	99	86	33	218
Ag	6	25	-1	30
DSS	5	-4	4	5
Rec	10	12	9	31
CII	15	9	-1	23
Power	1	0	5	6
Total	136	128	49	313

# Water Use

All Classes

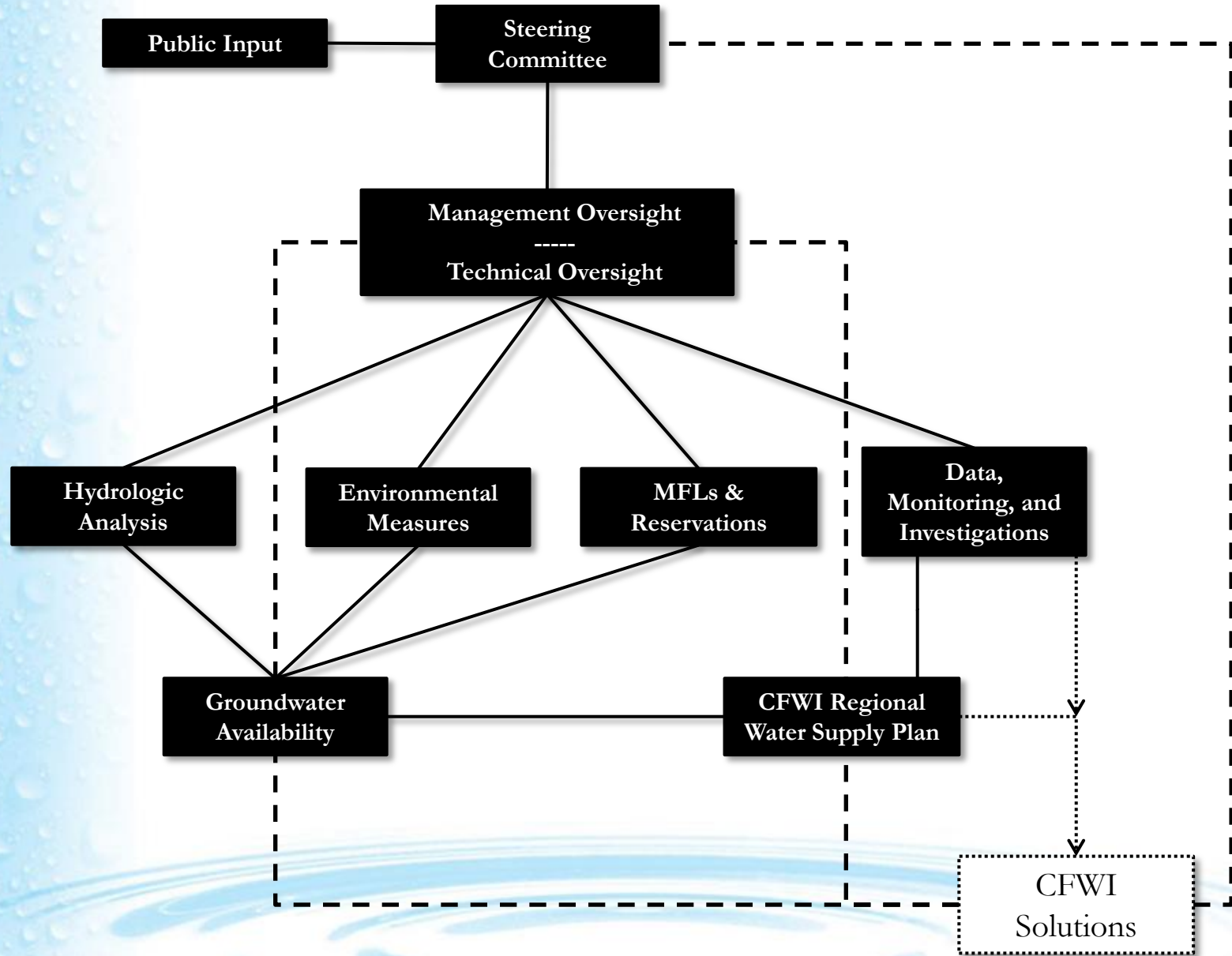
MGD



Historic

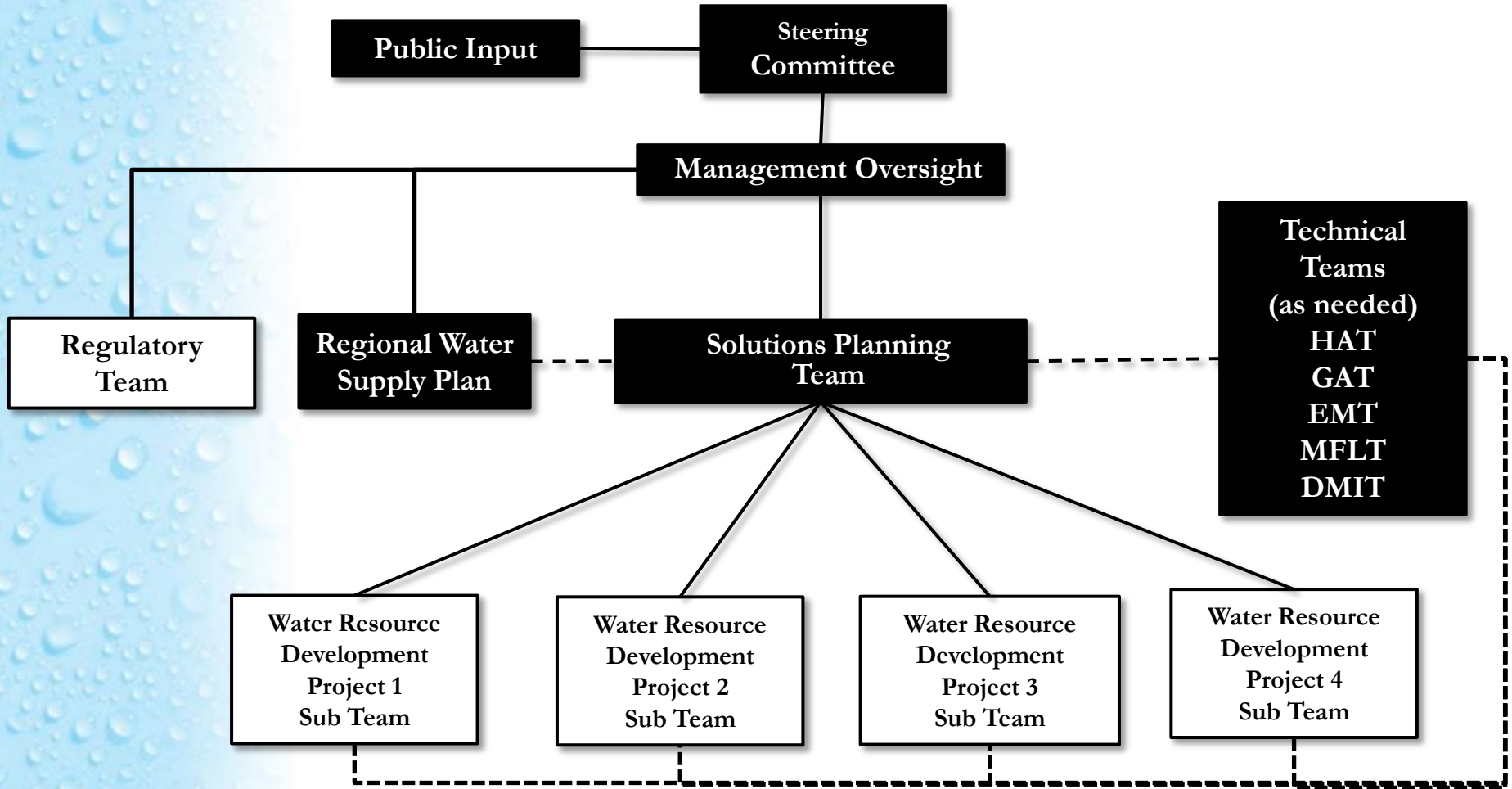
Projected

# Central Florida Water Initiative





# Central Florida Water Initiative



# CFWI Solutions Planning Team

	<b>Member</b>	<b>Alternate</b>
<b>WMD</b>	R. Beltran*	W. Boynton
<b>DEP</b>	T. Beck	J. Llewellyn
<b>Utilities</b>		
<b>Agriculture</b>	J. Fletcher	TBD
<b>Environment</b>	M. Holland	Nancy Prine
<b>CRL</b>	B. Dallari	TBD
<b>At large</b>	M. Minton	TBD

\* Team Leader

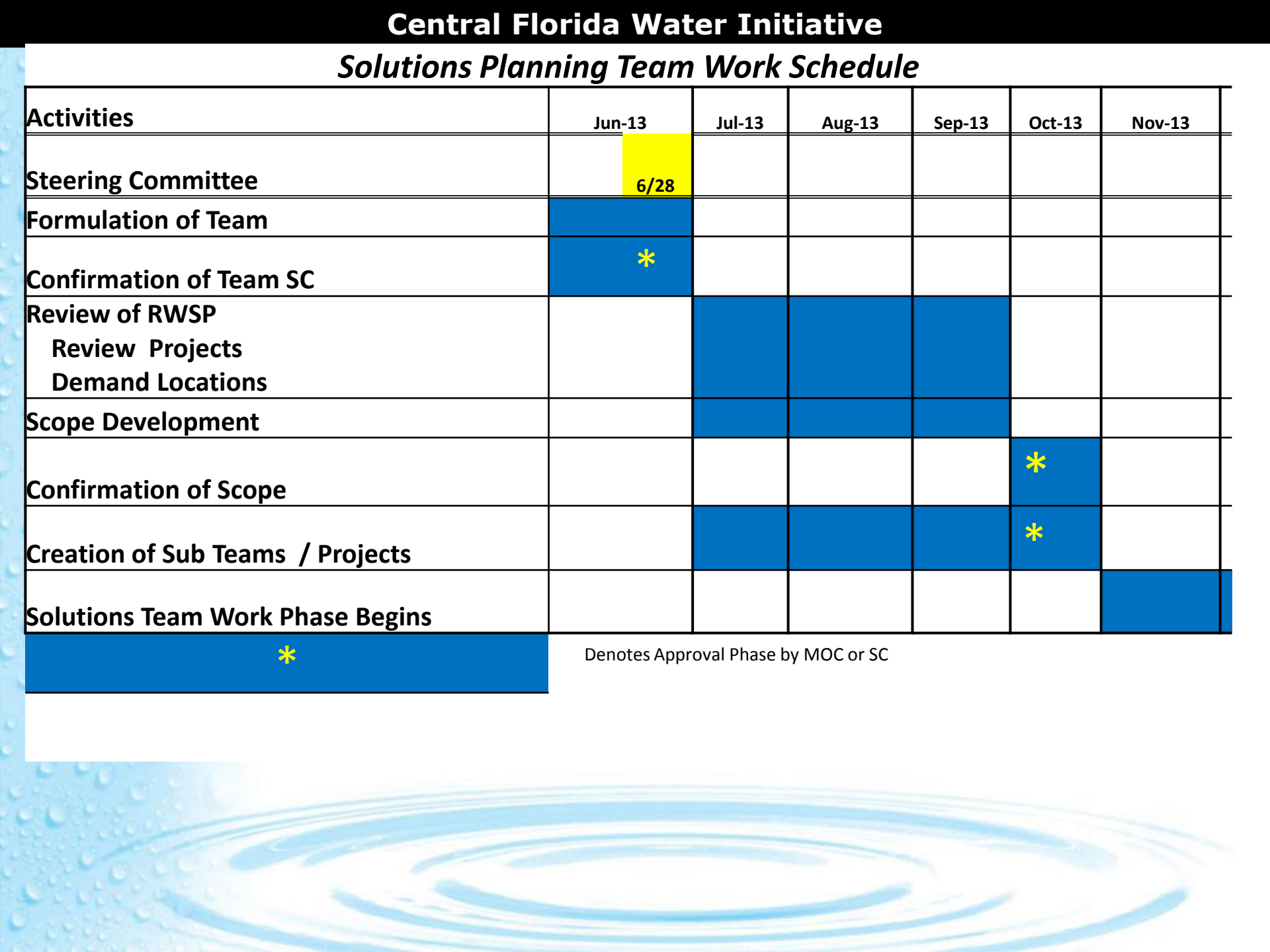
# Central Florida Water Initiative

## Solutions Planning Team Work Schedule

Activities	Jun-13	Jul-13	Aug-13	Sep-13	Oct-13	Nov-13
Steering Committee	6/28					
Formulation of Team						
Confirmation of Team SC	*					
Review of RWSP Review Projects Demand Locations						
Scope Development						
Confirmation of Scope					*	
Creation of Sub Teams / Projects					*	
Solutions Team Work Phase Begins						

\*

Denotes Approval Phase by MOC or SC





## Central Florida Water Initiative

## Questions

[cfwiwater.com](http://cfwiwater.com)

[Home](#)

[Meetings](#)

[Regional Water Supply Plan](#)

[Minimum Flows and Levels and Water Reservations](#)

[Hydrologic Analysis](#)

[Environmental Measures](#)

[Data, Monitoring and Investigations](#)

[Groundwater Availability](#)

[CFWI Resources](#)

[CFCA Resources](#)

[Contacts](#)

By accessing this site, you agree to accept the terms and conditions of the [privacy disclaimer](#).

### Overview of the Central Florida Water Initiative

Florida's water management districts are committed to finding new ways of meeting the demand for freshwater. Historically, the Floridan aquifer system has supplied the vast majority of the water used in the central Florida area. The boundaries of three water management districts — the St. Johns River Water Management District, South Florida Water Management District and Southwest Florida Water Management District — meet in the area. The three districts are studying whether the Floridan aquifer system is reaching its sustainable limits of use and exploring the need to develop supplemental sources of water.



[Click for more detailed map, including public water supply utility service areas](#)

In the past, the three districts worked independently to resolve water resource issues, but the decisions of one district can impact the water resources of another. Today, the districts are working collaboratively with other agencies and stakeholders to implement effective and consistent water resource planning, development and management through the Central Florida Water Initiative (CFWI).

The CFWI builds on the prior work of the Central Florida Coordination Area (CFCA). Both efforts focus on an area that includes southern Lake, Orange, Osceola, Seminole and Polk counties. The three water management districts, along with the Florida Department of Environmental Protection (DEP), Florida Department of Agriculture and Consumer Services (DACS), regional public water supply utilities and other stakeholders are collaborating to develop a unified process to address central Florida's current and long-term water supply needs.

#### Guiding principles

The guiding principles of the CFWI are to:

1. Identify the sustainable quantities of traditional groundwater sources available for water supplies that can be used without causing unacceptable harm to the water resources and associated natural systems.
2. Develop strategies to meet water demands that are in excess of the sustainable yield of existing traditional groundwater sources.
3. Establish consistent rules and regulations for the three water management districts that meet their collective goals, and implement the results of the Central Florida Water Initiative.



The Central Florida Parkway passes central Florida's theme park region and communities.

