

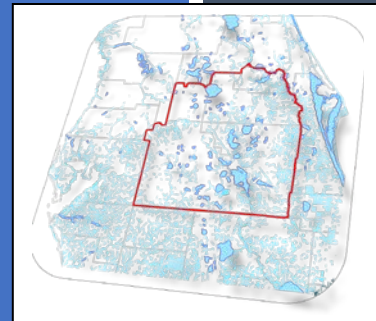


DMIT HYDROGEOLOGIC ANNUAL WORK PLAN (FY2019-FY2025)

*Central Florida
Water Initiative*

This document is the product of the Data, Monitoring, and Investigations Team (DMIT) and represents an update to the DMIT 2018 Annual Work Plan (FY2018-2025) dated April 13, 2018.

January 17, 2019



Executive Summary

Forty wells were planned for construction in FY2018 and 21 wells were completed including five wetland surficial aquifer (SA), eight general SA/intermediate aquifer (IA), six Upper Floridan aquifer (UFA), and two Lower Floridan aquifer (LFA) wells. The remaining wells were not constructed during FY2018 due to difficulties with site access authorization, decisions to delay site development until a later date, or technical drilling challenges. However, development of 46 monitoring sites are currently in progress. Well sites not completed in FY2018 will be incorporated into the FY2019 Work Plan, as appropriate. A total of 35 wells are planned to be constructed during FY2019. This includes 17 wetland SA, six general SA/IA, four UFA, and eight LFA wells. Eight wetland sites were planned for completion in FY2018 and nine were completed. The overall estimated cost for DMIT construction for FY2019 is \$10.90 million dollars.

Contents

Executive Summary.....	i
Contents	iii
Abbreviations and Acronyms.....	iii
1.0 Introduction	1
2.0 Status of DMIT Monitoring Site Construction.....	2
Figure 1: Status of DMIT Sites (November 2018).....	3
Figure 2: DMIT Sites by Monitored Resource (November 2018).....	4
2.1 FY2018 Well Construction.....	5
2.2 FY2019 Well Construction.....	5
2.2.1 Wetland SA Wells.....	5
2.2.2 General SA/IA Wells.....	5
2.2.3 UFA Wells.....	6
2.2.4 LFA Wells.....	6
2.3 FY2018 Wetland Transects.....	6
2.4 FY2019 Wetland Transects.....	7
3.0 FY2019-FY2025 Work Plan Funding	7
Table 1: Implementation Costs by Fiscal Year	7
4.0 DMIT Ongoing Activities.....	8
5.0 Summary and Recommendations.....	8
6.0 Appendices.....	10
Appendix A: DMIT Site Status (October 2018).....	10

Abbreviations and Acronyms

APHPZ – Avon Park high-permeability zone

APPZ – Avon Park permeable zone

CFWI – Central Florida Water Initiative

DMIT – Data, Monitoring, and Investigations Team

FY – Fiscal year (October 1 – September 30, Fiscal years are named based on the year they end)

General SA/IA – surficial and intermediate aquifer wells supporting general monitoring

HAT – Hydrologic Assessment Team

LFA – Lower Floridan aquifer

Minimum Standards Document - Minimum Standards for Water Resource Data Collection, Site Establishment and Field Data Collection Protocols

SC – CFWI Steering Committee

SFWMD – South Florida Water Management District

SWFWMD – Southwest Florida Water Management District

SJRWMD – St. Johns River Water Management District

Summary Report - CFWI Regional Monitoring Program: Summary Report (June 2014)

Wetland SA - Wetland monitoring surficial aquifer wells

WMDs - Water management districts

WRAT – Water Resources Assessment Team

UFA – Upper Floridan aquifer

2015 Work Plan - DMIT Hydrogeologic Work Plan for FY2015 – FY2020 (approved January 30, 2015)

2016 Work Plan - DMIT Hydrogeologic Work Plan Update for FY2016-FY2020 (approved July 22, 2016)

2018 Work Plan - DMIT Hydrogeologic Annual Work Plan (FY2018-FY2025) (approved April 13, 2018)¹

2019 Work Plan - DMIT Hydrogeologic Annual Work Plan (FY2019-FY2025) (approved January 17, 2019)

¹ Following completion of the 2016 Work Plan, the DMIT requested and received approval to amend the deadline for subsequent work plans from July to January. There is no “2017 Work Plan” for this reason.

1.0 Introduction

The Central Florida Water Initiative (CFWI) is a planning-level effort to review existing and projected water use demands in a five-county region of Central Florida and requires coordination between various stakeholders including the South Florida Water Management District (SFWMD), Southwest Florida Water Management District (SWFWMD), St. Johns River Water Management District (SJRWMD), Florida Department of Environmental Protection (FDEP), and the Florida Department of Agriculture and Consumer Services (FDACS). The Data, Monitoring, and Investigations Team (DMIT) is tasked to ensure that available hydrologic, environmental, and other pertinent data collected throughout the region are identified, inventoried, and accessible to support the CFWI technical initiatives and CFWI regulatory activities. DMIT summarized data collection findings and activities within the CFWI region and prepared the *CFWI Regional Monitoring Program: Summary Report (June 2014)* (Summary Report). Following the acceptance of the Summary Report, the CFWI Steering Committee (SC) provided additional guidance to DMIT to develop a work plan detailing an implementation strategy based on the Summary Report findings and minimum data collection standards. The annual workplans are developed based on fiscal years.

The initial work plan, *DMIT Hydrogeologic Work Plan for FY2015–FY2020* (2015 Work Plan), set forth construction and other data collection activities through FY2020. The objective of this plan was to establish a schedule for the construction and testing at existing and new data collection sites identified in the Summary Report. The work plan is updated on an annual basis and provides a tool to convey information to CFWI management and the SC to ensure data collection needs for the CFWI region are being met. Following the initial work plan, an updated work plan was approved in July 2016, entitled *DMIT Hydrogeologic Work Plan Update for FY2016-FY2020* (2016 Work Plan), that describes progress from the previous fiscal year. A subsequent update, entitled *DMIT Hydrogeologic Annual Work Plan (FY2018-FY2025)* (2018 Work Plan), was approved by the SC in April 2018. The SC also approved an extension of the DMIT construction program through FY2025.

In January 2018, the SC directed the DMIT to coordinate with other Water Resources Assessment Team (WRAT) sub-teams to ensure that DMIT activities will meet their data needs. Based on this direction, DMIT has scheduled regular coordination meetings with the sub-teams and has participated in WRAT sub-team meetings. In addition, the DMIT has copied the WRAT sub-team leads on work products as appropriate.

This document, the *DMIT Hydrogeologic Annual Work Plan (FY2019-FY2025)* (2019 Work Plan), is the third update to the 2015 Work Plan and describes the progress since implementation of the 2018 Work Plan, as well as the proposed schedule for future work through FY2025. The status of items included in the Ongoing DMIT Activities section of the previous work plans are also updated in this report. Where necessary, any changes to monitoring site locations or frequencies are included. This report supersedes the previously published work plans and

serves as the working document for future activities. All documents and methodologies can be found at the CFWI website (www.cfwiwater.com).

2.0 Status of DMIT Monitoring Site Construction

Wells constructed pursuant to the DMIT work plan (see Appendix A) are for monitoring and not for water supply production. The location and status of all existing and proposed DMIT monitoring sites developed pursuant to the DMIT work plans are shown in **Figure 1**. The water resources monitored at the sites are indicated in **Figure 2**. Information about the status of each site is provided in **Appendix A**. Sites planned but not mapped are sites whose exact locations are yet to be determined.

Figure 1: Status of DMIT Sites (November 2018)

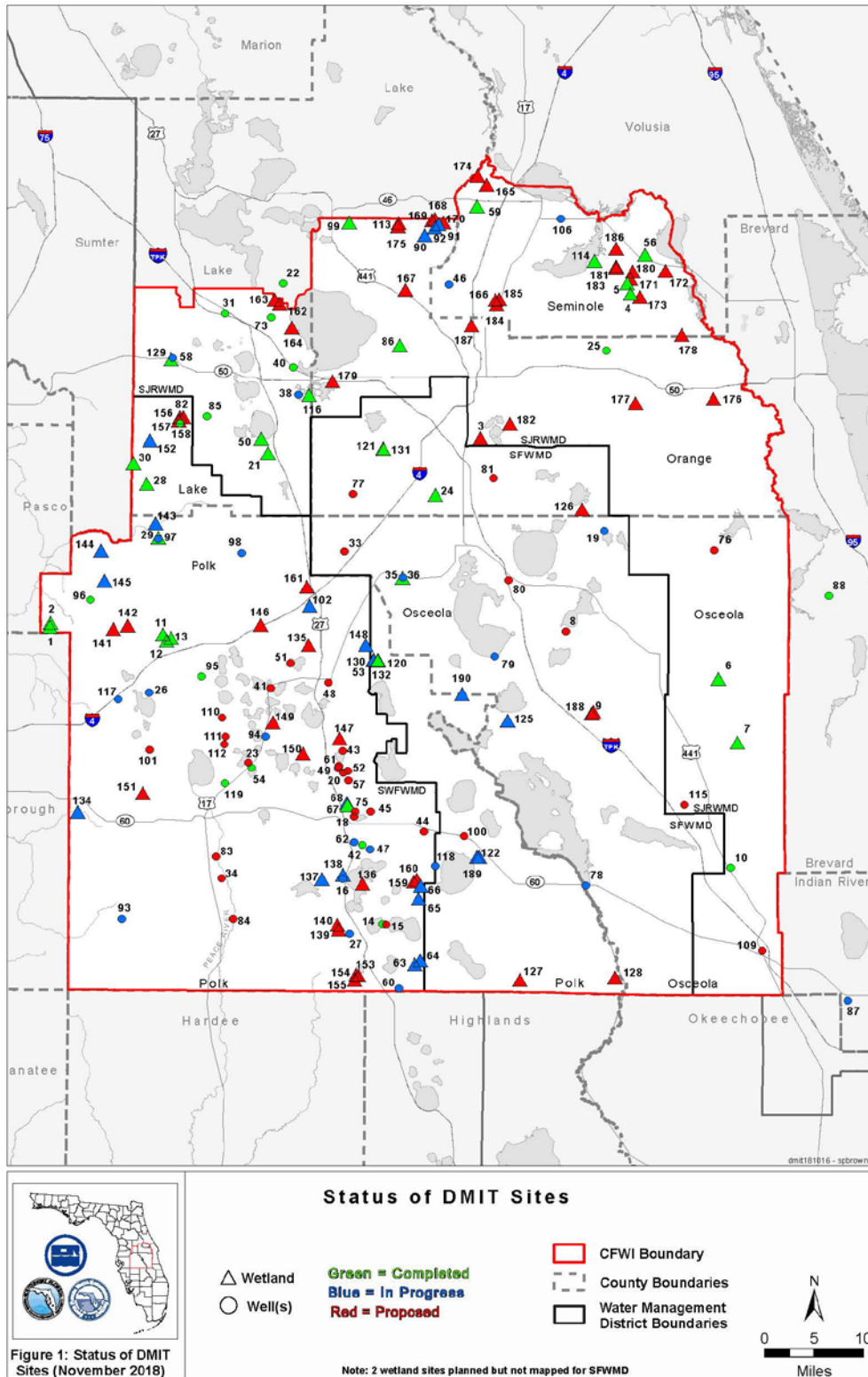


Figure 2: DMIT Sites by Monitored Resource (November 2018)

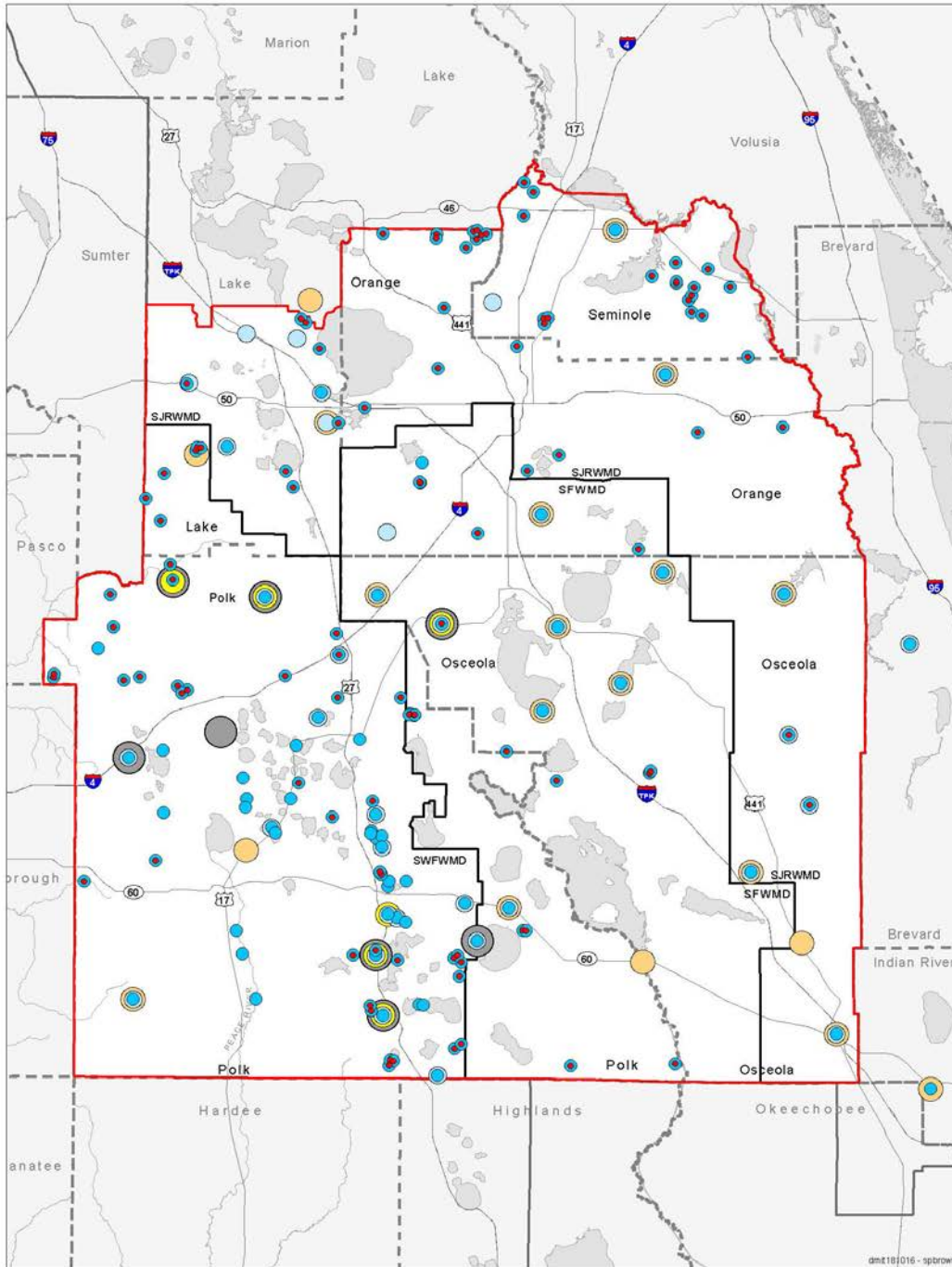


Figure 2: DMIT Sites by Monitored Resource (November 2018)

DMIT Sites By Monitored Resource

- Wetlands
- Surficial Aquifer
- Upper Floridan Aquifer
- Lower Floridan Aquifer
- Lower Floridan Aquifer I
- Lower Floridan Aquifer II

- CFWI Boundary
- County Boundaries
- Water Management District Boundaries

Note: 2 wetland sites planned but not mapped for SFWMD

Miles

2.1 FY2018 Well Construction

The Summary Report identified regional water resource monitoring data gaps in the CFWI area. The wells constructed pursuant to the work plans are designed to fill these data gaps. Forty wells were planned for construction throughout the CFWI area in FY2018 and 21 wells were completed including five wetland surficial aquifer (SA), eight general SA/intermediate aquifer (IA), six Upper Floridan aquifer (UFA), and two Lower Floridan aquifer (LFA) wells. The remaining wells were not constructed during FY2018 due to difficulties with site access authorization, decisions to delay site development until a later date, or technical drilling challenges. Well sites not completed in FY2018 will be incorporated into the FY2019 Work Plan, as appropriate. Following construction, all monitor wells were instrumented for water level monitoring and, where applicable, incorporated into water quality monitoring. The status of well completion progress can be found in **Figure 1** and **Appendix A**.

2.2 FY2019 Well Construction

This section identifies wells to be completed in FY2019 and those wells planned for FY2020 through FY2025 per well type in the following sections and shown on **Figures 1 and 2**. A detailed list of wells, planned dates for completion, and other information can be found in **Appendix A**. Two placeholders have been included in the table for wetland sites not yet identified. Sites requiring exploratory coring prior to well construction are listed in multiple years. Following construction, all well sites will be instrumented for long-term water level measurement and, where applicable, incorporated into existing water quality monitoring plans.

2.2.1 Wetland SA Wells

Construction of wetland SA wells is ongoing. Prior to construction, wetland sites are evaluated by wetland specialists from each WMD to ascertain if they meet the requirements of the Summary Report and the Minimum Standards Document, including whether an existing SA monitoring well can be used in lieu of constructing a new well to support the wetland monitoring effort. Vegetative assessments and transects are completed for each of the wetland sites consistent with the data collection requirements of the Minimum Standards Document. Construction of 17 wetland SA wells are planned for FY2019, and 53 wells are planned for FY2020 through FY2025.

2.2.2 General SA/IA Wells

Construction of general SA/IA wells is ongoing to compliment monitoring of the Floridan Aquifer System. Wells included in this section do not include wetland wells.

Construction of six general SA/IA wells are planned in FY2019, and 31 wells are planned for FY2020 through FY2025.

2.2.3 UFA Wells

Construction of UFA wells is ongoing to support regional groundwater resource monitoring efforts. Generally, these sites are located near minimum flows and levels lakes. Currently, construction of four UFA wells are planned in FY2019, and 23 wells are planned for FY2020 through FY2025.

2.2.4 LFA Wells

Construction of LFA wells is ongoing to support regional water resource monitoring efforts. Construction of eight LFA wells are planned for FY2019, and 20 wells are planned for FY2020 through FY2025.

2.3 FY2018 Wetland Transects

Staff completed 9 wetland sites (one more than the targeted 8 wetland monitoring sites) in FY2018. Work completed includes construction of SA monitoring wells (where needed), establishing transects, and conducting the vegetative assessment work. A total of 30 wetland monitoring sites have been completed since implementation of DMIT with a total of 16 SA monitoring wells constructed to support wetland monitoring efforts. The remaining 14 completed wetland monitoring sites utilized existing SA monitoring wells that met the minimum standards for the wetland monitoring program.

In the Summary Report, DMIT presented recommendations for a minimum and optimum amount of monitoring for each of the aquifer systems and for wetlands. The SC's guidance on plan implementation included identifying priority site locations for the DMIT minimum option. For wetland locations, this is defined as one monitoring location per wetland type per physiographic region. DMIT's approach to developing a minimum recommendation was to start with the monitoring sites that meet a specific, urgent need and fit within DMIT recommendations for regional monitoring improvement and efficiency. For the Wetland Minimum, DMIT recommended that a minimum number of wetland monitoring sites should be set so that there is at least one monitoring site per hydroclass of wetland within each of the identified physiographic regions. This would result in the addition of 107 wetland monitoring sites to meet a minimum of wetland sites that are monitored.

Based on the Summary Report, DMIT produced the 2015 Work Plan which fulfills directives set forth by the SC. The 2015 Work Plan was approved by the SC in January 2015 and DMIT moved forward with implementing the minimum option directives.

Since approval of the first work plan, DMIT has identified that the minimum method of establishing one wetland monitoring site in each hydroclass wetland type per physiographic region cannot be implemented as recommended in the DMIT 2014 Summary Report and as subsequently approved by the Steering Committee. There are practical, logistical and safety reasons that cause the approved minimum method to not be feasible. The DMIT sub-team has identified the need to modify wetland site location selection criteria due to this infeasibility.

DMIT coordinated with stakeholders including the WRAT sub-teams, WRAT and MOC and obtained comments regarding the proposed site selection. Based on comments received, DMIT modified the approach for locating wetland monitoring sites that meets the data needs for the CFWI teams. DMIT is proposing to still establish a total of 107 wetland monitoring sites, but distribute sites to provide long-term protection while taking into consideration geographical representation of hydrologically sensitive hydroclass wetland types that occur in large physiographic regions (e.g., Lake Upland, Lake Wales Ridge, Osceola Plain, etc.), and on sites that may have a higher ecological value than other potential sites selected under the current site select methodology.

This modification will result in multiple monitoring sites being located in the same wetland type in some physiographic region while other wetland types will not be monitored at all. Finally, this modification will result in cost savings in implementation. Based on the comments received from the coordination meetings, this approach meets the data needs of the WRAT sub-teams.

2.4 FY2019 Wetland Transects

Staff is working towards completion of the wetland monitoring program as identified in the 2014 Summary Report. A total of 77 wetland sites remain to be established during FY2019-FY2025 to meet the monitoring goals established in the 2014 Summary Report. Twenty wetland monitoring sites are scheduled for completion in FY2019. The remaining 57 wetland sites will be completed during FY2020-FY2025.

3.0 FY2019-FY2025 Work Plan Funding

Funding for planned sites is dependent on approvals and priorities for each WMD and varies each fiscal year. A breakdown of the current and estimated funding to complete the planned well construction is included in **Table 1** below. Total implementation costs are a combination of construction, real estate, and consulting costs. WMD staff salaries are not included in the costs. The budget for FY2019 is based on estimated costs, however, actual construction costs may be lower. Costs for FY2020-FY2025 are estimated for the six-year period and are subject to availability of Legislative appropriation or State funding.

Table 1: Implementation Costs by Fiscal Year

Fiscal Year	Total Implementation Costs (in millions)
2015	\$0.63
2016	\$0.70
2017	\$3.05
2018	\$3.53
2019 ¹	\$10.90 ¹
2020-2025 ²	\$20.45 ²
Total	\$39.26

¹Budgeted amount. Actual cost for construction may be lower

²Cost is estimated for the six-year period. Project implementation and timeline is subject to availability of Legislative appropriation or State funding.

4.0 DMIT Ongoing Activities

Activity	Status
Identify and acquire legal access to future monitoring locations.	This task is ongoing. Improvements have been made in the efficiency and process of obtaining access, particularly with state lands.
Coordinated with CFWI teams and sub-teams and developed modified approach for wetland site location selection.	Complete.
Develop and update a uniform electronic database for storing field reports and digital media associated with each wetland site.	The creation of an electronic database and incorporating data into the forms for uploading for all WMDs is nearing completion. A template for the data collection forms was completed in December 2017. Development of a common database between the WMDs that will be available on the CFWI website is approximately 80 percent complete and will be completed by December 2019.
Update the annual work plan to report progress of ongoing activities, changes in construction activities and costs to the MOC and SC.	The work plan is updated annually and includes changes in construction activities and costs. The next update will be completed in December 2019.
Update and expand the number of sources in the current CFWI Inventory.	Inventory is updated annually. The next update will be completed by the end of 2019.
Provide other support services to the CFWI effort as requested.	DMIT continues to provide support to other entities as needed.

5.0 Summary and Recommendations

Forty wells were planned for construction in FY2018 and 21 wells were completed including five wetland surficial aquifer (SA), eight general SA/intermediate aquifer (IA), six Upper Floridan aquifer (UFA), and two Lower Floridan aquifer (LFA) wells. The remaining wells were not constructed during FY2018 due to difficulties with site access authorization, decisions to delay

site development until a later date, or insurmountable technical drilling challenges. However, development of 46 sites are currently in progress. Eight wetland sites were planned for completion in FY2018 and nine wetland sites were completed. Wells sites not completed in FY2018 will be incorporated into the FY2019 Work Plan as appropriate. Thirty-five wells are planned to be constructed during FY2019. This includes 17 wetland SA, six general SA/IA, four UFA, and eight LFA wells. Twenty wetland sites are planned for completion during FY2019. The estimated cost for DMIT construction for FY2019 is \$10.90 million dollars. Wells constructed pursuant to the DMIT work plan (see Appendix A) are for monitoring and not for water supply production.

DMIT updated the CFWI well inventory for all WMD, state agency, county, city, and permittee wells within the CFWI area. ArcGIS Online map viewers were created to provide easy access to the inventory. Site acquisition continued throughout FY2018. Development of a new wetlands electronic database is ongoing, and completion is anticipated by the end of 2019. An Excel form was completed and the WMDs will be uploading wetland data following the new process. Once completed, the database will be available on the CFWI website.

6.0 Appendices

Appendix A: DMIT Site Status (October 2018)

[Green - Complete, Blue - In Progress, Red - Proposed, Brown - Deleted]

ID	Site Name	WMD	Site Type	Estimated Construction FY	Number New Well(s)	Well Type(s)	Status/Completion FY
1	Alston Bay	SWF	Wetlands	2016	0		Complete/2016
2	Alston New Cypress	SWF	Wetlands	2017	1	1 Wetland SA	Complete/2017
3	Bay Lake-Walker Middle School (SJ-KH1)	SJR	Wetlands	2023	1	1 wetland SA	Proposed
4	Econ SF South	SJR	Wetlands	2017	1	1 wetland SA	Complete/2017
5	Econ SF North	SJR	Wetlands	2017	1	1 wetland SA	Complete/2017
6	Bull Creek WMA North	SJR	Wetlands /WL/WQ	2016	3	Core, 1 wetland SA, 1 general SA/IA, 1 UFA/APPZ	Complete/2016
7	Bull Creek WMA South	SJR	Wetlands /WL/WQ	2016	3	1 wetland SA, 1 general SA/IA, 1 UFA/APPZ	Complete/2016
8	C-33	SF	WL/WQ	2021-2022	4	1 SA, 2 UFA, 1 LFA	Proposed
9	Camp Lonesome 1	SF	Wetlands	2019	1	1 SA	Proposed
10	Campbell Rch	SJR	WL/WQ	2017	1	Core, 1 LFA	Complete/2017
11	City of Lakeland Wellfield G	SWF	Wetlands	2016	0		Complete/2016
12	City of Lakeland Wellfield J	SWF	Wetlands	2016	0		Complete/2016
13	City of Lakeland Wellfield K	SWF	Wetlands	2016	0		Complete/2016
14	Clinch Lake	SWF	WL	2018	1	1 General SA	Complete/2018
15	Coley Deep	SWF	WL	2022	1	1 General SA	Proposed
16	Crooked Lake	SWF	WL/WQ	2017	5	1 General SA, 1 UFA, 1 LFA I, 2 LFA II	In Progress
17	Crooked Lake (Orange Co)	SJR	Wetlands	2017	0	N/A	Deleted
18	Crystal Lake	SWF	WL and Wetlands	2019	1	1 General SA	Complete/2019

ID	Site Name	WMD	Site Type	Estimated Construction FY	Number New Well(s)	Well Type(s)	Status/Completion FY
19	Deseret Ranch/Lk Myrtle	SF	WL/WQ	2018	3	1 UFA; 1 LFA, 1 SA	Complete/2018
21	Lake Louisa State Park - Dixie Lk Wetland	SJR	Wetlands	2017	1	1 wetland SA	Complete/2017
22	Duda-Whittle Wells	SJR	WL/WQ	2015	1	Core, 1 LFA	Complete/2016
23	Eagle Lake	SWF	WL	2020	2	1 General SA, 1 UFA	Proposed
24	East Pine Island - Shingle Creek Basin	SF	Wetlands	2018	1	1 SA wetlands	Complete/2018
24	Dinner Lake	SWF	WL	2019	1	1 General SA	In Progress
25	Econ Sandhills Rt420	SJR	WL/WQ	2015	5	2 general SA/IA, 2 UFA/APPZ, 1 LFA, Core	Complete/2017
26	Fish Lake Deep NR Lakeland	SWF	WL	2018	1	1 General SA	Complete/2018
27	Frostproof	SWF	WL/WQ	2018	4	1 General SA, 1 UFA, 1 LFA I, 1 LFA II	In Progress
28	Green Swamp 4	SWF	Wetlands	2016	0		Complete/2016
29	Green Swamp 7	SWF	Wetlands	2016	1	1 Wetland SA	Complete/2016
30	Green Swamp Bay	SWF	Wetlands	2016	0		Complete/2016
31	Groveland Sunshine Water Plant	SJR	WL/WQ	2015	1	1 UFA/APPZ, Core	Complete/2015
32	Hal Scott Preserve - floodplain	SJR	Wetlands	-	4	1 wetland SA	Deleted
33	HH-2-IC	SF	WL/WQ	2020-2021	5	1 SA, 2 UFA, 2 LFA	Proposed
34	Homeland DEP 9	SWF	WL	2024	1	1 General SA	Proposed
35	Intercession City	SF	Wetlands	2018	0	0	Complete/2018
36	Intercession City - UFA monitoring start	SF	WL/WQ	2019	1	1 UFA to be instrumented	In Progress
37	Island Lake	SJR	Wetlands	2017	0	N/A	Deleted
38	Scrub Point South	SJR	WL/WQ	2017	2	1 UFA/APPZ, 1 LFA	In Progress

ID	Site Name	WMD	Site Type	Estimated Construction FY	Number New Well(s)	Well Type(s)	Status/Completion FY
39	Keene's Pt Park	SF	Wetlands	2020	1	1 SA	Deleted
40	Turnpike	SJR	WLWQ	2017	2	1 general SA/IA, 1 UFA/APPZ	Complete/2017
41	Lake Alfred Deep at Lake Alfred	SWF	WL	2022	1	1 General SA	Proposed
42	Lake Amoret	SWF	WL	2017	2	1 General SA, 1 UFA	Complete/2017
43	Lake Annie	SWF	WL	2022	2	1 General SA, 1 UFA	Proposed
44	Lake Aurora	SWF	WL	2021	2	1 General SA, 1 UFA	Proposed
45	Lake Bonnie	SWF	WL	2025	1	1 General SA	Proposed
46	Lake Brantley	SJR	MFL	2019	1	1 UFA/APPZ	In Progress
47	Lake Easy	SWF	WL	2018	1	1 General SA	In Progress
48	Lake Eva	SWF	WL	2021	2	1 General SA, 1 UFA	Proposed
49	Lake Lee	SWF	WL	2025	1	1 General SA	Proposed
50	Lake Louisa State Park - Isolated Wetland	SJR	Wetlands	2017	1	1 wetland SA	Complete/2017
51	Lake Lowery	SWF	WL	2024	2	1 General SA, 1 UFA	Proposed
52	Lake Mabel	SWF	WL	2023	1	1 General SA	Proposed
53	Lake Marion Creek - East	SF	Wetlands	2018	1	1 SA wetlands	In Progress
54	Lake McLeod	SWF	WL	2018	1	1 General SA	Complete/2018
55	Wekiva Springs State Park—Lake Prevatt	SJR	Wetlands	-	0	-	Deleted
56	Lk Proctor	SJR	Wetlands	2016	1	1 wetland SA	Complete/2016
57	Lake Starr	SWF	WL	2020	2	1 General SA, 1 UFA	Proposed
58	Lake Sunset	SJR	WLWQ	2020	1	1 UFA/APPZ	In Progress

ID	Site Name	WMD	Site Type	Estimated Construction FY	Number New Well(s)	Well Type(s)	Status/Completion FY
59	Sylvan Lk Wells	SJR	Wetlands /MFL	2016	0		Complete/2016
60	Lake Trout	SWF	WL	2018	2	1 General SA, 1 UFA	Complete/2018
61	Lake Venus	SWF	WL	2019	1	1 General SA	In Progress
62	Lake Wales (formerly Waverly)	SWF	WLWQ	2019	4	1 General SA, 1 UFA, 1 LFA I, 1 LFA II	In Progress
63	Lake Wales Ridge State Forest Arbuckle 1	SWF	Wetlands	2022	1	1 Wetland SA	In Progress
64	Lake Wales Ridge State Forest Arbuckle 2	SWF	Wetlands	2022	1	1 Wetland SA	In Progress
65	Lake Wales Ridge State Forest Walk in the Water 1	SWF	Wetlands	2022	1	1 Wetland SA	In Progress
66	Lake Wales Ridge State Forest Walk in the Water 2	SWF	Wetlands	2022	1	1 Wetland SA	In Progress
67	Lake Wales Ridge Wildlife and Environmental Area Mountain Lake Cutoff 1	SWF	Wetlands	2017	0		Complete/2017
68	Lake Wales Ridge Wildlife and Environmental Area Mountain Lake Cutoff 2	SWF	Wetlands	2020	1	1 Wetland SA	In Progress
69	Lake Wales Ridge Wildlife and Environmental Area Mountain Lake Cutoff 3	SWF	Wetlands	2017	0	1 SA	Deleted
70	Lake Wales Ridge Wildlife and Environmental Area Mountain Lake Cutoff 4	SWF	Wetlands	2017	0	1 SA	Deleted
71	Long Branch	SJR	Wetlands	2020	4	4 wetland SA	Deleted
72	LW4P	SWF	WL	2018-2020	-	1 SA	Deleted
73	Minneola	SJR	WLWQ	2016	1	1 UFA/APPZ	Complete/2016
74	North Hilochee WMA (fka North Boggy Marsh)	SJR	Wetlands /MFL	-	4	4 wetland SA	Proposed
75	North Lake Wales	SWF	WL	2020	1	1 General SA	Proposed

ID	Site Name	WMD	Site Type	Estimated Construction FY	Number New Well(s)	Well Type(s)	Status/Completion FY
76	North Osceola	SJR	WL/WQ	2024	4	Core / 2 general SA/IA, 1 UFA/APPZ, 1 LFA	Proposed
77	ORF-60	SF	WL/WQ	2023	2	1 UFA, 1 APPZ	Proposed
78	OSF-52	SF	WL/WQ	2019-2022	2	2 LFA	In Progress
79	OSF-53 - rehabilitation	SF	WL/WQ	2018-2020	3	1 APPZ; 1 UFA; LFA core-hole and testing; 1 LFA-upper	In Progress
80	OSF-70 - St Cloud	SF	WL/WQ	2024	0	Existing SA, UFA, APPZ, LFA	Proposed
81	OUC - Air 19	SF	WL/WQ	2019	1	1 UFA	Proposed
82	Pasture Reserve	SJR	WL/WQ	2015	1	1 LFA	Complete/2015
83	Peace River at Bartow	SWF	WL	2024	1	1 General SA	Proposed
84	Peace River at Fort Meade	SWF	WL	2024	1	1 General SA	Proposed
85	Pine Island Well	SJR	WL/WQ	2017	2	1 general SA/IA, 1 UFA/APPZ	Complete/2017
86	Prairie Lake	SJR	Wetlands	2017	0		Complete/2017
87	Prince Parcel Wells	SJR	WL/WQ	2025	4	1 general SA/IA, 1 UFA, 1 APPZ constructed; 1 LFA planned FY2025	In Progress
88	River Lakes Cnsrv A.	SJR	WL/WQ	2016	3	2 general SA/IA, 1 UFA/APPZ	Complete/2016
89	Rock Springs Run Park	SJR	Wetlands	-	4	1 wetland SA	Deleted
90	Rock Springs Run State Reserve (SJ-FB4)-forested strand	SJR	Wetlands	2019	1	1 wetland SA	Proposed
91	Rock Springs Run State Reserve Site #1- isolated forest	SJR	Wetlands	2019	0		Proposed
92	Rock Springs Run State Reserve Site #2 - isolated marsh	SJR	Wetlands	2019	1	1 wetland SA	Proposed

ID	Site Name	WMD	Site Type	Estimated Construction FY	Number New Well(s)	Well Type(s)	Status/Completion FY
93	ROMP 46 - Baird	SWF	WL/WQ	2021	4	1 General SA, 2 UFA, 1 LFA, Coring/ Testing	In Progress
94	ROMP 73 - Winterhaven	SWF	WL	2021	1	1 General SA	In Progress
95	ROMP 75 - Auburndale	SWF	WL/WQ	2016	1	1 LFA II	Complete/2016
96	ROMP 87 - Green Swamp	SWF	WL	2017	1	1 General SA	Complete/2017
97	ROMP 88 - Rock Ridge (Green Swamp West)	SWF	WL/WQ	2017	2	1 LFA I, 1 LFA II, Coring/ Testing	In Progress
98	ROMP 88.5 - Northeast Polk (formerly Green Swamp East)	SWF	WL/WQ	2018	4	1 General SA, 1 UFA, 1 LFA I, 1 LFA II, Coring/Testing	In Progress
99	Round Lake	SJR	Wetlands	2017	0		Complete/2017
100	Walk in Water (formerly S.R. 60 near Lake Weo & Rosilie)	SF	WL/WQ	2019-2020	4	1 SA, 1 UFA, 1 APPZ, 1 LFA	In Progress
101	Sanlon Ranch	SWF	WL	2024	1	1 General SA	Proposed
102	Thornhill Ranch Replacement	SWF	WL and Wetlands	2018	2	1 General SA, 1 UFA	In Progress
103	Tosohatchee WMA - isolated marsh	SJR	Wetlands	2019	0	4 SA	Deleted
104	Tosohatchee WMA - large isolated forested wetland	SJR	Wetlands	-	4	4 wetland SA	Deleted
105	Wekiva Springs State Park - Wekiva River Swamp	SJR	Wetlands	-	4	4 wetland SA	Deleted
106	Lk Jesup E AP Blvd	SJR	WL/WQ	2017	3	Core / 1 general SA/IA, 1 UFA/APPZ constructed, 1 LFA planned FY23	In Progress
107	Far Reach Ranch CA	SJR	WL/WQ	2020	3	Core / 2 general SA/IA, 1 UFA/APPZ	Deleted
108	World Gateway	SF	Wetlands	2016	0	4 SA	Deleted
109	Yeehaw Junction Wetland Well	SJR	WL/WQ	2022	4	Core / 2 general SA/IA, 1 UFA/APPZ, 1 LFA	Proposed
110	REG	SWF	WL	2023	1	1 General SA	Proposed

ID	Site Name	WMD	Site Type	Estimated Construction FY	Number New Well(s)	Well Type(s)	Status/Completion FY
111	Wetland Well REG	SWF	WL	2023	1	1 General SA	Proposed
112	Wetland Well REG	SWF	WL	2023	1	1 General SA	Proposed
113	Rock Springs Run State Reserve - Lake Bartho	SJR	Wetlands	2020	1	1 wetland SA	Proposed
114	Lk Jesup CA Wetland1	SJR	Wetlands	2017	1	1 wetland SA	Complete/2017
115	Three Lakes WMA	SJR	WLWQ	2021	4	Core / 2 general SA/IA, 1 UFA/APPZ, 1 LFA	In Progress
116	Scrub Point North	SJR	Wetlands	2017	1	1 wetland SA	Complete/2017
117	West Polk	SWF	WLWQ	2018	4	1 General SA, 1 UFA, 1 LFA I, 1 LFA II	In Progress
118	SE Wellfield	SWF	WLWQ	2018	3	1 General SA, 1 UFA, 1 LFA II	In Progress
119	CRWPF (Bartow)	SWF	WLWQ	2017	1	Core, 1 LFA	Complete/2017
120	Snell Creek - East	SF	Wetlands	2018	1	1 SA wetlands	Complete/2018
121	Tibet Butler 1	SF	Wetlands	2018	0	0	Complete/2018
122	Walk in the Water 1	SF	Wetlands	2019	1	1 SA wetlands	In Progress
123	London-Creek	SF	Wetlands	2019	4	4 SA wetlands	Deleted
124	Hatchineha	SF	Wetlands	2019	4	4 SA wetlands	Deleted
125	Gardner Cobb	SF	Wetlands	2019	1	1 SA wetlands	In Progress
126	Moss Park/Split Oak	SF	Wetlands	2020	1	1 SA wetlands	Proposed
127	Bombing Range	SF	Wetlands	2020	1	1 SA wetlands	Proposed
128	Okeechobee Plain	SF	Wetlands	2020	1	1 SA wetlands	Proposed
129	Lake Sunset-wetland	SJR	Wetlands	2016	0		Completed/2016
130	Lake Marion Creek - West	SF	Wetlands	2018	1	1 SA wetlands	In Progress

ID	Site Name	WMD	Site Type	Estimated Construction FY	Number New Well(s)	Well Type(s)	Status/Completion FY
131	Tibet Butler 2	SF	Wetlands	2018	0	0	Complete/2018
132	Snell Creek - West	SF	Wetlands	2018	1	1 SA wetlands	Complete/2018
133	Hal Scott Preserve - Isolated Forested	SJR	Wetlands	-	4	4 SA wetlands	Deleted
134	Alafia River Reserve	SWF	Wetlands	2023	1	1 Wetland SA	In Progress
135	Bonnet Lake Marsh	SWF	Wetlands	2023	1	1 Wetland SA	Proposed
136	Crooked Lake Prairie	SWF	Wetlands	2020	1	1 Wetland SA	Proposed
137	Crooked Lake West 1	SWF	Wetlands	2020	1	1 Wetland SA	In Progress
138	Crooked Lake West 2	SWF	Wetlands	2020	1	1 Wetland SA	In Progress
139	Crooked Lake Wildlife and Environmental Area 1	SWF	Wetlands	2022	1	1 Wetland SA	Proposed
140	Crooked Lake Wildlife and Environmental Area 2	SWF	Wetlands	2022	1	1 Wetland SA	Proposed
141	Gator Creek Reserve 1	SWF	Wetlands	2019	1	1 Wetland SA	Proposed
142	Gator Creek Reserve 2	SWF	Wetlands	2019	1	1 Wetland SA	Proposed
143	Green Swamp Upper Withlacoochee	SWF	Wetlands	2019	1	1 Wetland SA	In Progress
144	Hampton Colt Creek	SWF	Wetlands	2019	1	1 Wetland SA	In Progress
145	Hampton Gator Creek	SWF	Wetlands	2019	1	1 Wetland SA	In Progress
146	Hilochee Osprey West	SWF	Wetlands	2023	1	1 Wetland SA	Proposed
147	Lake Marie	SWF	Wetlands	2020	1	1 Wetland SA	Proposed
148	Lake Marion Creek Scrub	SWF	Wetlands	2023	0		In Progress
149	Lake Maude	SWF	Wetlands	2020	1	1 Wetland SA	Proposed

ID	Site Name	WMD	Site Type	Estimated Construction FY	Number New Well(s)	Well Type(s)	Status/Completion FY
150	Lake Ned (Street Sanctuary)	SWF	Wetlands	2020	1	1 Wetland SA	Proposed
151	Lakeland Highlands Scrub	SWF	Wetlands	2023	1	1 Wetland SA	Proposed
152	Richloam Upper Little Withlacoochee	SWF	Wetlands	2019	0		In Progress
153	Saddle Blanket Scrub 1	SWF	Wetlands	2022	1	1 Wetland SA	Proposed
154	Saddle Blanket Scrub 2	SWF	Wetlands	2022	0		Proposed
155	Saddle Blanket Scrub 3	SWF	Wetlands	2022	1	1 Wetland SA	Proposed
156	The Pasture 1	SWF	Wetlands	2019	1	1 Wetland SA	In Progress
157	The Pasture 2	SWF	Wetlands	2019	1	1 Wetland SA	In Progress
158	The Pasture 3	SWF	Wetlands	2019	1	1 Wetland SA	In Progress
159	Tiger Creek 1	SWF	Wetlands	2022	1	1 Wetland SA	Proposed
160	Tiger Creek 2	SWF	Wetlands	2022	1	1 Wetland SA	Proposed
161	Van Fleet 2	SWF	Wetlands	2023	0		Proposed
162	Lake Apopka Marsh Flow-way Site #1	SJR	Wetlands	2019	1	1 SA wetlands	Proposed
163	Lake Apopka Marsh Flow-way Site #2	SJR	Wetlands	2019	1	1 SA wetlands	Proposed
164	Ferndale Preserve-Lake County BCC	SJR	Wetlands	2023	1	1 SA wetlands	Proposed
165	Black Bear Wilderness Area Site #1	SJR	Wetlands	2020	1	1 SA wetlands	Proposed
166	City of Altamonte-Morse Street Parcel	SJR	Wetlands	2023	1	1 SA wetlands	Proposed
167	Lake McCoy Park-City of Apopka	SJR	Wetlands	2023	1	1 SA wetlands	Proposed
168	Rock Springs Run State Reserve Site #3	SJR	Wetlands	2020	1	1 SA wetlands	Proposed
169	Rock Springs Run State Reserve Site #4	SJR	Wetlands	2020	1	1 SA wetlands	Proposed

ID	Site Name	WMD	Site Type	Estimated Construction FY	Number New Well(s)	Well Type(s)	Status/Completion FY
170	Rock Springs Run State Reserve Site #5	SJR	Wetlands	2020	1	1 SA wetlands	Proposed
171	Little-Big Econ State Forest #3	SJR	Wetlands	2021	1	1 SA wetlands	Proposed
172	Little-Big Econ State Forest #4	SJR	Wetlands	2021	1	1 SA wetlands	Proposed
173	Little-Big Econ State Forest #5	SJR	Wetlands	2021	1	1 SA wetlands	Proposed
174	Lower Wekiva State Park #1	SJR	Wetlands	2020	1	1 SA wetlands	Proposed
175	Wekiva Springs State Park Site #2	SJR	Wetlands	2020	1	1 SA wetlands	Proposed
176	Tosohatchee WMA #2	SJR	Wetlands	2021	1	1 SA wetlands	Proposed
177	Hal Scott Regional Park	SJR	Wetlands	2022	1	1 SA wetlands	Proposed
178	Charles H Bronson State Forest Site #3	SJR	Wetlands	2022	1	1 SA wetlands	Proposed
179	FDOT/Florida Turnpike-East Johns Lake Pond: Parcel 27222800000005	SJR	Wetlands	2023	1	1 SA wetlands	Proposed
180	Geneva Wilderness Area Site #1	SJR	Wetlands	2020	1	1 SA wetlands	Proposed
181	Black Hammock Wilderness Area #1	SJR	Wetlands	2021	1	1 SA wetlands	Proposed
182	Shenandoah Park-City of Orlando	SJR	Wetlands	2023	1	1 SA wetlands	Proposed
183	Black Hammock Wilderness Area #2	SJR	Wetlands	2021	1	1 SA wetlands	Proposed
184	Maitland Community Park-Mayo Ave	SJR	Wetlands	2023	1	1 SA wetlands	Proposed
185	Sunny Town Park-City of Casselberry	SJR	Wetlands	2023	1	1 SA wetlands	Proposed
186	City of Sanford-East Lake Jesup Property	SJR	Wetlands	2024	1	1 SA wetlands	Proposed
187	Lake Destiny Soccer Park-City of Maitland	SJR	Wetlands	2025	1	1 SA wetlands	Proposed
188	Camp Lonesome 2	SF	Wetlands	2019	1	1 SA wetlands	Proposed

ID	Site Name	WMD	Site Type	Estimated Construction FY	Number New Well(s)	Well Type(s)	Status/Completion FY
189	Walk in the Water 2	SF	Wetlands	2019	1	1 SA wetlands	In Progress
190	Disney Wilderness Preserve	SF	Wetlands	2019	0	Utilizing existing well cluster (1 SA, 1 Stage)	In Progress
-	Unnamed Wetland Placeholders	SF	Wetlands	2020	2	2 SA wetlands	Proposed
Notes WL = water level WQ = water quality SF = South Florida Water Management District SJR = St. Johns River Water Management District SWF = Southwest Florida Water Management District SA = surficial aquifer IA = intermediate aquifer UFA = Upper Floridan aquifer LFA = Lower Floridan aquifer					236		