

Environmental Measures Team Update

*Groundwater Availability Team Meeting
November 14, 2018*



Kym Rouse Holzwart

Senior Environmental Scientist

Southwest Florida Water Management District

Environmental Measures Team Chair

Introduction

Approved option for determining wetland stress for 2020 update to CFWI RWSP:

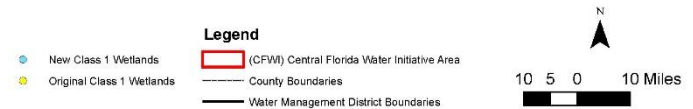
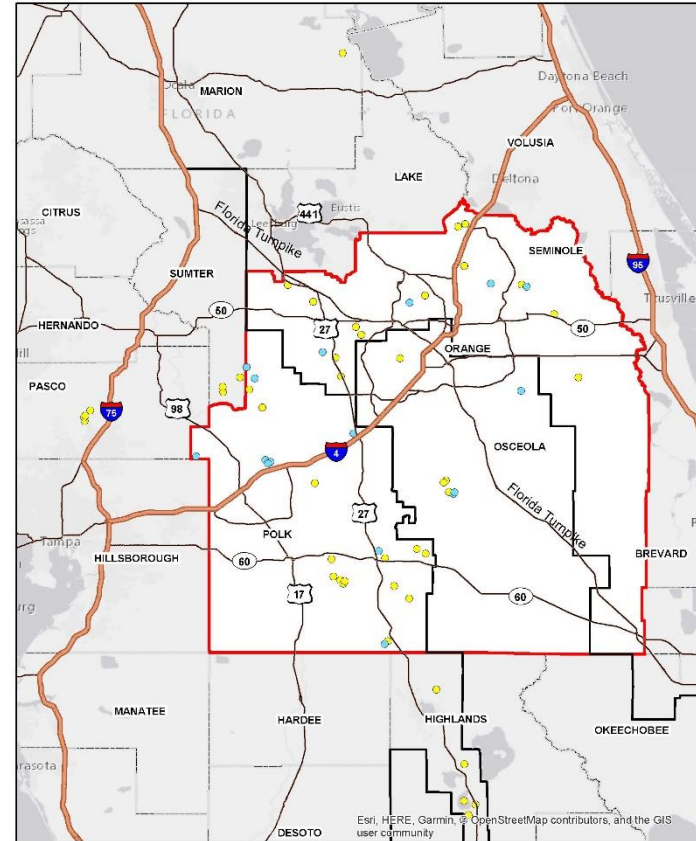
- Statistical analysis and risk assessment (same methodology used for 2015 CFWI RWSP) with expanded EMT dataset and updated model (ECFTX)



Current Progress

- Final expanded Class 1 wetland dataset: 59 wetlands (44 original + 15 new)
- Original dataset of 44 wetlands:
 - 26 Ridge wetlands (15 NS, 11 S)
 - 18 Plain wetlands (10 NS, 8 S)
- New dataset of 59 wetlands:
 - 28 Ridge wetlands (19 NS, 9 S)
 - 31 Plain wetlands (24 NS, 7S)

Class 1 Wetlands Assessed



Current Progress

- Data exploration for analysis preparation complete
- Finalized period-of-record of water level data that will be used for analysis: 2009-2017 (9 years)
 - Original analysis: 2006-2011 (6 years)
- Equations to calculate the probability of future wetland stress are close to being updated for new dataset and new model
- GIS layers to calculate stressed/unstressed wetland acres are being updated



Tentative Schedule

- End of November/early December:
 - Finalize Class 1 wetland assessment report
 - Complete wetland analysis preparation tasks
 - Complete draft EMT Scope of Work

