

2020 CFWI Regional Water Supply Plan

Reclaimed Water Use Projections



***R. Thomas Kiger, P.E.
October 2018***



2040 Reclaimed Flow Projections: Methods

1) Collect 2015 reclaimed water use data from FDEP

2) Create a baseline map of wastewater service areas, by WWTF.

3) Use BEBR parcel-level population projections to estimate current sewer population, by WWTF

4) Use DoH septic tank coverage to remove septic tank populations

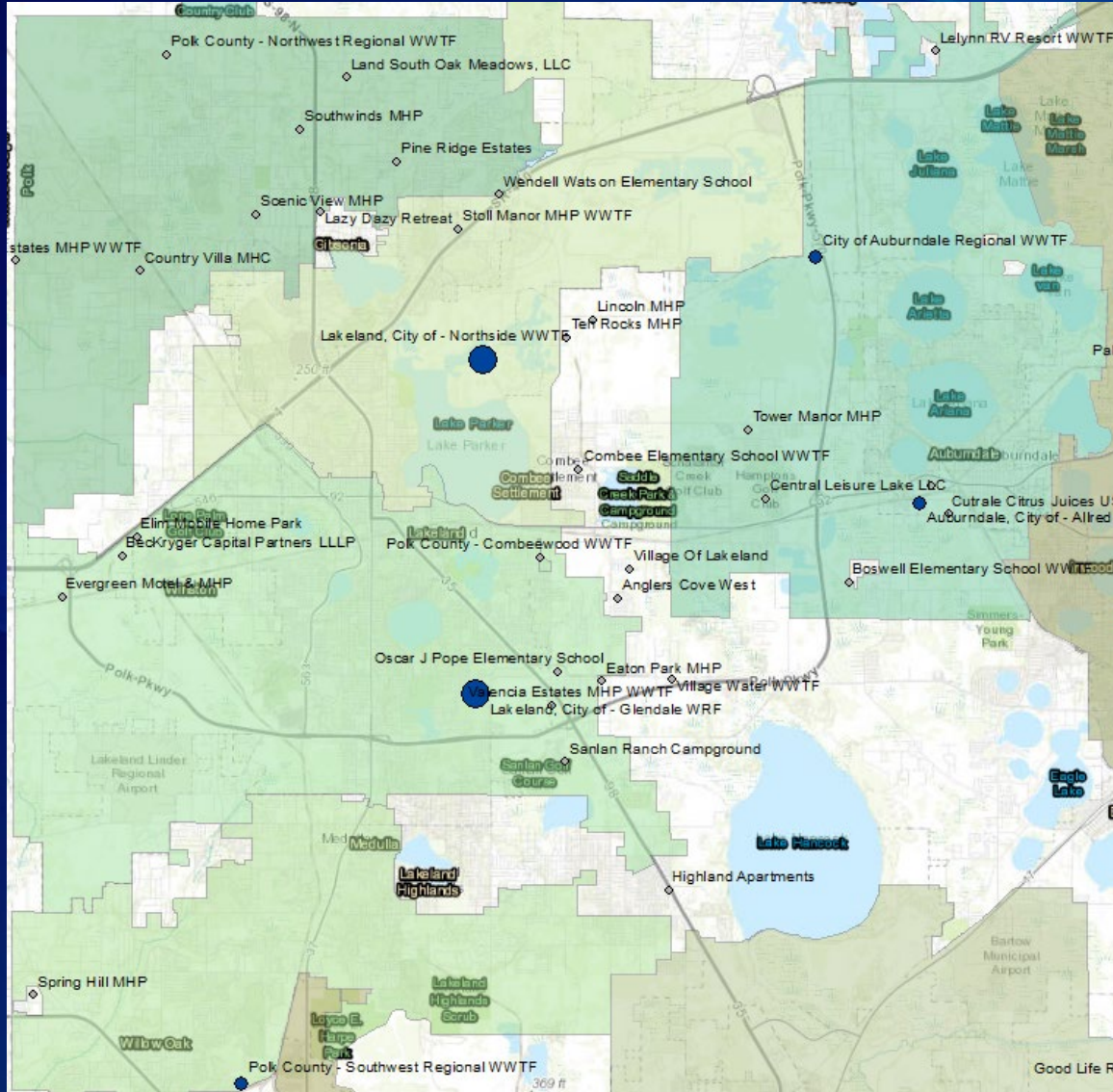
5) Project future population growth by WWTF for 2040.

6) Use 73 gpcd with projected population growth to project future WWTF flows.

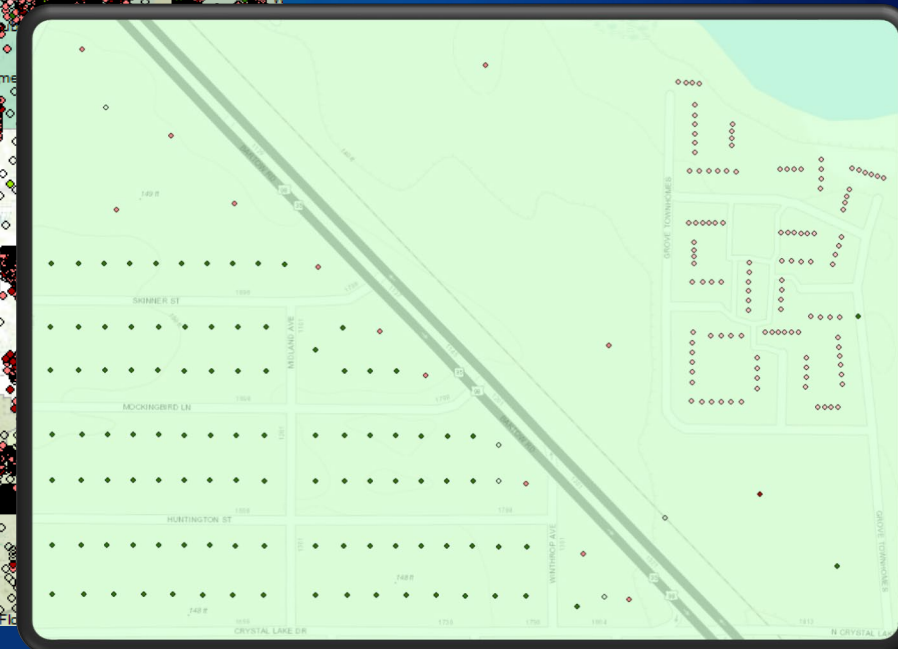
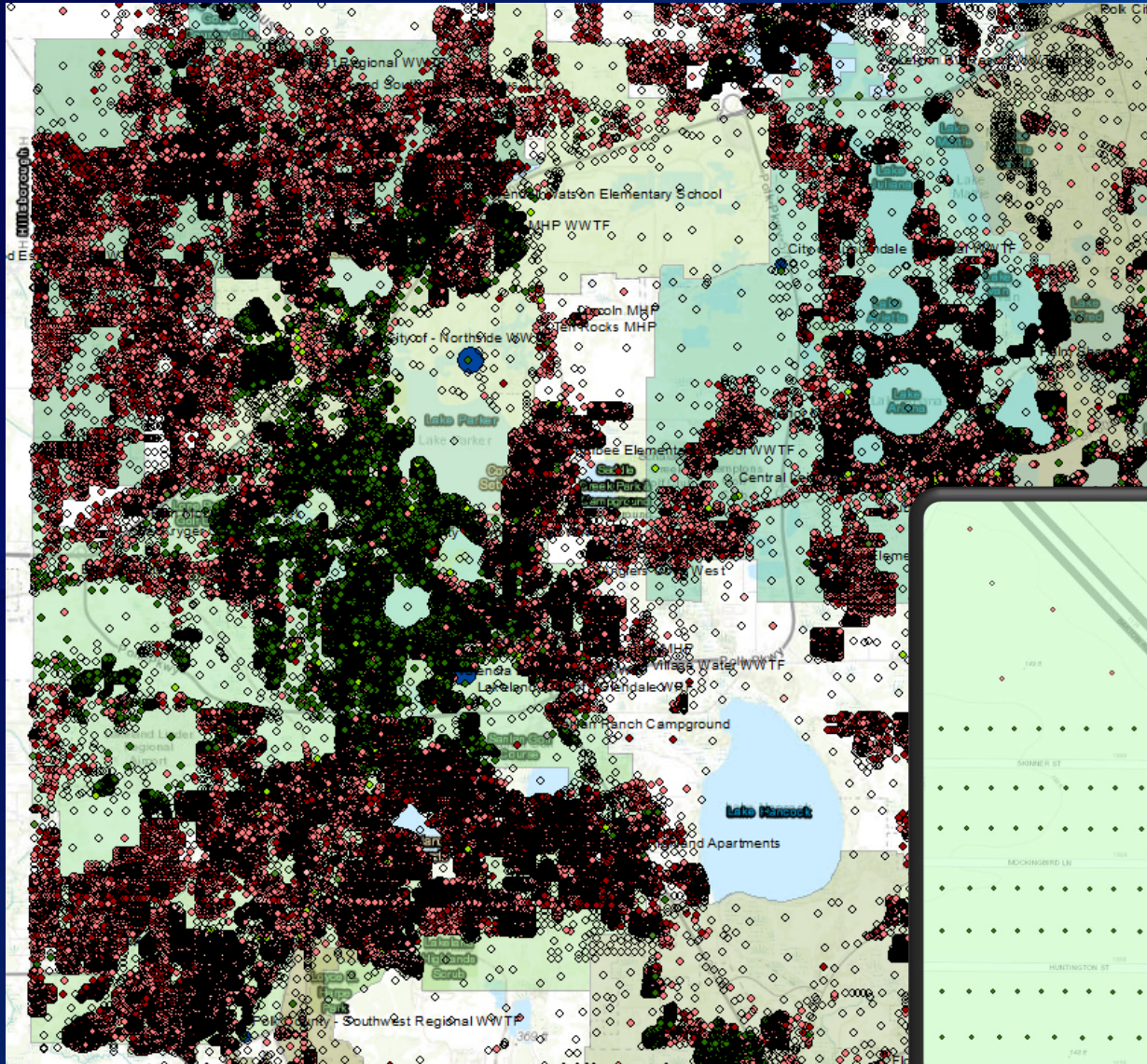
2015
Water Use
Baseline

2040
Water Use
Projections

CFWI Reclaimed Water Use Projections: WWSA Map



CFWI Reclaimed Water Use Projections: WWSA Map + BEBR Populations



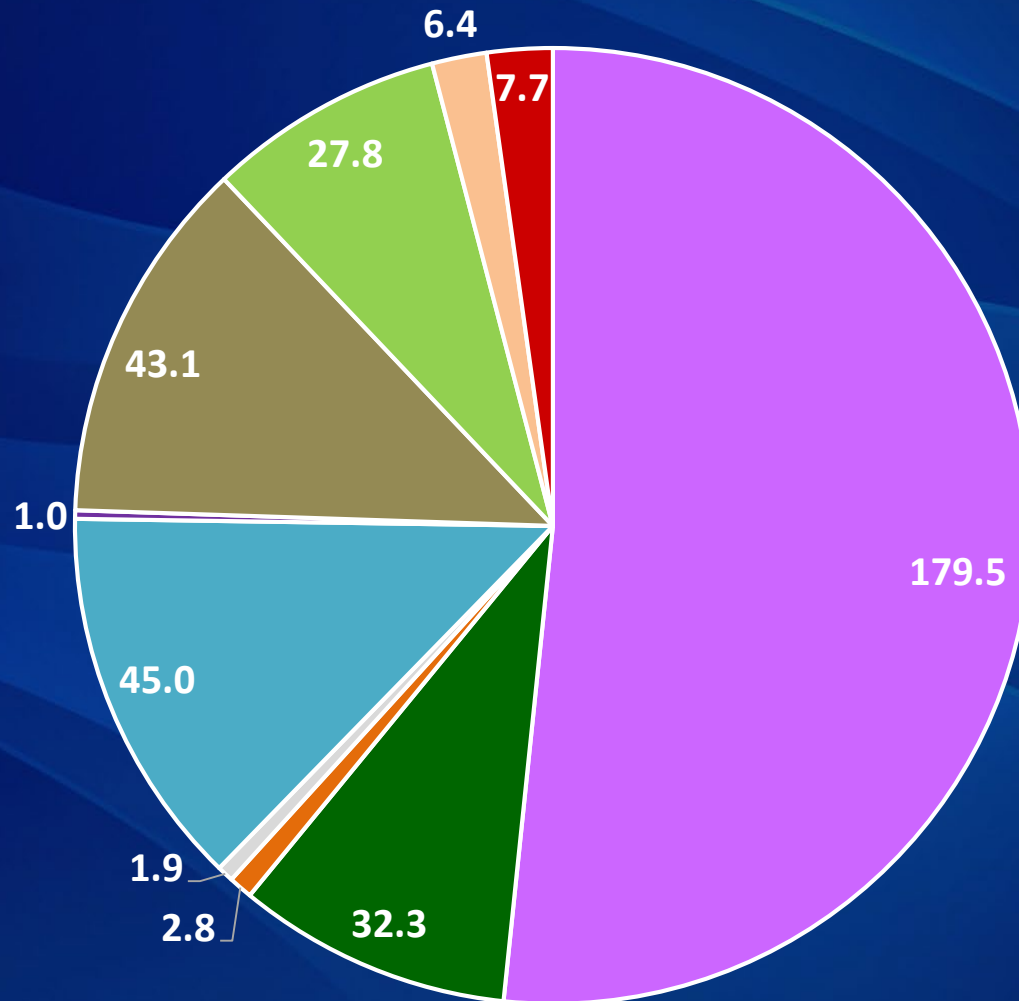
CFWI Reclaimed Water Use Projections: Results

County	Waste Water Service Area 2015 Population	Waste Water Service Area 2040 Population	2015 Total WW Flows	2040 WW Flow Projection
Brevard	165,599	207,438	2.0	4.9
Lake (CWFI)	54,715	98,368	5.1	9.5
Orange	980,352	1,538,311	103.3	174.7
Osceola	320,800	604,606	26.5	49.8
Polk	376,510	555,185	36.6	47.1
Seminole	570,079	692,242	50.9	58.8
CFWI Total	2,468,055	3,696,151	224.3	344.8



CFWI Reclaimed Water Use Projections: Projected 2040 Reuse

- Res Irrig/
Landscape
- Golf Courses
- Ag Irrig
- Sprayfields
- Recharge/ RIBS
- IPR
- Industrial
- Wetlands
- Other Reuse
- Disposal



Thank You!



R. Thomas Kiger, P.E.
Thomas.kiger@watermatters.org

