

Joint Public Workshop for Minimum Flows and Levels Priority Lists and Schedules for the CFWI Area



St. Johns River Water Management District (SJRWMD)
Southwest Florida Water Management District (SWFWMD)
South Florida Water Management District (SFWMD)

September 25, 2018
St. Cloud, Florida

1

Agenda

1. Introductions and Background..... Don Medellin, SFWMD
2. SJRWMD MFLs Priority List....Andrew Sutherland, SJRWMD
3. SWFWMD MFLs Priority List...Doug Leeper, SWFWMD
4. SFWMD MFLs Priority List.....Don Medellin, SFWMD
5. Stakeholder comments
6. Adjourn

2

Statutory Directive for MFLs

Water management districts or DEP must establish MFLs that set the limit or level...

*"...at which further **withdrawals** would be significantly harmful to the water resources or ecology of the area."*

Section 373.042(1), Florida Statutes

3

Statutory Directive for Reservations

Water management districts may...

*"...**reserve from use by permit applicants**, water in such locations and quantities, and for such seasons of the year, as in its judgment may be required for the protection of fish and wildlife or the public health and safety."*

Section 373.223(4), Florida Statutes

4

District Priority Lists and Schedules Meet Statutory and Rule Requirements

- Prioritization is based on the importance of waters to the State or region, and the existence of or potential for significant harm
- Includes waters experiencing or reasonably expected to experience adverse impacts
- MFLs the districts will voluntarily subject to independent scientific peer review are identified
- Proposed reservations are identified
- Listed water bodies that have the potential to be affected by withdrawals in an adjacent water management district are identified

5

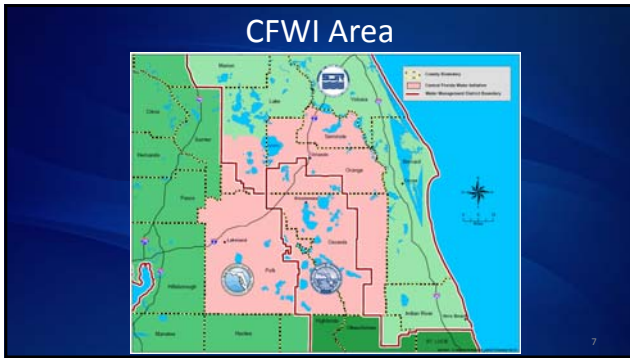
2018 Draft Priority List and Schedule

- Annual priority list and schedule required by statute for each district
- Presented to respective District Governing Boards for approval
- Submitted to DEP for review by Nov. 15th
- Districts are seeking stakeholder input.

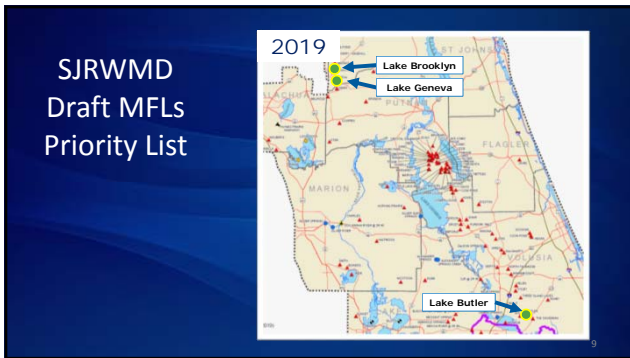
Written comments may be submitted to/by:

SJRWMD	Oct. 16, 2018	Andrew Sutherland - asuther1@sjrwmd.com
SWFWMD	Oct. 1, 2018	Doug Leeper - doug.leeper@watermatters.org
SFWMD	Oct. 1, 2018	Don Medellin - dmedelli@sfwmd.gov

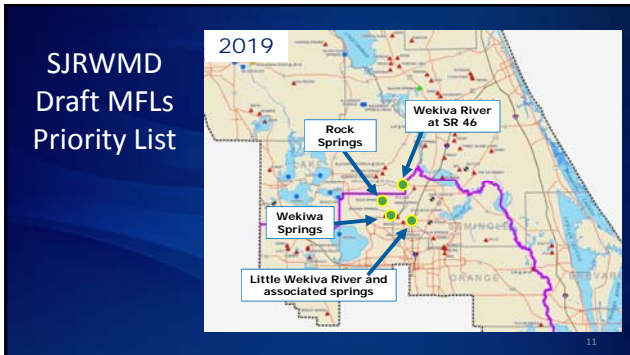
6



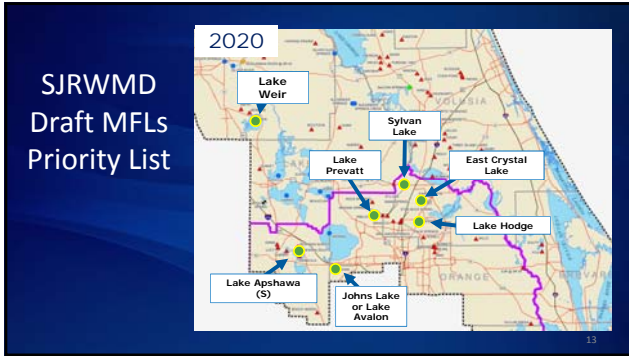
SJRWMD Draft 2018 MFLs Priority List and Schedule



<p>Lake Brooklyn</p>	}	<p><i>Reason for Re-evaluation:</i> SW modeling and frequency analysis revealed original criteria not appropriate</p>
<p>Lake Geneva</p>		<p><i>Previous Priority Year:</i> 2018</p> <p><i>Reason for Rescheduling:</i> Allow for completion of revisions to MFLs and modeling per peer review</p>
<p>Lake Butler</p>		<p><i>Reason for Listing:</i> Sentinel system in area with projected impact from withdrawal</p> <p><i>Previous Priority Year:</i> 2018</p> <p><i>Reason for Rescheduling:</i> Allow for update of surface water model</p>



<p>Wekiwa River at SR46</p> <p>Wekiwa Springs</p> <p>Rock Springs</p>	}	<p><i>Reason for Reevaluation:</i> regionally important water body; projected impact from withdrawal</p>
<p>Little Wekiwa River and associated springs</p>		<p><i>Previous Priority Year:</i> 2019 – No Change</p> <p><i>Reason for Listing:</i> part of approach for reevaluating Wekiwa Basin Springs, based on near-by ecological criteria</p> <p><i>Previous Priority Year:</i> 2019 – No Change</p>



S. Apshawa Lake
Prewatt Lake

Reason for Reevaluation: SW modeling and frequency analysis revealed original criteria not appropriate

Previous Priority Year: 2020 – No change

East Crystal Lake
Lake Hodge
Johns Lake or Lake Avalon

Reason for Listing: identified as sentinel system during 2006 water supply planning process

Previous Priority Year: 2020 – No change

14

Sylvan Lake

Reason for Re-evaluation: SW modeling and frequency analysis revealed original criteria not appropriate

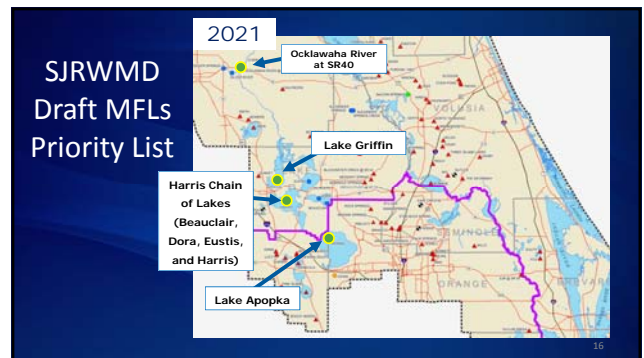
Previous Priority Year: 2020 – No change

Lake Weir

Reason for Re-evaluation: SW modeling and preliminary frequency analysis revealed original criteria not appropriate

Previous Priority Year: 2020 – No change

15



Lake Apopka

Lake Griffin

Harris Chain (Beauclair, Dora, Eustis and Harris)

Reason for Listing: regionally important water bodies; projected impact from withdrawal

Previous Priority Year: 2019

Reason for Rescheduling: Allow for resource balancing to complete 2019 and 2020 MFLs and for completion of CFWI peer review

Ocklawaha River at SR40

Reason for Listing: regionally important water body; projected impact from withdrawal

Previous Priority Year: 2021 – No change

17

SJRWMD Draft 2018 MFLs Priority List

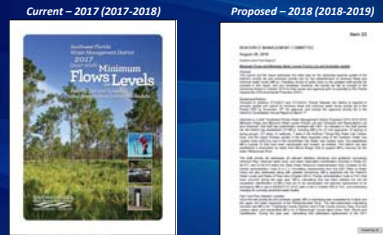
	New or Re-Evaluation	Water Body Name	Waterbody Type	County
MFLs to be adopted in 2019	New	Butler	Lake	Volusia
	Re-evaluation	Brooklyn	Lake	Clay
	Re-evaluation	Geneva	Lake	Clay
	New	Little Wekiva River and associated springs*	River / Springs	Seminole/Orange
	Re-evaluation	Wekiva River at SR 46 Bridge*	River	Seminole/Lake
MFLs to be adopted in 2020	Re-evaluation	Wekiva Springs*	Springs	Seminole/Orange
	Re-evaluation	Rock Springs*	Springs	Orange
	New	Johns/Avalon*	Lake	Orange
	New	East Crystal*	Lake	Seminole
	Re-evaluation	Hodge*	Lake	Seminole
MFLs to be adopted in 2021	Re-evaluation	Apshawa South*	Lake	Orange
	Re-evaluation	Prewatt*	Lake	Orange
	Re-evaluation	Sylvan*	Lake	Seminole
	Re-evaluation	Lake Weir	Lake	Marion
	New	Ocklawaha River at SR40	River	Marion
MFLs to be adopted in 2021	New	Apopka*	Lake	Lake/Orange
	New	Griffin	Lake	Lake
	New	Harris Chain of Lakes (Beauclair, Dora, Eustis, Harris)	Lake	Lake

18

SWFWMD 2018 Draft Priority List and Schedule

19

Priority Lists Posted on SWFWMD Web Site



- <https://www.swfwmd.state.fl.us/projects/mfl/documents-and-reports>
- Includes MFLs/reservations scheduled through 2027

20

SWFWMD Adopted Minimum Flows and Levels and Reservations



21

Draft SWFWMD Priority List and Schedule Changes

- New reevaluations identified:
 - Hillsborough County lakes: Cypress, Garden, Halfmoon, Jackson, Strawberry (2020)
 - SWUCA saltwater intrusion minimum aquifer level (2023)
 - *Mistakenly not included in the draft list tables*
 - Replacement of Rainbow River/Springs emergency rule (2019)

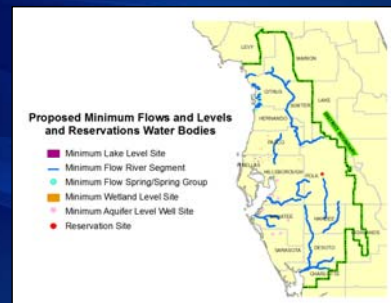
22

Draft SWFWMD Priority List and Schedule Changes

- Several water bodies rescheduled:
 - Lower Peace River, Shell Creek (2018 → 2020)
 - Lower Braden River, Lower Manatee River (2018 → 2021)
 - Lower and Upper Little Manatee River segments (2020 → 2022)
 - North Prong and South Prong Alafia River (2021 → 2027)
 - Lower Withlacoochee River, 3 Upper Withlacoochee River segments (2021 → 2024)
 - 3 Upper Peace River segments (2022 → 2025)
 - Cypress Creek (2023 → 2026)
 - Prairie Creek, Upper Shell Creek (2024 → 2025)
 - Lake Hancock [reservation] (2018 → 2020)

23

SWFWMD Proposed Minimum Flows and Levels and Reservations



24

SWFWMD Proposed Minimum Flows and Levels and Reservations in the CFWI Area

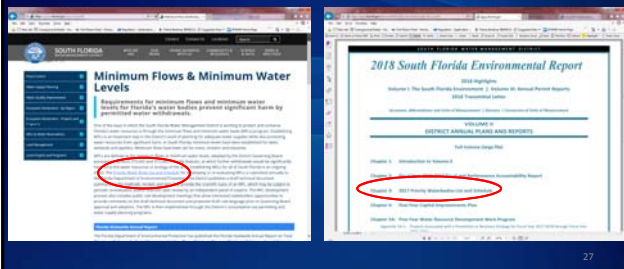
- Lake Hancock/Upper Peace River: reservation scheduled for 2020
- Charlie Creek: minimum flows scheduled for 2023
- 3 Upper Withlacoochee River segments: minimum flows scheduled for 2024
- 3 Upper Peace River segments: minimum flows scheduled for 2025
- North Prong Alafia River: minimum flows scheduled for 2027
- South Prong Alafia River: minimum flows scheduled for 2027

25

SFWMD 2018 Draft Priority List and Schedule

26

SFWMD Approved Priority List and Schedule Posted in two locations on the SFWMD Website



27

SFWMD Priority List and Schedule

Kissimmee River and Chain of Lakes

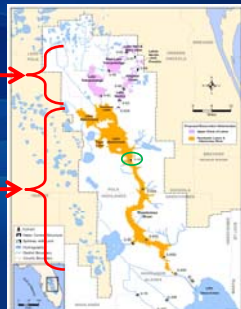


28

Current Draft Reservation Rule Language

Upper Chain of Lakes
Water will be reserved up to the proposed "Water Reservation Line"

Headwater Lakes & Kissimmee River
All of the water will be reserved



29

Kissimmee River and Chain of Lakes - Fish and Wildlife



- Fish Community
 - Approximately 50+ species
- Water Birds
 - 68 species of wetland dependent birds
 - 14 species of wading birds including Federally threatened wood stork
 - 16 species of ducks
- Amphibians and Reptiles
 - 24 species
- Mammals
 - 4 species wetland dependent

30

Kissimmee River and Chain of Lakes Water Reservation

- Currently in rule development process
- Draft rules are posted on the website:
 - <https://www.sfwmd.gov/our-work/water-reservations>
- Regionally significant waterbodies
- Approximately 170, 500 acres in size
- Reservation will protect the existing public investment of nearly \$1 Billion for the Kissimmee River Restoration
- Rule adoption targeted for 2020

31

Stakeholder Comment

Written comments may be submitted to/by:

SJRWMD	Oct. 16, 2018	Andrew Sutherland - asutherl@sjrwmd.com
SWFWMD	Oct. 1, 2018	Doug Leeper - doug.leeper@watermatters.org
SFWMD	Oct. 1, 2018	Don Medellin - dmedelli@sfwmd.gov

Governing Board Meetings open to the public:

SJRWMD	Nov. 13, 2018	Palatka
SWFWMD	Oct. 23, 2018	Brooksville
SFWMD	Oct. 11, 2018	West Palm Beach

32