

# Water Resource Assessment Team

## HAT and DMIT Update

*presented by:*

Mark Hammond - SWFWMD

Chris Sweazy – SFWMD

7-22-2016

[www.cfwewater.com](http://www.cfwewater.com)

# Update to the ECFTX Model

- Data Compilation – March 2015 to August 2016
- Pre-Calibration – June to August 2016
- Calibration – September 2016 to June 2017
- Peer Review – August 2016 to July 2017
- Address Peer Review Comments – August to October 2017
- Model Documentation – July to December 2017

# Data, Monitoring and Investigations Team

## Status and 2016 Work Plan Update

*presented by:*

Chris Sweazy – SFWMD

7-22-2016

[www.cfwewater.com](http://www.cfwewater.com)

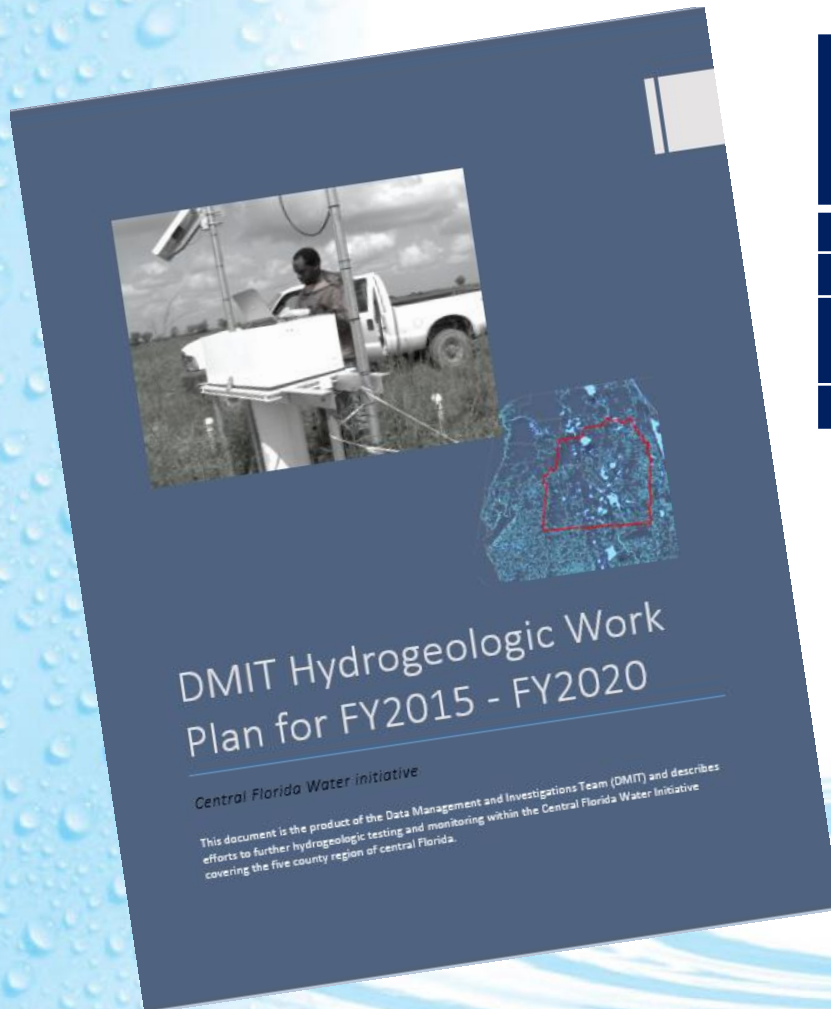
# Summary

- Guidance document requires an annual DMIT status report on activities and Work Plan update if necessary
- Recap what was in the 2015 Work Plan
- Summarize what was accomplished in FY15 and thus far in FY16
- Discuss hurdles and solutions
- Introduce and request action on the 2016 Work Plan Update

# 2015 Work Plan Schedule

Fiscal Year	Wetland Sites/SA	SA/IA Wells	UFA/APPZ Wells	LFA Wells	Annual Total
2015	5	5	5	3	18
2016	26	19	9	4	66
2017 - 2020	76	85	24	23	208
<b>TOTAL:</b>	<b>107</b>	<b>117</b>	<b>38</b>	<b>29</b>	<b>291</b>

Fiscal Year	Total Implementation Costs
2015	\$2.93
2016	\$7.53
2017 - 2020	\$23.67
<b>TOTAL:</b>	<b>\$34.13</b>



# DMIT Status Report

- FY15 Completion
  - 5 wells and 3 test cores constructed
  - Wetland site work initiated
  - Approximately \$550K spent
- FY16 Work Plan forecast
  - 40 wells including 19 wetland/SA sites
  - Screening and access of FY17 sites
  - Estimated \$2.04 million during FY16

# Issues Impeding Progress

- Site access concerns
- WMD staff changes
- Contractor issues
- Difficulty in acquiring necessary permits
- Access to funding

# Corrective Actions

- Executive management and FDEP assistance with streamlining access to State lands
- Appropriate WMD staff now assigned
- Pursuing cooperative efforts with permittees to upgrade existing wetland/SA monitoring stations
- Pursuing cooperative funding options to accelerate implementation



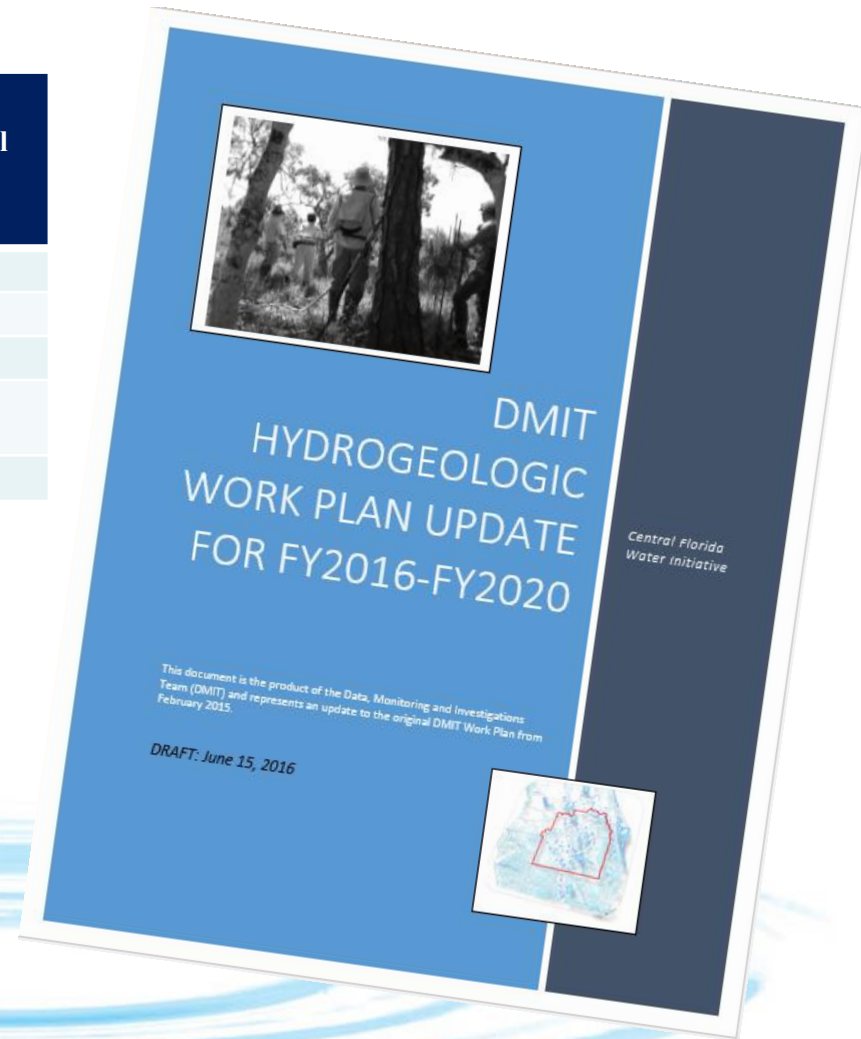
# 2016 DMIT Work Plan

- Summarizes completed FY15 and FY16 activities
- Identifies issues encountered and solutions moving forward
- Updates the work schedule for FY16 – FY20
- Identifies little change in the number of wells
- Cost reduction of \$0.9 million

# 2016 Work Plan Update

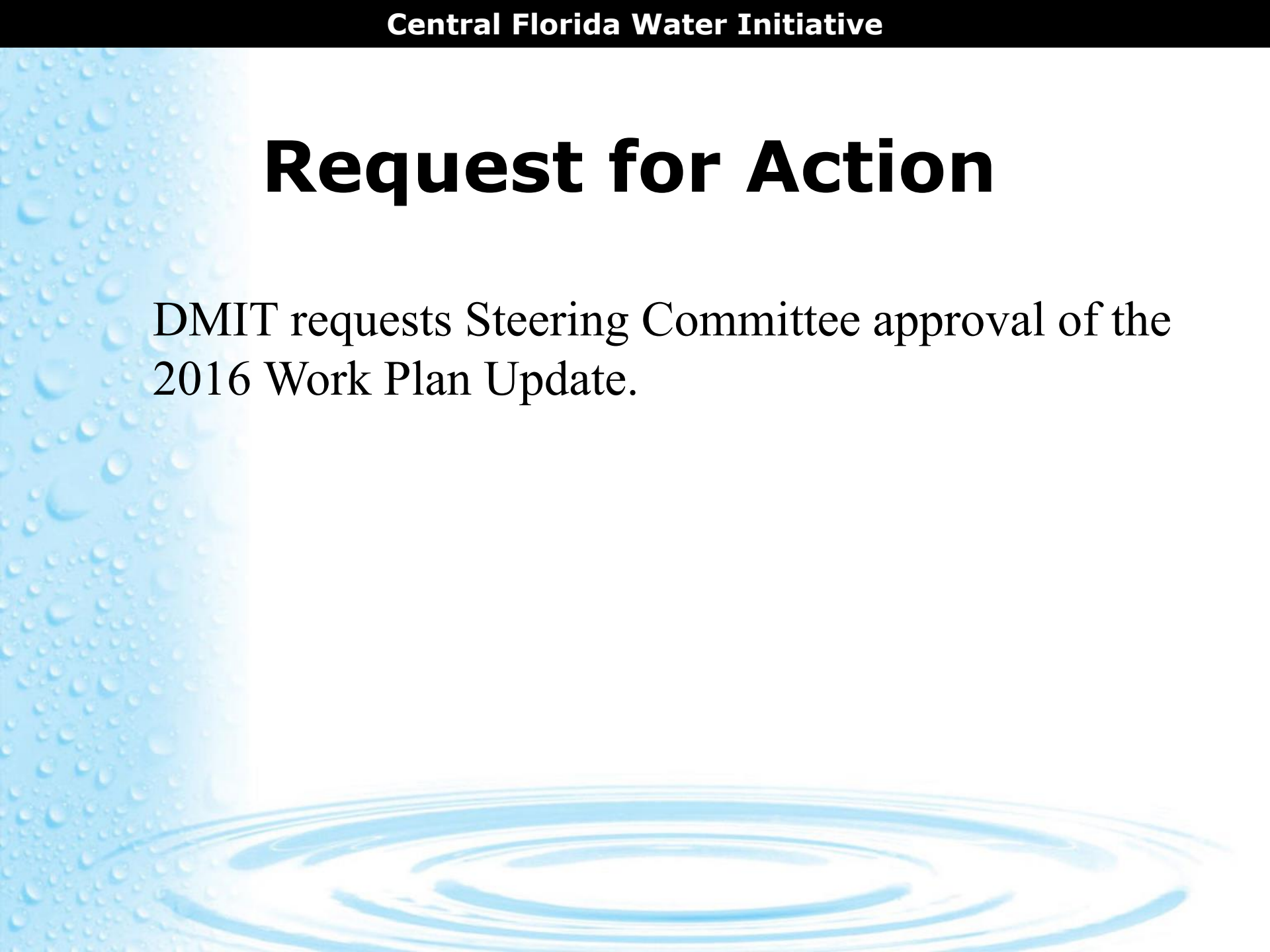
Fiscal Year	Wetland Sites/SA	SA/IA Wells	UFA/APPZ Wells	LFA Wells	Annual Total
2015	0	2	2	1	5
2016	19	11	8	2	40
2017	27	20	11	4	62
2018 - 2020	61	87	19	22	189
<b>TOTAL:</b>	<b>107</b>	<b>120</b>	<b>40</b>	<b>29</b>	<b>296</b>

Fiscal Year	Total Implementation Costs
2015	\$0.55
2016	\$2.04
2017	\$9.43
2018 - 2020	\$21.14
<b>TOTAL:</b>	<b>\$33.16</b>



# Request for Action

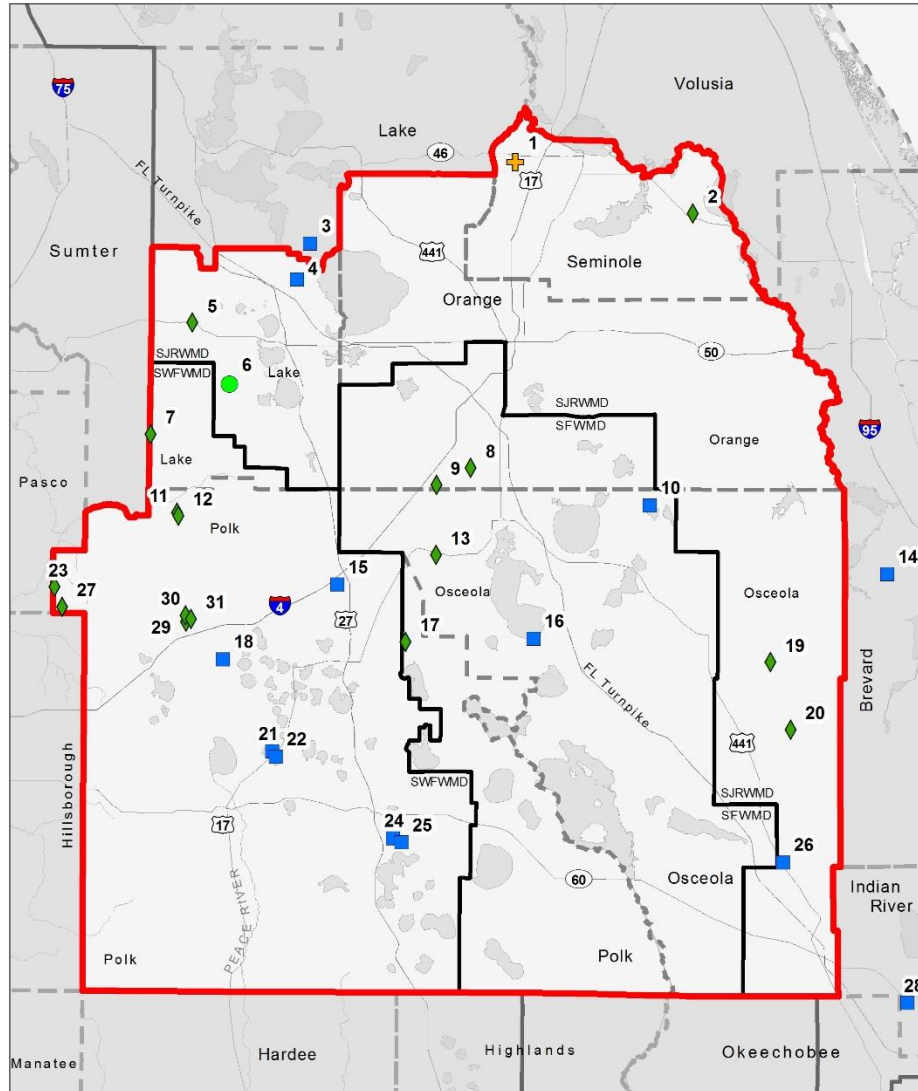
DMIT requests Steering Committee approval of the 2016 Work Plan Update.



Back-up slides follow



# Central Florida Water Initiative



**Fiscal Year 2016 Identified Monitoring Construction Sites**



- CFWI Boundary
- County Boundaries
- Water Management District Boundaries
- Minimum Flows and Levels Monitoring
- Water Level Monitoring
- ◆ Wetlands Monitoring
- + Wetlands/Minimum Flows and Levels Monitoring

(15) Map ID in Table

