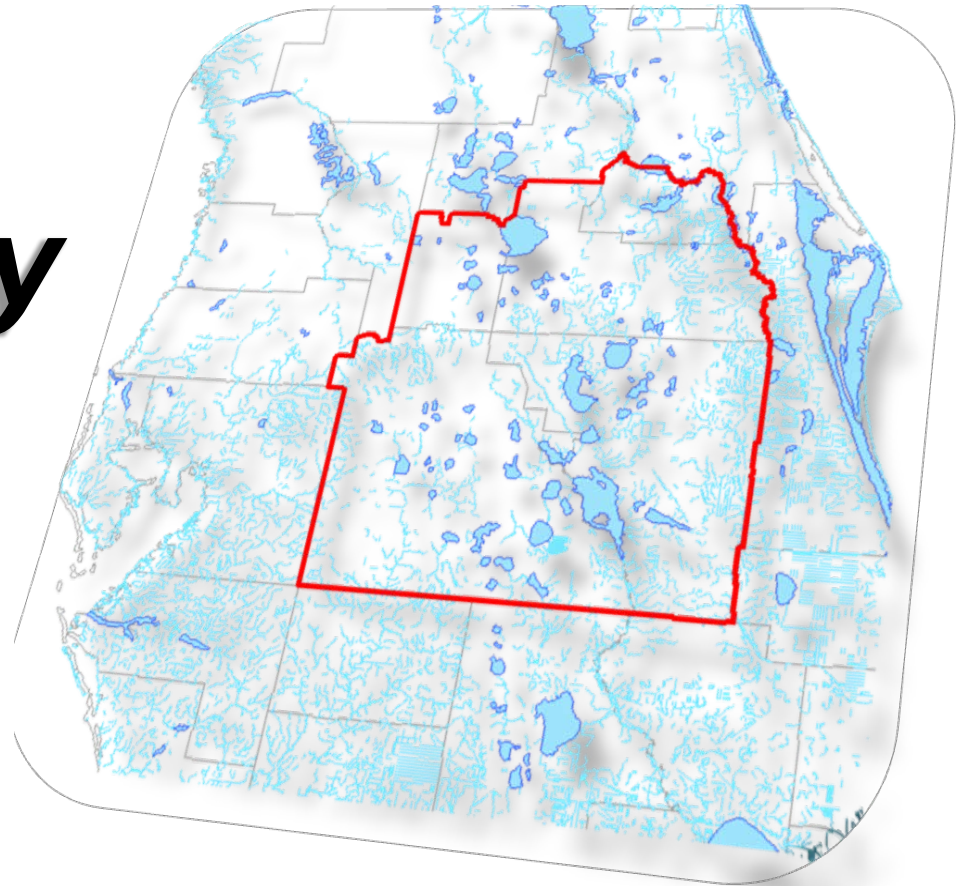


CFWI Steering Committee Meeting
August 28, 2015

Regulatory Team Update



Lennart J. Lindahl, P.E.
Regulatory Team Leader

Regulatory Topics

- **Following Dec 2013 FDEP Guidance Memo**
 - WMD coordination on pending applications
 - Review of permit duration
 - Water conservation criteria
- **Reporting consumptive use data**
 - Updated list of pending consumptive use permit applications
 - Available on www.cfwiwater.com
- **Ongoing topics**
 - Conjunctive Use
 - Self-Supplied Landscape Irrigation

Regulatory Subgroups

Three areas of focus:

1. Consumptive Use Permitting Prioritization

- Priority topics identified
- Opportunities for overlap with MFL subgroup and MOU efforts
- Developing consistency options
- Additional meetings to be scheduled

2. Minimum Flows and Levels

- High-level issues identified including:
 - Identification of Waterbodies
 - MFL establishment in CFWI
 - Prevention and Recovery Strategies
 - Use of MFLs in consumptive use permitting
- Meetings are ongoing

3. Memorandum of Understanding

Regulatory Team

Upcoming

- Continued progress on regulatory topics



An alligator makes a meal out of a tilapia in the KRRP Phase I restoration area floodplain (5/7/2015)