



# Central Florida Water Initiative Public Workshop Agenda

June 1, 2015

- 4:30 – 5:00 pm Welcome
- 5:00 – 5:30 pm Presentation of the Draft 2035 Water Resources Protection and Water Supply Strategies Plan
- 5:30 – 6:30 pm Public Comment

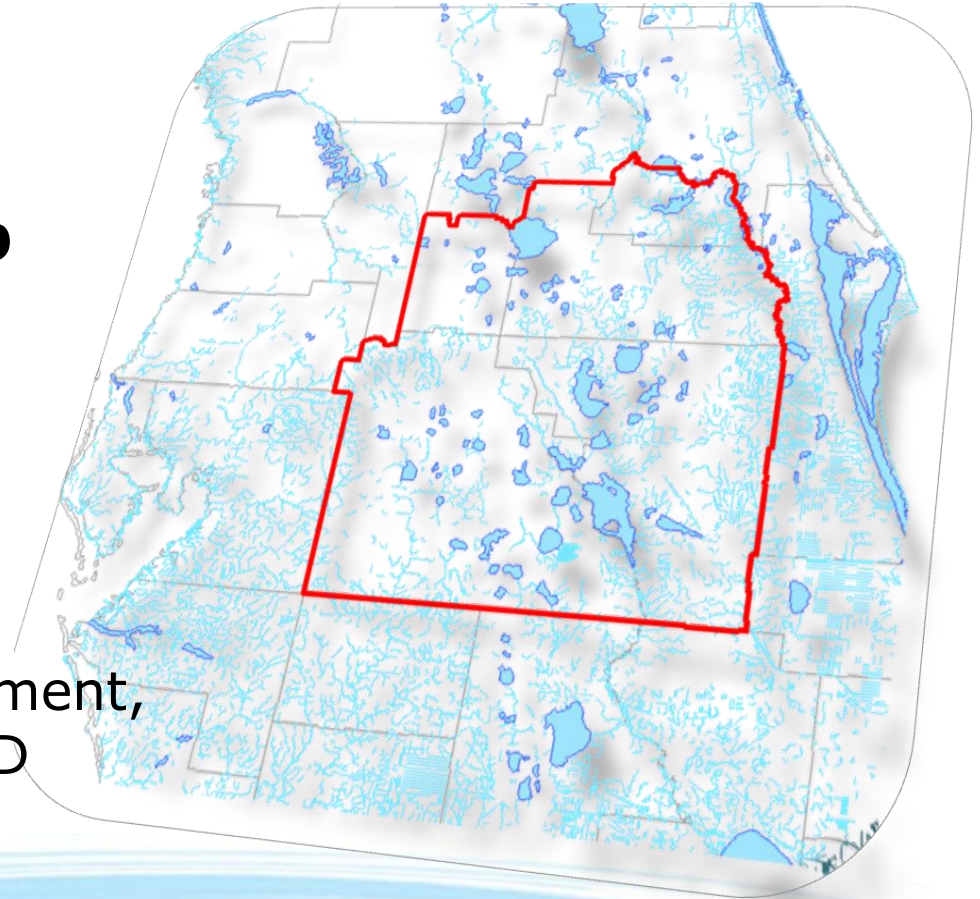
# Central Florida Water Initiative

**Public Workshop**

June 1, 2015

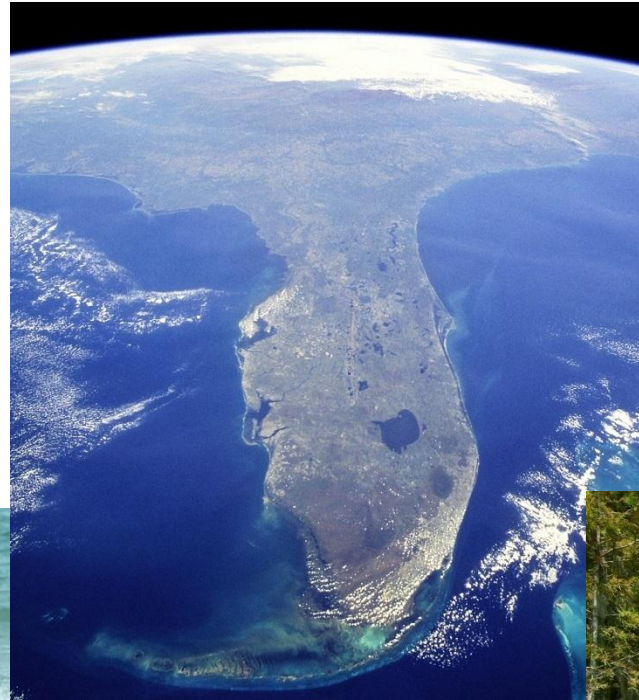
**Mark Hammond**

Director, Resource Management,  
Southwest Florida WMD



# Florida's Water Resources

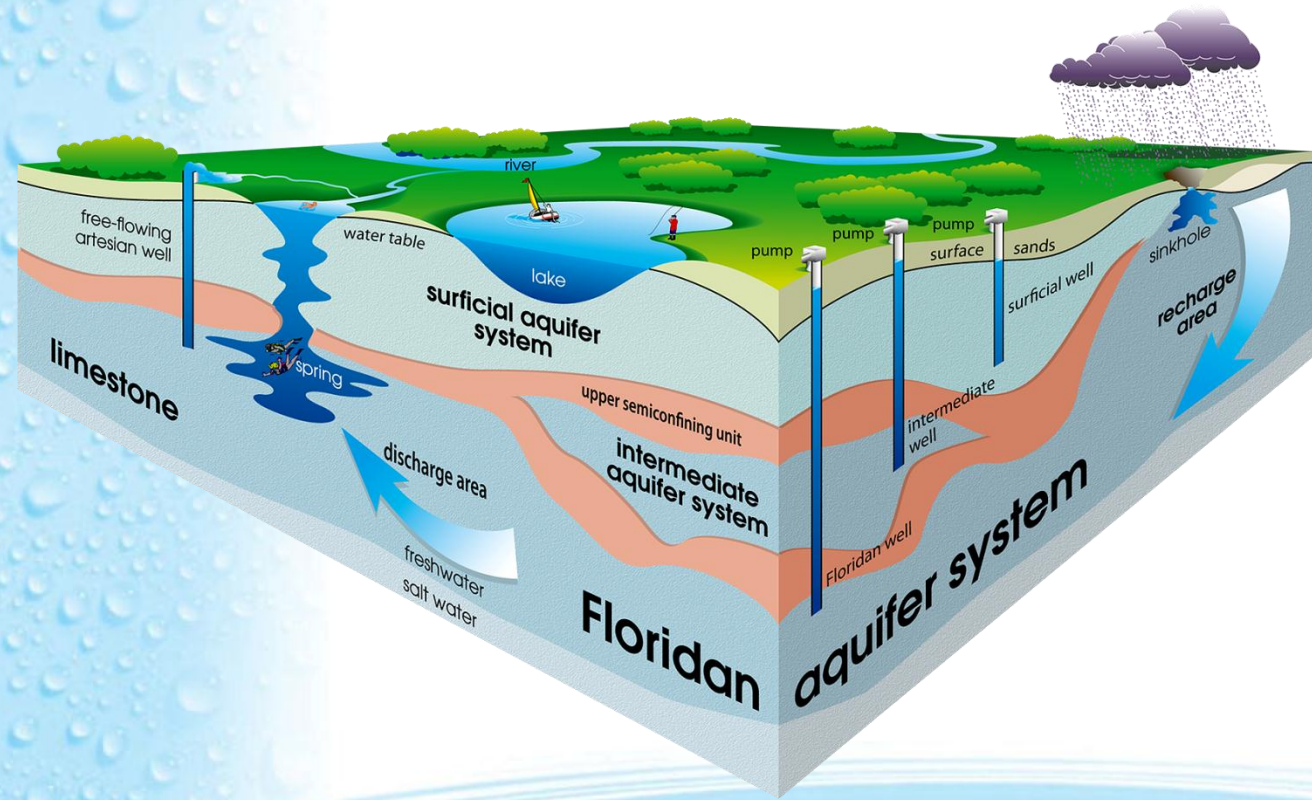
- About 54 inches of rain annually
- 7,700 lakes
- 50,000 miles of rivers and streams
- 700 springs



Quality of Life  
Recreation  
Economy  
Agriculture



# Where Does Our Water Come From?



More than 90% of our water comes from the aquifer system.



# What Happens When We Overuse the Aquifer?

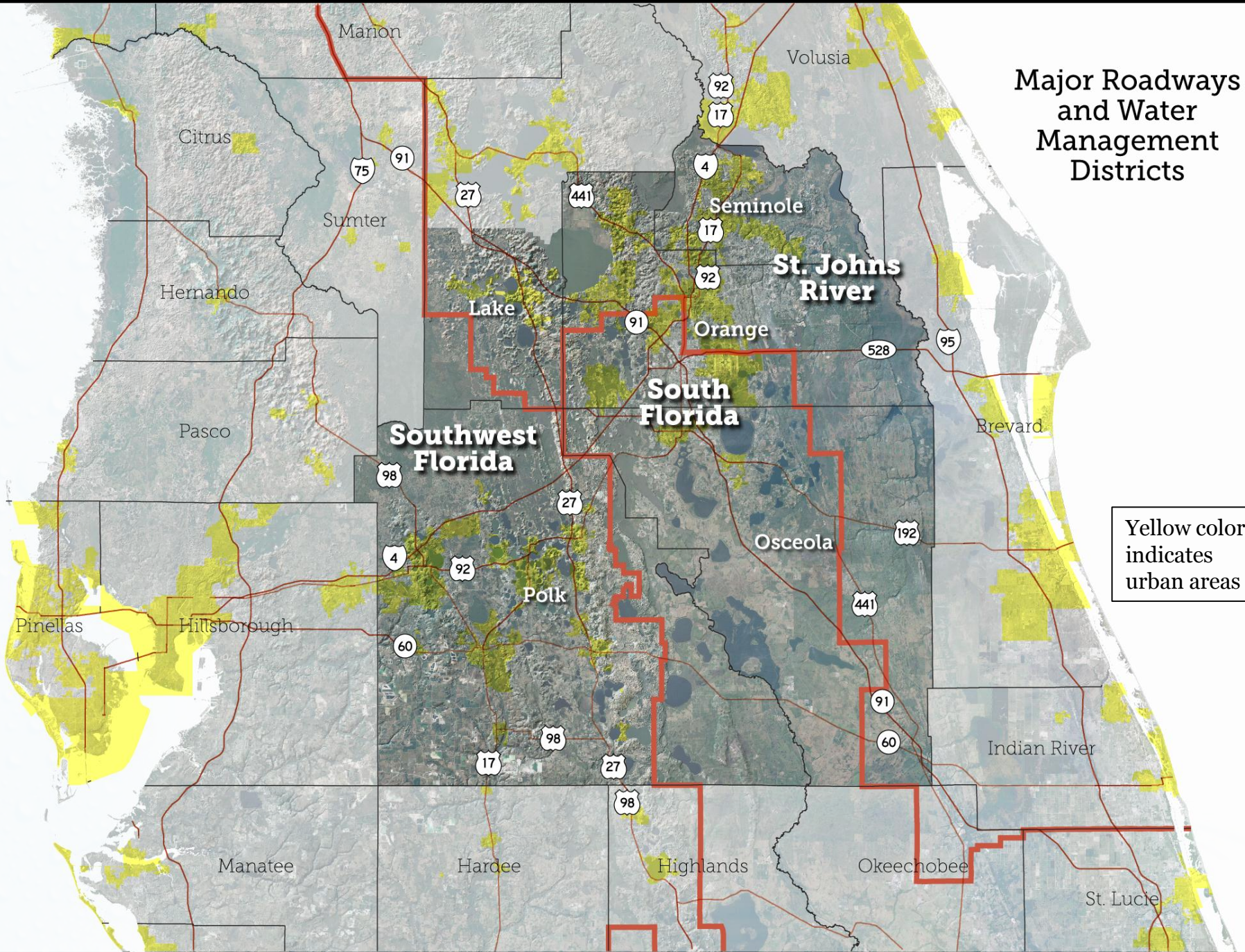
- Wetlands
- Spring flow
- Lake levels



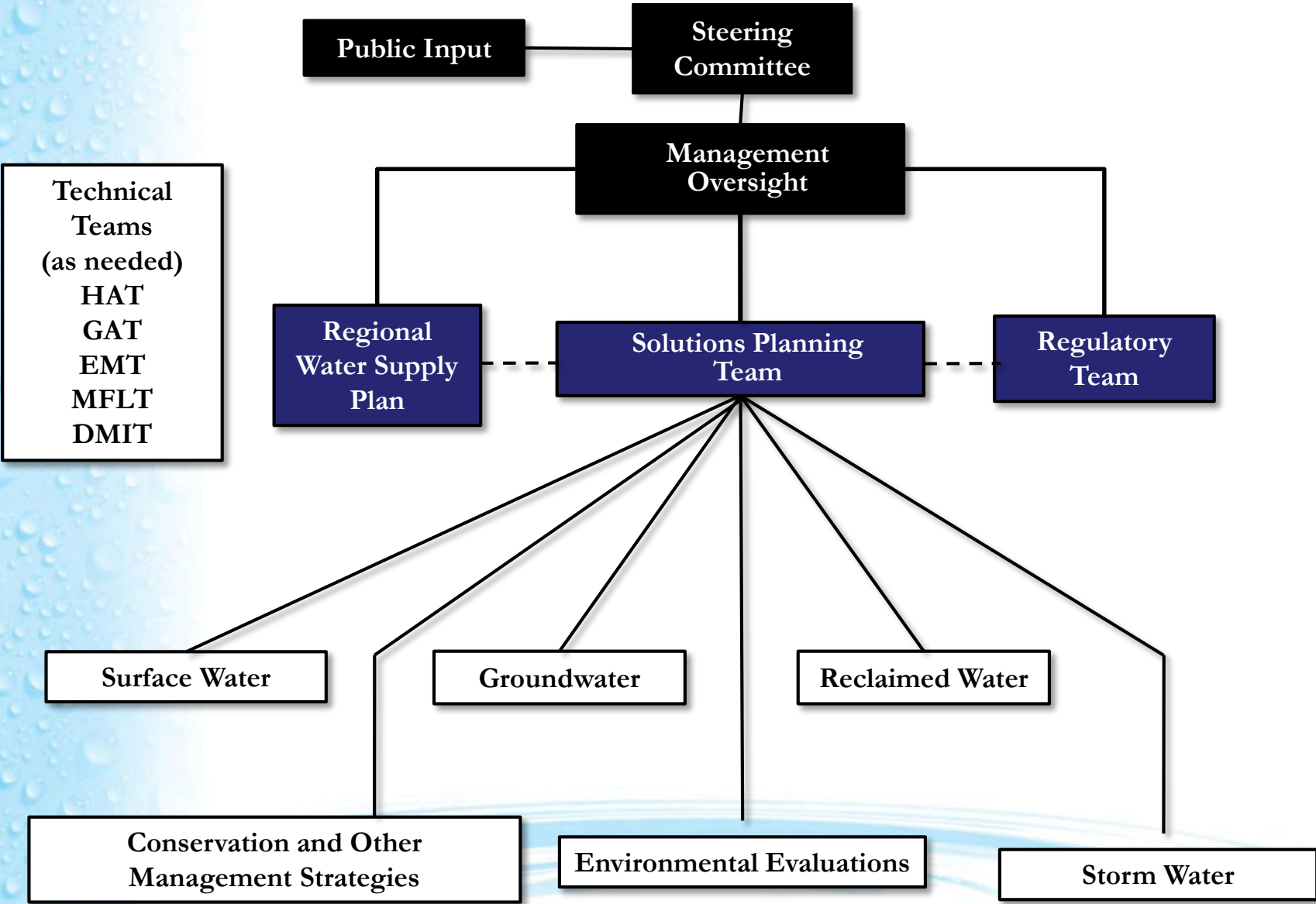
# What is CFWI?

A collaborative **regional** water supply effort to protect, conserve and restore our water resources.

# Central Florida Water Initiative



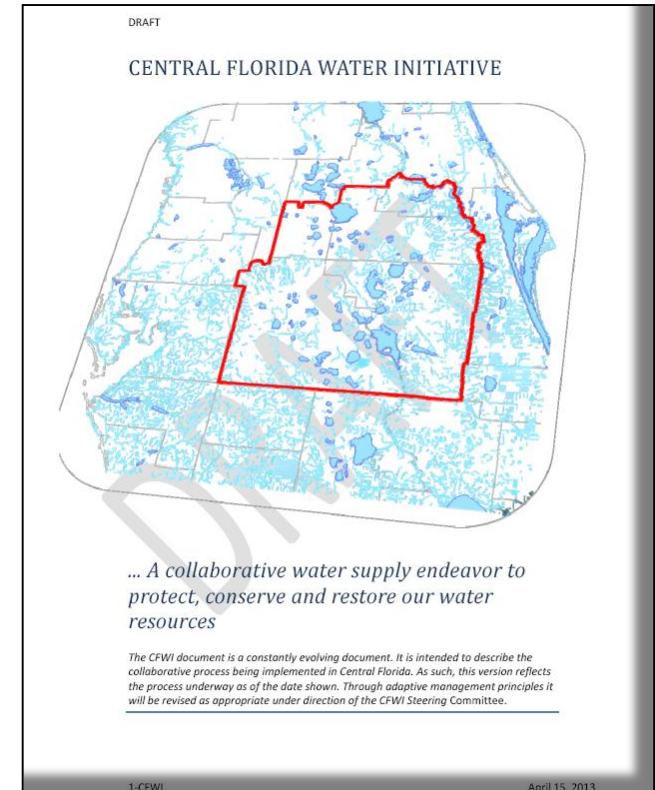
# Central Florida Water Initiative





# Guidance Document Principles

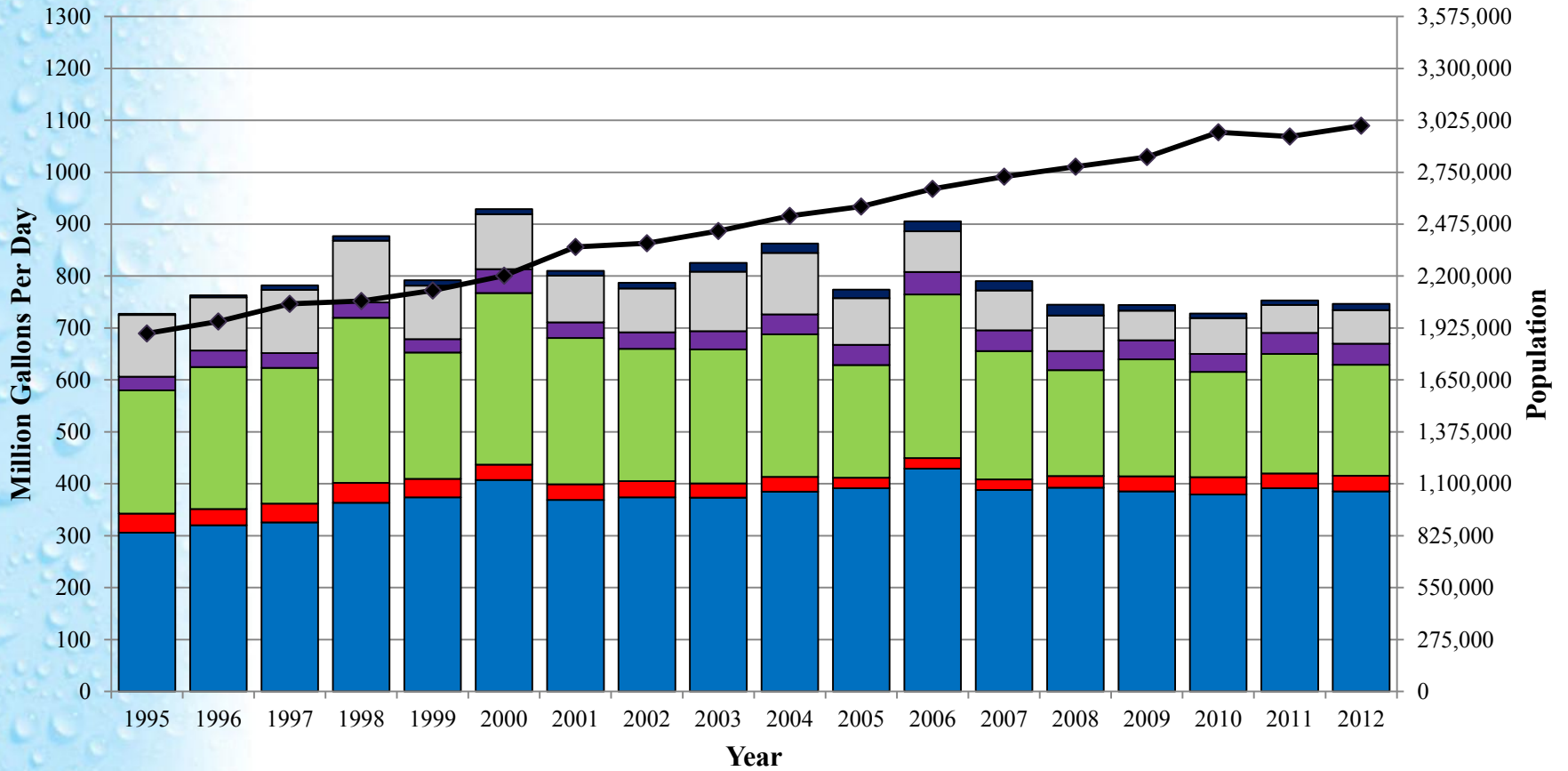
1. Identify sustainable quantities of groundwater sources
2. Develop strategies to meet water demands
3. Establish consistent rules



Guidance Document available at [cfwiwater.com](http://cfwiwater.com)

# Central Florida Water Initiative

## Historic Water Use -vs- Population in the CFWI



Public Supply

Agriculture

Commercial / Industrial / Institutional & Mining / Dewatering

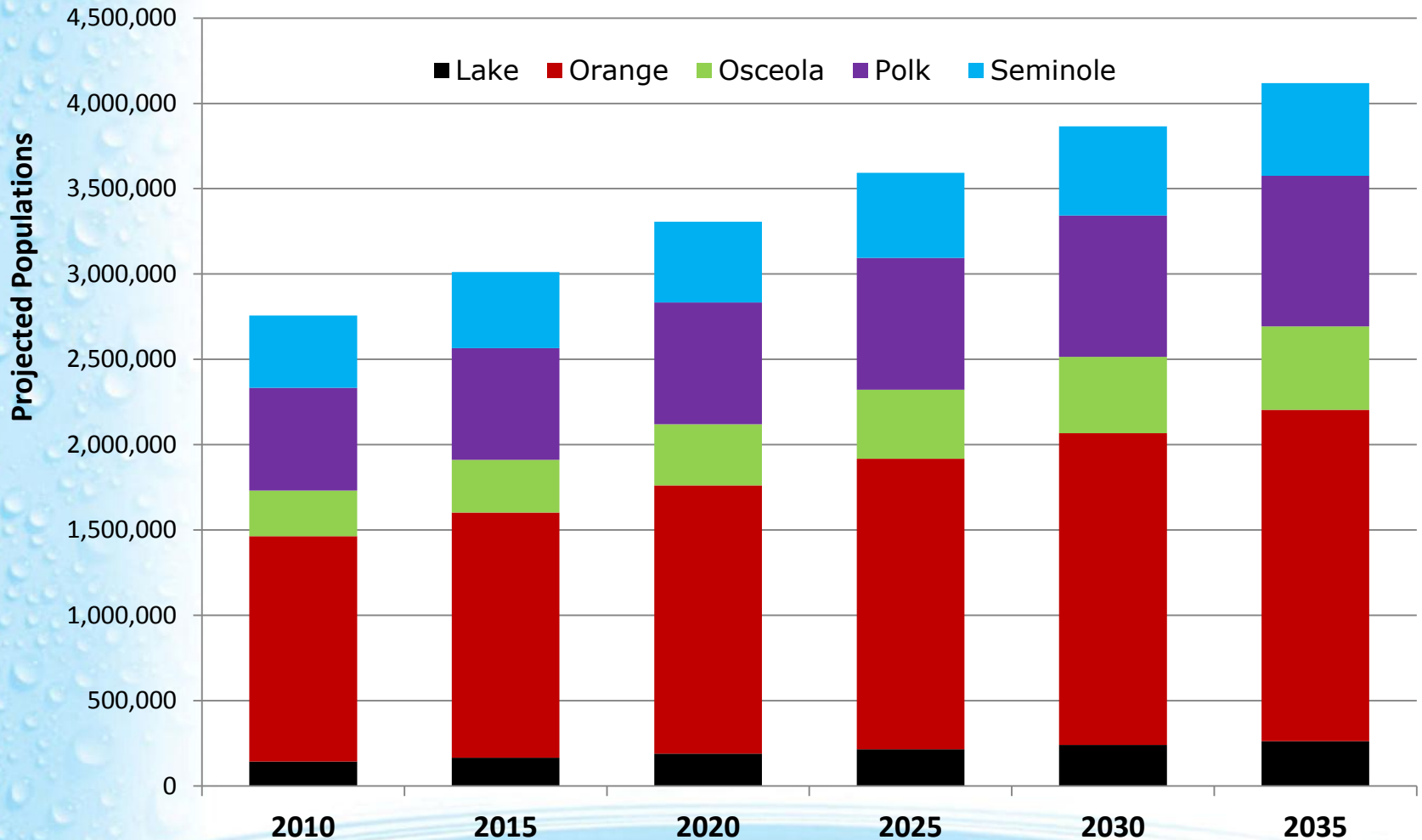
Historic Population in the CFWI

Domestic Self-Supply

Landscape / Recreational / Aesthetic

Power Generation

# Projected Population



**Projected Increase of 1.4 Million People**

# Water Use

All Classes

MGD

1200

1000

800

600

400

200

0

1960

1970

1980

1990

2000

2010

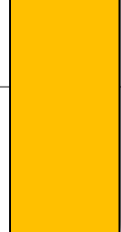
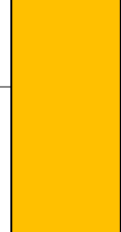
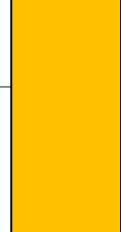
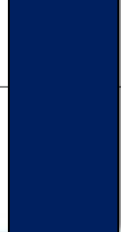
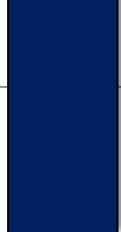
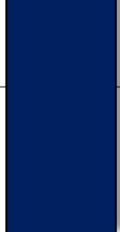
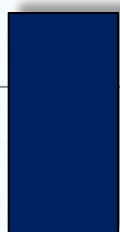
2020

2030

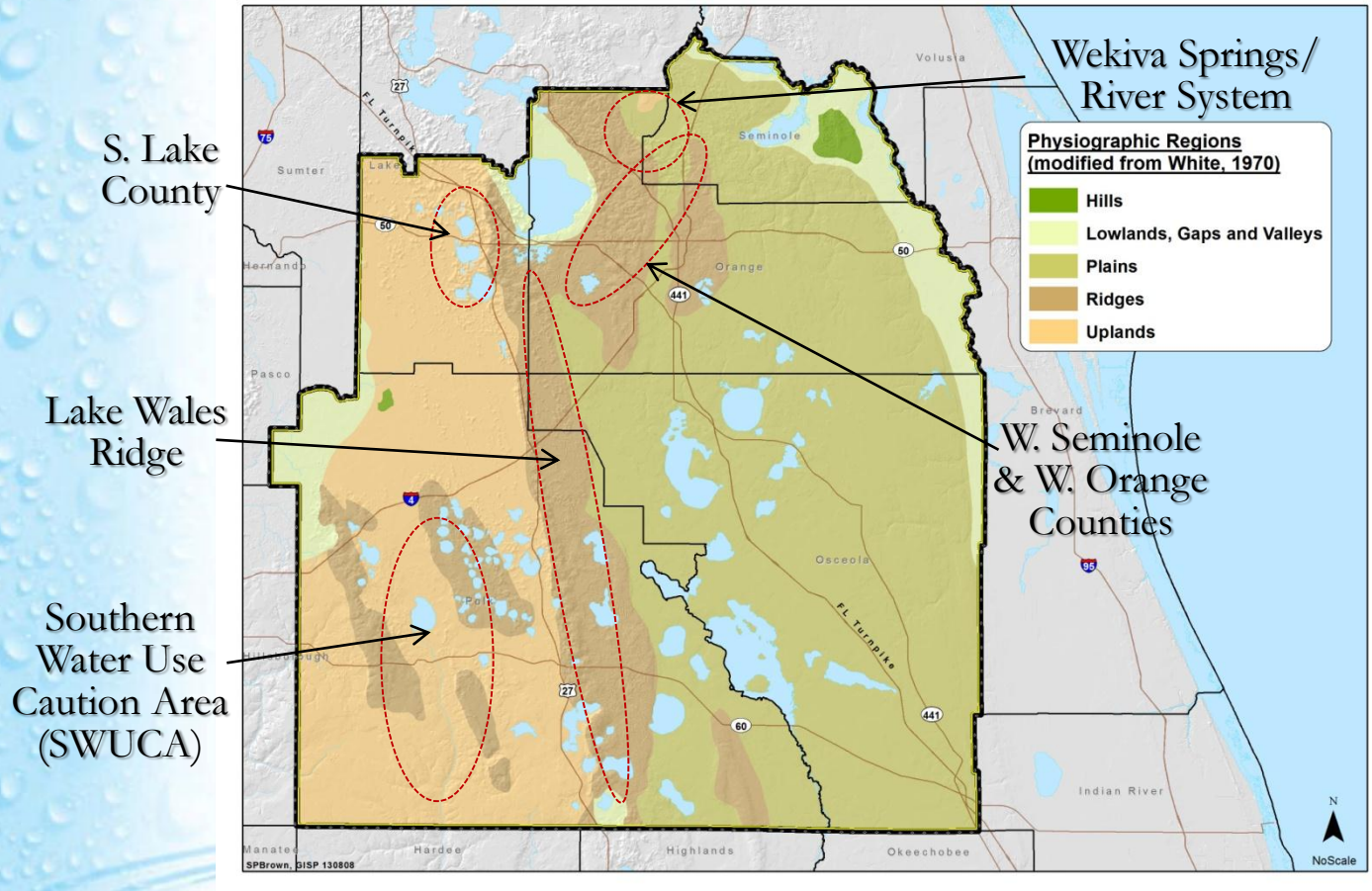
2035

Historic

Projected

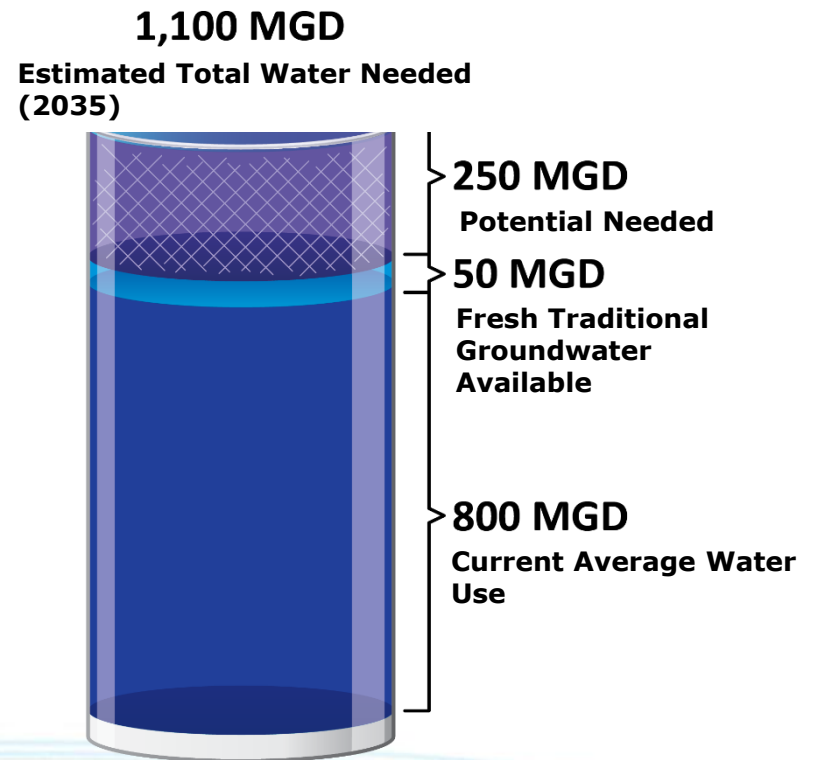


# Primary Areas Susceptible to Groundwater Withdrawals



# The Region's Challenge

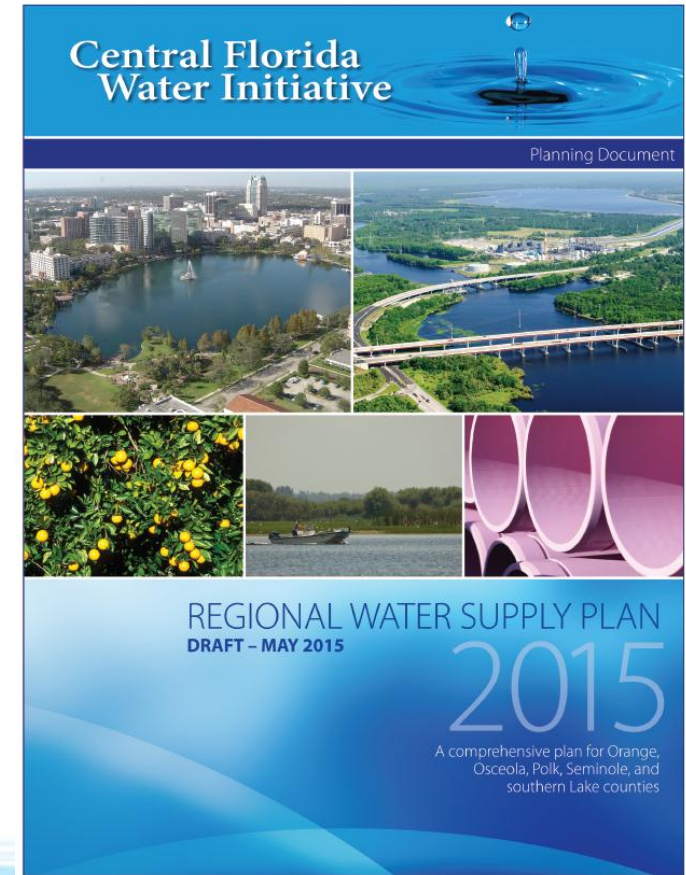
- With population growth in central Florida, the pressures on water supply will only increase.



MGD = million gallons per day

# One RWSP for the CFWI Region

- Collaborative effort
- Scientific foundation
- Stakeholder driven
- Demands from all categories
- Potential sources and projects
- Water resource evaluation
- Funding mechanisms
- Update every 5 years
  - 20-year planning horizon



# Solutions Team

- Subtasks:
  - Review regional alternatives
  - Develop water supply and conservation options
  - Identify partnerships/encourage interconnects
  - Identify need for recovery/prevention
  - Monitoring/Assessment in conjunction with DMIT
  - Workshops and public meetings
  - Identify funding needs for regional projects



# 2035 Water Resources Protection & Water Supply Strategies Plan

## CFWI Solutions Plan

### **Executive Summary**

**Chapter 1:** Introduction

**Chapter 2:** Water Conservation

**Chapter 3:** Solutions Project Options

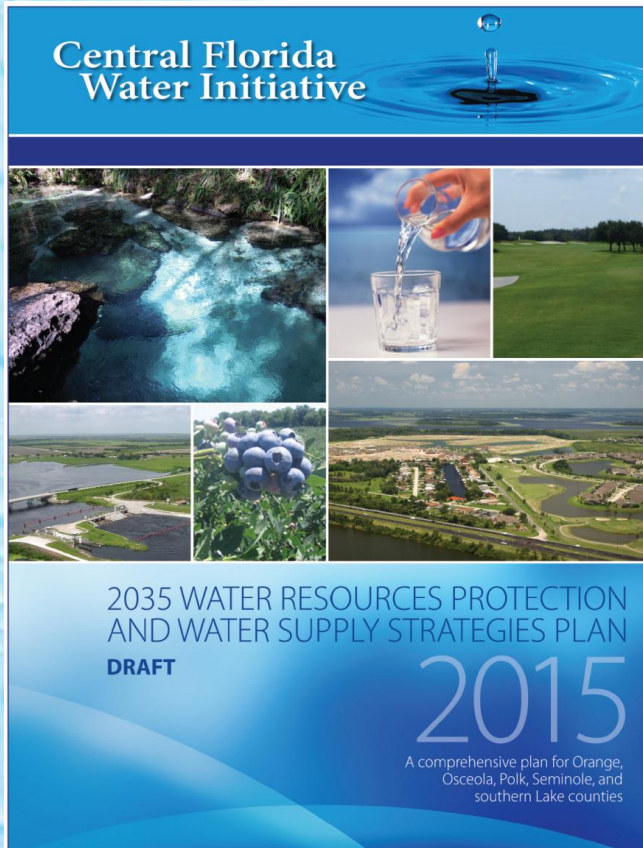
**Chapter 4:** Environmental Evaluation

**Chapter 5:** Regulation

**Chapter 6:** Financial Assessment

**Chapter 7:** Conclusions &  
Implementation Strategies

**Appendices**



# Chapter 2: Water Conservation

## ■ Projects

### ■ Public Supply

- 10 BMPs, \$122M, 27.9 MGD

### ■ Other Self Supply (LRA, DSS, CII, PwGn)

- 8 BMPs, \$17.9M, 4.6 MGD

### ■ Agriculture Programmatic Approach

- 8 BMP Categories, \$10.1M, 4.3 MGD

## ■ Additional

### ■ Public Education

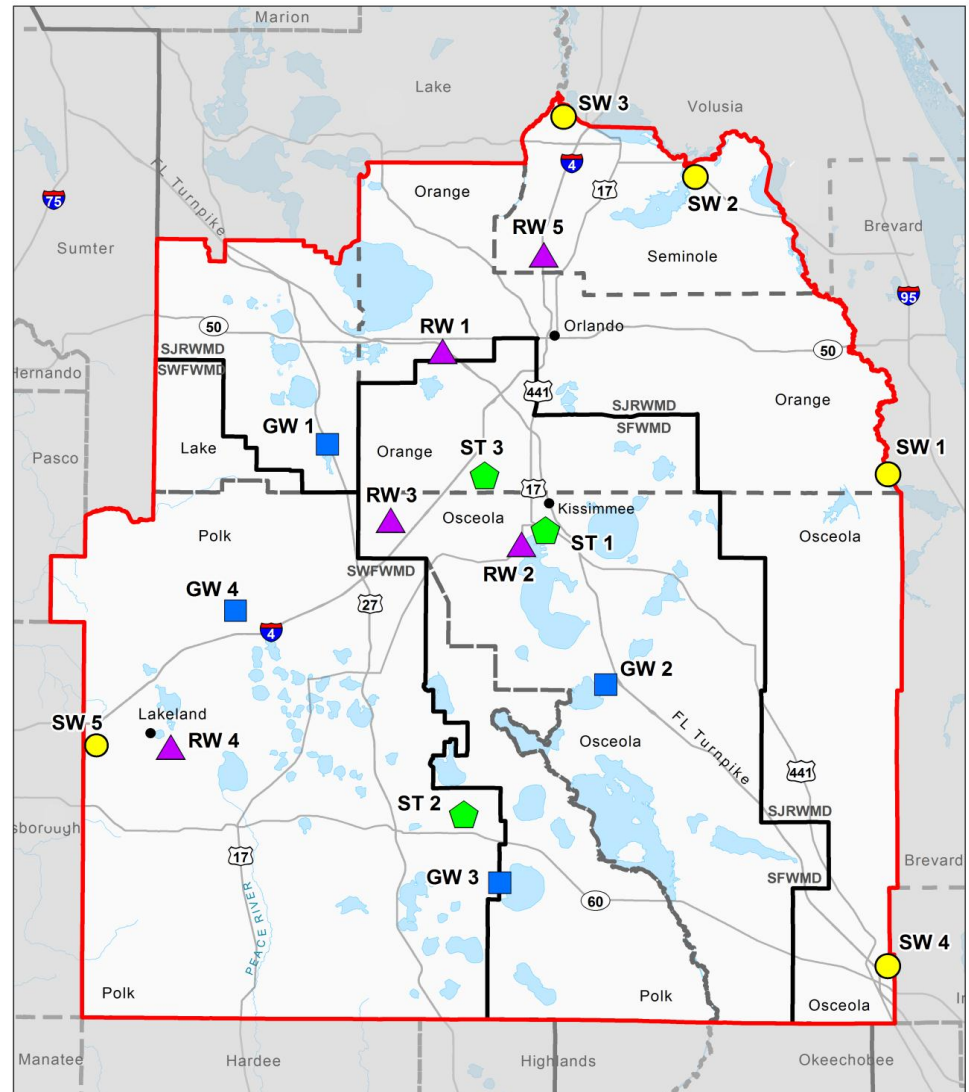
### ■ Statewide Clearinghouse

### ■ Conservation Planning Tools

### ■ Research

## Chapter 3: Solution Plan Projects

- 3 Brackish Groundwater
- 5 Reclaimed Water
- 5 Surface Water
- 3 Stormwater



Approximate Locations of Solutions Planning Phase (SPP) Water Supply Project Options (WSPOs) within the Central Florida Water Initiative (CFWI) Planning Area

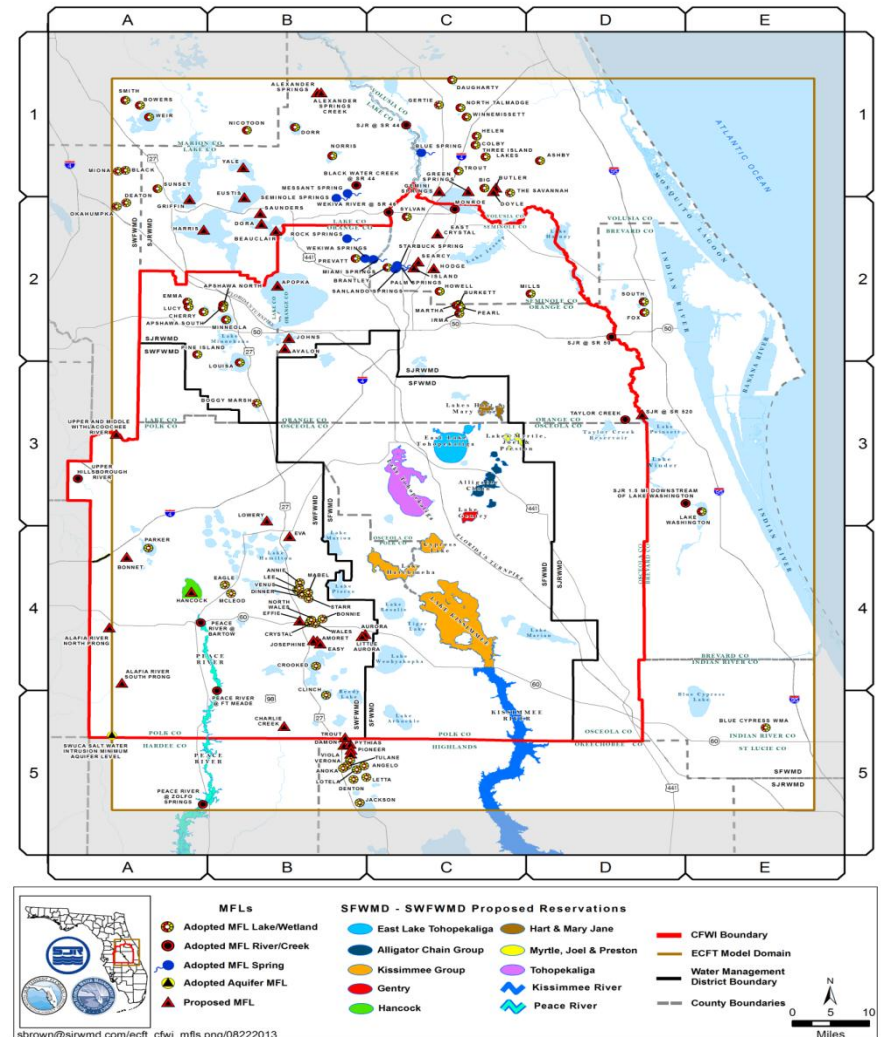
<span style="color: blue;">■</span> Groundwater	<span style="border: 1px solid red; padding: 2px;"> </span> CFWI Boundary
<span style="color: purple;">▲</span> Reclaimed Water	<span style="border: 1px dashed gray; padding: 2px;"> </span> County Boundaries
<span style="color: yellow;">●</span> Surface Water	<span style="border: 1px solid black; padding: 2px;"> </span> Water Management District Boundaries
<span style="color: green;">◆</span> Stormwater	

N

0 5 10  
Miles

# Chapter 4: Solutions Plan Environmental Evaluation

- Develop and assess water supply and water resource development project options for the protection or restoration of water resources.
- Provide technical support to the SPT on potential environmental effects of various project options.



# Chapter 5: Regulation

- Interim Regulatory Measures
  - Permit Conditions and Duration
  - Conservation
- Issues That May Affect Plan Implementation
  - Per Capita
  - Water Shortage
  - Aquifer Recharge and Impact Offsets
  - Resource Redistribution
  - Caution Areas
  - Interdistrict Transfers
  - Public Interest
  - Permitting Thresholds / Domestic Self Supply
  - Conservation
- Regulatory Review of Selected RWSP Projects
- Future Regulatory Structure

## Chapter 6: Financial Assessment/Solutions Projects

Projects	Total Quantity	Year 1 (MIL \$)	Year 2 (MIL \$)	Years 3-5 (MIL \$)	Total Cost (Mil \$)
Conservation (All)	36.8 mgd	3.8	6.1	24.5	170
Recovery Projects		2	1.5	10	50
Data Monitoring & Investigation		3	7.5	23.1	34.1
Other Investigations		1.3	3.3	3.7	8.9
<b>Groundwater Projects</b>					
South Lake County Wellfield	12.7 mgd			60.7	116.5
Cypress Lake Wellfield	30 mgd	14	25.8	153.7	374.3
Southeast Polk County Wellfield (centralized)	30 mgd	2.4	2.6	129.5	284.6
<b>Reclaimed Water Projects</b>					
Project RENEW	9.2 mgd			24.6	50.5
West Ditch Stormwater for Reuse Augmentation	0.9 mgd	1.6	2.3	11	28.2
160-ac Site Indirect Potable Reuse	4.5 mgd	0.6	0.7	6.4	7.7
TECO Polk Power Reuse	10 mgd				97
AFIRST/Altamonte Springs	4.5 mgd				15
<b>Surface Water Projects</b>					
St. Johns River/Taylor Creek Reservoir	54 mgd			10	637.6
St. Johns River near State Road 46	40 mgd				584.3
St. Johns River near Yankee Lake	40 mgd		2	20	536.7
Polk Regional Alafia River Basin	10 mgd				263.4
Grove Land Reservoir and Stormwater Treatment	122.4 mgd raw water	3	3		435.4
<b>Stormwater Projects</b>					
Judge Farms Reservoir and Impoundment	5 mgd	0.5	17.7	6.8	28.3
Lake Wailes Stormwater Mitigation	1.4 mgd		1.2	12.4	13.6
Reedy Creek Watershed	4 mgd				1.6
<b>Total Financial Plan</b>	224.5 mgd	32.2	73.7	496.4	2,775.7
<b>Total Solutions Projects</b>	415.4 mgd				3,737.7

# Chapter 7: Conclusions

- Water conservation is an important element
- Sufficient options to meet the regions' needs through 2035
  - 150 options – more than 340 mgd
- Conceptual management strategies can be developed into specific projects
- Stakeholder engagement has and will continue to be important
- Project cost estimates scenario
  - \$2.8 billion for 225 mgd
- Establishment of consistent rules and regulations to be developed to implement the results of CFWI Planning effort

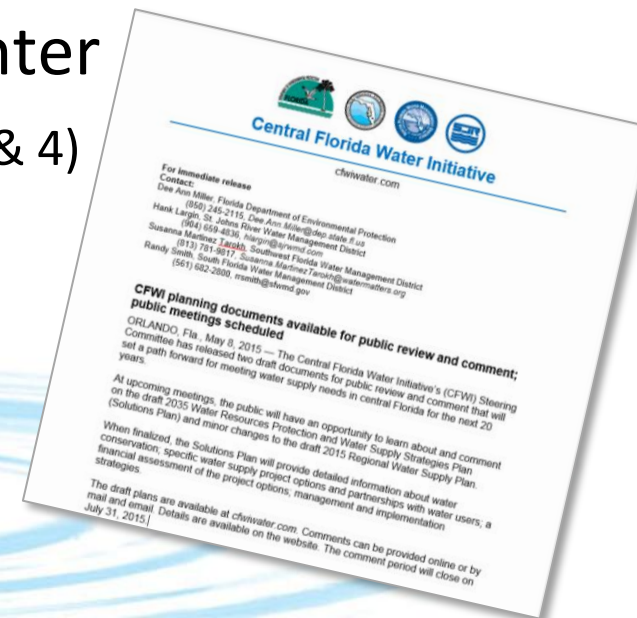
# Chapter 7: Implementation Strategy

- Implement Water Conservation Programs
- Develop Specific Prevention and Recovery Projects
- Support Development and Implementation of Regional Project Solutions
- Support Additional AWS Projects
- Improve Water Resource Assessment Tools and Supporting Data
- Develop Options for Consistent Rules and Regulations
- Continued Communication and Outreach
- Identify Options for Future CFWI Framework to Support Implementation Strategies



# 2015 Outreach Activities

- ✓ • Government/business focus groups
- ✓ • Pre-meetings with environmental, agriculture and business stakeholders
- ✓ • Feedback sessions with environmental, agriculture and business/government stakeholders (May 18, 20, 21)
- Traditional public meetings in Winter Haven and Winter Garden (June 1 & 4)
- Media/speaking engagements (ongoing)



# CFWI Plan Schedule

## May/June/July

- Public review period
  - May 8 – July 31
  - 82 days

## August/September

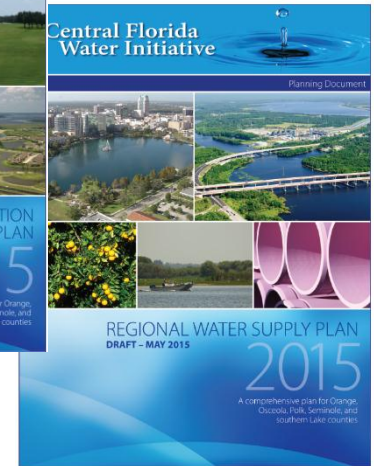
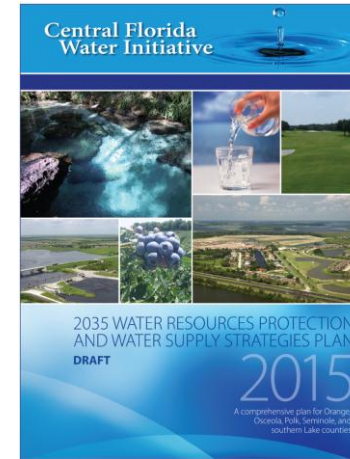
- Finalize CFWI Document Series

## October

- Steering Committee Meeting
  - Final approval of CFWI Document Series

## November

- Present to the 3 WMD's Governing Boards



# How to Submit Comments



The screenshot shows the homepage of the Central Florida Water Initiative website. At the top, the text 'Central Florida Water Initiative' is displayed in white on a blue background, with 'WATER FOR TOMORROW' below it. The main content area features six colored boxes, each with an image and a title: 'The basics of water and CFWI' (green), 'Draft plans for review' (red), 'Meetings and events' (dark green), 'Technical teams' (purple), 'Water conservation' (light green), and 'Other helpful information' (blue). At the bottom of the website, a copyright notice reads '© 2015 Central Florida Water Initiative'.

**Central Florida Water Initiative**  
WATER FOR TOMORROW

**The basics of water and CFWI**  
Learn about where your water comes from today and planning for tomorrow.

**Draft plans for review**  
View central Florida's water supply planning documents and provide comments.

**Meetings and events**  
Find details about public involvement opportunities.

**Technical teams**  
Find information about technical teams, steering committee and technical meetings.

**Water conservation**  
Discover some of the most popular and preferred ways to save water.

**Other helpful information**  
Explore the world of water through related links, publications and videos.

© 2015 Central Florida Water Initiative

[cfwiwater.com](http://cfwiwater.com)

# Central Florida Water Initiative

[Return to  
CFWI Home](#)

WATER FOR TOMORROW

## Water supply planning documents

The work of the Central Florida Water Initiative (CFWI) is captured in a series of documents that include the Regional Water Supply Plan, the Regional Water Supply Plan Appendices, the 2035 Water Resources Protection and Water Supply Strategies Plan, and the 2035 Water Resources Protection and Water Supply Strategies Plan Appendices. The Solutions Planning Team has completed the draft CFWI 2035 Water Resources Protection and Water Supply Strategies document, which is now available for review and comment. To submit comments or view a listing of all upcoming public workshops, please click on the following links.

### **Draft 2035 Water Resources Protection and Water Supply Strategies Plan**

- [Draft 2035 Water Resources Protection and Water Supply Strategies Plan](#)
- [Appendices](#)
- [Click here to submit comments](#)  
(The comment period will close July 31, 2015.)
- [Click here for public workshops](#)

### **Draft Regional Water Supply Plan**

- [Draft Regional Water Supply Plan](#)  
(updated May 8, 2015)
- [Changes since previous version](#)
- [Appendices](#)
- [Click here to submit comments](#)  
(The comment period will close July 31, 2015.)
- [Click here for public workshops](#)

## Central Florida Water Initiative

[Return to  
CFWI Home](#)

WATER FOR TOMORROW

### Submit comments

Comments on the **draft 2035 Water Resources Protection and Water Supply Strategies Plan** can be submitted online, by mail or email. The comment period will close July 31, 2015. Please use the form below to submit comments online. Email or mail comments to:

**Email address:**  
cfwiwater@sfwmd.gov

**Mailing address:**  
South Florida Water Management District  
CFWI Comments  
ATTN: Dean Powell  
Water Supply Bureau  
3301 Gun Club Road  
West Palm Beach, FL 33406

Name \*

Email \*

Confirm email \*

Address \*

City \*

State \*  Zip Code \*

Comments \*

\* **Required.**

\* **Optional.** Address will only be used to determine your water management district to provide more effective communications.

## Central Florida Water Initiative

WATER FOR TOMORROW



### The basics of water and CFWI

Learn about where your water comes from today and planning for tomorrow.



### Draft plans for review

View central Florida's water supply planning documents and provide comments.



### Meetings and events

Find details about public involvement opportunities.



### Technical teams

Find information about technical teams, steering committee and technical meetings.



### Water conservation

Discover some of the most popular and preferred ways to save water.



### Other helpful information

Explore the world of water through related links, publications and videos.

© 2015 Central Florida Water Initiative

Additional information can be found at  
***[cfwiwater.com](http://cfwiwater.com)***