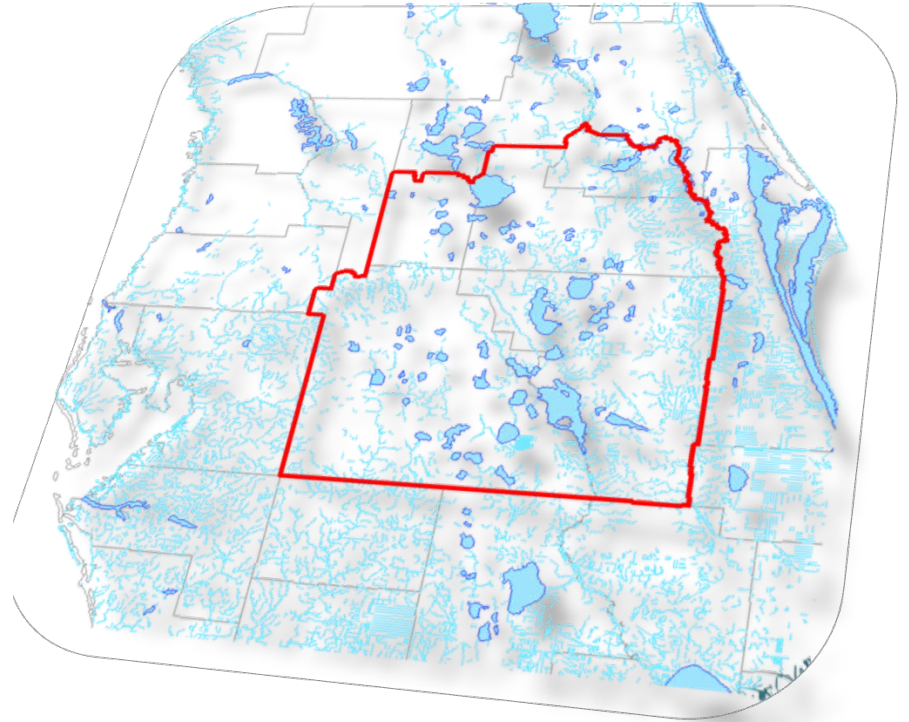


# Future Minimum Flows & Levels

**Mark Hammond**  
**SWFWMD**

**Joanne Chamberlain**  
**SJRWMD**

**CFWI Steering Committee**  
**12/19/2014**



## **SWFWMD MFLs/Reservation Scheduled for 2015 in the CFWI Area**

### **New Proposed MFLs/Reservation for 2015**

- Lake Hancock in Polk County – adoption of MFLs and reservation proposed for April 2015

### **MFLs Proposed for Reevaluation in 2015**

- Lakes Clinch, Crooked, Eagle, McLeod, Starr and Wales in Polk County – reevaluation of MFLs proposed for November/December 2015

**SJFWMD MFLs  
Scheduled for 2015 in or near the CFWI Area**

**New Proposed MFLs for 2015 in CFWI Area**

- St Johns River at SR520 (Lake Poinsett)
  - Located on the CFWI eastern boundary
  - Rule making planned to begin in summer 2015
- Lake Apopka
  - Rule making planned to begin in late 2015

**New Proposed MFLs for 2015 within EFCT  
Model Domain**

- Lakes Beauclair, Dora, Eustis, Griffin and Harris
  - Initiate rulemaking in late 2015