

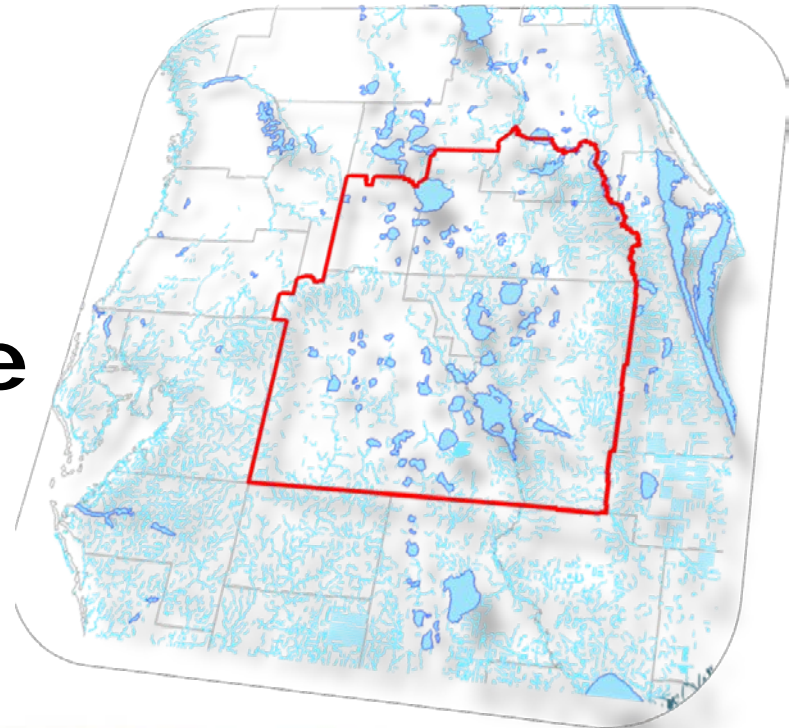
# Surface Water Sub-Team Project Evaluation Progress

## Steering Committee

Joanne Chamberlain, P.E.

Sub Team Leader

**November 14, 2014**



# Surface Water Sub-team Project Evaluations

Project ID	County	CFWI Sub-Regions	Project Name	Est. Finished Water Generated (AADF mgd)
126	Orange	SJRWMD/ SFWMD	St. Johns River/TCR	54
129	Osceola	SFWMD	Kissimmee River Basin AWS Project	0 - 25
135	Seminole	SJRWMD	St. Johns River Near SR 46	40
138	Seminole	SJRWMD	St. Johns River Near Yankee Lake PHASE II	40
144	Okeechobee / Indian River	SFWMD / SJRWMD	C-25 Groveland Reservoir & STA	122 *
150	Polk, Hillsborough	SWFWMD	Joint Tampa Bay Water / Polk County AWS	10

\* 122 mgd is not finished water





## 135. St. Johns River Near State Road 46 Project

Potable and Reuse Augmentation AWS – 40 mgd

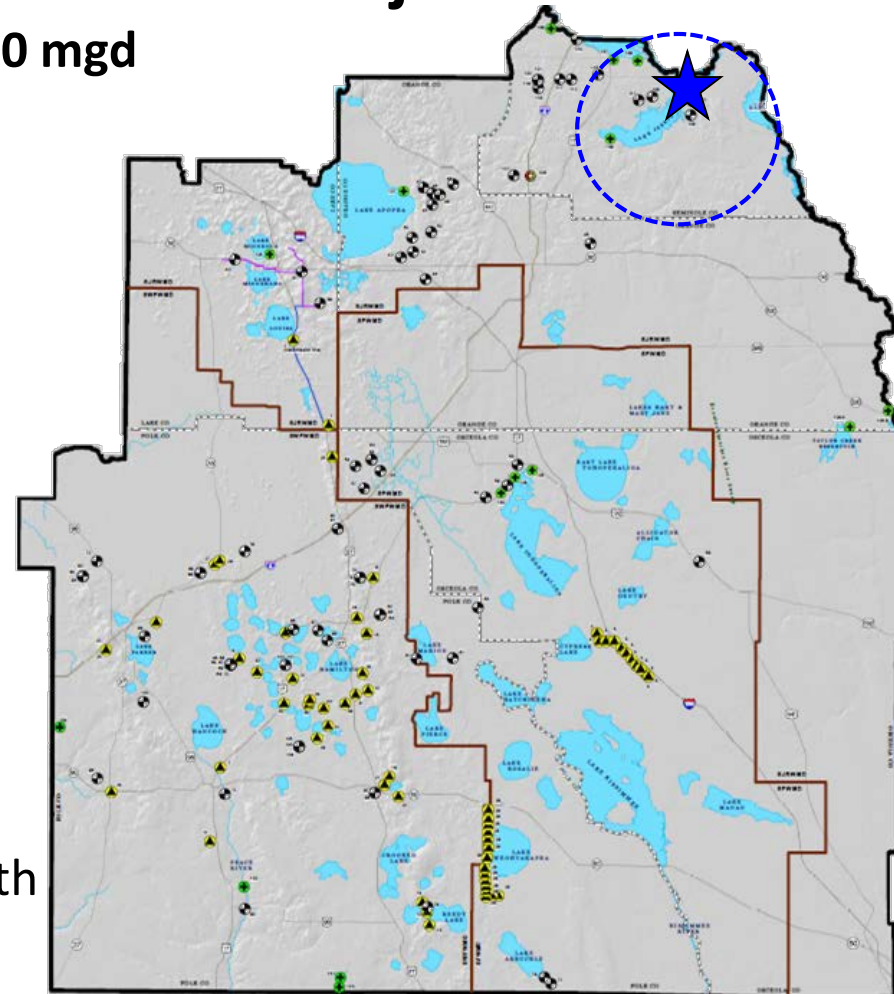
**Purpose:** Managed withdrawal of surface water from the St. Johns River for potable consumption and potential augmentation of reclaimed water systems to meet 2035 demands.

### Cost Estimates:

- ❖ Total capital: \$584.3 M
- ❖ Annual O&M: \$18.6 M / yr
- ❖ Total annualized costs: \$48.9 M / yr
- ❖ Unit production: \$4.68 / 1,000 gals

**Water Resource Constraints:** Compliance with existing or future adopted MFLs

**Partners & Governance:** On hold since 2011 – Previous partners would include Altamonte Springs, Casselberry, Maitland, Orange County, Oviedo, Sanford and Winter Springs.



## 138.a St. Johns River Near Yankee Lake Project

Potable AWS – 40 mgd

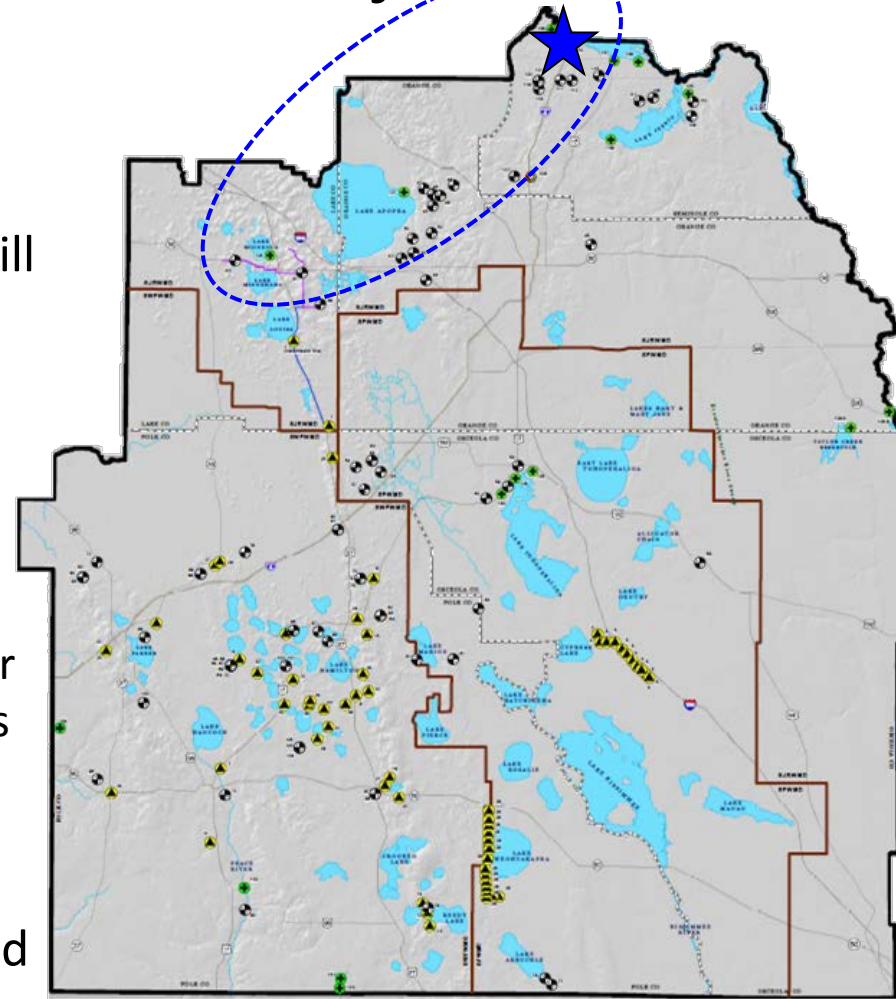
**Purpose:** Managed withdrawal of surface water from the St. Johns River to meet 2035 public water supply demands. The project will produce potable water for various entities within the CFWI region.

### Cost Estimates:

- ❖ Total capital: \$536.6 - \$565.8 M
- ❖ Annual O&M: \$18.2 - \$18.3 M / yr
- ❖ Total annualized costs: \$46.3 - \$47.8 M / yr
- ❖ Unit production: \$3.96 - \$4.01 / 1,000 gals

**Water Resource Constraints:** Compliance with existing or future adopted MFLs

**Partners & Governance:** Project partners and agreements would need to be developed. For planning purposes potential partners were identified by comparing potable water demands from the RWSP to various permittee's groundwater allocations.







## 144. C-25 Grove Land Reservoir & STA Project

Water Storage / River Augmentation – 122.4 mgd

**Purpose:** Project is expected to provide a variety of benefits to water utilities, landowners and government, some of which include surface water augmentation, groundwater recharge, and nutrient reduction.

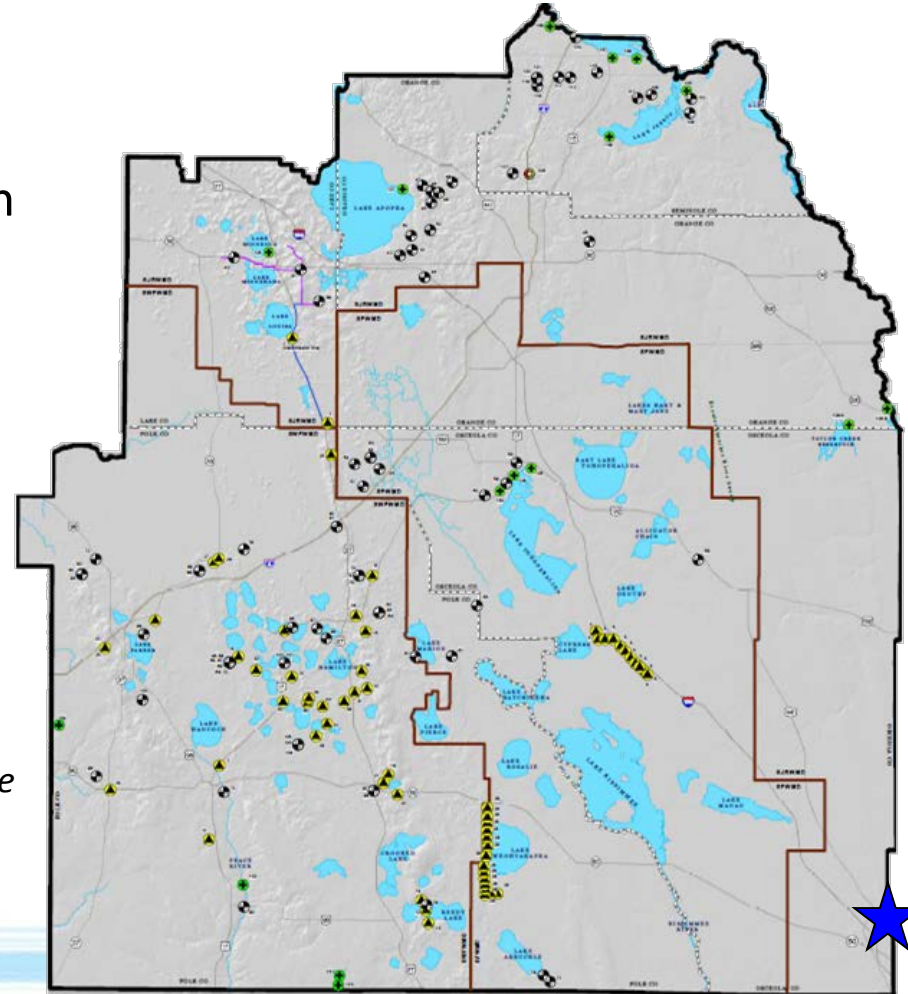
**Cost Estimates:** *not from CE Tool*

- ❖ Total capital: \$435.4 M
- ❖ Annual O&M: \$2.7 M / yr
- ❖ Total annualized costs: \$21.2 M / yr
- ❖ Unit production : \$0.48 / 1,000 gals

*Does not include transmission or treatment to potable*

**Water Resource Constraints:** Need to meet nutrient criteria for discharges in to SJR

**Partners & Governance:** Project partners and agreements would need to be developed.





## 150. Joint Tampa Bay Water / Polk County Project

Potable Augmentation AWS – 10 mgd

**Purpose:** Interconnect to supply 10 mgd of potable AWS for utilities within Polk County from Tampa Bay Water for 2035 and beyond (at potentially two locations). Further work needed to develop the financial, technical, regulatory, and environmental feasibility of a potential project(s) that can be identified as having a joint benefit.

**Cost Estimates:** CE tool estimate in progress

**Water Resource Constraints:** Under evaluation

**Partners & Governance:** Interlocal / User Agreement between Tampa Bay Water and Polk County / Polk County regional water supply entity.

