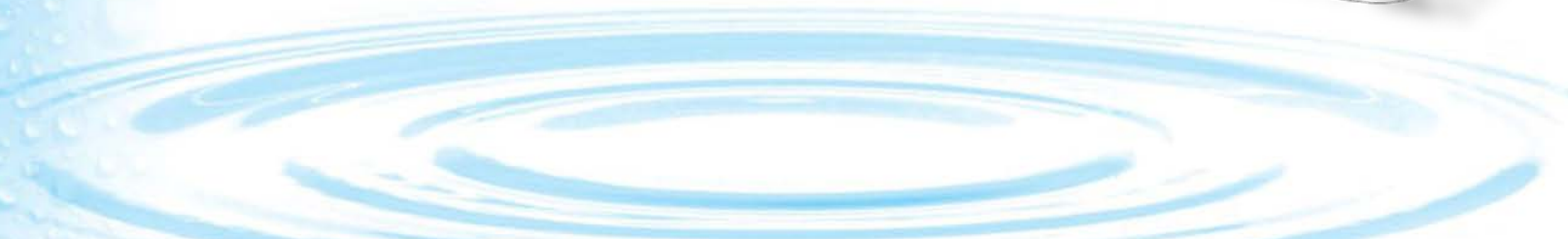
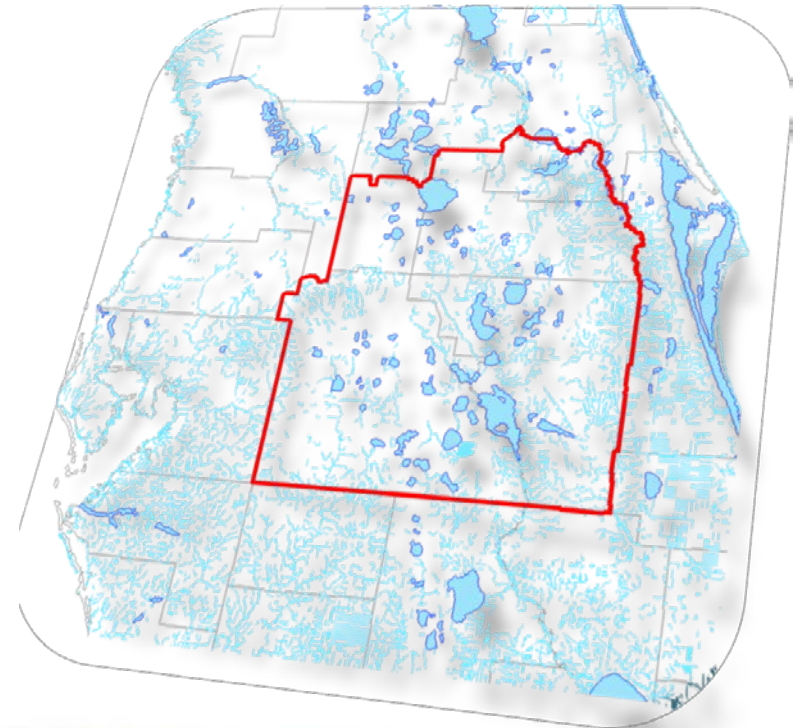


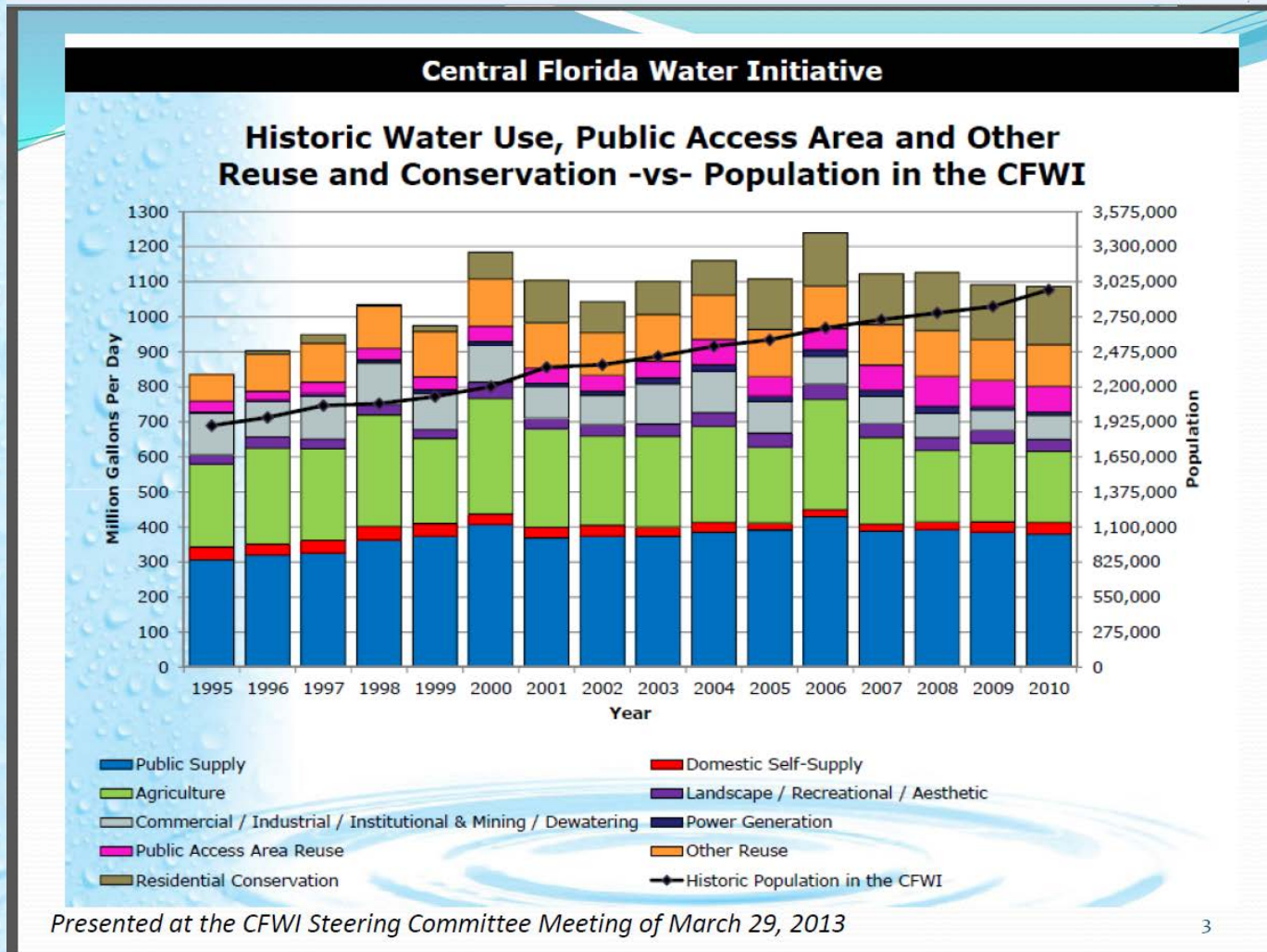
**CFWI Regional Water Supply Plan  
Historic Water Use  
1995-2012 update**

**Steering Committee**

**October 24, 2014**

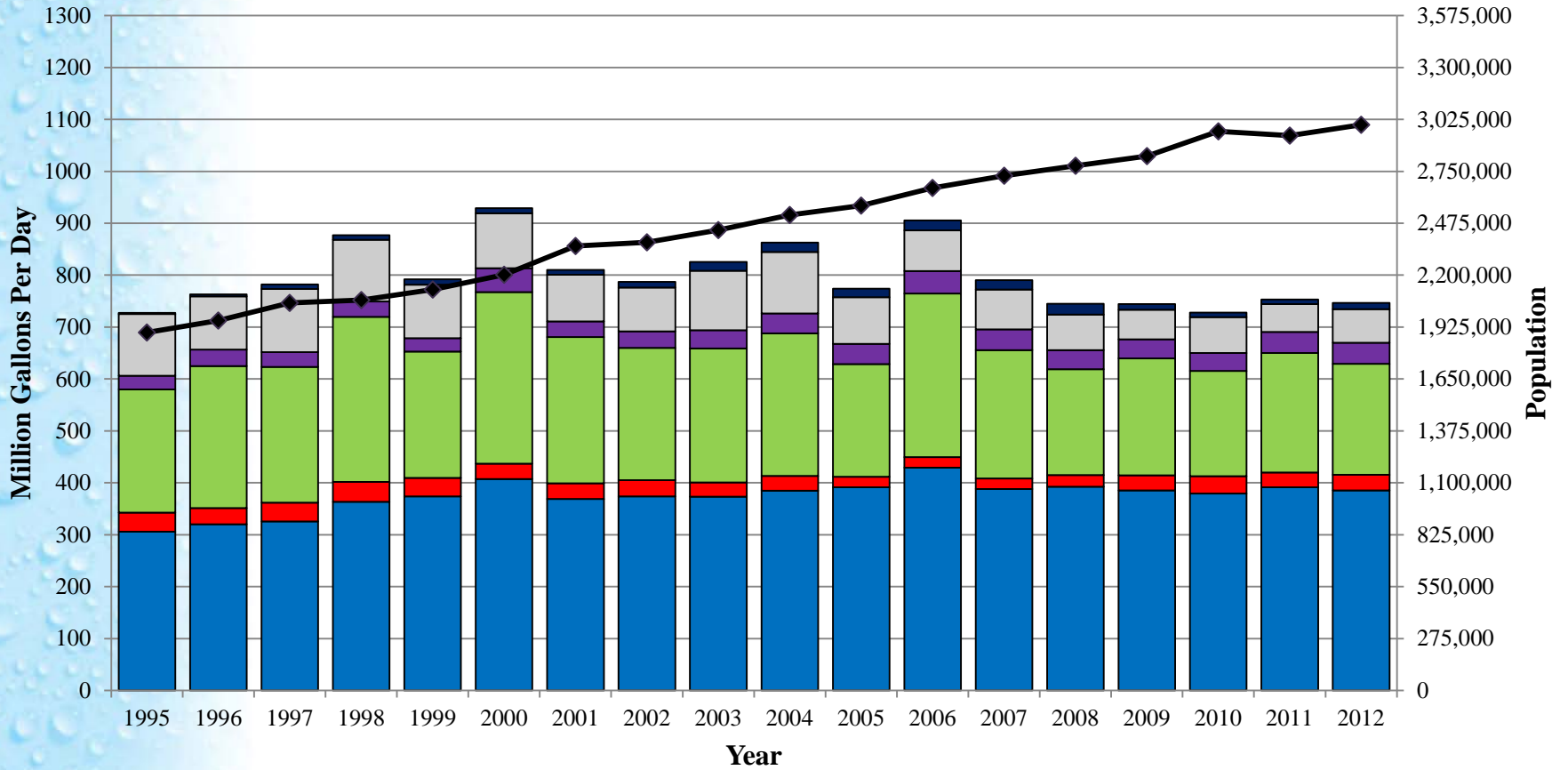


# Update Historic Water Use



# Central Florida Water Initiative

## Historic Water Use -vs- Population in the CFWI



Public Supply

Agriculture

Commercial / Industrial / Institutional & Mining / Dewatering

Historic Population in the CFWI

Domestic Self-Supply

Landscape / Recreational / Aesthetic

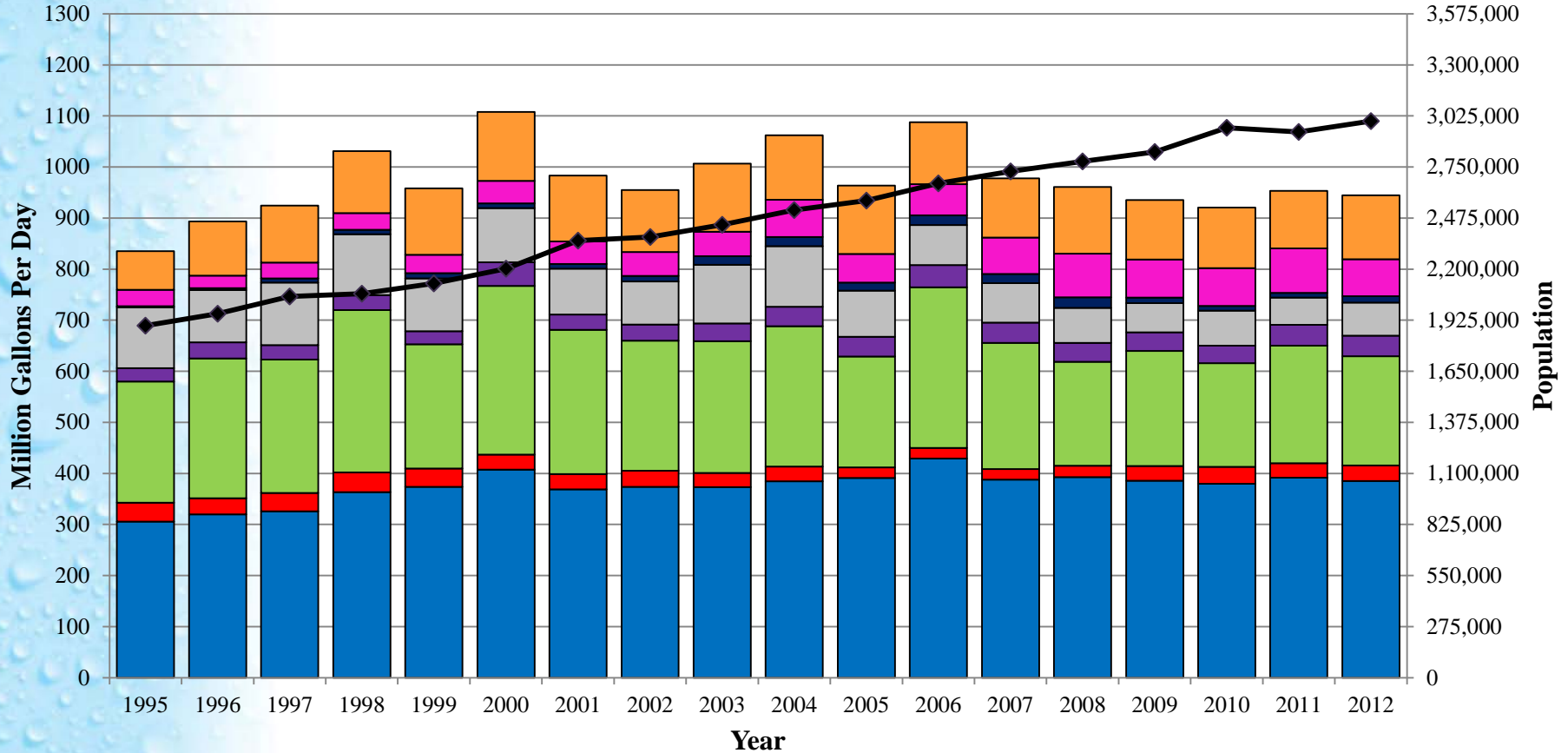
Power Generation

# Reuse

- 1995 Public Access Area Reuse = 32.05 mgd
- 2012 Public Access Area Reuse = 72.44 mgd
  - Increase of 40.39 mgd
    - Residential Irrigation increased by 30.75 mgd
  
- 1995 Other Reuse = 75.46 mgd
- 2012 Other Reuse = 125.29 mgd
  - Increase of 49.84 mgd

# Central Florida Water Initiative

## Historic Water Use -vs- Population in the CFWI plus - Public Access Area and Other Reuse



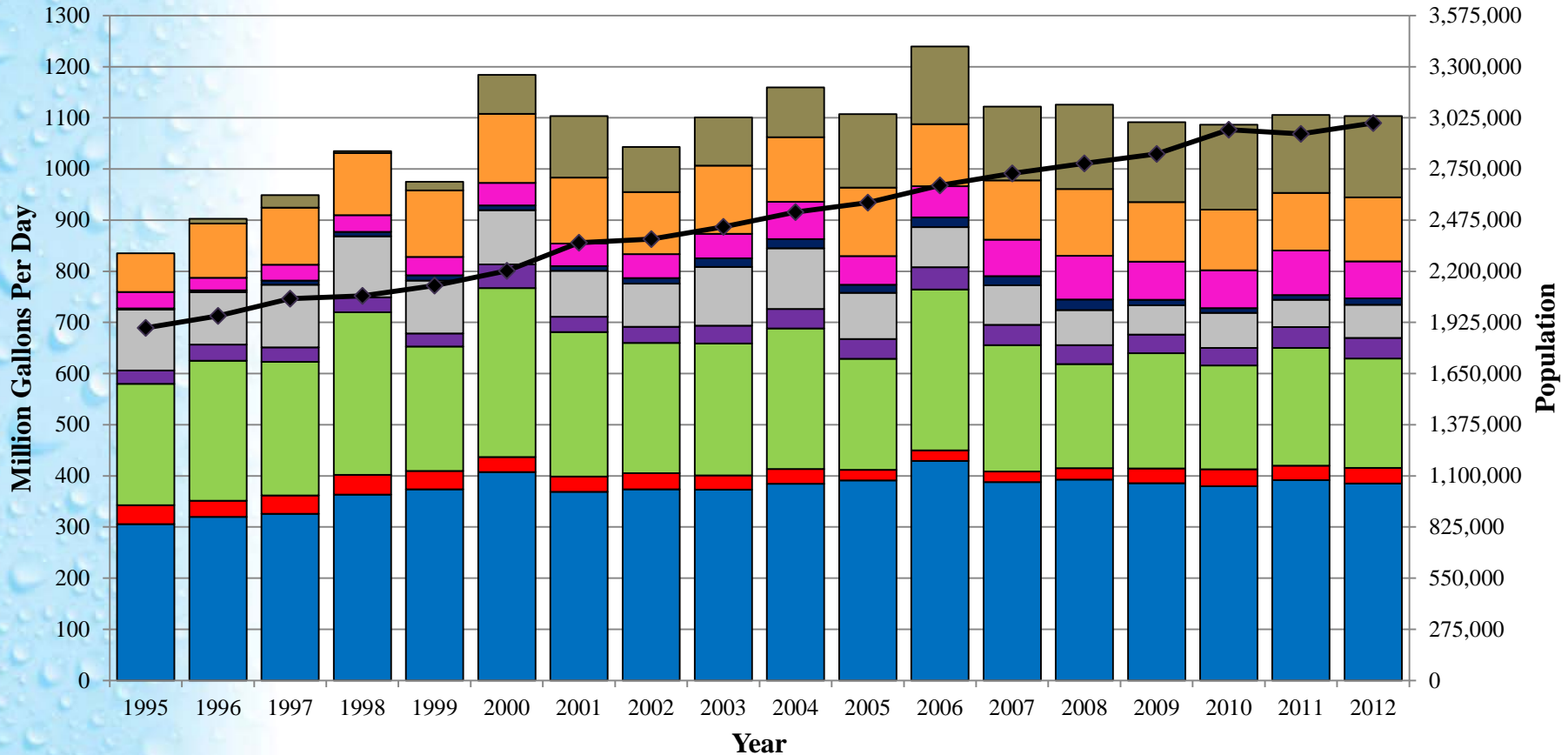
- Public Supply
- Domestic Self-Supply
- Agriculture
- Landscape / Recreational / Aesthetic
- Commercial / Industrial / Institutional & Mining / Dewatering
- Power Generation
- Public Access Area Reuse
- Other Reuse
- ◆ Historic Population in the CFWI

# Residential Conservation

- Calculated for residential public supply
- Took into account offset for residential irrigation reuse
- Estimated water saved through conservation from 1995 – 2012 = 159.15 mgd

# Central Florida Water Initiative

## Historic Water Use -vs- Population in the CFWI plus - Public Access Area, Other Reuse and Residential Conservation



- Public Supply
- Domestic Self-Supply
- Agriculture
- Landscape / Recreational / Aesthetic
- Commercial / Industrial / Institutional & Mining / Dewatering
- Power Generation
- Public Access Area Reuse
- Other Reuse
- Residential Conservation
- ◆ Historic Population in the CFWI

# QUESTIONS

