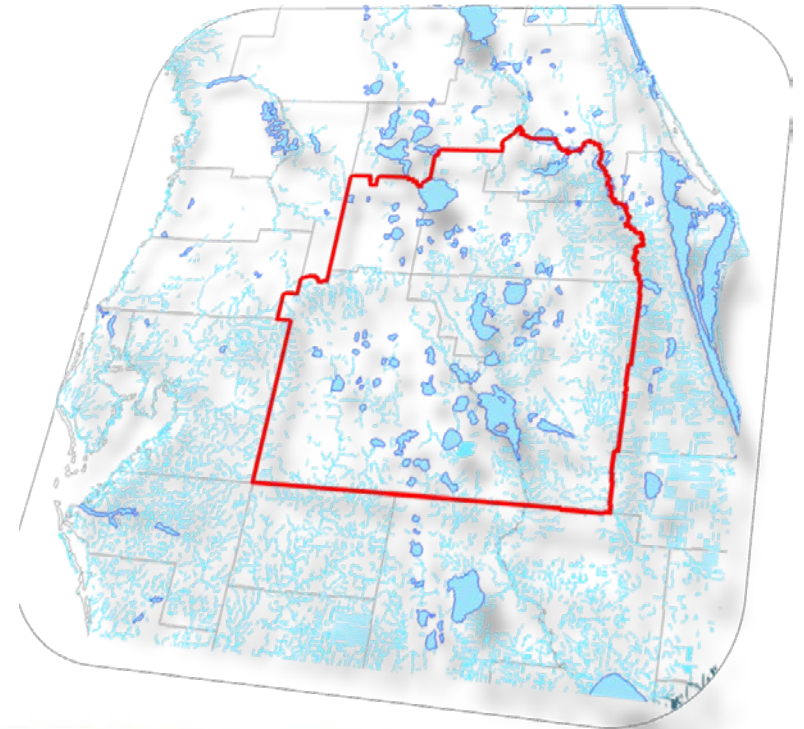


Groundwater Sub-Team Update

**Steering Committee
October 24, 2014**

Presented by: Jerry Mallams



Groundwater Sub-team Project Evaluations

Project	Supply (mgd)
South Lake Wellfield	12.7
Cypress Lake Wellfield	20.5*
SE Polk Co Wellfield	30
Polk Co. Distributed Wellfield	9.8

*Total Project is 30 mgd.

Groundwater Sub-team Project Considerations

- Groundwater Projects are above the 850 mgd of Total Water Use
- Groundwater Projects may require associated Recovery/Prevention project(s)
- Constraints were identified using the CFWI Groundwater Modeling Tool
- Cypress Lake and SE Polk wellfields have Water Use Permits

South Lake Wellfield Project

Potable AWS Project – 12.7 mgd

Purpose: Produce 12.7 mgd of potable AWS for the South Lake entities. Meet 2035 demands.

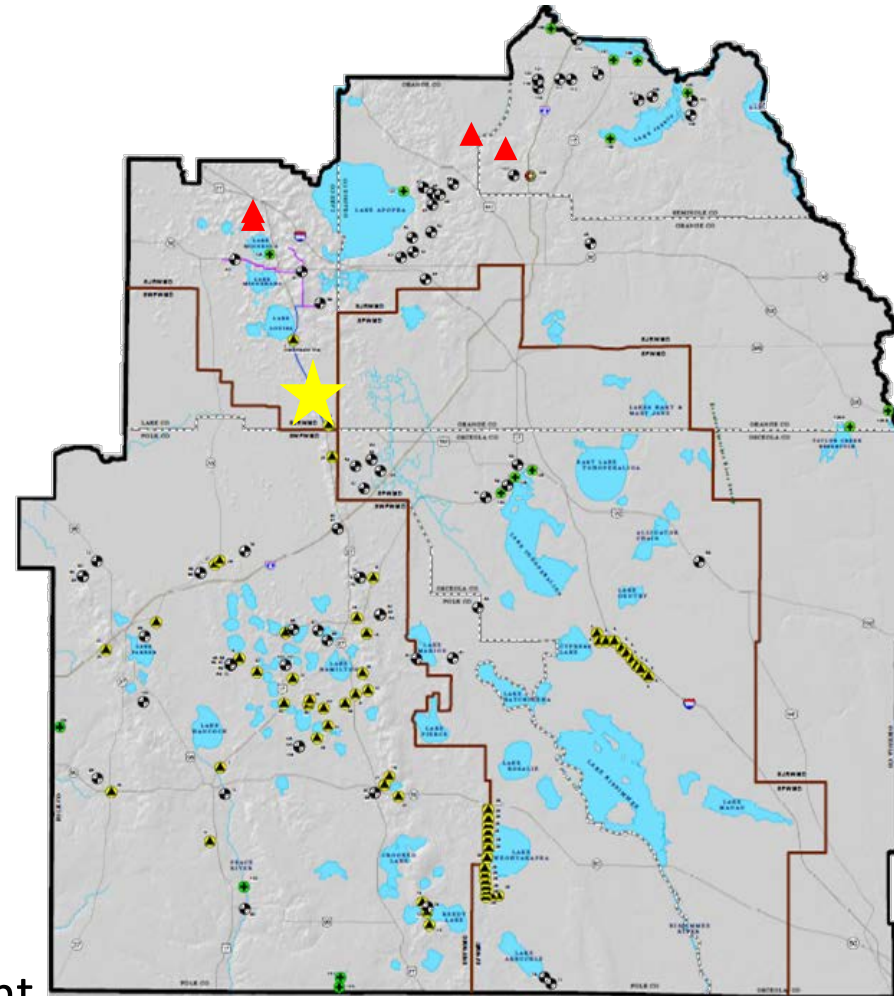
Cost Estimates:

- ❖ Total capital: \$121,000,000
- ❖ Unit production cost: \$3.39/1,000 gallons

Water Resource Constraints:

Water Body	Freeboard Impact
North Lake Apshawa	-0.3 ft
South Lake Apshawa	-0.3 ft
Starbuck Spring	-0.1 cfs
Wekiwa Springs	-0.2 cfs

Partners & Governance: Interlocal Agreement between Lake County, Clermont, Groveland, Mascotte, Minneola, Montverde, & LUSI



Cypress Lake Wellfield Project

Potable AWS Project – 20.5 mgd

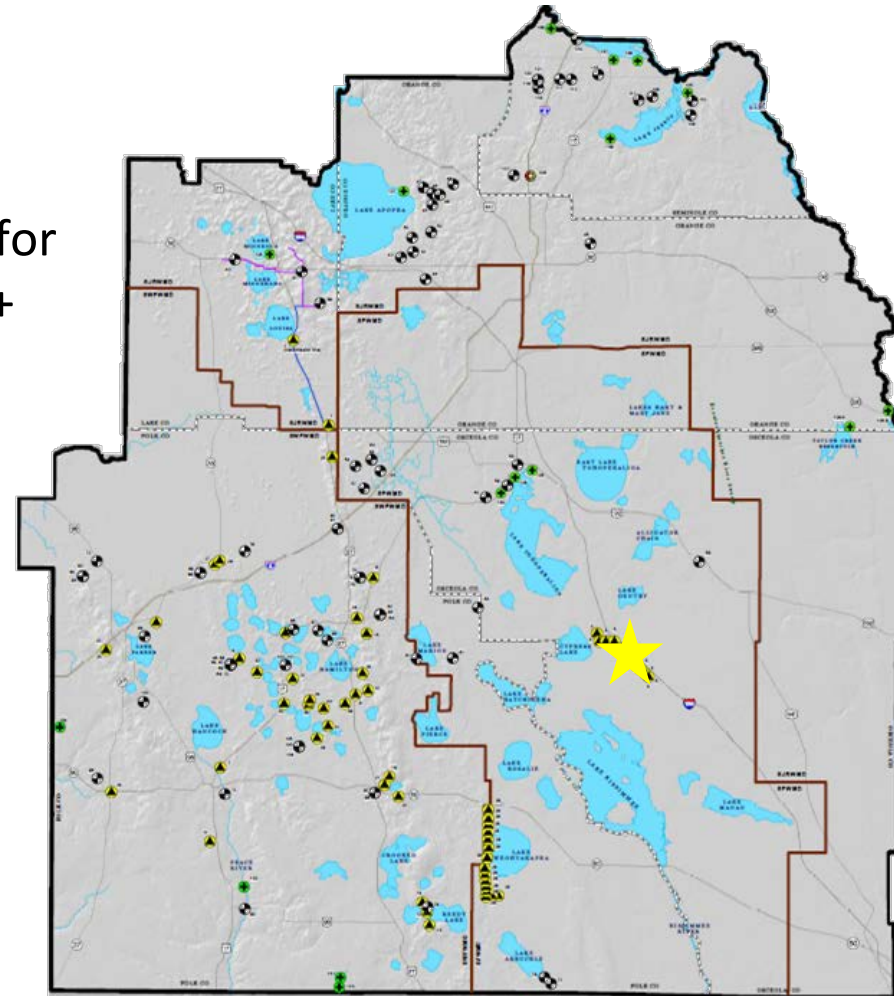
Purpose: Produce 20.5 mgd of potable AWS for the STOPR utilities. Meet base load for 2035+ demands.

Cost Estimates:

- ❖ Total capital: \$253,248,208
- ❖ Unit production cost: \$2.76/1,000 gallons

Water Resource Constraints: Existing Water Use Permit

Partners & Governance: St. Cloud, Toho, Orange County, Polk County, Reedy Creek Improvement District



SE Polk Lower Floridan Wellfield Project

Potable AWS Project – 30 mgd

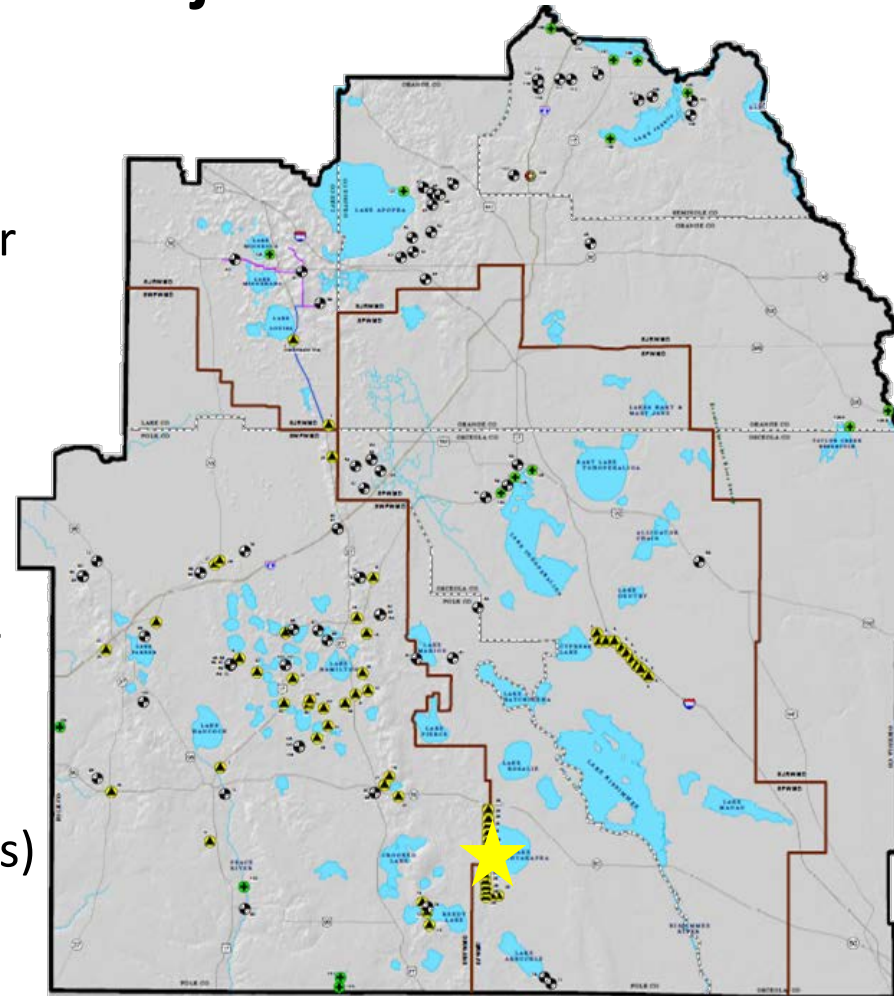
Purpose: Produce 30 mgd of potable AWS for the Polk County utilities. Meet base load for 2035+ demands.

Cost Estimates:

- ❖ Total capital: \$359,001,601
- ❖ Unit production cost: \$2.59/1,000 gallons

Water Resource Constraints: Existing Water Use Permit

Partners & Governance: 13 Project Partners (including 3 different Polk utility service areas)



Polk Co. Distributed Wellfield Project

Potable Water Supply Project – 9.8 mgd

Purpose: Produce 9.8 mgd of potable supply for the Polk County utilities.

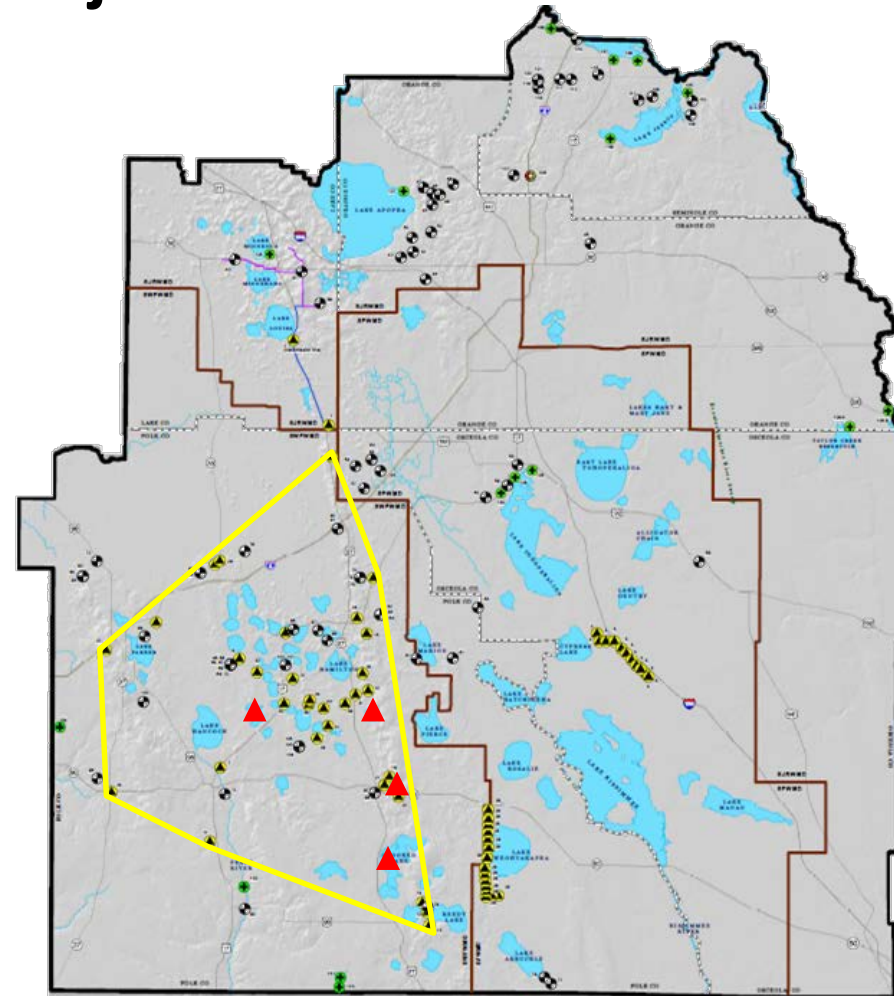
Cost Estimates:

- ❖ Total capital: \$38,800,000
- ❖ Unit production cost: \$0.80/1,000 gallons

Water Resource Constraints:

Water Body	Freeboard Impact
Lake Wales	-0.3 ft
Annie/Starr	-0.3 ft
Eagle Lake	-0.2 ft
Cooked Lake	-0.3 ft

Partners & Governance: 13 Project Partners (including 3 different Polk utility service areas)



Questions?

