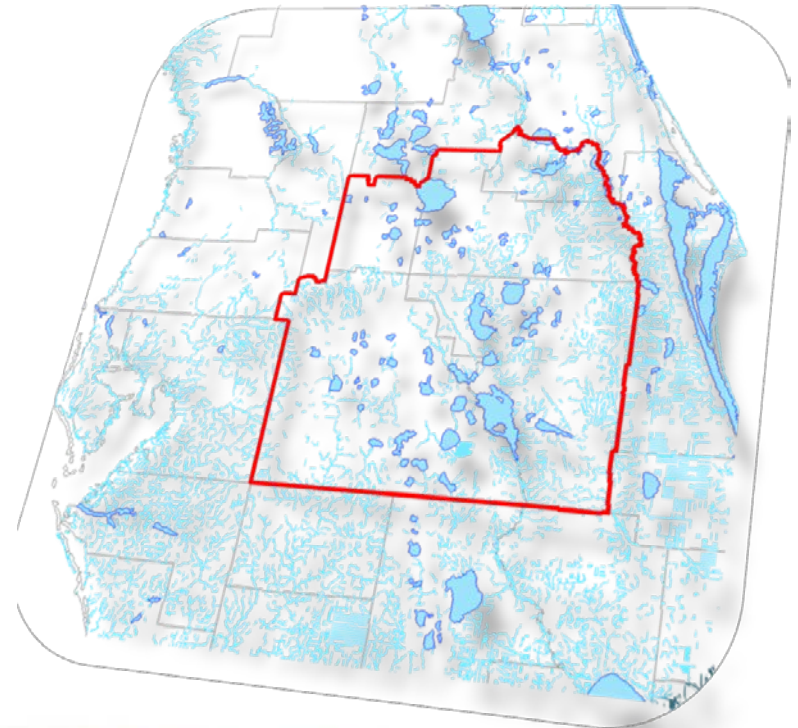


Solutions Planning Team

August 29, 2014

- **Sub-teams Work Progress**
- **Critical Path**

Robert Beltran
Team Leader



CFWI Water Supply Summary

Gross total water needs by 2035	1083 MGD	Draft RWSP for all water uses
Demand Management	42 MGD	Water conservation per draft RWSP
Net Total water needs by 2035	1041 MGD	Draft RWSP for all water uses
Sustainable level of groundwater use	850 MGD	By CFWI Steering Committee
Potential additional groundwater available	75 MGD	Solutions Planning Team to address
Alternative water supply needs	116 MGD	Minimum AWS need; Solutions Planning Team to address
Current permitted water use	1050 MGD	See FDEP Interim Guidance memo (12/13/2013)

Water Supply Project Options

County	Reclaimed Water	Brackish Water	Surface Water	Management Strategies	Total
Orange	69	10	47	0	126
Osceola	34	17	4 - 29	0	55 - 80
Polk	30	18 - 48	15	6	69 - 99
Lake (southern)	7	0	5	0	12
Seminole	25	0	92	0	117
Total	165	45 - 75	163 - 188	6	379 - 434

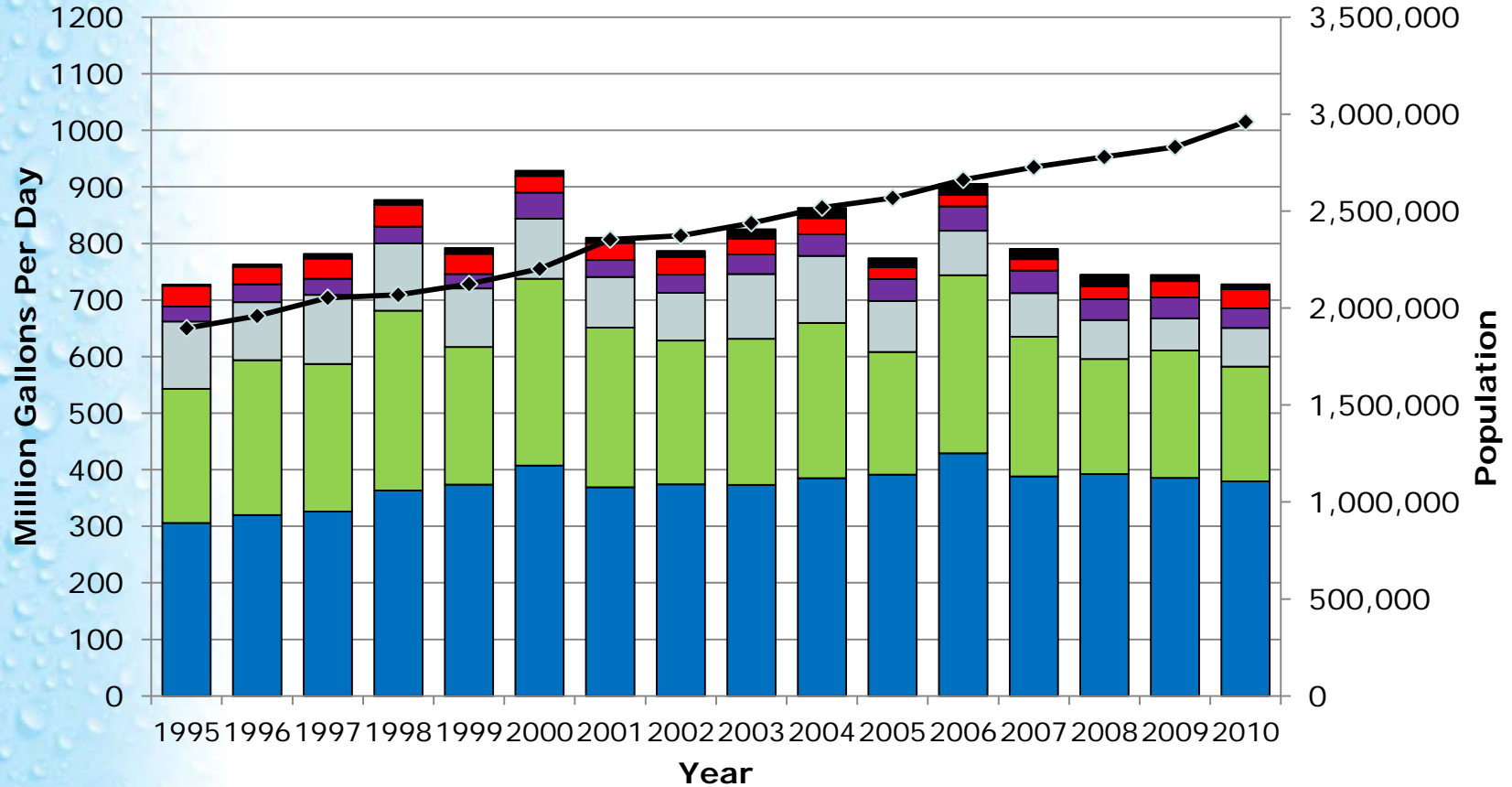
Million gallons per day

DRAFT Project Summary

Sub-Team	# of Projects	Total Potential MGD for all Projects	Total Capital Cost (Mil)
Conservation			
• Public Supply BMPs	11	27.7	\$138
• Agriculture BMPs	8	11	TBD
• Other (DSS, CII, Rec, PG)	TBD	4.6	TBD
Groundwater	3	63.2	\$730
Reclaimed Water	4	25.7	\$168
Stormwater	4	18.4	\$55
Surface Water	5	193.7	\$1,572
Environmental Evaluation	N/A	N/A	N/A
Total		344.3	\$2,663

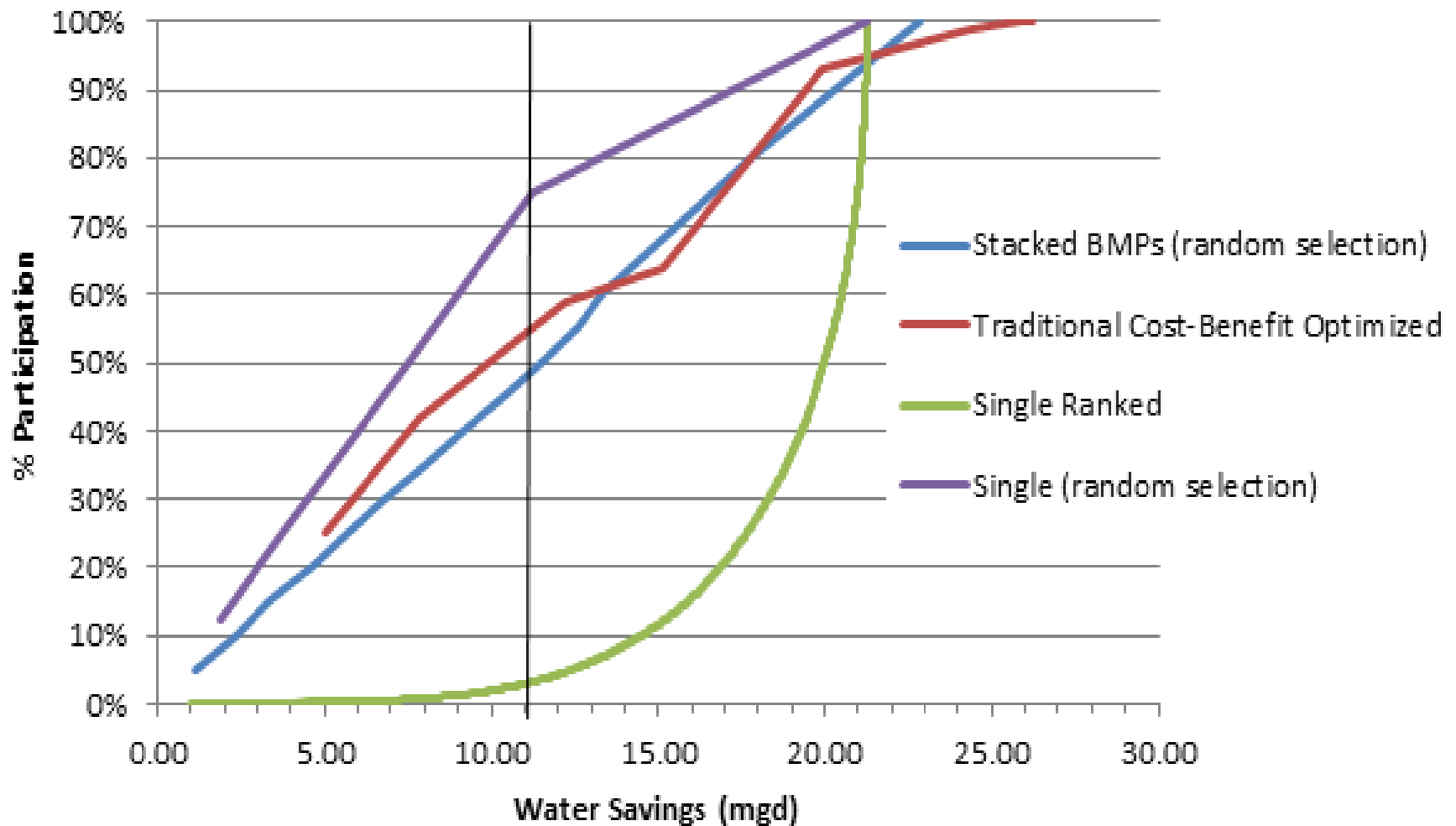
Central Florida Water Initiative

Historic Water Use vs. Population in the CFWI



- Power Generation
- Domestic Self-Supply
- Landscape / Recreational / Aesthetic
- Commercial / Industrial / Institutional & Mining / Dewatering
- Agriculture
- Public Supply

CFWI Ag Water Conservation



Critical Path



Critical Path

- **Aug 21** – SPT - Solutions Team regional project discussion
- **Aug 21** – SPT - Groundwater model scenario discussion
- **Aug 29** – SC - Overview of schedule/critical path

Critical Path

- **Sept 26** – SC - Draft Solutions Team regional projects and groundwater model scenario
- **Sept 30** – All CFWI Plan chapters due to Production Team
- **Oct 24** – SC – Final draft Solution Team regional projects
- **Oct 24** – SPT – Refined Groundwater model scenario presentation and Environmental Sub-team report

Critical Path

- **Nov 4** – SPT – Review CFWI Plan
- **Nov 14** – All CFWI Plan comments due to Production Team
- **Nov 20** – SC – Receive Draft CFWI Plan and high-level presentation on plan
- **Nov 21** – **Central Florida Regional Leadership Forum**
- **Dec 19** – SC – Approve Draft CFWI Plan for public review period
- **Jan/Feb 2015** – Public Review period
- **April 2015** – SC – Approve CFWI Plan and RWSP
- **May 2015** – Gov Bd – Approve CFWI Plan and RWSP

Critical Path (adjusted)

- **Sept 26** – SC - Draft Solutions Team regional projects and groundwater model scenario
- **Oct 24** – SC – Refined draft Solution Team regional projects, Groundwater model scenario and Environmental Sub-team report
- **Oct 31** – All CFWI Plan chapters due to Production Team

Critical Path (adjusted)

- **Nov 20** – SC – Final draft Solutions Team regional projects
- Nov 21 - **Central Florida Regional Leadership Forum**
- **Dec 2** – SPT – Review CFWI Plan
- **Dec 12** – All CFWI Plan comments due to Production Team
- **Dec 19** – SC – Receive Draft CFWI Plan
- **Jan/Feb** – SC – Approve Draft CFWI Plan for public review period
- March/April 2015 – Public Review period
- **May/June 2015** – SC – Approve CFWI Plan and RWSP
- **June/July 2015** – Gov Bd – Approve CFWI Plan and RWSP