

# Current Water Use

Solutions Planning Team and  
Regulatory Team

May 21, 2014

# Assessment of “Current” Water Use in the RWSP and ECFT Model

<b>RWSP Historical Use (1995 to 2010)</b>	<b>ECFT Model (1995 to 2006)</b>
<b>800 mgd -- Total water use</b>	646 mgd -- Groundwater In ECFT

Best available information as of May 21, 2014

# Assessment of “Current” Water Use in the RWSP and ECFT Model

RWSP Historical Use (1995 to 2010)	ECFT Model (1995 to 2006)
<b>800 mgd -- Total water use</b>	646 mgd -- Groundwater In ECFT
	60 mgd -- Surface water

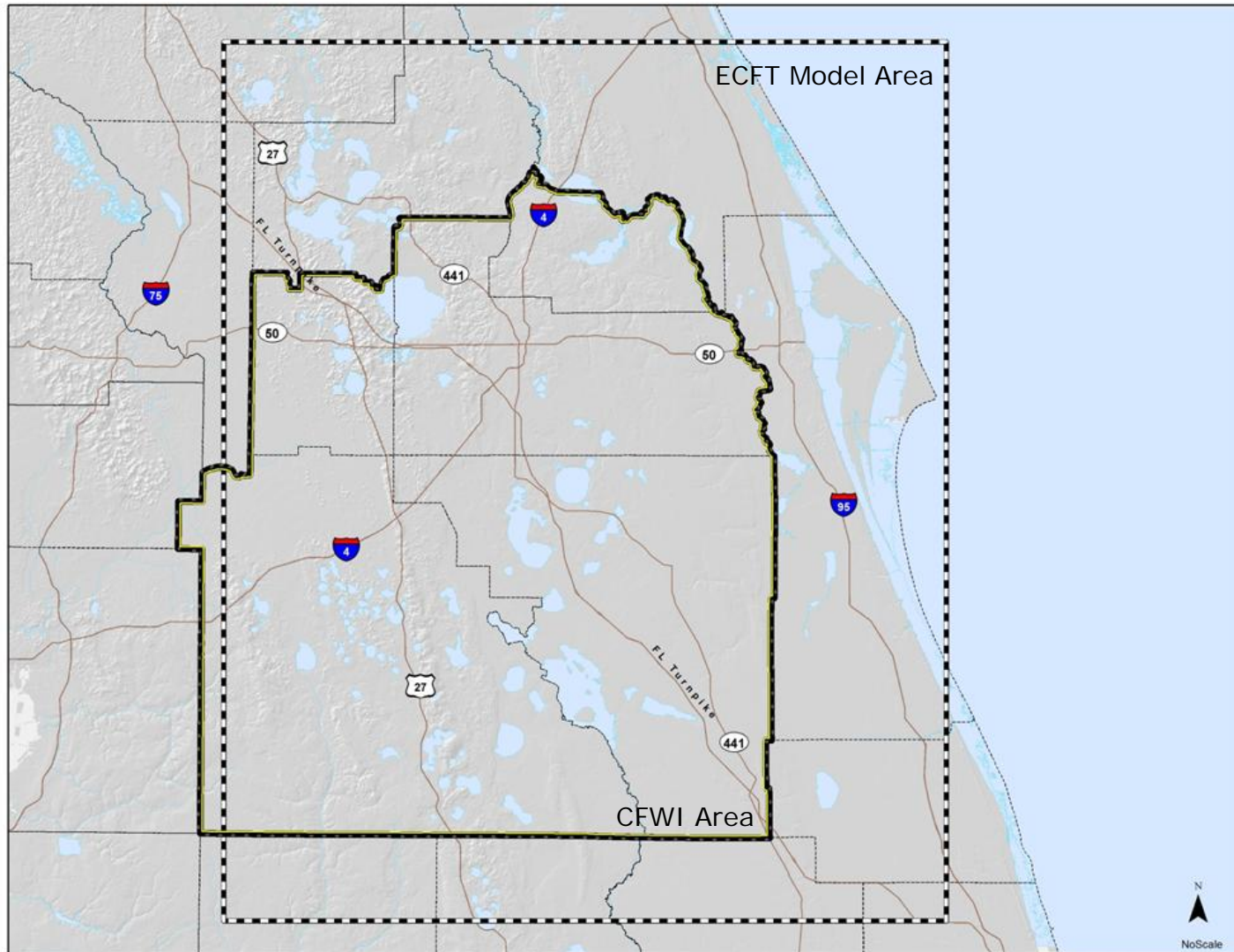
Best available information as of May 21, 2014

# Assessment of “Current” Water Use in the RWSP and ECFT Model

RWSP Historical Use (1995 to 2010)	ECFT Model (1995 to 2006)
<b>800 mgd -- Total water use</b>	646 mgd -- Groundwater In ECFT
	60 mgd -- Surface water
	25 mgd -- Outside ECFT/in CFWI

Best available information as of May 21, 2014

# CFWI and ECFT Groundwater Flow Model Areas



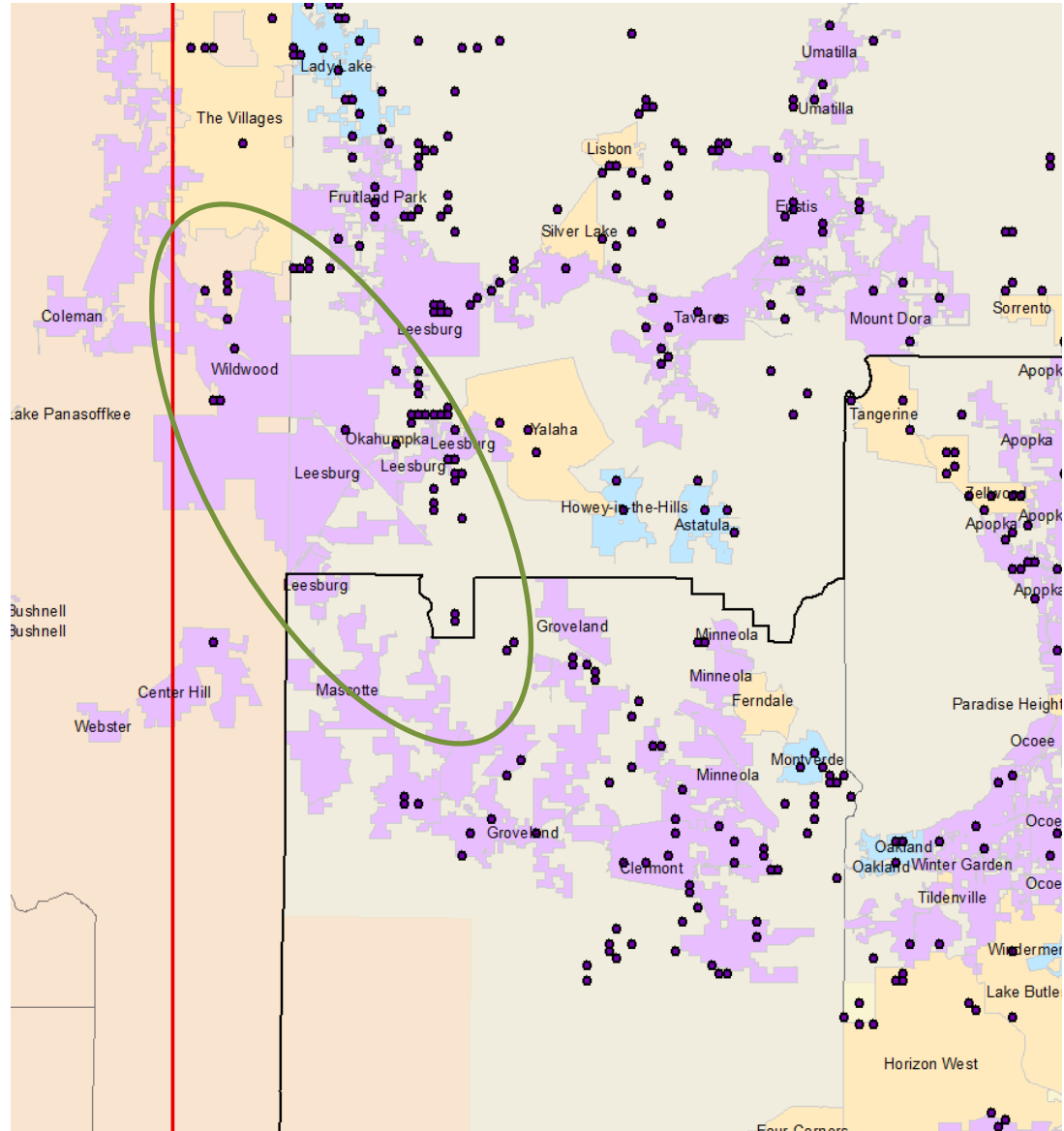
# Assessment of “Current” Water Use in the RWSP and ECFT Model

RWSP Historical Use (1995 to 2010)	ECFT Model (1995 to 2006)
<b>800 mgd -- Total water use</b>	646 mgd -- Groundwater In ECFT
	60 mgd -- Surface water
	25 mgd -- Outside ECFT/in CFWI
	8 mgd -- Leesburg PWS in RWSP

Best available information as of May 21, 2014

# PS Differences in Lake County

- Leesburg was included RWSP totals in Lake County but not in the ECFT totals for Public Supply



# Assessment of “Current” Water Use in the RWSP and ECFT Model

RWSP Historical Use (1995 to 2010)	ECFT Model (1995 to 2006)
<b>800 mgd -- Total water use</b>	646 mgd -- Groundwater In ECFT
	60 mgd -- Surface water
	25 mgd -- Outside ECFT/in CFWI
	8 mgd -- Leesburg PWS in RWSP
	19 mgd -- LRA not included

Best available information as of May 21, 2014



# Assessment of “Current” Water Use in the RWSP and ECFT Model

RWSP Historical Use (1995 to 2010)	ECFT Model (1995 to 2006)
<b>800 mgd -- Total water use</b>	646 mgd -- Groundwater In ECFT
	60 mgd -- Surface water
	25 mgd -- Outside ECFT/in CFWI
	8 mgd -- Leesburg PWS in RWSP
	19 mgd -- LRA not included
	35 mgd -- AG methods differences

Best available information as of May 21, 2014

# Assessment of “Current” Water Use in the RWSP and ECFT Model

RWSP Historical Use (1995 to 2010)	ECFT Model (1995 to 2006)
<b>800 mgd -- Total water use</b>	646 mgd -- Groundwater In ECFT
	60 mgd -- Surface water
	25 mgd -- Outside ECFT/in CFWI
	8 mgd -- Leesburg PWS in RWSP
	19 mgd -- LRA not included
	35 mgd -- AG methods differences
	<b>793 mgd -- Total Water Use</b>

Best available information as of May 21, 2014

# Next Steps

- Update Reference Condition as necessary
- Assess potential for impacts to Measuring Sticks
- Evaluate effects of water use uncertainties on model performance

# Path Forward for Project Scenarios

- Demand distributed based on 2015 projected need
- Identify projects to improve environmental performance (e.g., recharge projects)
- Identify additional water supply projects