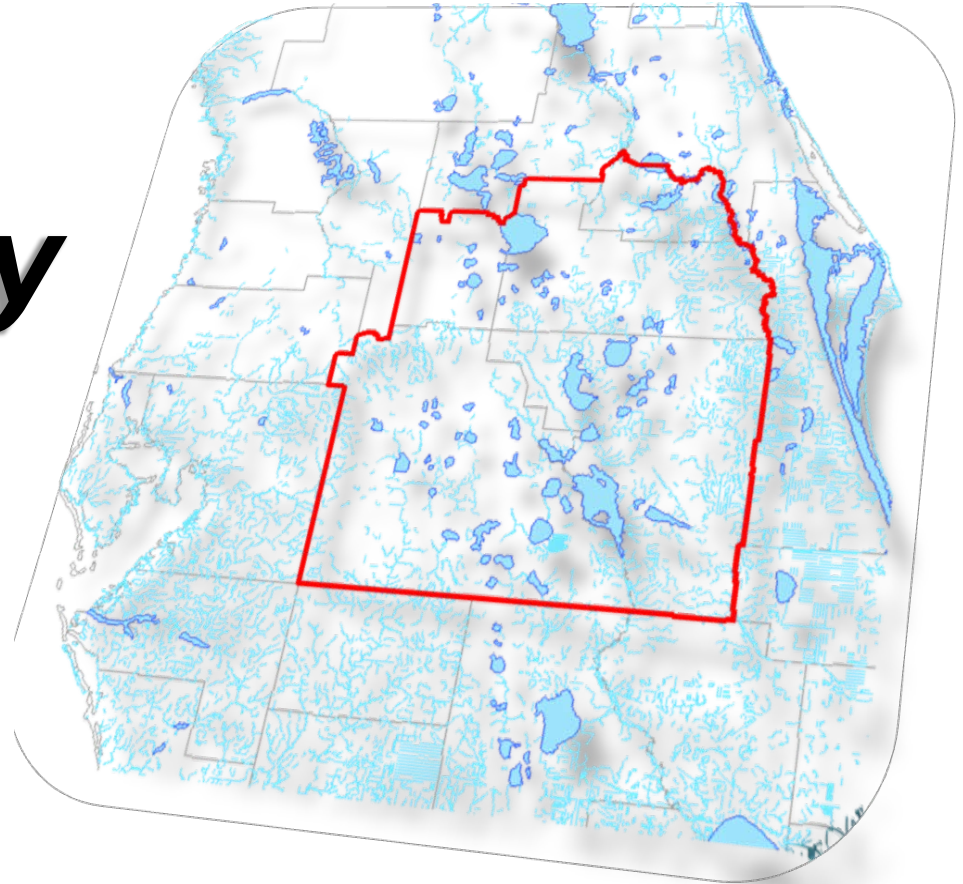


CFWI Steering Committee Meeting
April 25, 2014

Regulatory Team Update



Lennart J. Lindahl, P.E.
Assistant Executive Director
South Florida Water Management District

Regulatory Team Membership

Team Leader	Len Lindahl, SFWMD
Water Management Districts	Mike Register, SJRWMD Alba Más, SWFWMD Sharon Trost, SFWMD
Florida Department of Environmental Protection	Janet Llewellyn, Office of Water Policy
Florida Department of Agriculture & Consumer Services	Steve Lamb, Federico, Lamb & Associates
Environmental	Jane Graham, Audubon Florida <i>Richard Hamann, University of Florida</i>
Public Water Supply Utilities	Krystal Azzarella, Polk County Debbie Bradshaw, OUC
Legal Counsel	Mary Ellen Winkler, SJRWMD Laura Donaldson, SWFWMD Beth Ross, SFWMD Ed de la Parte, Public Water Supply <i>Silvia Alderman, Public Water Supply</i>

Regulatory Team

H1- Report consumptive use program data

- Updated list of pending consumptive use permit applications
 - Separated by District
 - Requested permit duration
 - Identifies requests for new quantities by source
- Available on cfwiwater.com

Regulatory Team

H4- Review management activities

- Continued discussion and progress
 - Working with Groundwater Availability (GAT), Hydrologic Assessment Team (HAT), and Groundwater Subteam to determine modeled strategies
 - Reclaimed water projects
 - Mitigation
 - Wellfield operational plans
- Participated in Solutions Planning Team training held on April 15th

Regulatory Team

Legal

- Draft “Caveat” Language for CFWI RWSP
- Sunshine Topics



Regulatory Team

Upcoming

- Field trips
- Joint meeting with Solutions Planning Team on 5/21



Thank you.

