

Data Monitoring and Investigations Team

*Steering Committee Meeting
April 25, 2014*

www.cfwiwater.com

DMIT Goals

- Ensure that available hydrologic, environmental, and other pertinent data collected throughout the region is identified, inventoried, and accessible
- Develop recommendations for future regional monitoring

Schedule

Schedule Components	Standard data inventory sheet (D1)	31-Aug-11
	Intra-and inter-agency investigation of other existing data (D2)	31-Oct-11
	Inventory Development (D3)	31-Jan-12 (Ongoing)
	Establish Minimum Standards for Data Collection (D4)	31 Dec 13
	Develop Recommendations for Regional Monitoring(D5)	1 Mar 14

Action Items from 12/13 SC

1. Investigate placing inventory on CFWI using Google Earth application – **COMPLETE**

Central Florida Water Initiative

Home

Meetings

Solutions Planning

Regulatory

Regional Water Supply Plan

Minimum Flows and Levels and Water Reservations

Hydrologic Analysis

Environmental Measures

Data, Monitoring and Investigations

Groundwater Availability

CFWI Resources

CFCA Resources

Contacts

By accessing this site, you agree to accept the terms and conditions of the [liability disclaimer](#).

Data, Monitoring and Investigations

The Data, Monitoring and Investigations Team is developing a single reference source inventory of regional monitoring data to support of Central Florida Water Initiative (CFWI) technical and regulatory activities.

Tasks

The team will:

- Develop and maintain an inventory of available hydrologic, environmental, and other pertinent data and investigations in the region
- If approved by the Steering Committee, investigate the feasibility of developing a web-based portal that enables users to access available data and investigation reports from the different sources responsible for collecting and producing this information in the CFWI
- Establish minimum standards for future CFWI data collection, including data collected to meet regulatory requirements
- Inventory investigations and data collected in support of the other technical teams
- Identify areas of insufficient or potentially redundant data collection

Resources

- [Google Earth database for the Data, Monitoring and Investigations Team CFWI inventory](#)
- [Data, Monitoring and Investigations Team fact sheet](#)



Scientists collect a variety of water resource data, including surface water and groundwater information, to understand trends.



http://cfwiwater.com/pdfs/CFWI_Inventory_20140331.kmz

Action Items from 12/13 SC

2. Complete Task D5, Recommendations for Regional Monitoring – **UNDERWAY**

Regional Monitoring Plan-Contents

Task D5

- I. Summary of existing monitoring inventory
 - a. Where data collection is most dense
 - b. Where data collection could improve
- II. Monitoring Program Recommendations
 - a. Priority list: sites needed for MFLs, EMT, model calibration, and other WMD identified purposes
 - b. General recommendations : guidelines on types of sites that should be monitored and how they can be more efficiently monitored
- III. Process for updating Inventory
- IV. Recommended Number of Sites*

Surficial Aquifer System

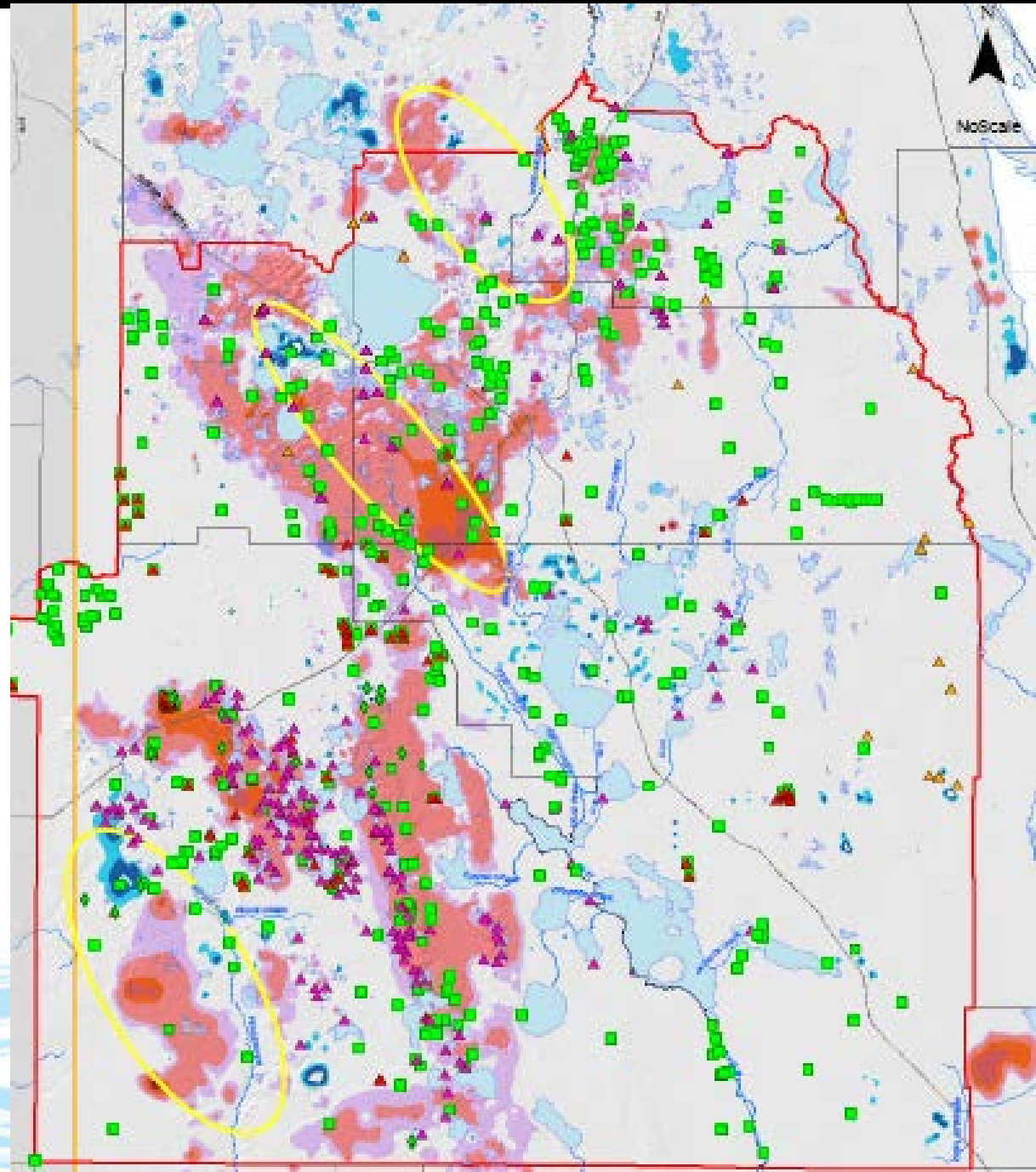


Figure 1: Areas of Additional Data Collection - Surficial Aquifer

Active SAS Water Level Sites		Area of Additional Data Collection - SAS	-0.5 to -1 ft
Site or Station Category		CFWI Boundary	No Change
Groundwater Monitoring Well/Piezometer	Groundwater Wetland Well/Piezometer	USGS ECFM Model Domain	0.5 to 1 ft
Surface Water Lake/Pond	Surface Water Stilling Well	SAS 2035 Drawdown	1 to 3 ft
Surface Water Wetland		Surficial Aquifer System Change (ft)	3 to 5 ft
		-2.5	5 to 10 ft
		< -1 ft	> 10 ft

Upper Floridan Aquifer

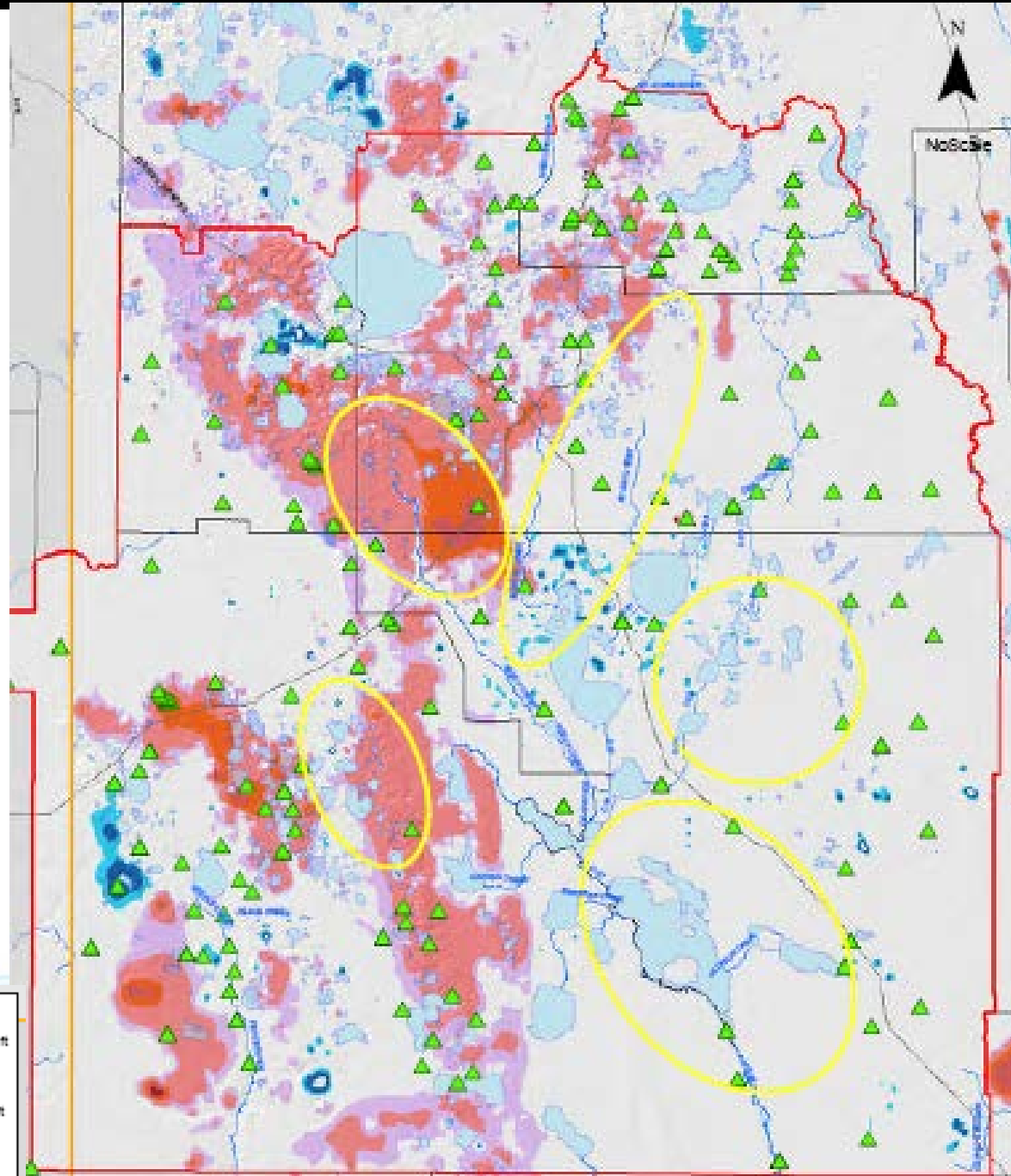
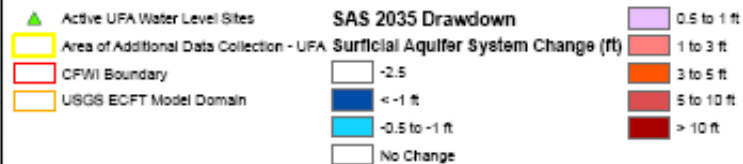


Figure 2: Areas of Additional Data Collection - Upper Floridan Aquifer



Lower Floridan Aquifer

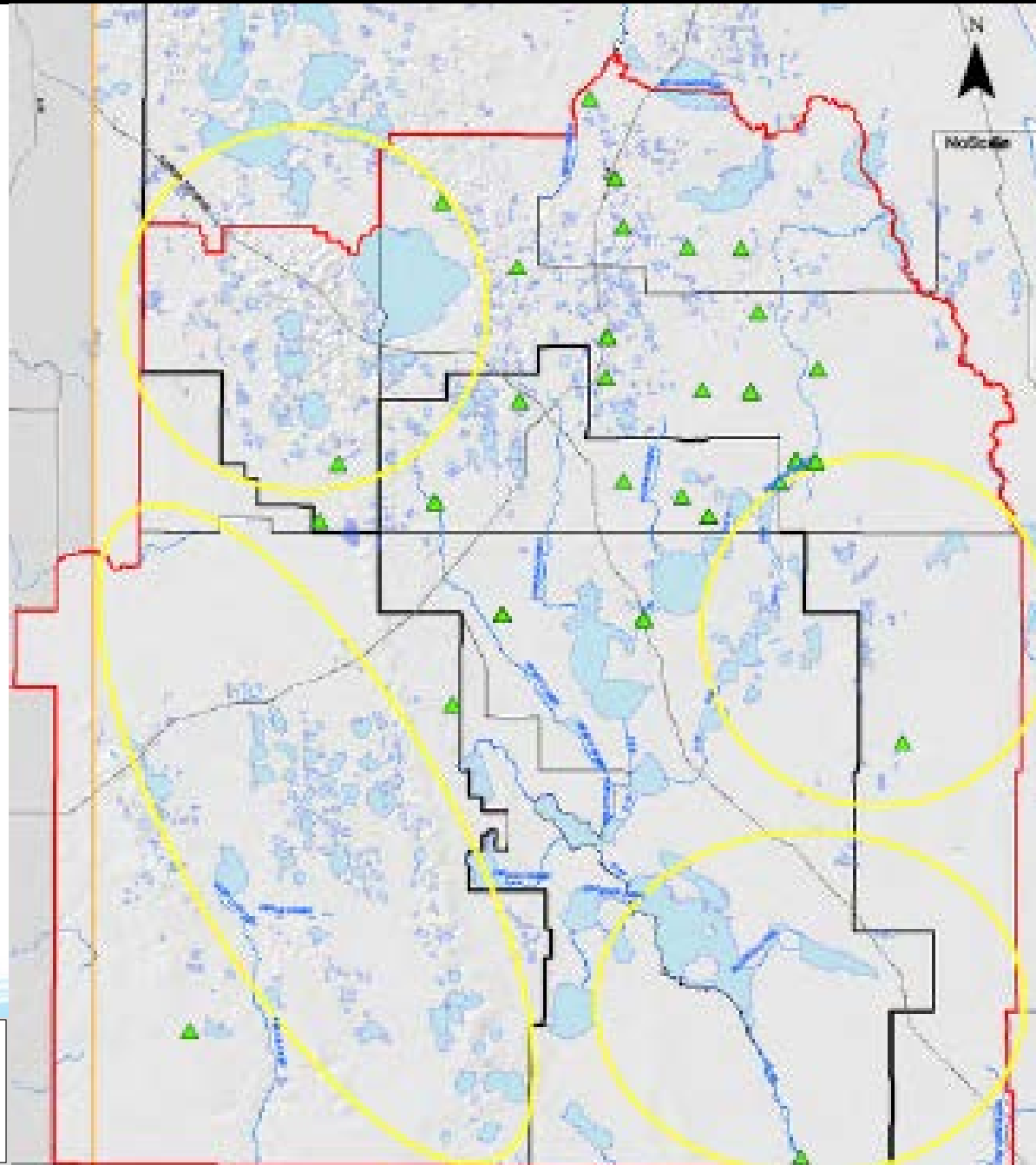


Figure 3: Areas of Additional Data Collection - Lower Floridan Aquifer

- ▲ Active LFA Water Level Sites
- Area of Additional Data Collection - LFA
- CFWI Boundary
- USGS ECFT Model Domain

Future Work

- Complete monitoring plan recommendation documentation
 - Utilize existing geo-statistical network recommendations
 - Summarize monitoring options for Steering Committee to discuss
 - Provide an implementation plan for CFWI, if SC feels one is needed
- Request Task D5 schedule extension to June 27, 2014, to complete above

Questions?

