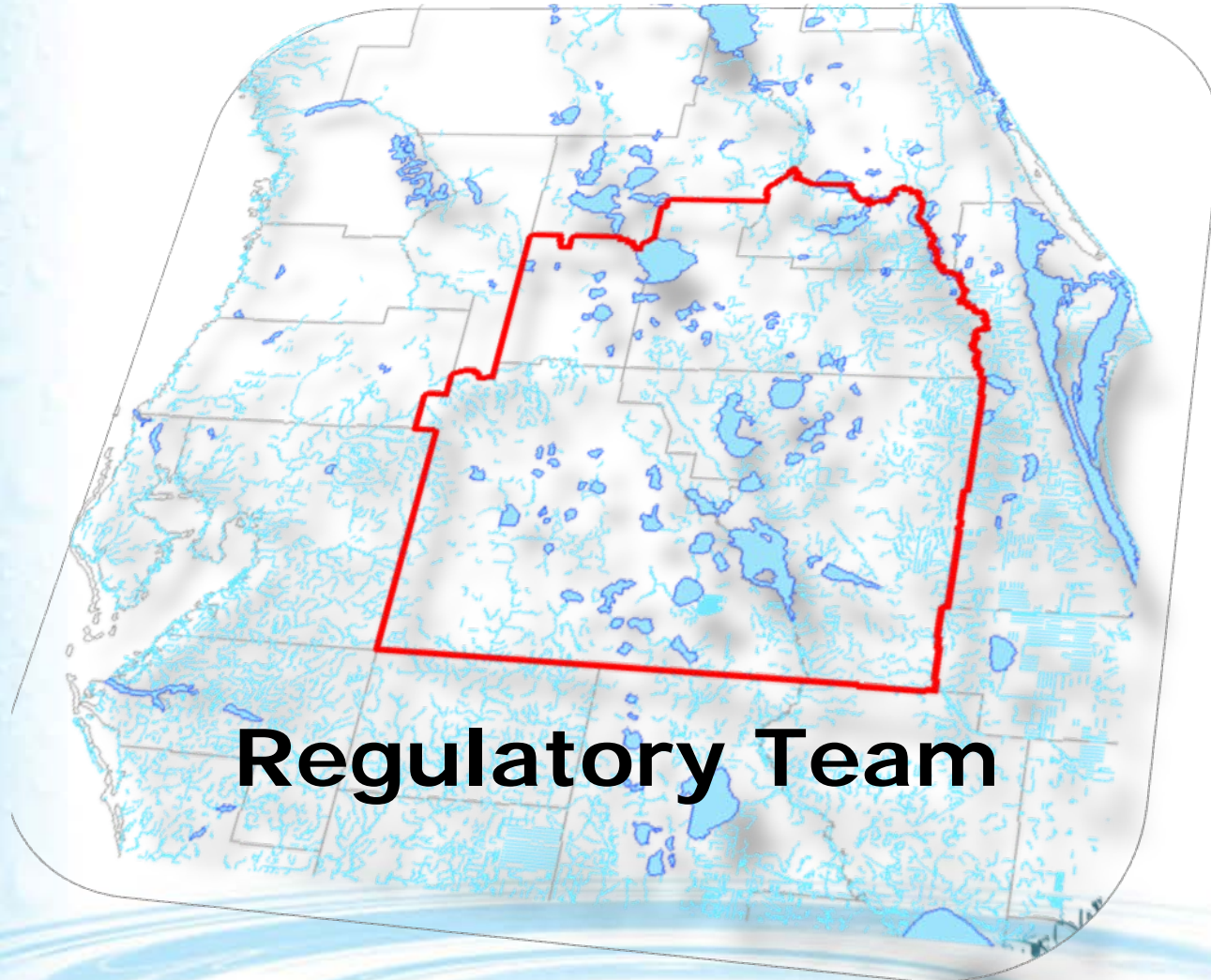


Central Florida Water Initiative



Regulatory Team

February 7, 2014

Regulatory Team Meeting Task List

	Task	Responsible Party	Anticipated Schedule
1	Provide 10 yr. compliance report info.	WMD's – Sharon Trost – lead - (SFWMD)	Prior to February 7 th meeting
2	Conservation Menu	*SFWMD to coordinate generation of 'menu' *WMDs to email Len SW & SJR contacts	Prior to February 28 th Steering Committee meeting
3	Top utility customer identification of 7 largest CFWI utilities	Utility reps	Prior to February 28 th Steering Committee meeting
4	Arrange field trip for February 7 th meeting – 9:00 - 12:00	SFWMD	Details to be provided to Team by 2/5/14
5	Short Summary of relationship of existing/developing Water Supply plans to CFWI RWSP	SFWMD in coordination with SJR and SW Legal reps	February 7 th Team meeting
6	Emerging Water Reservation and MFL Developments	SFWMD in Coordination with SJR and SW	February 19 th Team meeting
7	Reg Team schedule, process, and deliverables	SFWMD	March 7 th Team meeting
8	Future meeting presentation re: SWUCA and N. Tampa Bay strategies	SWFWMD	TBD

Relationship Between Existing / Developing Water Supply Plans to Joint CFWI Plan

South Florida Water Management District

■ Overview:

- Five, separate regional water supply plans and associated updates
- Entire SFWMD in a planning region

■ Regions:

- Lower East Coast
- Lower West Coast
- Upper East Coast
- Lower Kissimmee Basin
- Central Florida / CFWI

Relationship Between Existing / Developing Water Supply Plans to Joint CFWI Plan

Southwest Florida Water Management District

■ Overview:

- One district water supply plan with 4 planning regions
- Entire SWFWMD in a planning region

■ Regions:

- Northern Region
- Tampa Bay Region
- Heartland Region
- Southern Region

Relationship Between Existing / Developing Water Supply Plans to Joint CFWI Plan

St. Johns River Water Management District

■ Overview:

- One district water supply plan with 4 planning regions
- Entire SJRWMD in a planning region

■ Regions:

- North Florida Area (#1)
- North Central Area (#2)
- Central Florida / CFWI (#3)
- South Area (#4)

CFWI Regional Water Supply Plan Adoption and On-going Activities

- **Overview of discussion topics:**
 - **Adoption approach for Joint CFWI Plan**
 - **Relationship of CFWI Regional Water Supply Plan to on-going WMD activities**

Joint CFWI Regional Water Supply Plan Adoption Approach

- **Adoption approach:**
 - **Generally applicable components will be adopted by each WMD for their jurisdiction**
 - **WMDs will also endorse the CFWI Plan as whole**
 - **SJRWMD intends to adopt CFWI Plan and its district water supply plan concurrently, with a note assuring consistency**

Relationship of Joint CFWI Regional Water Supply Plan to On-going WMD Activities

- **Handout describing:**
 - **What activities are on-going**
 - **When anticipated WMD action will occur**
- **Future discussion item**
 - **Considerations regarding Regulatory Team effort and On-going activity**

Discussion

