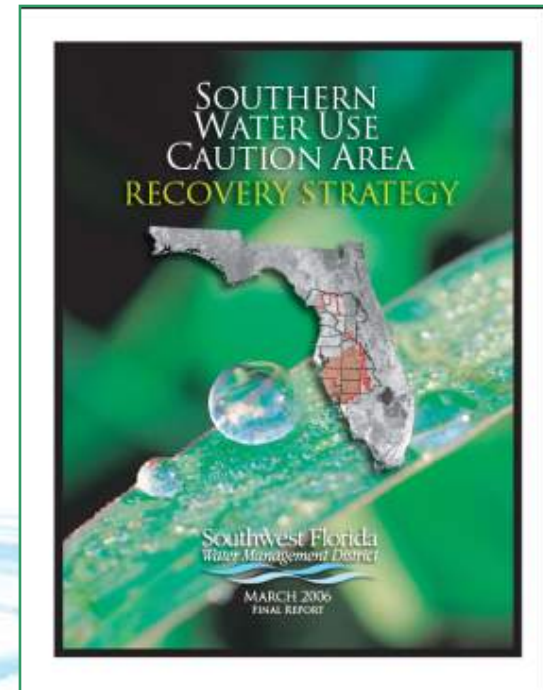
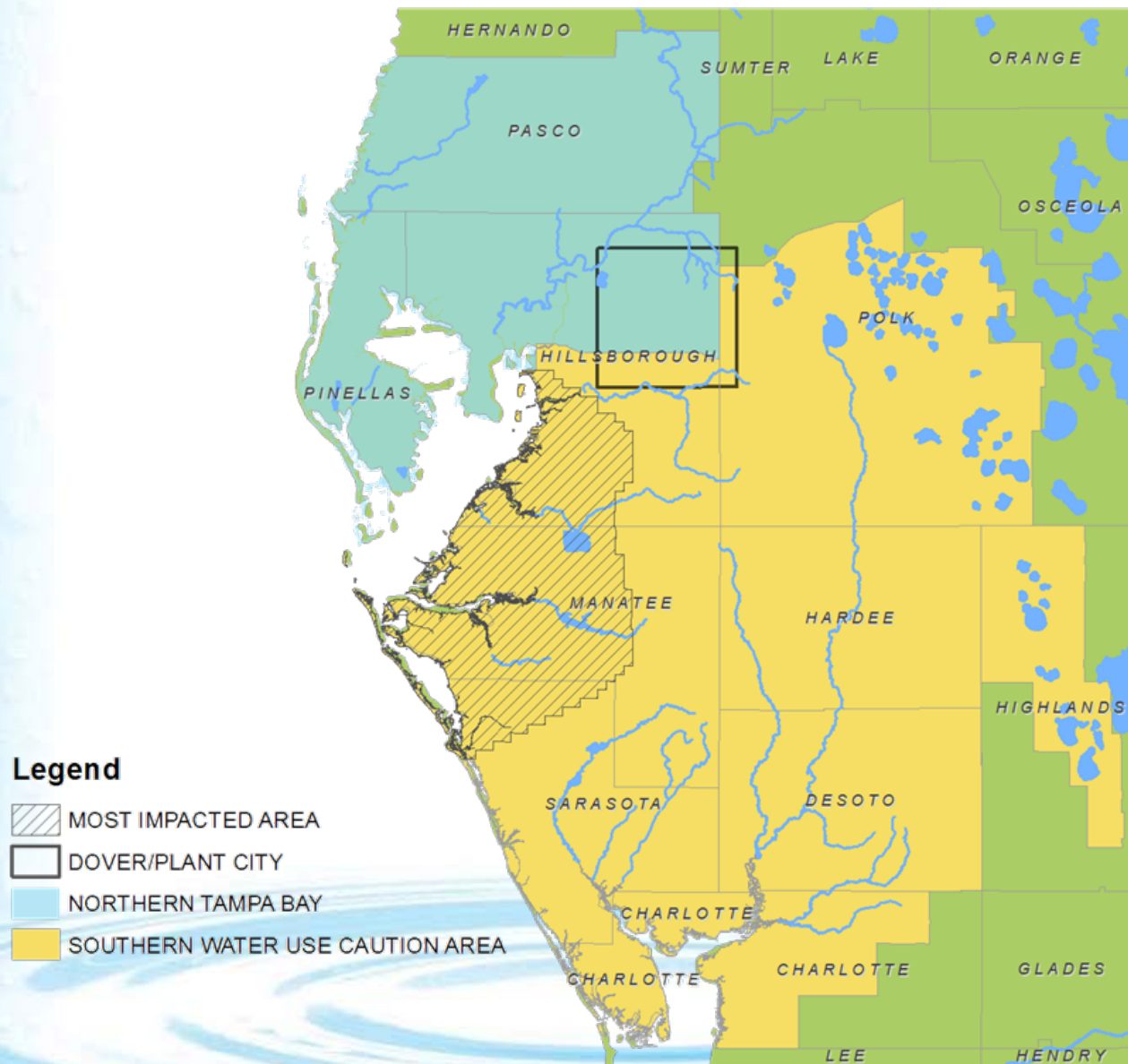


Southern Water Use Caution Area Recovery Strategy

*CFWI Solutions Team
January 17, 2014*



Water Use Caution Areas



SWUCA History

1990s

1992

- Declared SWUCA
- Saltwater intrusion
- Lowered lake levels

1994

- SWUCA 1 Rules and NWSI

1996/1997

- MFLs
- Priority List
- Recovery Strategy

1997

- SWUCA 1 order received & appealed

2000s

2000

- SWUCA 1 appeals

2001

- Governing Board kickoff for SWUCA 2

2003

- Implement SWUCA 1 rules

2006

- Governing Board adopts SWUCA 2 Recovery Strategy

2007

- SWUCA 2 Recovery Strategy effective

Governing Board Approved Guiding Principles

- **Contribute to management & resource recovery**
- **Protect investments of existing WUP holders**
- **Allow for economic expansion**
- **Based on best available peer reviewed science**
- **Minimize the need for rule revisions**
- **Financial and regulatory incentives**
- **Implemented in a practical timeframe**
- **Consistent with other Statewide Strategies**
- **Strategy is designed to meet these principles**

Six Major Elements of SWUCA Recovery Strategy

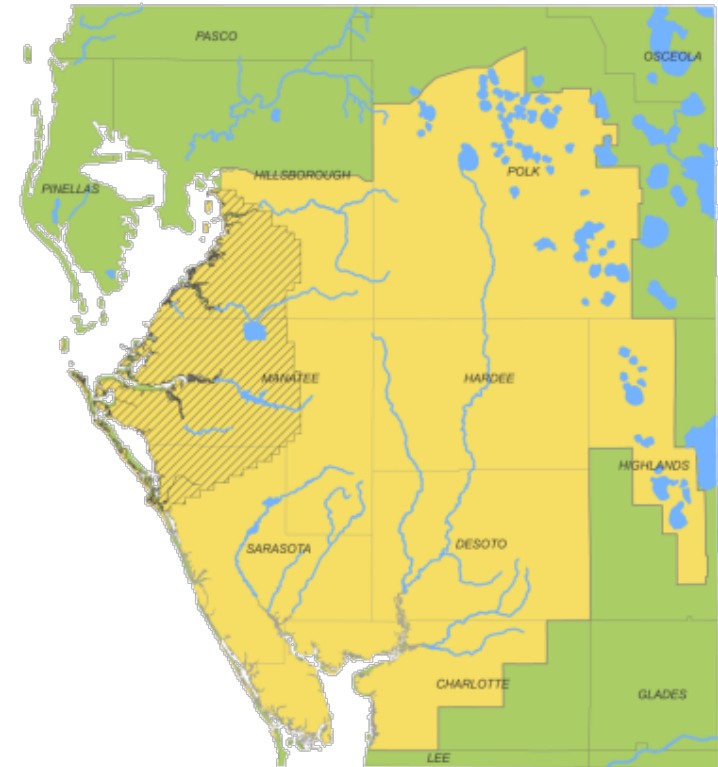
- 1. Regional Water Supply Planning**
- 2. Use of Existing Rules**
- 3. Enhancements to Existing Rules**
- 4. Financial Incentives to Develop AWS**
- 5. Develop Projects to Reestablish MFLs**
- 6. Resource Monitoring**

Adaptive Management

- “...management approaches...will be reevaluated and updated over time.”

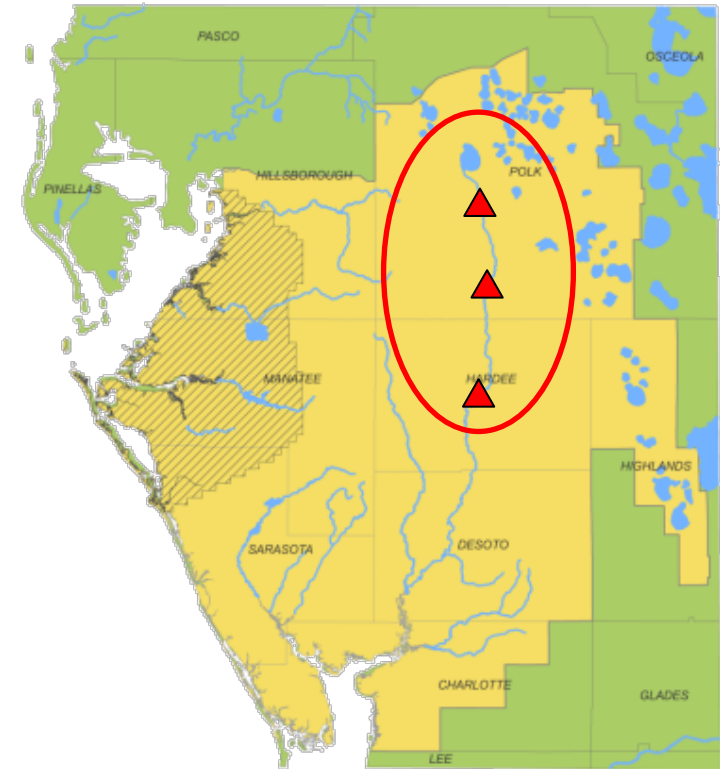
Goals

1. Restore minimum flows to the upper Peace River
2. Restore minimum levels to priority lakes
3. Achieve the Saltwater Intrusion Minimum Aquifer Level (SWIMAL)
4. Ensure sufficient water supplies for all existing and projected reasonable beneficial uses



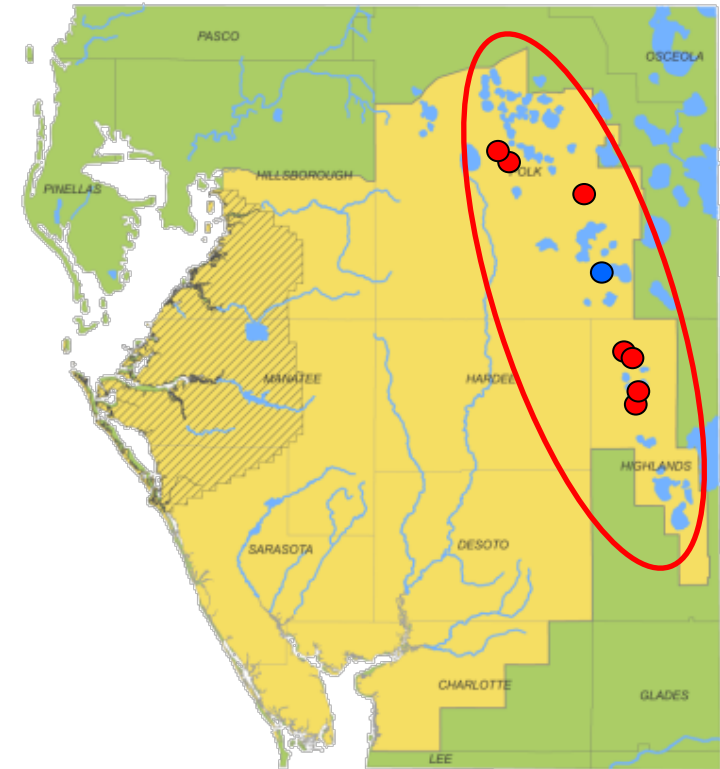
Goals

- 1. Restore minimum flows to the upper Peace River**
2. Restore minimum levels to priority lakes
3. Achieve the Saltwater Intrusion Minimum Aquifer Level (SWIMAL)
4. Ensure sufficient water supplies for all existing and projected reasonable beneficial uses



Goals

1. Restore minimum flows to the upper Peace River
2. **Restore minimum levels to priority lakes**
3. Achieve the Saltwater Intrusion Minimum Aquifer Level (SWIMAL)
4. Ensure sufficient water supplies for all existing and projected reasonable beneficial uses



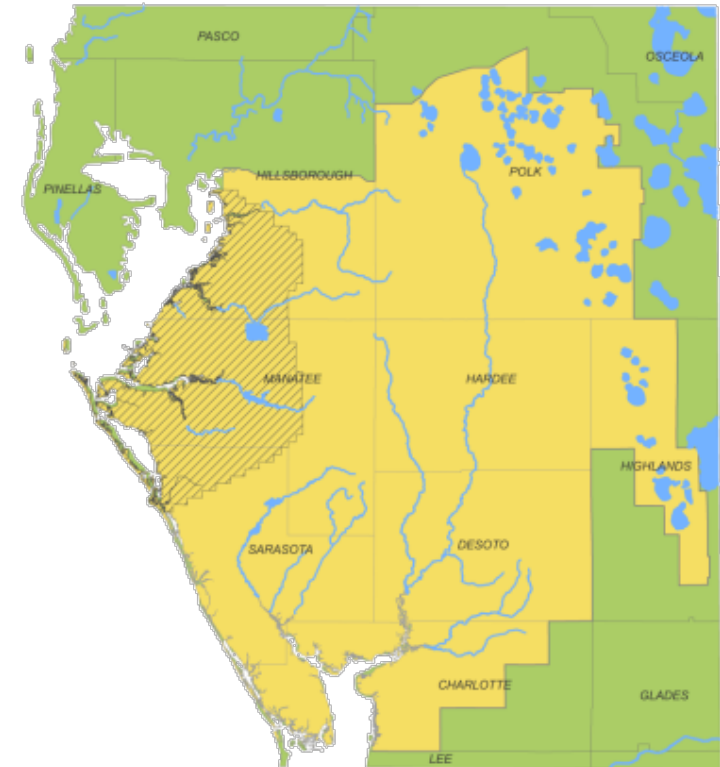
Goals

1. Restore minimum flows to the upper Peace River
2. Restore minimum levels to priority lakes
3. **Achieve the Saltwater Intrusion Minimum Aquifer Level (SWIMAL)**
4. Ensure sufficient water supplies for all existing and projected reasonable beneficial uses



Goals

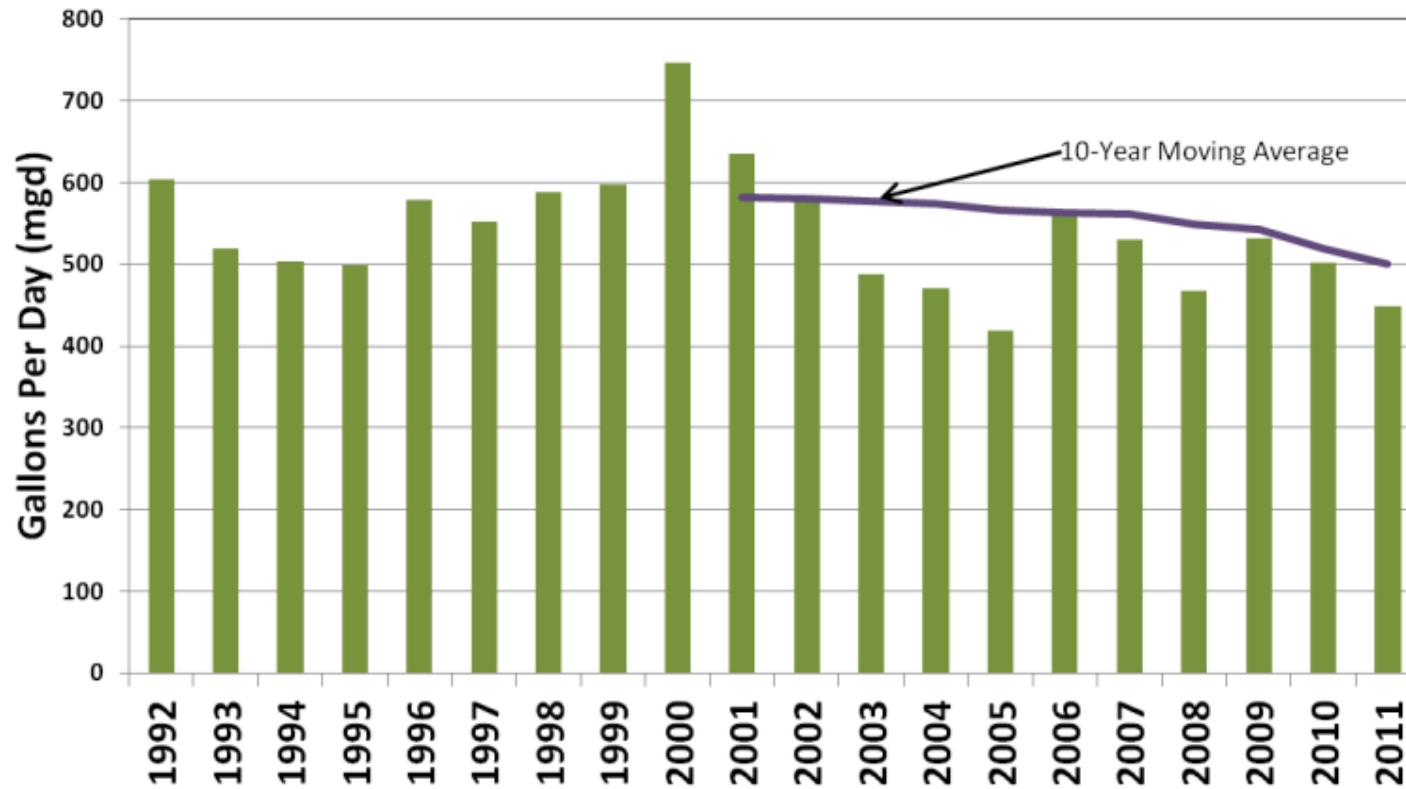
1. Restore minimum flows to the upper Peace River
2. Restore minimum levels to priority lakes
3. Achieve the Saltwater Intrusion Minimum Aquifer Level (SWIMAL)
4. **Ensure sufficient water supplies for all existing and projected reasonable beneficial uses**



Questions



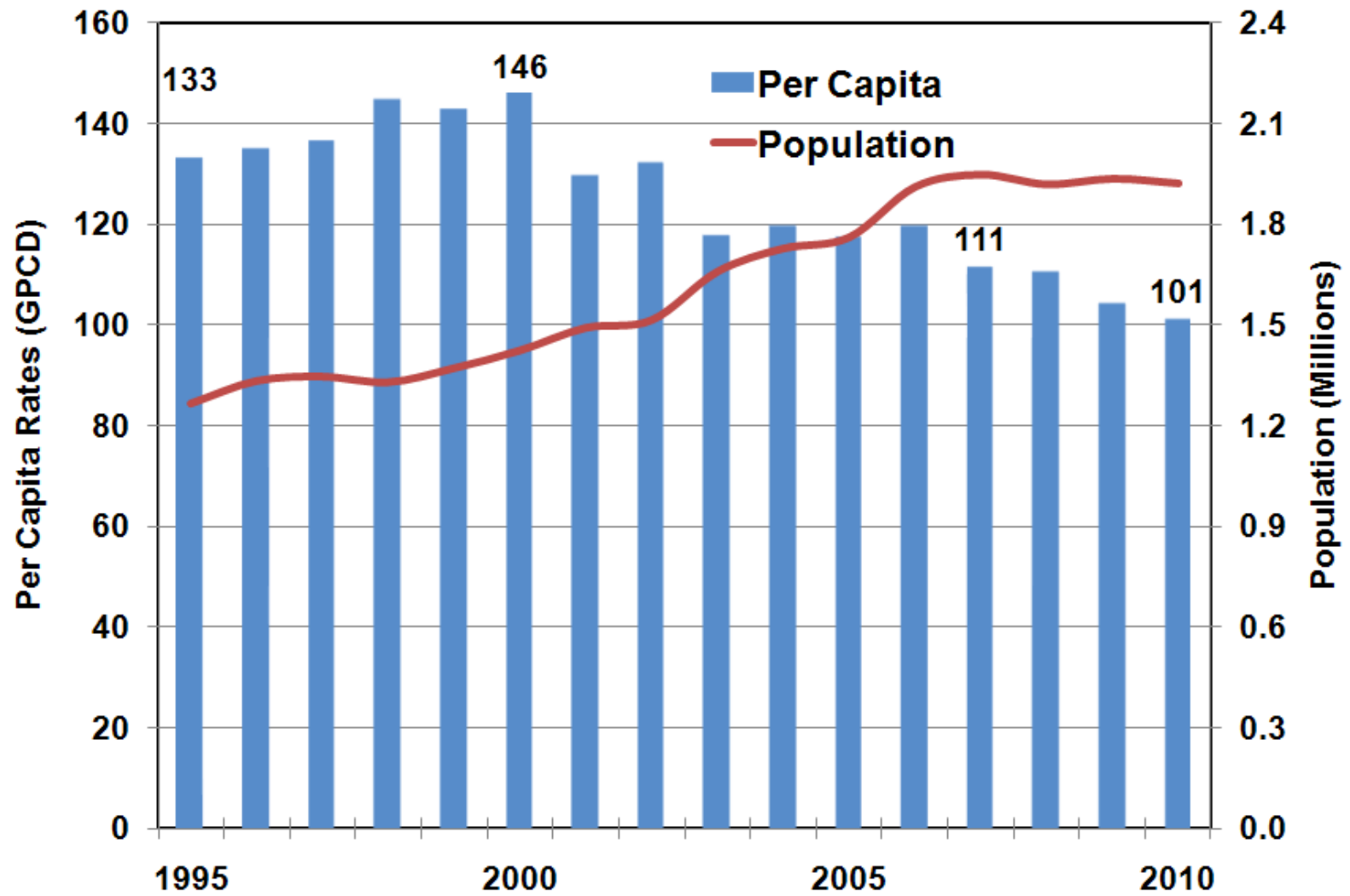
SWUCA: UFA Groundwater Withdrawals



Alternative Water Supply in the SWUCA



SWUCA Unadjusted Gross Per Capita Rates and Population



Ensure Sufficient Water Supplies

Findings

- Met all reasonable and beneficial uses
- 2025 demands to increase by 94 mgd

District Activities

- Cooperatively funded AWS
 - \$240 million for 50 mgd of capacity
 - \$25 million to FARMS for 23 mgd
 - \$3.6 million for 1 mgd of conservation

