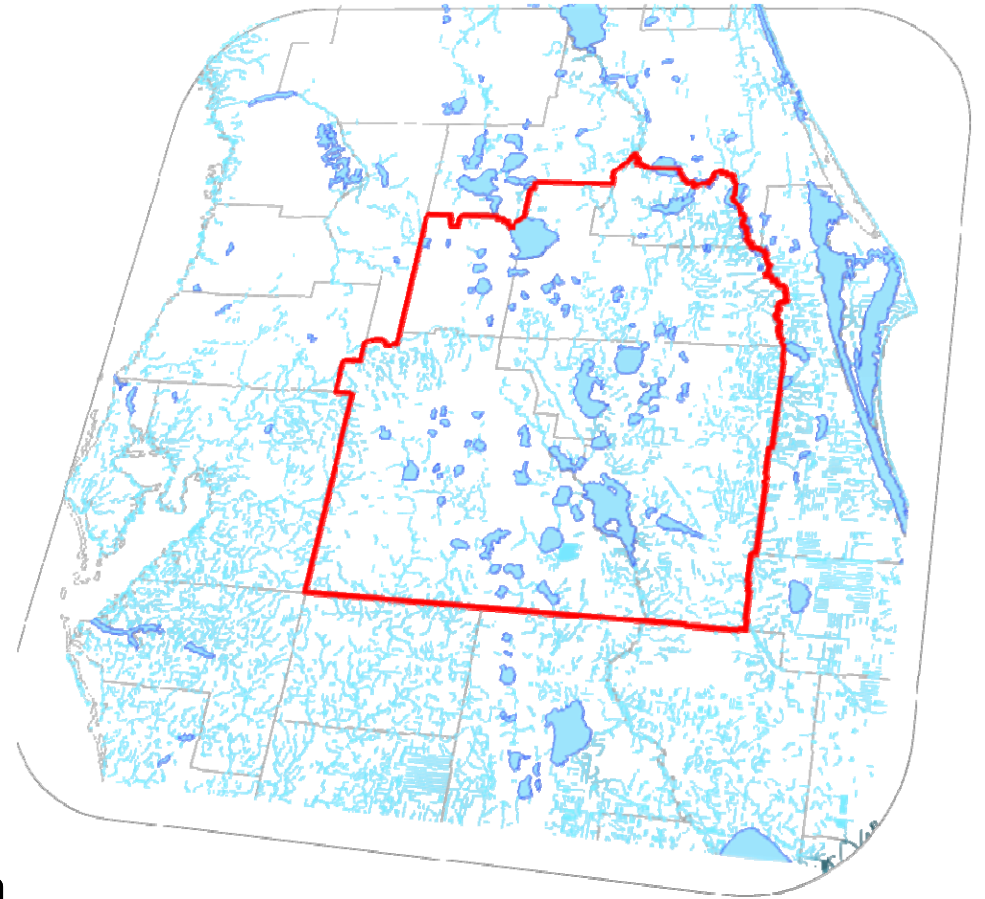


Environmental Measures Team Final Document

John Zahina-Ramos, Ph.D., PWS
CFWI Environmental Measures Team



CFWI Steering Committee Meeting
December 13, 2013

EMT Tasks

- (B1) Evaluate the current ecological condition of selected wetlands and surface waters in the CFWI
 - Evaluated over 400 wetlands and lakes
 - Created databases for organizing and distributing data
 - Developed tools to quantify the link between ecological condition and hydrology

EMT Tasks

- (B2) Apply tools to model output
 - Analyzed model output to predict recent and future wetland stress condition under different water withdrawal scenarios
 - Supported the GAT in their determination of groundwater availability

EMT Final Report

- The report contains detailed descriptions of methods, rationales and results from work conducted in fulfillment of Tasks B1 & B2
- The product of a collaborative effort with input from water management district, water supply utility and FDEP representatives

EMT Final Report

- Coordinated with the HAT, GAT, MFLRT and RWSPT to identify areas of wetland stress
- Posted report on the CFWI website with web links from the regional water supply plan
- <http://cfwiwater.com/environmental.html>

Requested Action

- Request acceptance of the EMT's final report entitled "*Development of Environmental Measures for Assessing Effects of Water Level Changes on Lakes and Wetlands in the Central Florida Water Initiative Area*"