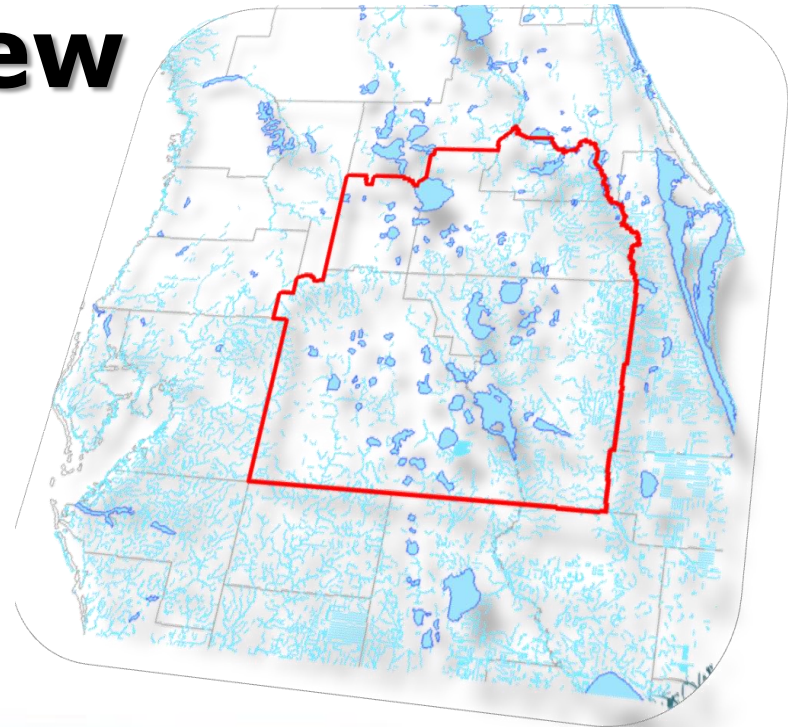


# Central Florida Water Initiative (CFWI) Overview

*A collaborative water supply  
planning endeavor to protect,  
develop, conserve and  
restore our water resources*

**Webinar**

August 29, 2013



# Today's Presentation

- What is CFWI?
- Why is water supply planning important in central Florida?
- How are we addressing the challenges?



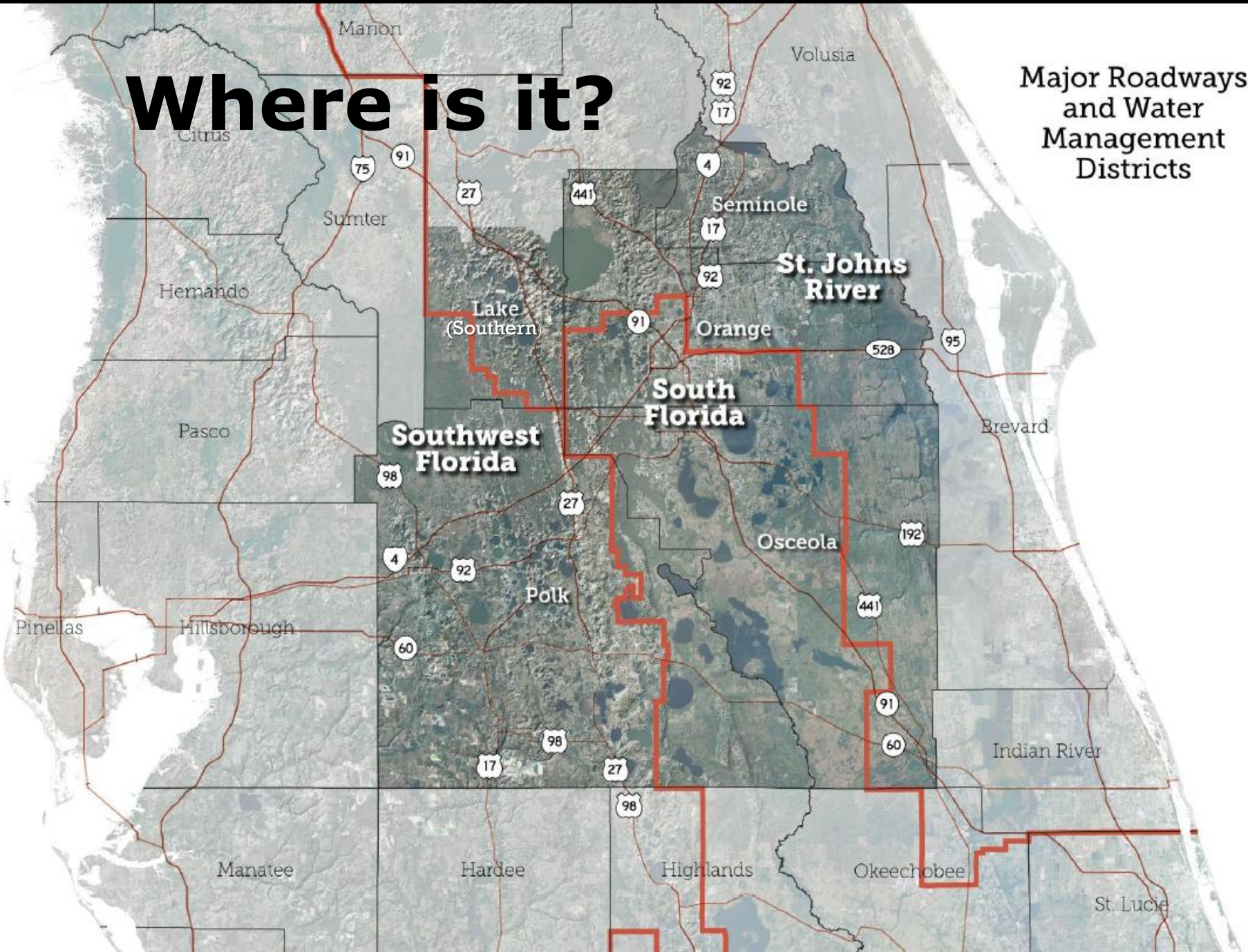
# What is the CFWI?

A collaborative water supply planning effort to:

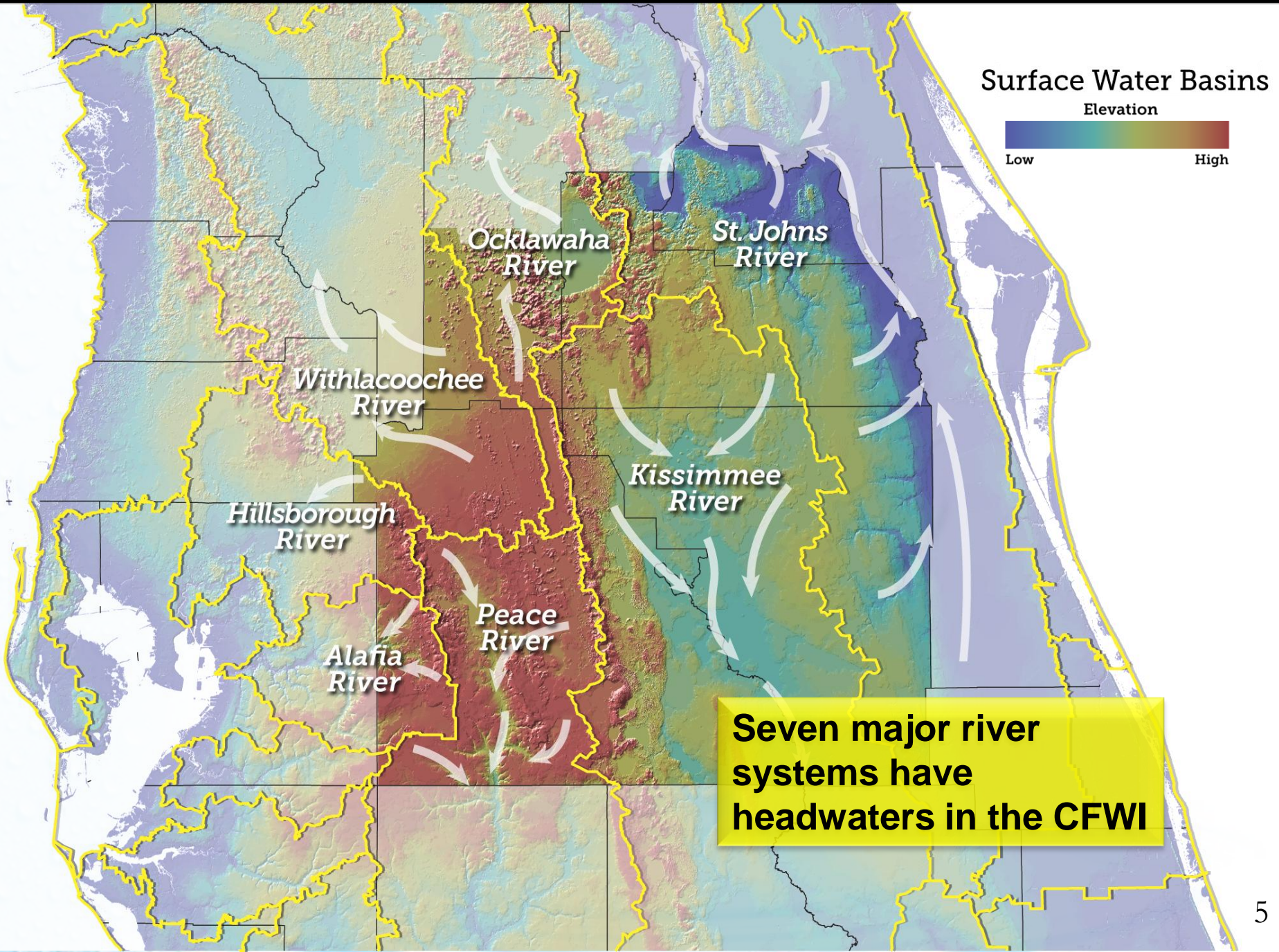
- Protect, develop, conserve and restore central Florida's water resources

## Where is it?

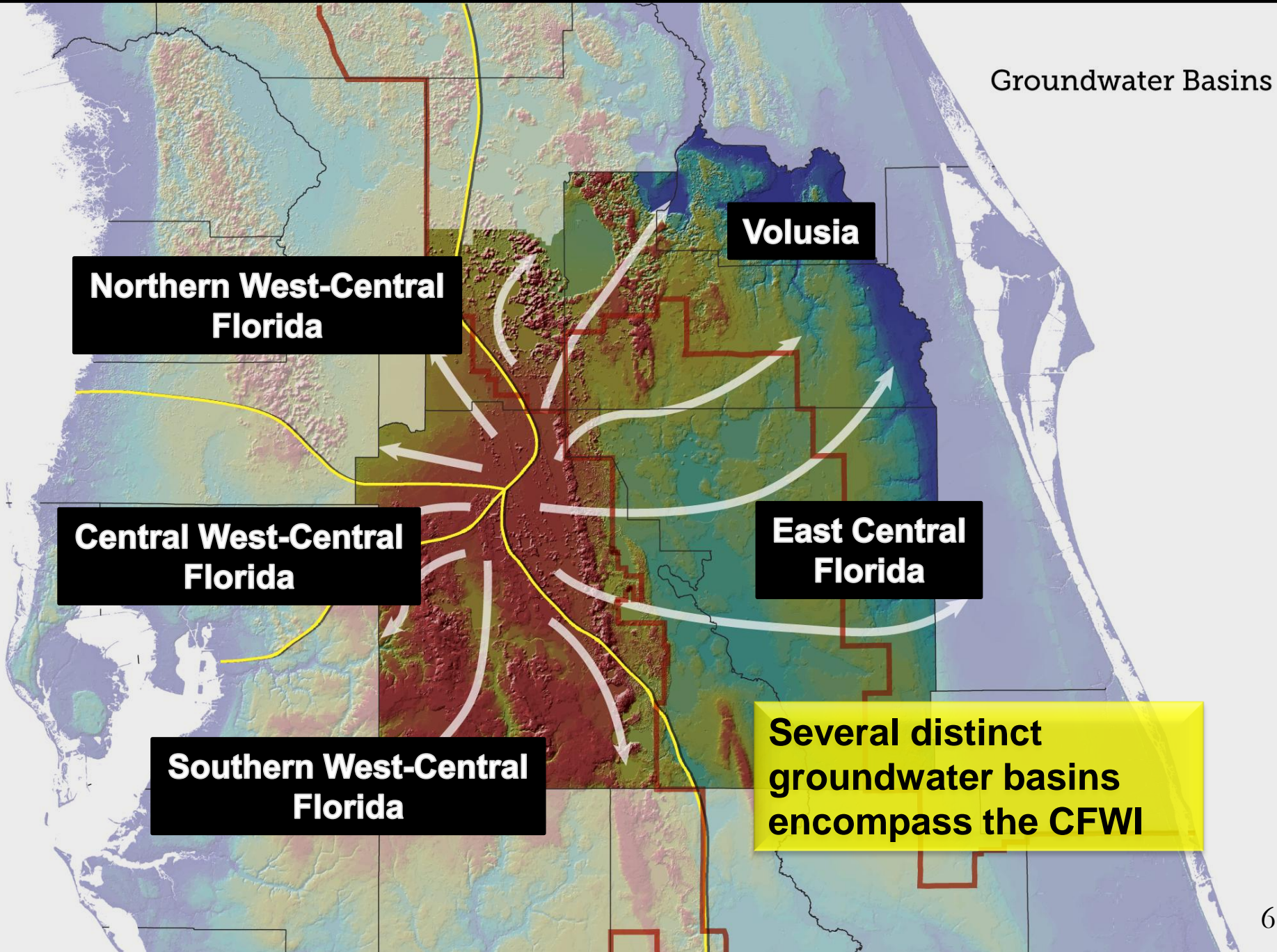
Major Roadways  
and Water  
Management  
Districts



# Central Florida Water Initiative



# Central Florida Water Initiative



Groundwater Basins

**Northern West-Central  
Florida**

**Volusia**

**Central West-Central  
Florida**

**East Central  
Florida**

**Southern West-Central  
Florida**

**Several distinct  
groundwater basins  
encompass the CFWI**

# What are the Challenges?

- Reaching sustainable groundwater limits
- Meeting future demands on the area's water resources
- Overlapping regulatory programs

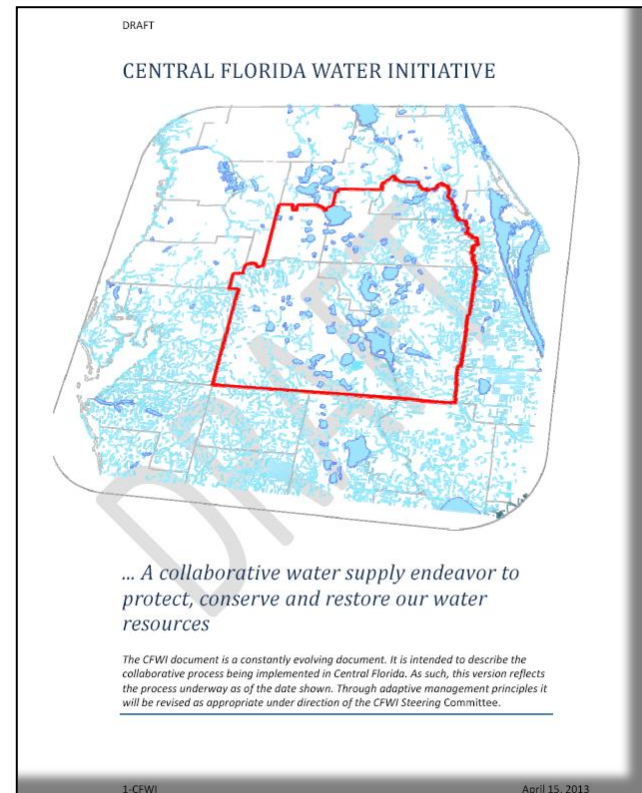
# CFWI Steering Committee

- Includes one representative each from:
  - Florida Department of Agriculture & Consumer Services (FDACS)
  - Florida Department of Environmental Protection (FDEP)
  - St. Johns River Water Management District Governing Board
  - South Florida Water Management District Governing Board
  - Southwest Florida Water Management District Governing Board
  - Utilities



# Steering Committee

- Primary oversight to guide a coordinated effort
- Guidance Document outlines the process based on three Guiding Principles



Guidance Document available at [CFWIwater.com](http://CFWIwater.com)

# Guiding Principles (simplified)

1. Identify sustainable quantities of groundwater sources
2. Develop strategies to meet water demands
3. Establish consistent rules

# Addressing the Challenges

- One shared groundwater model
- One coordinated strategy for Minimum Flows & Levels (MFLs)
- One Regional Water Supply Plan (RWSP)

# CFWI Timeline

## Ongoing

Technical Teams:

- Data Monitoring & Investigations
- Environmental Measures
- Groundwater Availability
- Hydrologic Analysis
- MFLs & Reservations
- Regional Water Supply Plan

## Nov. 30, 2013

Technical Work:

- Findings & Conclusions
- Draft Regional Water Supply Plan

## Dec. 31, 2014

Solutions Work:

- Projects
- Regulatory
- Financing
- Monitoring

# Next Phase is Solutions

- Develop strategies to meet water demands:
  - Optimize existing groundwater (withdrawal and recharge)
  - Identify viable demand management activities
  - Identify alternative water supplies
  - Identify any areas that may require recovery
  - Identify areas where consistency in rules may be needed

# Taking Questions

- Please submit your questions during the webinar
- We will answer your questions during the Question & Answer session following the presentations