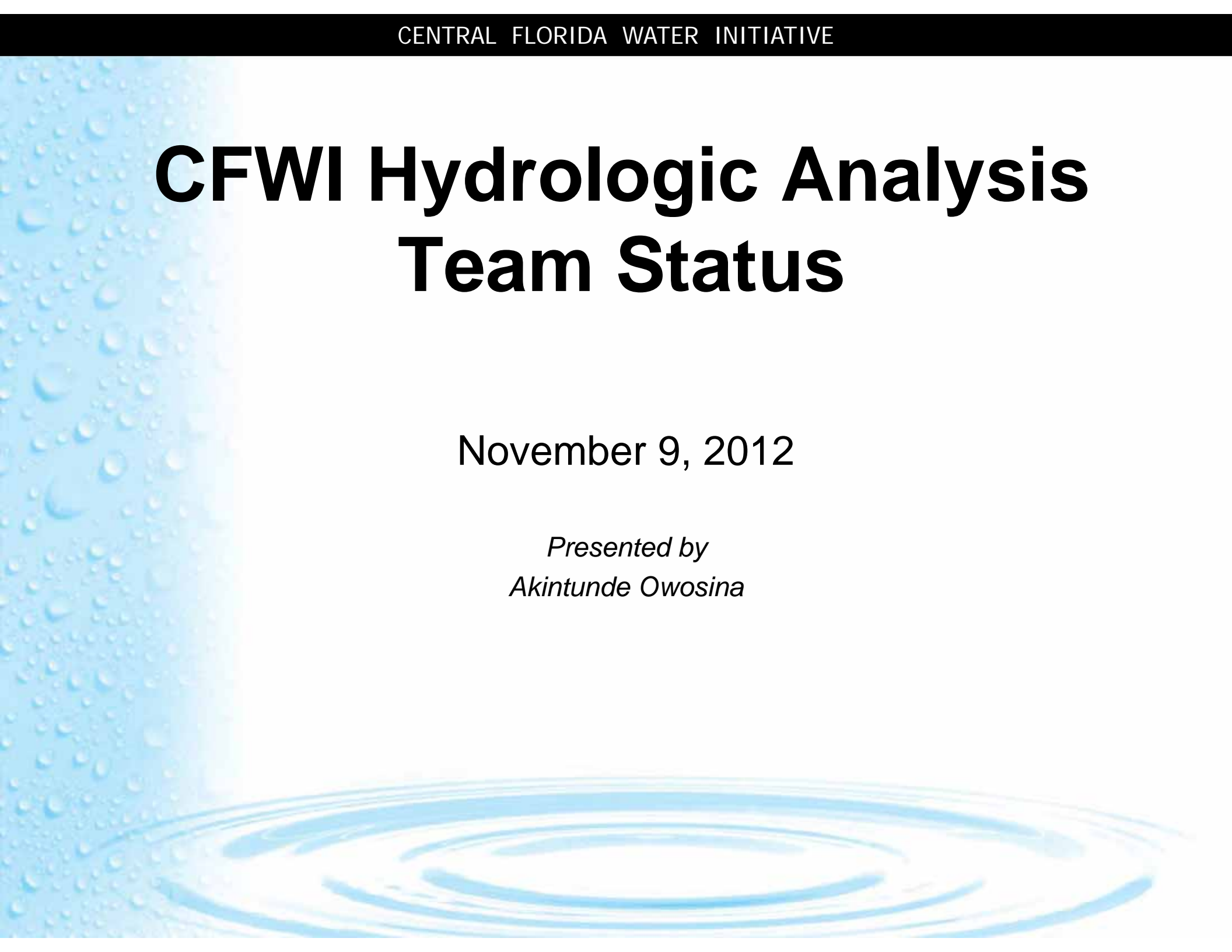


CFWI Hydrologic Analysis Team Status

November 9, 2012

*Presented by
Akintunde Owosina*



Status of CFWI Modeling

HAT has taken over the lead of the CFWI Groundwater Modeling and have initiated an effort to:

- Revise and update the model
- Apply the model for the CFWI Regional WSP
- Document the updates

Status of CFWI Modeling contd.

Outstanding Activities from August SC Meeting

Agricultural demands in calibration period

- HAT internal review completed
- Findings discussed with FDACS
- External peer review by IFAS commissioned
- Preliminary findings reported 10/23

Model water budget

- Tool development ongoing
- Initial version released for team use



Status of CFWI Modeling contd.

Agricultural demands in calibration period.

- HAT internal review concluded the approach was appropriate, the resulting values of agricultural water use were reasonable and appropriate in most of the CFWI region with the exception of the coastal counties where improvements can be made
- Preliminary findings by IFAS conclude that the approach of adjusting the AFSIRS model output using correction factors based on benchmark farms data is appropriate for the current effort
- The IFAS review identified limitations with the AFSIRS model and recommended the model be updated for use in a regulatory environment (where it is used without correction factors)

Agricultural Water Use in CFWI

Action

- HAT will continue with agricultural use as implemented with flexibility to refine the coastal counties
- HAT will use the future agriculture use projections by the Regional Water Supply Plan team for future scenarios

HAT Recommendation on AFSIRS

- The effort to update AFISRS should be explored
- The effort should be led by FDACS
- Should occur outside of the current CFWI HAT effort possibly as part of CUPcon

CFWI Modeling Schedule

Model Development: (August/2012 – Dec/2012)

- Datum correction USGS ECFT Groundwater Model
- Data revisions
- Agricultural use estimate revision
- General head boundary revision
- Miscellaneous improvement
- Recalibration (Nov 1 – Dec 31)

Model Application: (Dec/2012 – Feb/2013)

- Initial Model Runs 4 Scenarios (Jan/2013)
- Future Scenarios – EOP & 2035 (Feb/2013)

HAT Ongoing / Upcoming Activities

- Completion of the water budget assessment
- Recalibrate ECFT Model
- Re-run initial scenarios
- Finalize 2035 Water Use projections for model input in collaboration with the Water Supply Plan Team and FDACS
- Run future condition scenarios (EOP & 2035)

Questions?

