

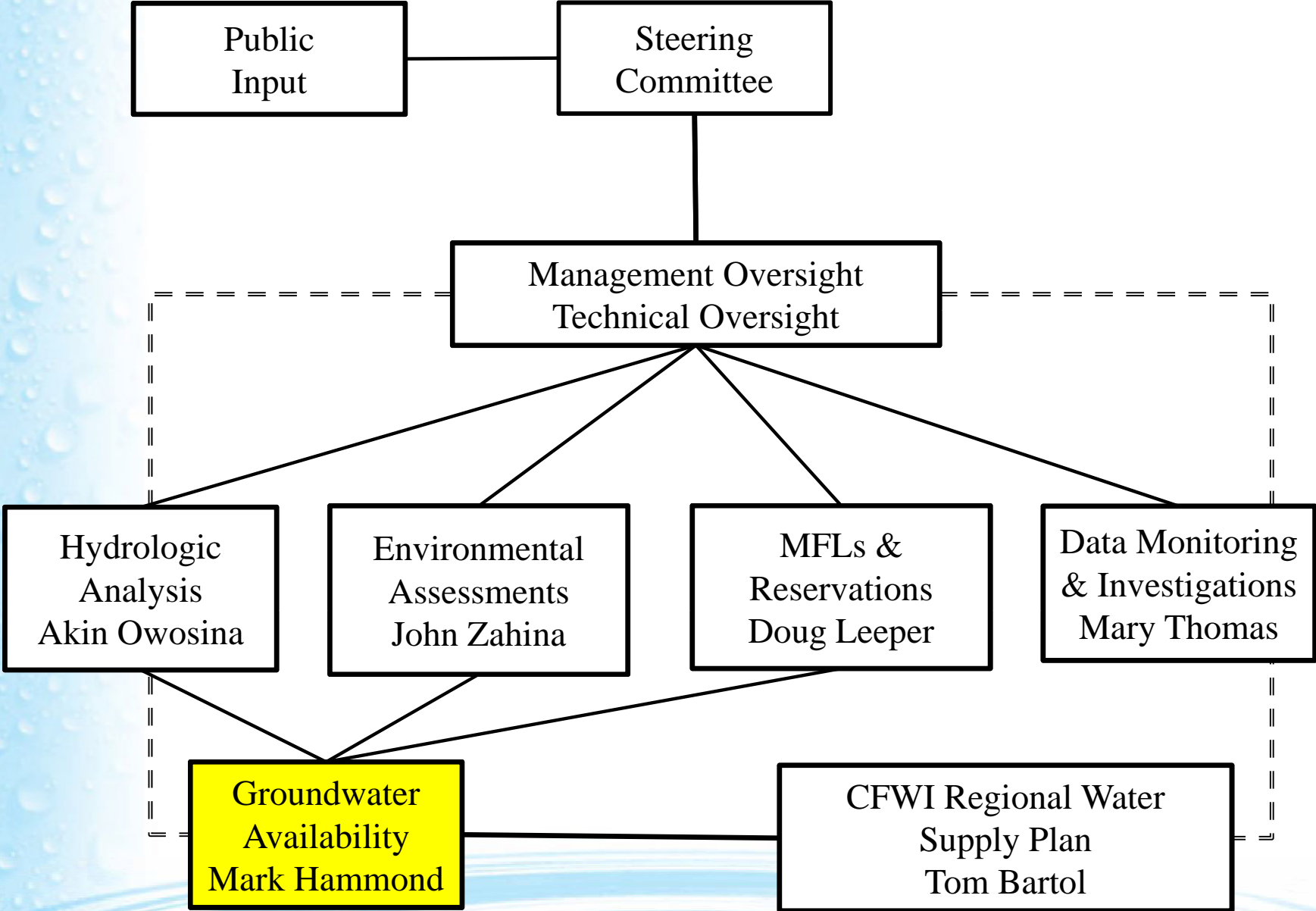
Groundwater Availability Team

Update for Steering Committee

November 9, 2012

www.cfwewater.com

Central Florida Water Initiative



Groundwater Availability

Team Members	
•Mark Hammond (SWFWMD)- Team Leader	
•Akin Owosina (SFWMD)	•Al Aikens (Utility)
•Chris Sweazy (SFWMD)	•David MacIntyre (Utility)
•Debbie Bradshaw (Utility)	•Doug Leeper (SWFWMD)
•Hal Wilkening (SJRWMD)	•Janet Llewellyn (FDEP)
•Jim Bays (Utility)	•Brian Wheeler (Utility)
•Mark Barcelo (SWFWMD)	•Kenneth Herd (SWFWMD)
•Tony Janicki (Utility)	•Shirley Denton (Utility)
•Tom Bartol (SJRWMD)	•Steven Memberg (SFWMD)

Steering Committee Scheduling Guidance



TECHNICAL WORK

Technical Oversight

Hydrologic Analysis

Environmental Measures

MFLs and Reservations

Data Monitoring & Investigations

Groundwater Availability

Regional Water Supply Planning

COMPLETE
DRAFT RWSP

Sept 30, 2013

November 9, 2012

GAT Objectives

- 1) Develop flowcharts describing the process to achieve the Team Goal
- 2) Review and understand the products and deliverables from the HAT, MFLT and EMT
- 3) Review and understand the water resource conditions within the CFWI area;
- 4) Provide the Steering Committee with planning level estimates of groundwater availability within the CFWI area under current and future conditions.

Critical Path

HAT

- Preliminary HAT model output (**January**)
- Regional planning level detail

EMT

- Evaluation measures (**February**)

MFLT

- Evaluation measures (**February**)

GAT (Coordination with MOC/SC)

- Preliminary groundwater assessment (**March**)
- Groundwater availability results (**May**)

RWSP

- Expanded Outline Draft RWSP (**May 2013**)
- Final Draft RWSP (**September 2013**)

Questions?

