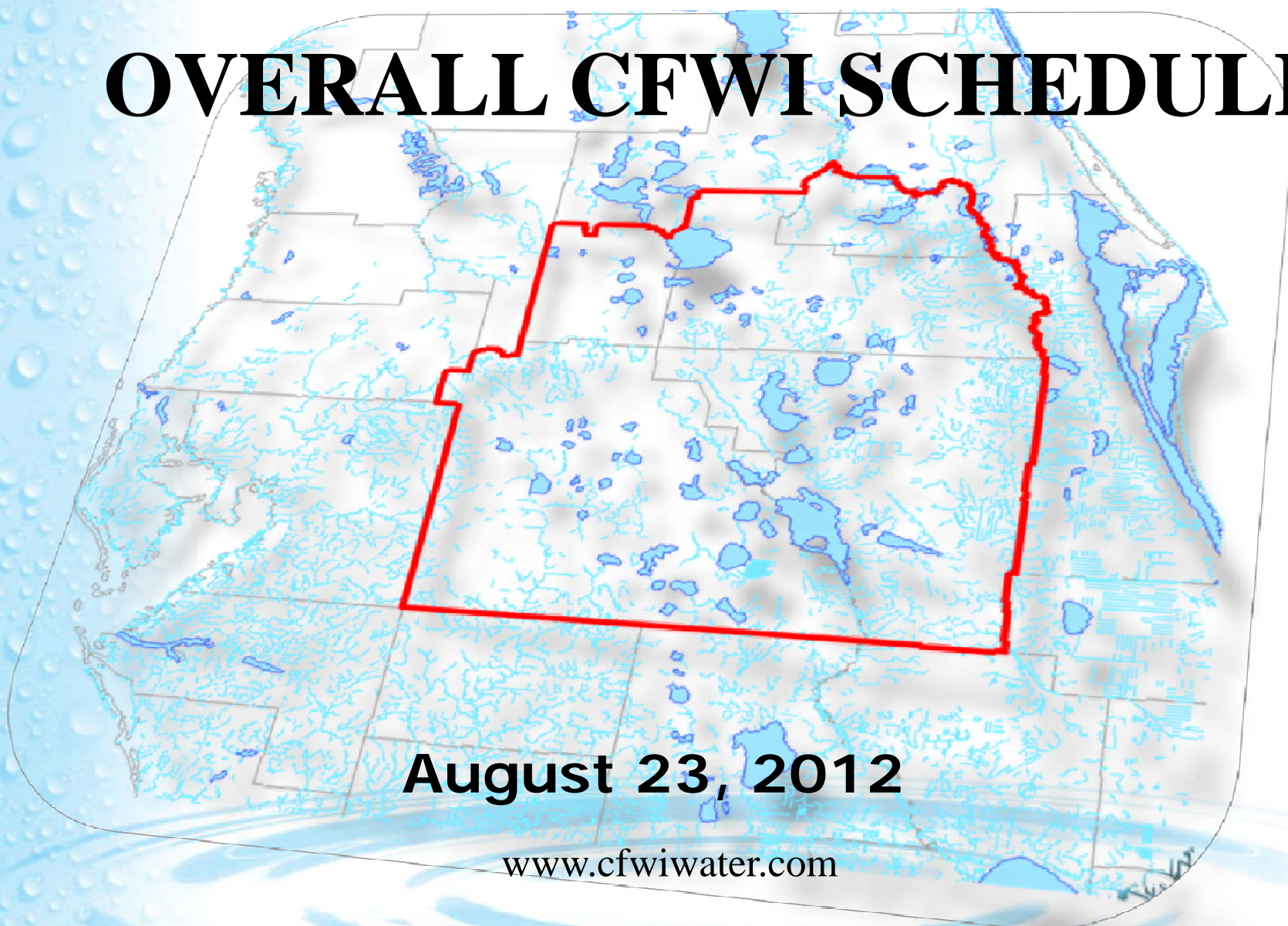


# Steering Committee Meeting

## OVERALL CFWI SCHEDULE

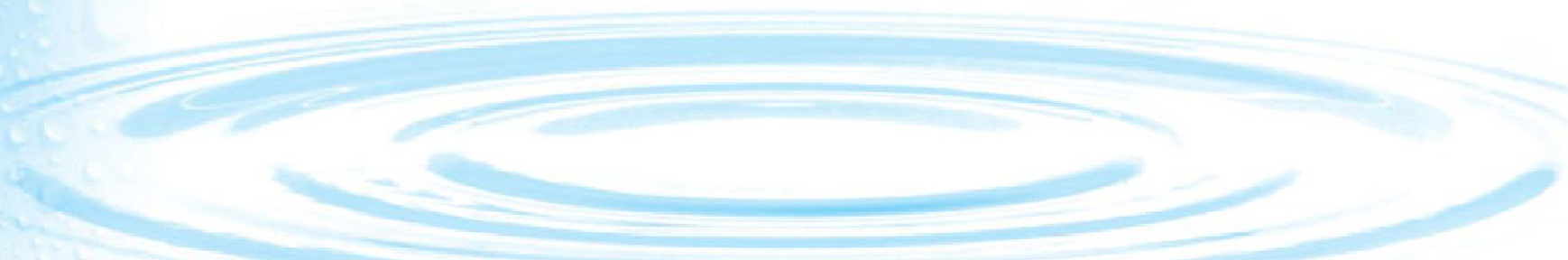


**August 23, 2012**

[www.cfwewater.com](http://www.cfwewater.com)

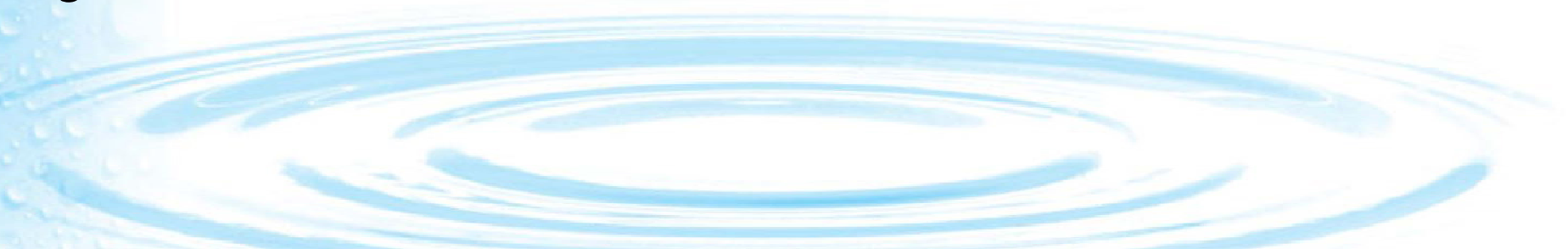
# CENTRAL FLORIDA WATER INITIATIVE

- A collaborative process to provide for more effective, consistent water resource planning, development and management in Central Florida
- An area encompassing the counties of Orange, Seminole, Polk, Osceola and Lake (south)



# Guiding Principles (1 of 3)

1. Identify the sustainable quantities of traditional groundwater sources available for water supply that can be used without causing unacceptable harm to the water resources and associated natural systems.



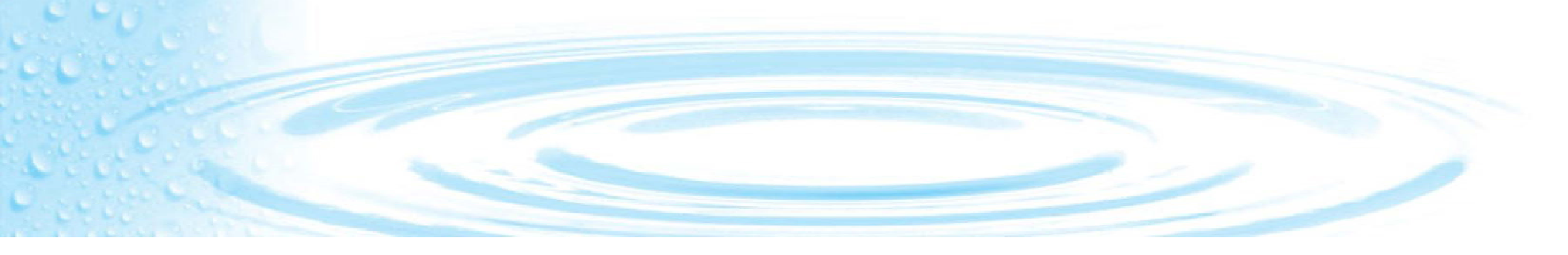


# Guiding Principles (2 of 3)

2. Develop strategies to meet water demands that are in excess of the sustainable yield of existing traditional groundwater sources.
  - optimizing the use of existing groundwater
  - implementing demand management
  - identifying alternative water supplies

# Guiding Principles (3 of 3)

3. Establish consistent rules and regulations for the three water management districts that meet the Collaborative Process Goals to implement the results of this Central Florida Water Initiative.

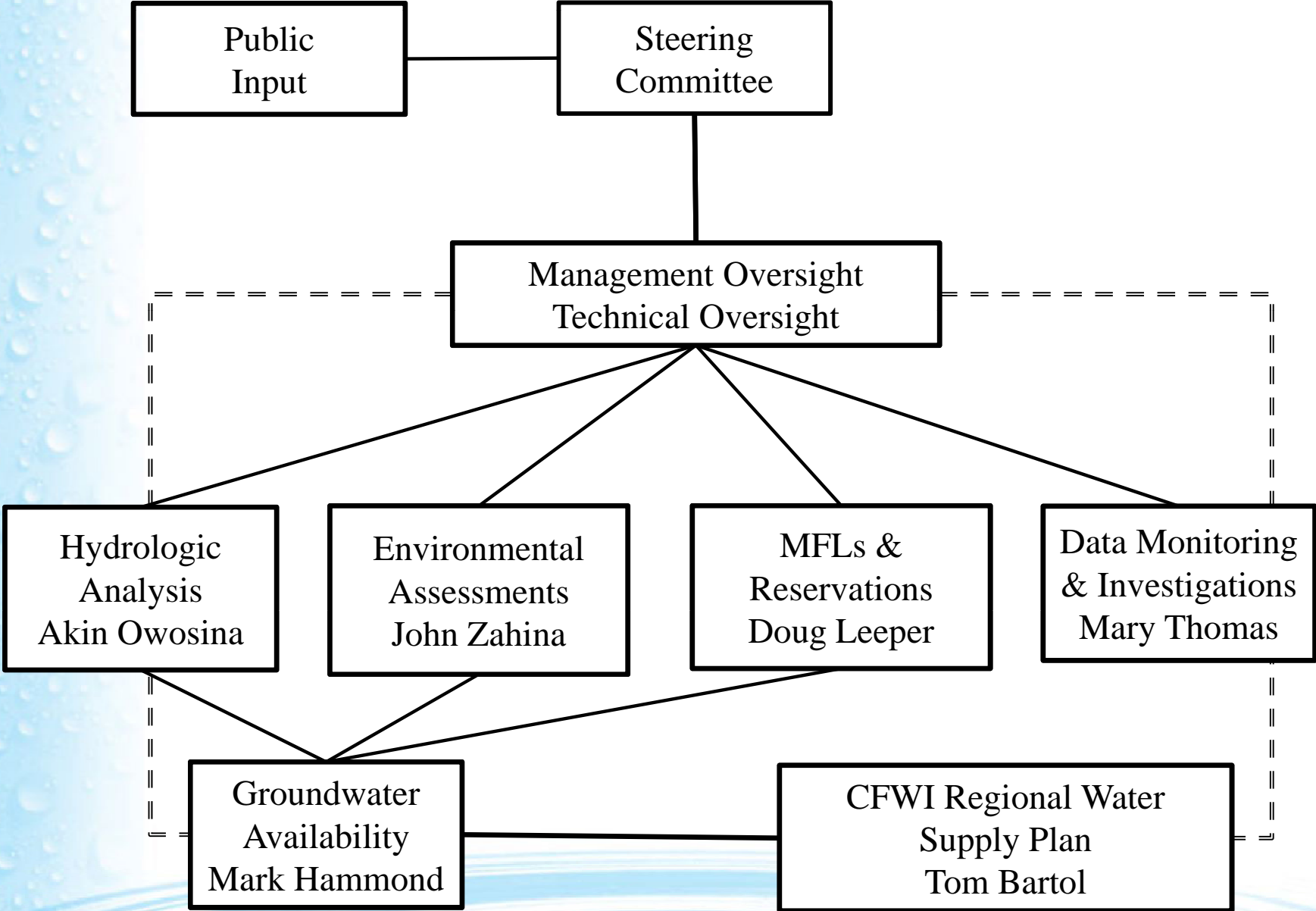


# Goals

1. One model
2. One uniform definition of harm
3. One reference condition
4. One process for permit reviews
5. One consistent process, where appropriate, to set MFLs and reservations
6. One coordinated recovery and prevention strategy

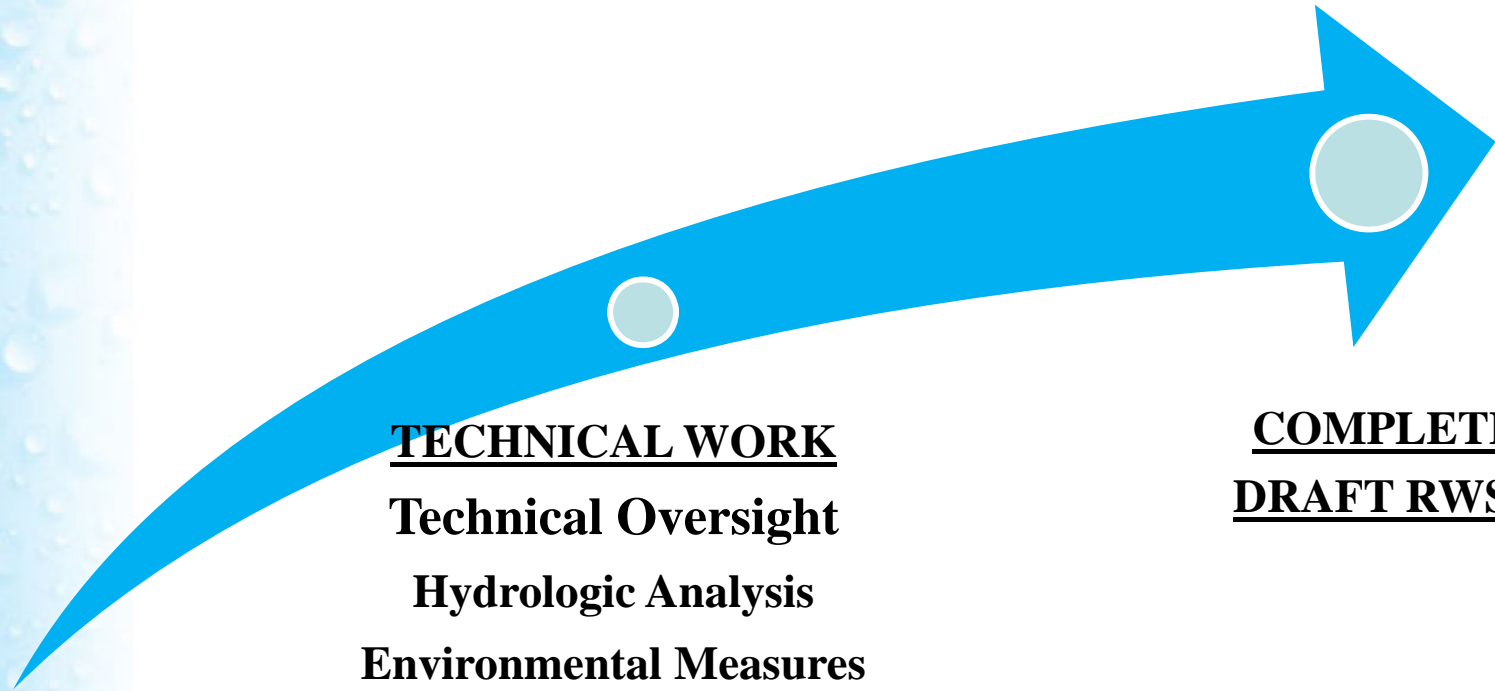
The process will provide flexibility for cases where Recovery Strategies have been adopted, such as for the Southern Water Use Caution Area in the SWFWMD.

# Central Florida Water Initiative





# Steering Committee Scheduling Guidance



**TECHNICAL WORK**

**Technical Oversight**

**Hydrologic Analysis**

**Environmental Measures**

**MFLs and Reservations**

**Data Monitoring & Investigations**

**Groundwater Availability**

**Regional Water Supply Planning**

**COMPLETE**  
**DRAFT RWSP**

**Sept 30, 2013**

**August 23, 2012**



## Critical Path

### HAT

- Preliminary USGS model output (April)
- Regional planning level detail

### EMT

- Evaluation measures (May)

### MFLT

- Evaluation measures (May)

### GAT (Coordination with MOC/SC)

- Preliminary groundwater assessment (June)
- Groundwater availability results (August)
- Regional planning level detail

### RWSP

- Expanded Outline Draft RWSP (August)
- Final Draft RWSP (December 12)

# Critical Path

## HAT

- Preliminary HAT model output (January)
- Regional planning level detail

## EMT

- Evaluation measures (February)

## MFLT

- Evaluation measures (February)

## GAT (Coordination with MOC/SC)

- Preliminary groundwater assessment (March)
- Groundwater availability results (May)
- Regional planning level detail

## RWSP

- Expanded Outline Draft RWSP (May 2013)
- Final Draft RWSP (September 2013)

# Summary

- Technical Work to be complete - Sept 2013
- Outstanding Issues
  - Agriculture water use
  - Model water budget
- Continue to work with MOC

**Questions?**

