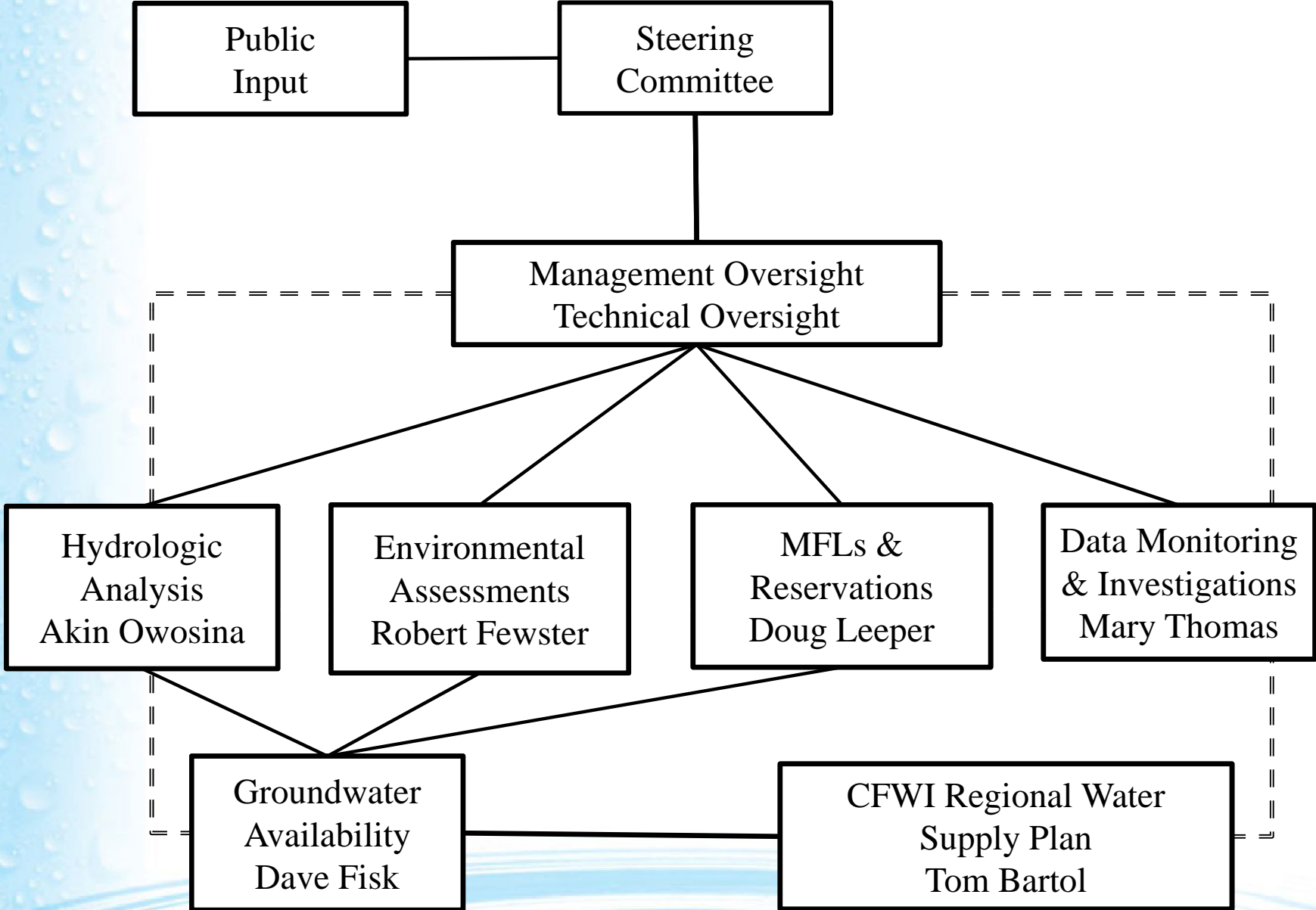


# Central Florida Water Initiative



# Steering Committee Scheduling Guidance

## TECHNICAL WORK

### \*Technical Oversight

- 1-Hydrologic Analysis
- 2-Environmental Measures
- 3- MFLs and Reservations
- 4- Data Monitoring & Investigations
- 5- Groundwater Availability
- 6- Regional Water Supply Planning

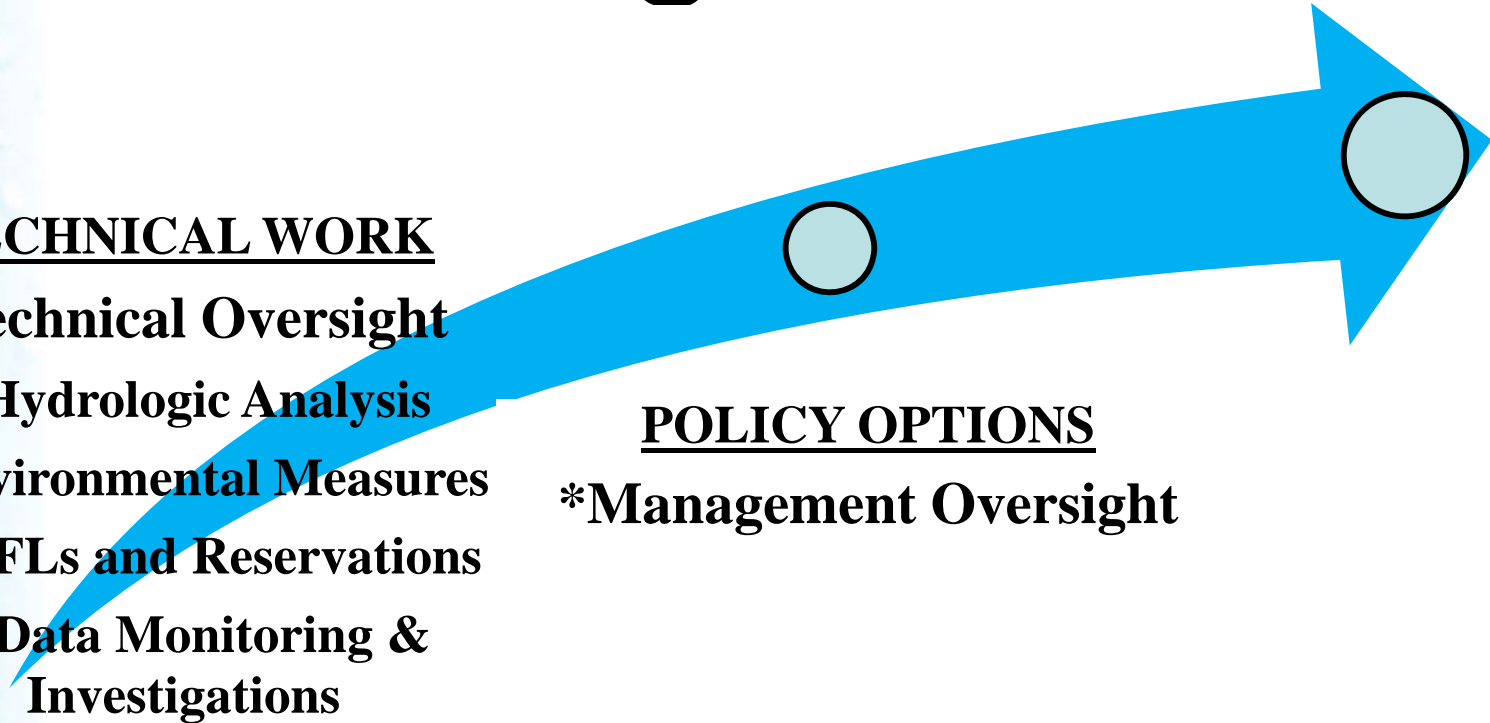
## POLICY OPTIONS

### \*Management Oversight

January 27, 2012

Dec 31, 2012

Dec 31, 2013



# Central Florida Water Initiative

| CFWI Guidance Document               |  | Start      | Complete   | Remaining Days to Complete | Comments  |
|--------------------------------------|--|------------|------------|----------------------------|---|
| Initiatives                          | Key Components   |            |            |                            |   |
| Hydrologic Analysis (A)              | Key Components Model Calibration (A1)  | 3/1/2011   | 9/30/2011  | COMPLETED                  | Completed 11/23/2011  |
|                                      | Technology Transfer Protocol (A1B)   | 11/10/2011 | 12/30/2011 | (23)                       | Being finalized; delay due to request by HAT to USGS; Jan 15 optimistic completion  |
|                                      | Statistical Trends in Hydrologic Data (A2)   | 3/1/2011   | 2/28/2012  | 35                         |   |
|                                      | USGS Project to Quantify Factors Affecting Groundwater and Lake Levels in the Central Florida Area (A3)  | 3/1/2011   | 6/30/2012  | 157                        |   |
|                                      | Initial Model Scenarios (A4)   | 3/1/2011   | 4/30/2012  | 97                         | Schedule slipping; evaluating degree to which it will affect overall CFWI schedule  |
|                                      | Documentation (A5)   | 3/1/2011   | 5/30/2012  | 127                        |   |
| Environmental Measures (B)           | Evaluate current conditions (B1)   | 3/1/2011   | 3/31/2012  | 68                         |   |
|                                      | Relate current conditions to output of hydrologic model (B2)   | 3/1/2011   | 6/30/2012  | 157                        |   |
| Minimum Flows and Levels "C"         | Review and understand the various approaches used by the WMDs to set MFLs/Reservations (C1)  | 6/22/2011  | 9/30/2011  | COMPLETED                  |   |
|                                      | Identify commonalities and differences in the approaches currently used to set criteria (C2)   | 6/22/2011  | 9/30/2011  | COMPLETED                  |   |
|                                      | Develop options for a standard methodology to establish MFLs/Reservations (C3)   | 9/30/2011  | 3/31/2012  | 68                         |   |
|                                      | Evaluate current peer review process of each WMD in order to develop options for a standard procedure to peer review MFLs and Reservations within the CFWI (C4a)                   | 6/22/2011  | 1/31/2012  | 8                          |   |
|                                      | Peer review the methods developed under C3 if appropriate (C4b)  | 2/28/2012  | 8/31/2012  | 218                        |   |
|                                      | Develop options for guidelines for implementing MFLs in the consumptive use permit program, planning efforts, and water shortage determinations where appropriate (C5)             | 4/30/2012  | 9/30/2012  | 247                        |   |
|                                      | Coordinate with the Environmental Measures and Hydrologic Assessment Teams to develop options for measures to evaluate MFLs and Reservation criteria in the model application (C6) | 1/1/2012   | 6/30/2012  | 157                        |   |
| Data Monitoring & Investigations (D) | Standard data inventory sheet (D1)   | 3/1/2011   | 31-Aug-11  | COMPLETED                  |   |
|                                      | Intra-and inter-agency investigation of other existing data (D2)   | 3/1/2011   | 31-Oct-11  | COMPLETED                  |   |
|                                      | Inventory Development (D3)   | 3/1/2011   | 31-Jan-12  | 8                          |   |
|                                      | Collaboration with other technical initiatives (D4)  | 3/1/2011   | 31-Dec-12  | 338                        |   |
| Groundwater Availability (E)         | Develop options for a Uniform Definition of Hydrologic Harm Caused by Hydrologic Change to Wetlands and Surface Waters (E1)  | 12/27/2011 | 10/31/2012 | 278                        |   |
|                                      | Evaluate Future Impacts to Wetlands and Surface Waters (E2)  | 5/1/2012   | 8/31/2012  | 218                        |   |
|                                      | Develop options for a Unified Process for the Environmental Review of CUP/WUPs (E3)  | 7/1/2012   | 8/31/2012  | 218                        |   |
|                                      | Model Simulations to Estimate Water Level Drawdown Due to Groundwater Withdrawals (E4)   | 7/1/2012   | 8/31/2012  | 218                        |   |
|                                      | Modeling Evaluation (E5)   | 9/1/2012   | 10/31/2012 | 278                        |   |
|                                      | Estimate of Groundwater Availability (E6)  | 11/1/2012  | 12/31/2012 | 338                        |   |
|                                      | Groundwater Availability Summary Report (E7)   |            |            |                            |   |
| CFWI Regional Water Supply Plan (F)  | Future phase activity  |            | 12/31/2013 | 698                        | Part of the Regional Water Supply Planning process for the CFWI; concepts being developed for Steering Committee decision |

# Central Florida Water Initiative

| CFWI Guidance Document  |   | Complete   | Comments   |
|-------------------------|---|------------|--|
| Initiatives             | Key Components  |            |  |
| Hydrologic Analysis (A) | Key Components Model Calibration (A1)   | 9/30/2011  | Completed 11/23/2011   |
|                         | Technology Transfer Protocol (A1B)  | 12/30/2011 | Being finalized; delay due to request by HAT to USGS; Jan 15 optimistic completion |
|                         | Statistical Trends in Hydrologic Data (A2)  | 2/28/2012  |  |
|                         | USGS Project to Quantify Factors Affecting Groundwater and Lake Levels in the Central Florida Area (A3) | 6/30/2012  |  |
|                         | Initial Model Scenarios (A4)  | 4/30/2012  | Schedule slipping; evaluating degree to which it will affect overall CFWI schedule |
|                         | Documentation (A5)  | 5/30/2012  |  |