

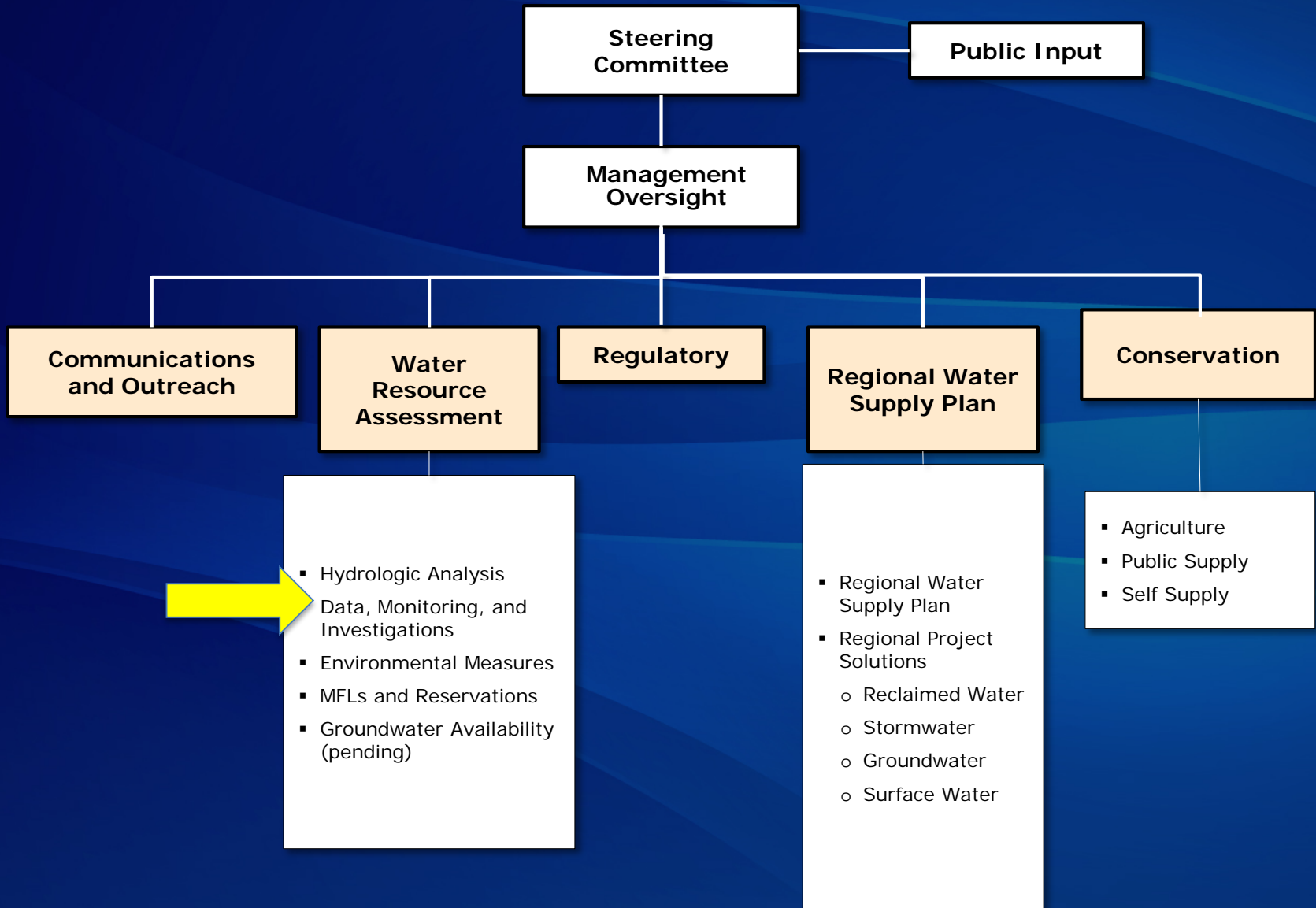
**Data, Monitoring and Investigations
Team (DMIT)**

**DMIT Hydrogeologic
Annual Work Plan
(FY2018-FY2020)
Follow-up Discussion**

**CFWI Steering Committee Meeting
April 13, 2018**



2020 Organizational Structure



DMIT/HAT/EMT/MFL Coordination

Sub-teams met in February and discussed:

- Status of monitoring site construction
- Evaluation of need for sites and site addition\removal
- Extension of construction schedule
- Available products (maps\spreadsheets\workplan)
- A plan for continuing coordination

Water Quality (WQ) Monitoring

- Where appropriate WQ is collected at some DMIT monitoring sites
- Approximately 50% of the DMIT non-wetland sites are monitored for water quality
- Parameters monitored typically include chlorides, TDS, specific conductivity, sulfates



Extension of DMIT Work Plan Schedule

- Recommendation for an additional 5-years (will end in FY2025)
- Recommendation based on a review of:
 - Number of remaining planned sites
 - Past construction history
 - Staffing levels
 - Anticipated site acquisition
 - Site work (Surveying, transects, mapping, instrumentation)
 - Revisiting of established wetland sites for first 5-year evaluation

FY2015-FY2025 DMIT Status

	Wetland Sites	Wetland SA	General SA/IA	UFA/APPZ	LFA
2015	0	0	2	3	1
2016	13	4	5	4	2
2017	9	7	7	7	3
2018	8	5	17	11	7
2019- 2025	77	77	51	19	25
Total:	107	93	82	44	38

Implementation Costs

Fiscal Year	Total Implementation Costs (in millions)
2015	\$0.55
2016	\$1.15
2017	\$2.86
2018¹	\$5.76
2019-2025 ²	\$27.38
Total:	\$37.70

¹Cost is budgeted but may be lower based on actual construction performed

²Cost is estimated for the seven-year period and subject to funding

Action Items

- DMIT requests approval of the revised DMIT construction schedule (construction through FY2025)
- DMIT requests approval of the DMIT Hydrogeologic Annual Work Plan for FY2018-FY2025

Questions?

<https://cfwiwater.com/data.html>



Backup slides



DMIT Summary

- **Initiated in 2011 as a CFWI Technical Team**
- **Consists of geologists, wetland scientists, and others**
- **Tasks**
 - Develop and maintain an inventory of sources of available hydrologic, environmental, and other pertinent data and investigations in the region
 - Data, Monitoring and Investigations Team CFWI Inventory (2014)
 - Identify areas of insufficient or potentially redundant data collection
 - Performed Gap Analysis (2013–2014)
 - CFWI Regional Monitoring Program: Summary Report (June 2014)
 - Establish minimum standards for future CFWI data collection, including data collected to meet regulatory requirements
 - CFWI Minimum Standards Document (2014)

DMIT Summary cont.

- **Tasks cont.**
 - Develop a web-based portal that enables users to access available data and investigation reports from the different sources responsible for collecting and producing this information in the CFWI
 - **DMIT Map Viewer**
 - Develop and implement a work plan for construction of additional monitoring sites
 - **DMIT Hydrogeologic Annual Work Plan**

