

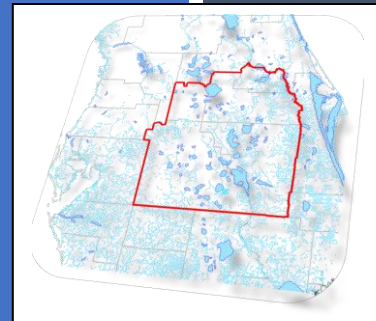


DMIT HYDROGEOLOGIC WORK PLAN FOR FY2018-FY2020

*Central Florida
Water Initiative*

This document is the product of the Data, Monitoring, and Investigations Team (DMIT) and represents an update to the DMIT 2016 Work Plan Update dated July 2016.

January 19, 2018



Executive Summary

The Central Florida Water Initiative (CFWI) is a planning-level effort to review existing and projected water use demands in a five-county region of Central Florida and requires coordination between three water management districts (WMDs); South Florida Water Management District (SFWMD), Southwest Florida Water Management District (SWFWMD) and St. Johns River Water Management District (SJRWMD). As part of the initial CFWI effort, the Data, Monitoring, and Investigations Team (DMIT) was tasked to ensure that available hydrologic, environmental, and other pertinent data collected throughout the region are identified, inventoried, and accessible to support the CFWI technical initiatives and CFWI regulatory activities.

This document, the *DMIT Hydrogeologic Work Plan Update for FY2018-FY2020* (2018 Work Plan), is the second update to the DMIT Hydrogeologic Work Plan for FY2015 – FY2020 (2015 Work Plan) and describes the progress since the DMIT Hydrogeologic Work Plan Update for FY2016-FY2020 (2016 Work Plan), as well as the implementation schedule for future work through fiscal year (FY) 2020. The status of items included in the Ongoing DMIT Activities section of the previous work plans are also updated in this report. This report supersedes the previously published work plans and serves as the working document for future activities. All documents and methodologies can be found at the CFWI website (www.cfwiwater.com).

Seventy-four wells were planned for construction in FY2017. A total of 20 wells were completed including 7 wetland surficial aquifer (SA), 5 general SA/intermediate aquifer (IA), 6 Upper Floridan aquifer (UFA), and 2 Lower Floridan aquifer (LFA) wells. The remaining wells were not constructed during FY2017 due to difficulties with site access authorization, contractor scheduling, adverse weather/Hurricane Irma and changes in site priorities. However, many of these wells are currently in-progress. In addition to the 20 wells, 9 wetland sites were also completed. Wells and wetland sites not completed in FY2017 will be incorporated into the FY2018 Work Plan as appropriate. A total of 66 wells are planned to be constructed during FY2018. This includes 21 wetland SA, 23 general SA/IA, 14 UFA/APPZ, and 8 LFA wells. A total of 24 wetland sites are planned for completion during FY2018. The estimated cost for DMIT construction for FY2018 is \$7.78 million dollars.

Contents

Executive Summary	i
Abbreviations and Acronyms	iii
1.0 Introduction	1
2.0 Status of DMIT Monitoring Site Construction.....	1
Figure 1: Status of DMIT Sites (November 2017).....	2
Figure 2: DMIT Site by Monitored Resource (November 2017)	Error! Bookmark not defined.
2.1 FY2017 Well Construction.....	4
2.2 Planned FY2018 Work Plan Well Construction	4
2.2.1 Wetland SA Wells.....	4
2.2.2 General SA/IA Wells.....	4
2.2.3 UFA/APPZ Wells	5
2.2.4 LFA Wells.....	5
2.3 FY2017 Wetland Transects	5
2.4 Planned FY2018-2020 Work Plan Wetland Transects.....	5
3.0 FY2018 Work Plan Funding	5
Table 1. Implementation Costs by Fiscal Year	5
4.0 Status of Other Action Items.....	6
5.0 Summary and Recommendations.....	7
6.0 Appendices.....	8
Appendix A: DMIT Site Status (November 2017).....	8

Abbreviations and Acronyms

APPZ – Avon Park Permeable Zone

CFWI – Central Florida Water Initiative

DMIT – Data, Monitoring, and Investigations Team

FY – Fiscal year

General SA/IA – Surficial and Intermediate aquifer wells supporting general monitoring

HAT – Hydrologic Assessment Team

LFA – Lower Floridan aquifer

Minimum Standards Document - Minimum Standards for Water Resource Data Collection, Site Establishment and Field Data Collection Protocols

SC – Steering Committee

SFWMD – South Florida Water Management District

SFWWMD – Southwest Florida Water Management District

SJRWMD – St. Johns River Water Management District

Summary Report - CFWI Regional Monitoring Program: Summary Report (June 2014)

Wetland SA - Wetland monitoring surficial aquifer wells

WMDs - Water management districts

UFA – Upper Floridan aquifer

2015 Work Plan - DMIT Hydrogeologic Work Plan for FY2015 – FY2020

2016 Work Plan - DMIT Hydrogeologic Work Plan Update for FY2016-FY2020

2018 Work Plan - DMIT Hydrogeologic Work Plan for FY2018–FY2020

1.0 Introduction

The Central Florida Water Initiative (CFWI) is a planning-level effort to review existing and projected water use demands in a five-county region of Central Florida and requires coordination between three water management districts (WMDs); South Florida Water Management District (SFWMD), Southwest Florida Water Management District (SWFWMD) and St. Johns River Water Management District (SJRWMD). As part of the initial CFWI effort, the Data, Monitoring, and Investigations Team (DMIT) was tasked to ensure that available hydrologic, environmental, and other pertinent data collected throughout the region are identified, inventoried, and accessible to support the CFWI technical initiatives and CFWI regulatory activities. With guidance from other committees and oversight from the Steering Committee (SC), DMIT summarized data collection findings and activities within the CFWI region and prepared the *CFWI Regional Monitoring Program: Summary Report (June 2014)* (Summary Report). Following the acceptance of the Summary Report, the SC provided additional guidance to DMIT to develop a work plan detailing an implementation strategy based on the Summary Report findings and minimum data collection standards. The annual workplans are structured based on fiscal years.

The initial work plan, *DMIT Hydrogeologic Work Plan for FY2015–FY2020* (2015 Work Plan), set forth construction and other data collection activities through FY2020. The objective of this plan was to establish a schedule for the construction and testing at existing and new data collection sites identified in the Summary Report. The work plan is updated on an annual basis and provides a tool to convey information to CFWI management and the SC to ensure data collection needs for the CFWI region are being met. Following the initial work plan, an updated work plan was approved in July 2016, entitled *DMIT Hydrogeologic Work Plan Update for FY2016-FY2020* (2016 Work Plan), that describes progress from the previous fiscal year.

This document, the *DMIT Hydrogeologic Work Plan Update for FY2018-FY2020* (2018 Work Plan), is the second update to the 2015 Work Plan and describes the progress since the 2016 Work Plan, as well as the implementation schedule for future work through FY2020. The status of items included in the Ongoing DMIT Activities section of the previous work plans are also updated in this report. Where necessary, any changes to monitoring site locations or frequencies are included. This report supersedes the previously published work plans and serves as the working document for future activities. All documents and methodologies can be found at the CFWI website (www.cfwiwater.com).

2.0 Status of DMIT Monitoring Site Construction

The location and status of all existing and proposed DMIT monitoring sites developed pursuant to the DMIT work plans are shown in [Figure 1](#). The water resources monitored at the sites are indicated in [Figure 2](#). Information about the status of each site is provided in [Appendix A](#).

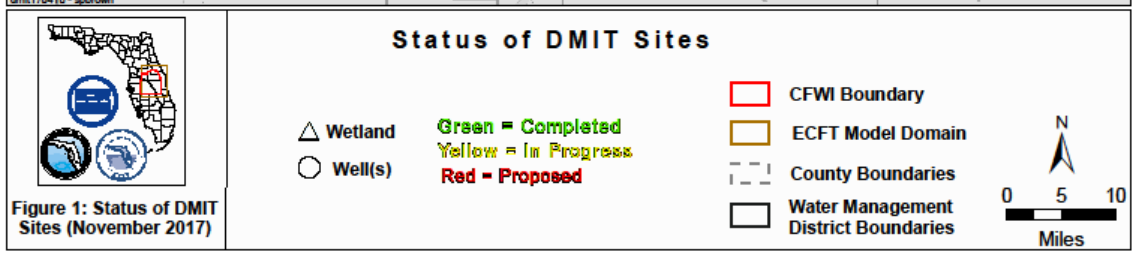
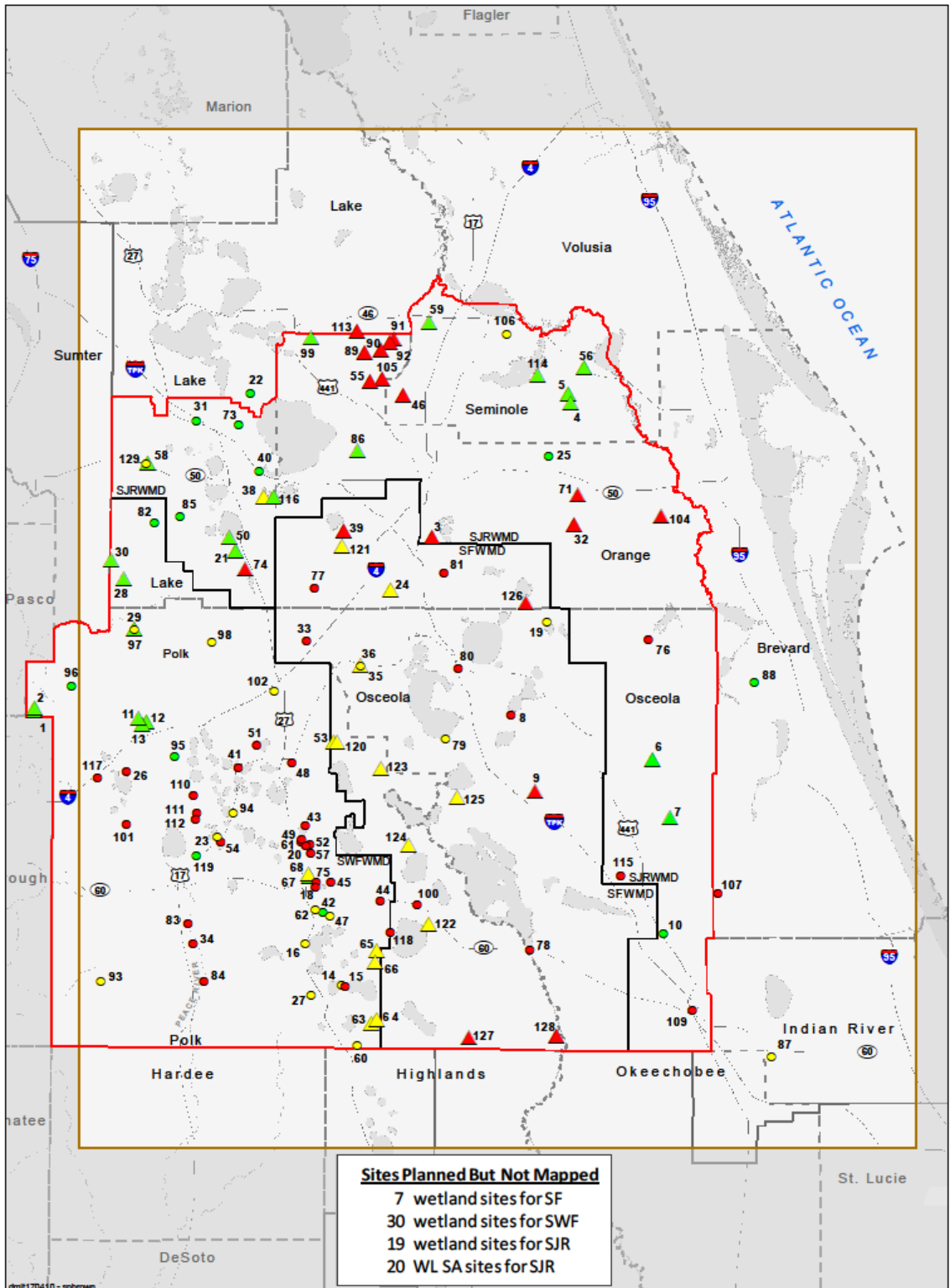
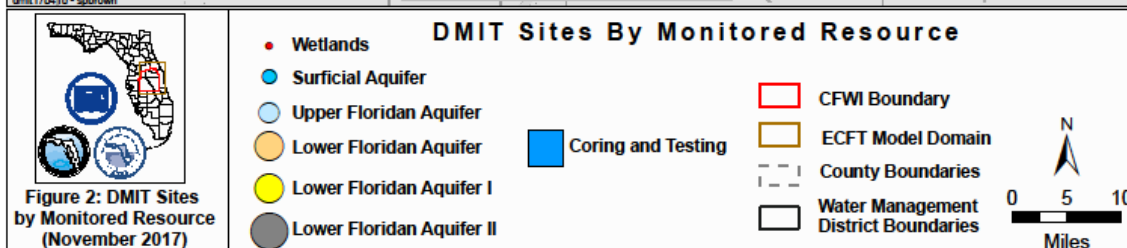
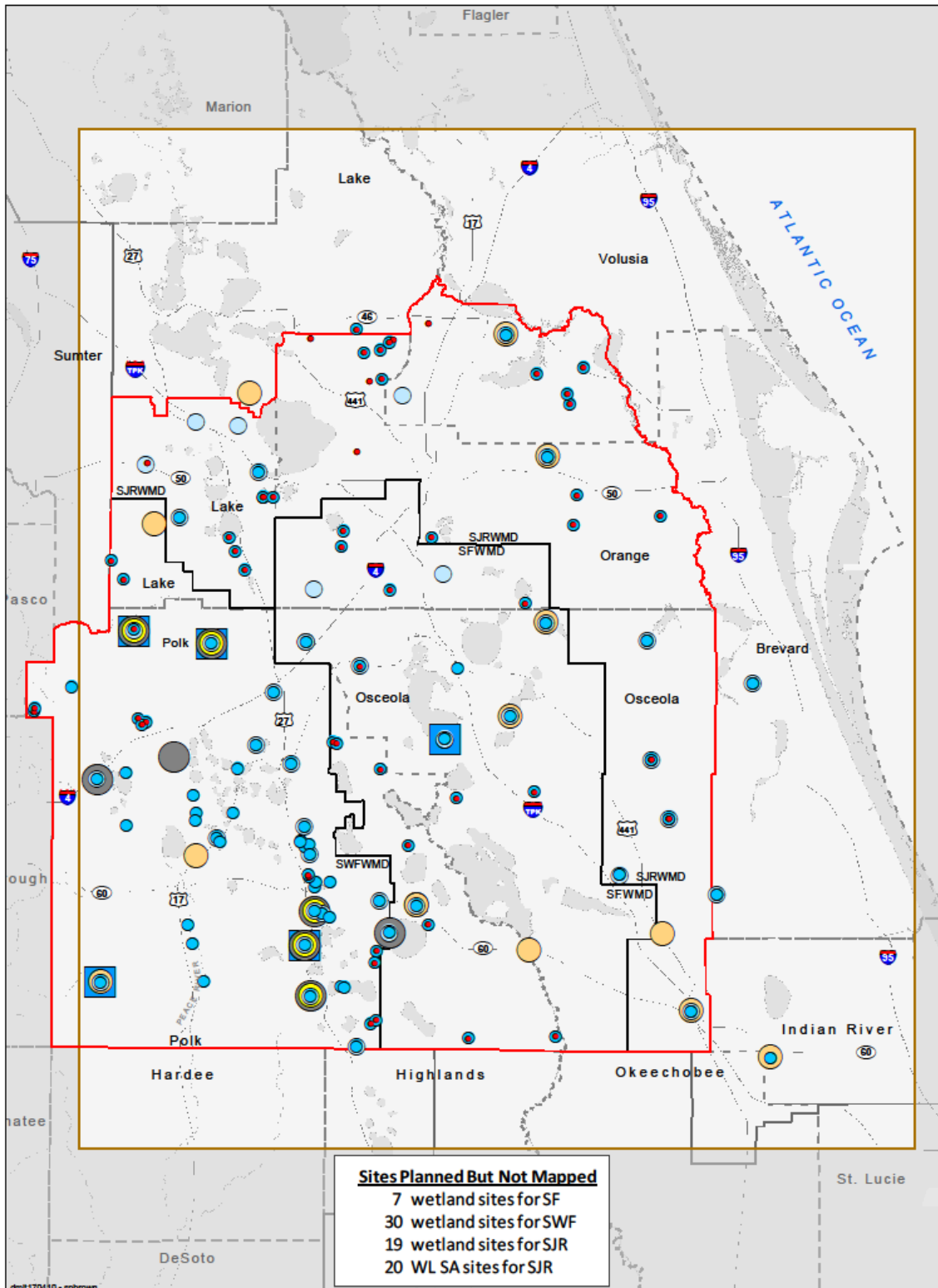


Figure 1: Status of DMIT Sites (November 2017)



2.1 FY2017 Well Construction

The Summary Report identified regional water resource monitoring data gaps in the CFWI area. The wells constructed pursuant to the work plans are designed to fill these data gaps. Seventy-four wells were planned for construction throughout the CFWI area in FY2017. Twenty wells were completed. Of these, 7 wetland SA, 5 general SA/IA, 6 UFA, and 2 LFA wells were completed. The remaining wells could not be completed due to difficulties with site access authorization, contractor scheduling, adverse weather/Hurricane Irma and changes in site priority. However, many of these wells are currently in-progress. Wells not completed in FY2017 will be incorporated into the FY2018 Workplan as appropriate. Following construction, all monitor wells were instrumented for water level monitoring and, where applicable, incorporated into water quality monitoring. The status of well completion progress can be found in [Figure 1](#) and [Appendix A](#).

2.2 Planned FY2018 Work Plan Well Construction

This section identifies wells to be completed under the FY2018 Work Plan. Planned well construction is described per well type for FY2018, FY2019 and 2020 in the following sections and on [Figures 1 and 2](#). A detailed list of wells, along with planned dates for completion and other information, can be found in [Appendix A](#). Placeholders have been included in the table for those wetland sites not yet identified. Those sites requiring exploratory coring prior to well construction will be listed in multiple years. Following construction, all well sites will be instrumented for long-term water level measurement and, where applicable, incorporated into existing water quality monitoring plans.

2.2.1 Wetland SA Wells

Construction of wetland SA wells is ongoing. These monitoring wells support wetland monitoring objectives. Prior to the planned construction, wetland sites are evaluated by wetland specialists from each WMD to ascertain meeting the Summary Report and minimum standard requirements, including whether an existing SA monitoring well can be used to support the wetland monitoring effort. Vegetative assessments and transects are completed for each of the wetland sites consistent with the data collection requirements of the Minimum Standards Document. Currently, construction of 21 wetland SA wells are planned for FY2018, and 61 wells are planned for FY2019 and FY2020.

2.2.2 General SA/IA Wells

Construction of general SA/IA wells is ongoing. These monitoring wells support existing monitoring of the Floridan Aquifer System. Wells included in this section do not include wetland wells. Currently, construction of 23 general SA/IA wells are planned in FY2018, and 42 wells are planned for FY2019 and FY2020.

2.2.3 UFA/APPZ Wells

Construction of UFA/APPZ wells is ongoing. These wells support regional water resource monitoring efforts. Generally, these sites are located near minimum flows and minimum levels lakes. Currently, construction of 14 UFA/APPZ wells are planned in FY2018, and 12 wells are planned for FY2019 and FY2020.

2.2.4 LFA Wells

Construction of LFA wells is ongoing. These wells support regional water resource monitoring efforts. Construction of 8 LFA wells are planned for FY2018, and 17 wells are planned for FY2019 and FY2020.

2.3 FY2017 Wetland Transects

Work to establish wetland monitoring sites is ongoing. Staff completed 9 of the targeted 26 wetland monitoring sites in FY2017. Work completed includes construction of SA monitoring wells (where needed), establishing transects and conducting the vegetative assessment work. A total of 22 wetland monitoring sites have been completed since implementation of DMIT with a total of 10 SA monitoring wells constructed to support wetland monitoring efforts. The remaining 12 wetland completed monitoring sites had existing SA monitoring wells that met the minimum standards for the wetland monitoring program.

2.4 Planned FY2018-2020 Work Plan Wetland Transects

Staff is working towards completion of the wetland monitoring program as identified in the 2014 Summary Report. A total of 85 wetland sites remain to be established during FY2018-FY2020 to meet the monitoring goals established in the 2014 Summary Report. A total of 24 wetland monitoring sites are scheduled for completion in FY2018. The remaining 61 wetland sites will be completed during FY2019-FY2020.

3.0 FY2018 Work Plan Funding

Funding for planned sites is dependent on approvals and priorities for each WMD and varies for each fiscal year. A breakdown of the current and estimated funding to complete the planned well construction is included in [Table 1](#). Total implementation costs are a combination of construction, real estate and consulting costs. Salaries from WMD staff efforts is not included in the costs.

Table 1: Implementation Costs by Fiscal Year

Fiscal Year	Total Implementation Costs (in millions)
2015	\$0.55
2016	\$2.04
2017	\$2.54
2018	\$7.78
2019-2020 (estimated)	\$17.99
Total	\$30.90

4.0 Status of Other Action Items

Action Item	Status
Update and expand the number of sources in the current Well Data Inventory created in 2014.	The update of the Well Data Inventory database and figure was completed in December 2017. The updated table and map can be found at the CFWI website and will be updated annually.
Complete a GIS analysis and field verification process to verify the locations of potential SA monitoring sites for pairing with existing UFA stations – scheduled to start in FY2017.	The process was started by all WMDs in FY2017 and has been completed. Existing UFA well sites that did not have a SA well within 1,000 feet of the UFA well were added to the well construction table as appropriate.
Identify and acquire legal access to future monitoring locations.	This task is ongoing. Improvements have been made in the efficiency and process of obtaining access, particularly with state lands.
Facilitate coordination of new information on aquifer characteristics to the Hydrologic Assessment Team (HAT) for model calibration.	DMIT met with HAT and discussed the data needs for aquifer characteristics and frequency. HAT instructed DMIT to provide updates on any new data as they become available. Further discussions are planned for FY2018 to determine a consistent process across WMDs.
Develop and update a uniform electronic database for storing field reports and digital media associated with each wetland site.	The creation of an electronic database and incorporating data into the forms for uploading for all WMDs are ongoing. Development of a template for the data collection forms will be completed by the end of 2017. Development of a common database between the Districts that will be available on the CFWI website will be completed by the end of 2018.
Update the annual work plan to report progress of ongoing activities, changes in	The work plan is updated annually and includes changes in construction activities

construction activities and costs to the MOC and SC.	and costs. The next update will be completed in December 2018.
Provide other support services to the CFWI effort as requested.	DMIT continues to provide support to other entities as needed.

Several action items were identified in the FY2016 Work Plan in the Ongoing DMIT Activities section. The status and plan for continuing work on these items is as follows:

5.0 Summary and Recommendations

Seventy-four wells were planned for construction in FY2017. A total of 20 wells, including 7 wetland SA, 5 general SA/IA, 6 UFA, and 2 LFA wells, were completed in FY2017. The remainder of the wells were not constructed due to difficulties with site access authorization, contractor scheduling, adverse weather/Hurricane Irma and changes in site priorities. However, many of these wells are currently in-progress. In addition to the 21 wells, 9 wetland sites were completed. Wells and wetland sites not completed in FY2017 will be incorporated into the FY2018 Workplan as appropriate. A total of 66 wells are planned for construction during FY2018. This includes 21 wetland SA, 23 general SA/IA, 14 UFA/APPZ, and 8 LFA wells. A total of 24 wetland sites are planned to be completed during FY2018. The estimated cost for DMIT construction for FY2018 is \$7.78 million dollars.

DMIT updated the well inventory list for all District, state agency, county, city, and permittee wells within the CFWI area. As requested by the HAT, the DMIT assessed existing UFA well sites within CFWI and added SA wells to the DMIT well construction list for those sites that did not have another SA well within a 1,000-foot radius. Those sites requiring SA monitor well installation have been included in the 2018 Work Plan. Site acquisition continued throughout FY2017. Development of a new wetlands electronic database is ongoing and completion is anticipated in FY2018. An Excel form was completed and the WMDs will be uploading wetland data following the new process. Once completed, the database will be available on the CFWI website.

It is recommended that an assessment be done at the end of FY2018 to evaluate plans for construction of remaining wells for FY2019 and FY2020.

6.0 Appendices

Appendix A: DMIT Site Status (November 2017)

[Blue - Complete, Brown - In Progress, Red - Proposed, Yellow - Deleted]

DMIT Site Status (October 2017) [Blue - Complete, Brown - In Progress, Red - Proposed, Yellow - Deleted]						
ID	Site Name	WMD	Site Type	Estimated Construction FY	Number New Well(s)	Well Type(s)
1	Alston Bay	SWF	Wetlands	2016	1	1 SA
2	Alston New Cypress	SWF	Wetlands	2017	1	1 SA
3	Bay Lake	SJR	Wetlands	2019	1	1 SA
4	Big-Little Econ State forested - slough wetland	SJR	Wetlands	2017	1	1 SA
5	Big-Little Econ State forested - small isolated	SJR	Wetlands	2017	1	1 SA
6	Bull Creek WMA-North Wetland	SJR	Wetlands/WL/WQ	2016	3	Core, 1 SA, 1 IA, 1 UFA
7	Bull Creek WMA-South Wetland (SJ-JI)	SJR	Wetlands/WL/WQ	2016	3	1 SA, 1 IA, 1 UFA
8	C-33	SF	WL	2018 - 2020	4	1 SA, 2 UFA, 1 LFA
9	Camp Lonesome	SF	Wetlands	2020	1	1 SA
10	Escape Ranch	SJR	WL/WQ	2017	1	Core, 1 LFA

11	City of Lakeland Wellfield G	SWF	Wetlands	2016	1	1 SA
12	City of Lakeland Wellfield J	SWF	Wetlands	2016	1	1 SA
13	City of Lakeland Wellfield K	SWF	Wetlands	2016	1	1 SA
14	Clinch Lake	SWF	WL	2018	1	1 SA
15	Coley Deep	SWF	WL	2020	1	1 SA
16	Crooked Lake	SWF	WL/WQ	2017	4	1 SA, 1 UFA, 1 LFA I, 2 LFA II, 1 Temp LFA II
17	Crooked Lake (Orange Co)	SJR	Wetlands	2017	0	N/A
18	Crystal Lake	SWF	WL	2018	1	1 SA
19	Deseret Ranch/Lk Myrtle	SF	WL	2018	4	1 UFA; 1 LFA, 1 SA; 1 IA
20	Dinner Lake	SWF	WL	2018	1	1 SA
21	Dixie Lake (SJ-HO) - Lake Louisa State Park	SJR	Wetlands	2017	1	1 SA
22	Duda-Whittle	SJR	WL/WQ	2015	1	Core, 1 LFA
23	Eagle Lake	SWF	WL	2018	2	1 SA, 1 UFA
24	East Pine Island - Shingle Creek Basin	SF	Wetlands	2018	1	1 SA, rainfall, wetlands survey
25	Econ Sandhills	SJR	WL/WQ	2015	5	1 SA, 1 IA, 1 UFA, 1 APPZ, 1 LFA, Core
26	Fish Lake Deep NR Lakeland	SWF	WL	2020	1	1 SA
27	Frostproof	SWF	WL	2018	4	1 SA, 1 UFA, 1 LFA I, 1 LFA II, 1 Temp LFA II
28	Green Swamp 4	SWF	Wetlands	2016	1	1 SA
29	Green Swamp 7	SWF	Wetlands	2016	1	1 SA
30	Green Swamp Bay	SWF	Wetlands	2016	1	1 SA

31	Groveland Sunshine Water Plant	SJR	WL/WQ	2015	1	1 UFA, Core
32	Hal Scott Preserve - floodplain	SJR	Wetlands	2019	1	1 SA
33	HH-2-IC	SF	WL	2018 - 2020	4	1 SA, 2 UFA, 1 LFA
34	Homeland DEP 9	SWF	WL	2020	1	1 SA
35	Intercession City	SF	Wetlands	2018	1	1 SA
36	Intercession City - UFA monitoring start	SF	WL	2018	1	1 UFA
37	Island Lake	SJR	Wetlands	2017	0	N/A
38	Johns Lake - Scrub Point Preserve (Lake County)	SJR	WL/WQ	2017	2	1 UFA, 1 LFA
39	Keene's Pt Park	SF	Wetlands	2020	1	1 SA
40	Turnpike: L-0199	SJR	WL/WQ	2017	2	1 SA, 1 UFA
41	Lake Alfred Deep at Lake Alfred	SWF	WL	2020	1	1 SA
42	Lake Amoret	SWF	WL	2017	2	1 SA, 1 UFA
43	Lake Annie	SWF	WL	2019	2	1 SA, 1 UFA
44	Lake Aurora	SWF	WL	2018	2	1 SA, 1 UFA
45	Lake Bonnie	SWF	WL	2020	1	1 SA
46	Lake Brantley	SJR	MFL	2018	1	1 UFA
47	Lake Easy	SWF	WL	2018	1	1 SA
48	Lake Eva	SWF	WL	2019	2	1 SA, 1 UFA
49	Lake Lee	SWF	WL	2019	1	1 SA
50	Lake Louisa State Park (SJ-JB)	SJR	Wetlands	2017	1	1 SA
51	Lake Lowery	SWF	WL	2019	2	1 SA, 1 UFA
52	Lake Mabel	SWF	WL	2019	1	1 SA

53	Lake Marion Creek	SF	Wetlands	2018	1	1 SA
54	Lake McLeod	SWF	WL	2018	1	1 SA
55	Wekiva Springs State Park - Lake Prevatt	SJR	Wetlands	2019	1	N/A
56	Lake Proctor	SJR	Wetlands	2016	1	1 SA
57	Lake Starr	SWF	WL	2018	2	1 SA, 1 UFA
58	Lake Sunset	SJR	Wetlands	2019	1	1 UFA
59	Lake Sylvan	SJR	Wetlands/MFL	2016	0	N/A
60	Lake Trout	SWF	WL	2018	2	1 SA, 1 UFA
61	Lake Venus	SWF	WL	2019	1	1 SA
62	Lake Wales (formerly Waverly)	SWF	WL/WQ	2018	4	1 SA, 1 UFA, 1 LFA I, 1 LFA II, 1 Temp LFA II
63	Lake Wales Ridge State Forest Arbuckle 1	SWF	Wetlands	2018	1	1 SA
64	Lake Wales Ridge State Forest Arbuckle 2	SWF	Wetlands	2018	1	1 SA
65	Lake Wales Ridge State Forest Walk in the Water 1	SWF	Wetlands	2018	1	1 SA
66	Lake Wales Ridge State Forest Walk in the Water 2	SWF	Wetlands	2018	1	1 SA
67	Lake Wales Ridge Wildlife and Environmental Area Mountain Lake Cutoff 1	SWF	Wetlands	2017	1	1 SA
68	Lake Wales Ridge Wildlife and Environmental Area Mountain Lake Cutoff 2	SWF	Wetlands	2018	1	1 SA

69	Lake Wales Ridge Wildlife and Environmental Area Mountain Lake Cutoff 3	SWF	Wetlands	2017	0	1 SA
70	Lake Wales Ridge Wildlife and Environmental Area Mountain Lake Cutoff 4	SWF	Wetlands	2017	0	1 SA
71	Long Branch	SJR	Wetlands	2019	1	1 SA
72	LW4P	SWF	WL	2018 - 2020	-	1 SA
73	Minneola	SJR	WL/WQ	2016	1	1 UFA
74	N Boggy Marsh	SJR	Wetlands/MFL	2019	1	1 SA
75	North Lake Wales	SWF	WL	2018	1	1 SA
77	ORF-60	SF	WL	2018 - 2020	1	1 UFA
78	OSF-52	SF	WL	2018	1	1 LFA
79	OSF-53 - rehabilitation	SF	WL	2018	4	1 APPZ; 1 UFA; 2 SA (LFA core-hole and testing)
80	OSF-70 - St Cloud	SF	WL	2018 - 2020	0	Existing SA
81	OUC - Air 19	SF	WL	2019	1	1 UFA
82	Pasture Reserve	SJR	WL/WQ	2015	1	1 LFA
83	Peace River at Bartow	SWF	WL	2020	1	1 SA

84	Peace River at Fort Meade	SWF	WL	2020	1	1 SA
85	Pine Island /SJR	SJR	WL/WQ	2017	2	1 SA, 1 UFA
86	Praire Lake (SJ-GA)	SJR	Wetlands	2017	0	Existing SA
87	Prince Parcel	SJR	WL/WQ	2016	2	1 SA, 1 LFA
88	River Lakes Cons Area	SJR	WL/WQ	2016	3	1 SA, 1 IA, 1 UFA
89	Rock Springs Run "(Orange County Parks) - Spring Run"	SJR	Wetlands	2019	1	1 SA
90	Rock Springs Run State Reserve - forested strand	SJR	Wetlands	2019	1	1 SA
91	Rock Springs Run State Reserve - isolated forest	SJR	Wetlands	2019	1	wetland only
92	Rock Springs Run State Reserve - isolated marsh	SJR	Wetlands	2019	1	1 SA
93	ROMP 46 - Baird	SWF	WL/WQ	2020	4	1 SA, 2 UFA, 1 LFA, Coring/ Testing
94	ROMP 73 - Winterhaven	SWF	WL	2018	1	1 SA
95	ROMP 75 - Auburndale	SWF	WL/WQ	2016	1	1 LFA II
96	ROMP 87 - Green Swamp	SWF	WL	2017	1	1 SA
97	ROMP 88 - Rock Ridge (Green Swamp West)	SWF	WL/WQ	2017	2	1 UFA, 1 LFA I, 1 LFA II, Coring/ Testing

98	ROMP 88.5 - Northeast Polk (formerly Green Swamp East)	SWF	WL	2019	4	1 SA, 1 UFA, 1 LFA I, 1 LFA II, Coring/Testing
99	Round Lake	SJR	Wetlands	2017	0	wetland only
100	S.R. 60 near Lake Weo & Rosilie	SF	WL	2018 - 2020	4	1 SA, 1 UFA, 2 LFA
101	Sanlon Ranch	SWF	WL	2020	1	1 SA
102	Thornhill Deep Near Davenport	SWF	WL	2018	2	1 SA, 1 UFA
103	Tosohatchee WMA - isolated marsh	SJR	Wetlands	2018 - 2020	0	1 SA
104	Tosohatchee WMA - large isolated forested wetland	SJR	Wetlands	2019	1	1 SA
105	Wekiva Springs State Park - Wekiva River Swamp	SJR	Wetlands	2019	1	1 SA
106	West of Lake Jesup	SJR	WL/WQ	2017	3	Core / 1 SA, 1 UFA, 1 LFA
107	Wolf Creek Ranch CA	SJR	WL/WQ	2018	3	Core / 1 SA, 1 IA, 1 UFA
108	World Gateway	SF	Wetlands	2016	0	1 SA
109	Yeehaw Junction	SJR	WL/WQ	2018	4	Core / 1 SA, 1 IA, 1 UFA, 1 LFA
110	Wetland Well REG	SWF	WL	2020	1	1 SA
111	Wetland Well REG	SWF	WL	2020	1	1 SA

112	Wetland Well REG	SWF	WL	2020	1	1 SA
113	Wekiva Springs State Park - Neighborhood Lake	SJR	Wetlands	2019	1	1 SA
114	Lake Jesup Conservation Area - Isolated marsh	SJR	Wetlands	2017	1	1 SA
115	Three Lakes WMA	SJR	WL/WQ	2018	4	Core, 1 SA, 1 IA, 1 UFA, 1 LFA
116	Johns Lake - Scrub Point Preserve (Lake County) Wetland	SJR	Wetlands	2017	1	1 SA
117	West Polk	SWF	WL/WQ	2018	3	Core, 1 SA, 1 UFA, 1 LFA II, 1 Temp LFA II
118	SE Wellfield	SWF	WL	2018	3	Core, 1 SA, 1 UFA, 1 LFA II, 1 Temp LFA II
119	CRWPF (Bartow)	SWF	WL	2017	1	Core, 1 LFA
120	Snell Creek	SF	Wetlands	2018	1	1 SA
121	Tibet Butler	SF	Wetlands	2018	1	1 SA
122	Walk in the Water	SF	Wetlands	2019	1	1 SA
123	London Creek	SF	Wetlands	2019	1	1 SA
124	Hatchineha	SF	Wetlands	2019	1	1 SA

125	Garnder Cobb	SF	Wetlands	2019	1	1 SA
126	Moss Park/Split Oak	SF	Wetlands	2020	1	1 SA
127	Bombing Range	SF	Wetlands	2020	1	1 SA
128	Okeechobee Plain	SF	Wetlands	2020	1	1 SA
	Unnamed Wetland Placeholders	SWF	Wetlands	2018	16	16 SA

DRAFT