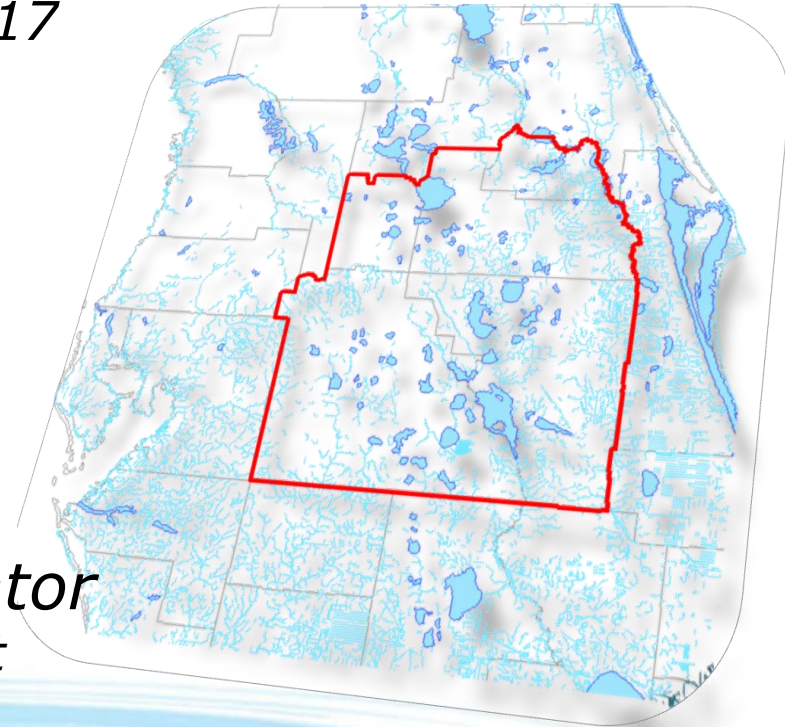


Data Monitoring and Investigations Team Update

*CFWI Steering Committee Meeting
April 14, 2017*

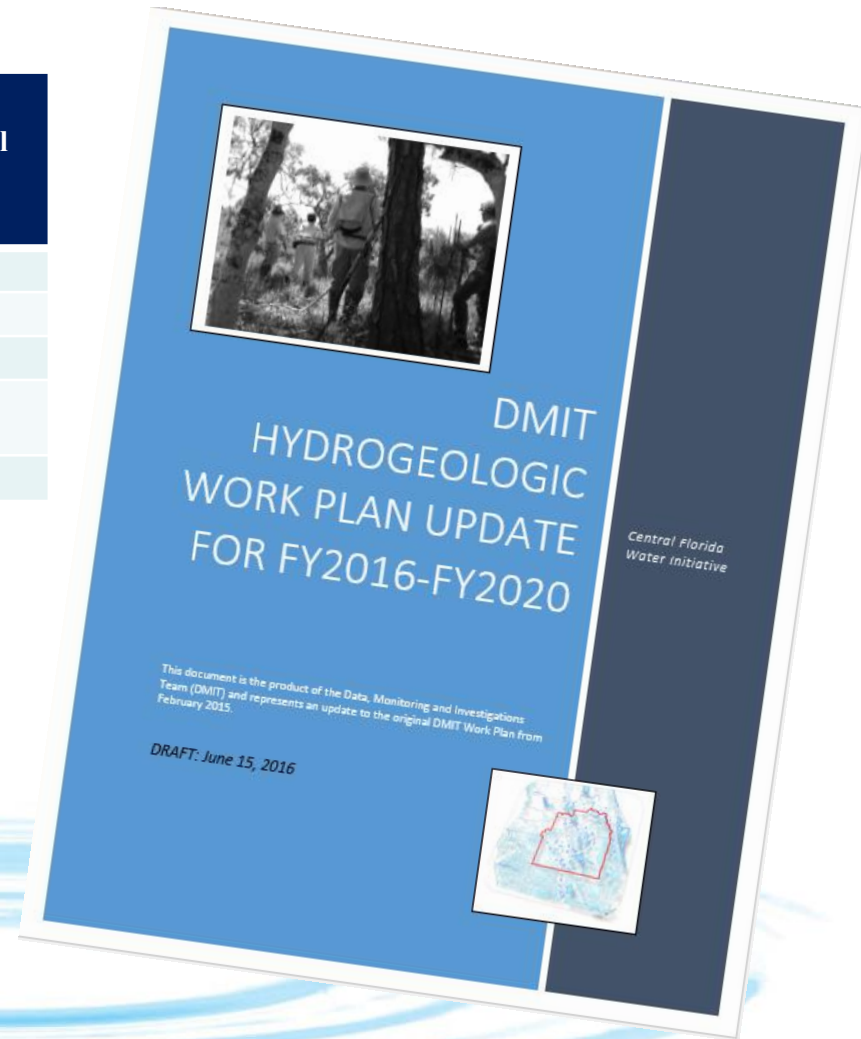


Dwight Jenkins Esq., P.G.
Water Supply Planning Coordinator
St. Johns River Water Management District
djenkins@sjrwmd.com

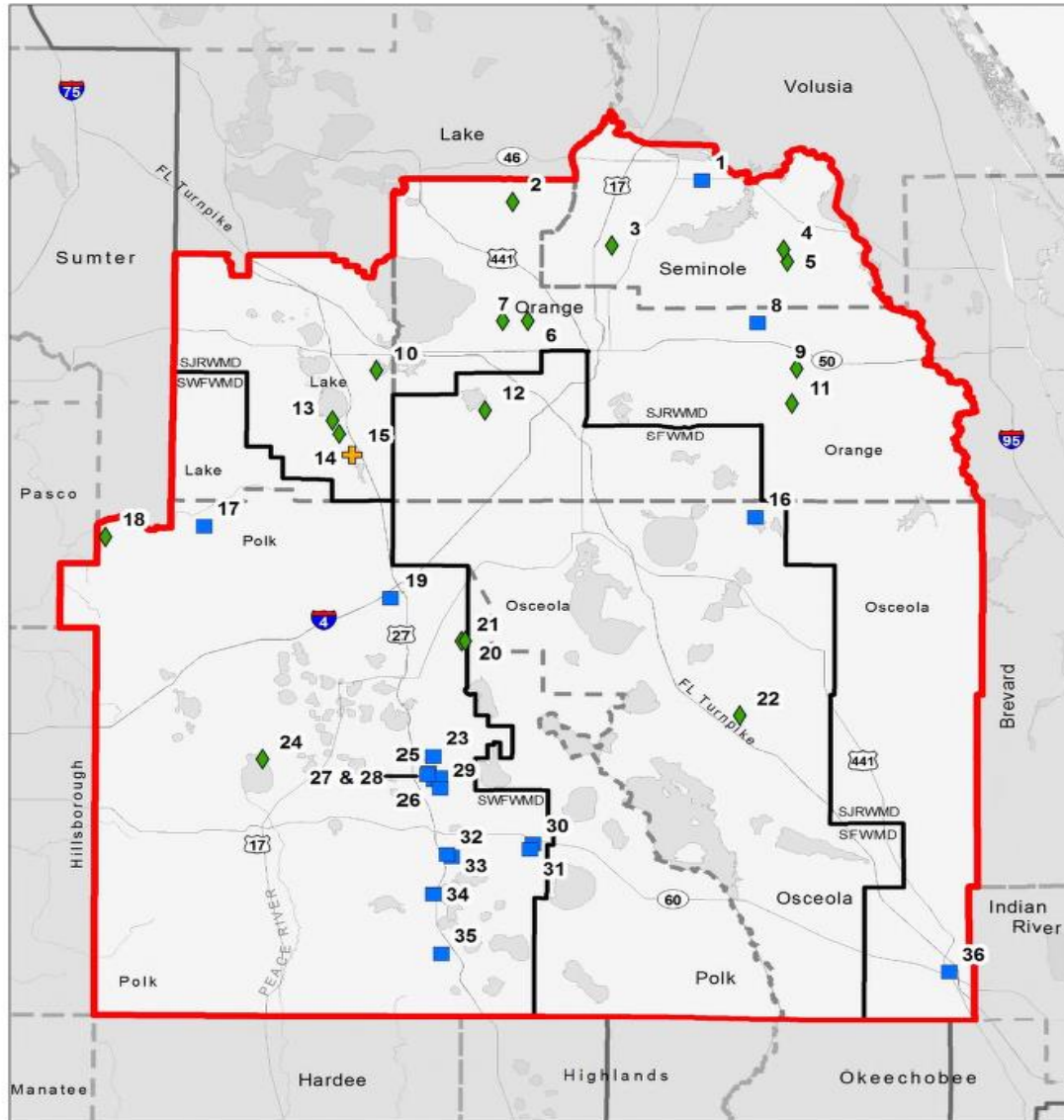
2016 Work Plan Update

Fiscal Year	Wetland Sites/SA	SA/IA Wells	UFA/APPZ Wells	LFA Wells	Annual Total
2015	0	2	2	1	5
2016	19	11	8	2	40
2017	27	20	11	4	62
2018 - 2020	61	87	19	22	189
TOTAL:	107	120	40	29	296

Fiscal Year	Total Implementation Costs
2015	\$0.55
2016	\$2.04
2017	\$9.43
2018 - 2020	\$21.14
TOTAL:	\$33.16



Central Florida Water Initiative



Fiscal Year 2017 Identified Monitoring Construction Sites

CFWI Boundary	Water Level Monitoring
County Boundaries	Wetlands Monitoring
Water Management District Boundaries	Wetlands/Minimum Flows and Levels Monitoring

(15) Map ID in Table

H:\GIS\2016_P\Projects\WO_2390_CM\IT_WP_Maps\MXD - cseminger

Items completed or in progress - FY 2017

- Inter-District meeting on January 4th & March 6th
- DMIT Main lead – Dwight Jenkins
- DMIT District leads
 - SJRWMD – Dwight Jenkins
 - SWFWMD – Sandie Will
 - SFWMD – Kris Esterson
- Will meet every 2 months, greater frequency as we approach Work Plan update deadline
- DMIT Work Plan DB will be available to WMDs in centralized location for update

- Assigned leads to various tasks listed in Work Plan
 - DMIT Data Inventory
 - GIS Analysis
 - Electronic Database for wetland field reports

- State Lands Issue

- No blanket easement possible, as individual management units must give approval
- Joe Quinn of SWF worked with State Lands to develop modified upland easement form

- SWF update

- 9 wetland sites chosen on WMD and State lands, exploratory coring and testing underway at 2 LFA sites

- One site acquisition completed at Lake Amoret, well construction planning underway
- Site acquisition underway at several other lake sites
- SJR update
 - Pine Island surficial and UFA completed
 - Easement agreement signed for Scrub Pointe cluster well/wetland location on Johns Lake
 - Working on access at Yeehaw Junction for cluster well site
 - Econ sandhills site – working to construct LFA well, SA and UFA existing

- Set-up 4 wetland monitoring sites (Prairie Lake and Little Big Econ sites) and included one existing CUP wetland site at Round Lake
- Installed 2 SA monitoring wells at Little Big Econ sites
- 8 proposed wetland sites have been identified to complete the FY2017 target of 12 sites. Access authorization for sites is on-going.

■ SF Update

- Deseret – Lake Myrtle – UFA well, SOW complete, ready to go to bid, SA and dual-zone LFA SOW 95% complete
- OUC sub-station 19 – UFA well, SOW complete
- OSF53 – Retrofit and UFA well and APT, SOW development pending project go-ahead

Central Florida Water Initiative

Status of DMIT Sites:

	Wetland Sites	SA/IA Wells	UFA/APPZ Wells	LFA Wells	Total
FY 2016 Goals per Workplan	19	11	8	2	40
Sites Completed	13	12	7	3	34
Percent Completed	68%	109%	88%	150%	85%
FY 2017 Goals per Workplan	27	20	11	4	62
Sites Completed	5	3	2	0	10
Percent Completed	19%	15%	18%	0	16%
In Progress	17	25	12	6	60
Percent Complete and in Progress	81%	140%	127%	150%	113%

Factors Influencing Implementation

- Challenges in obtaining site access and legal agreements
- Limits to staff resources to manage and implement projects
- Constraints on contractor availability and performance

ACTION ITEM

- DMIT Team requests that the deadline for the next Work Plan Update be changed from July 2017 to December 2017 to:
 - Align completion of FY16/17 work efforts with the FY2017 Plan Update
 - Allow the team to adequately consider and incorporate WMD annual budgets into the FY2017 Plan Update
- * Changing deadline will not affect implementation of monitoring sites.

Questions?

