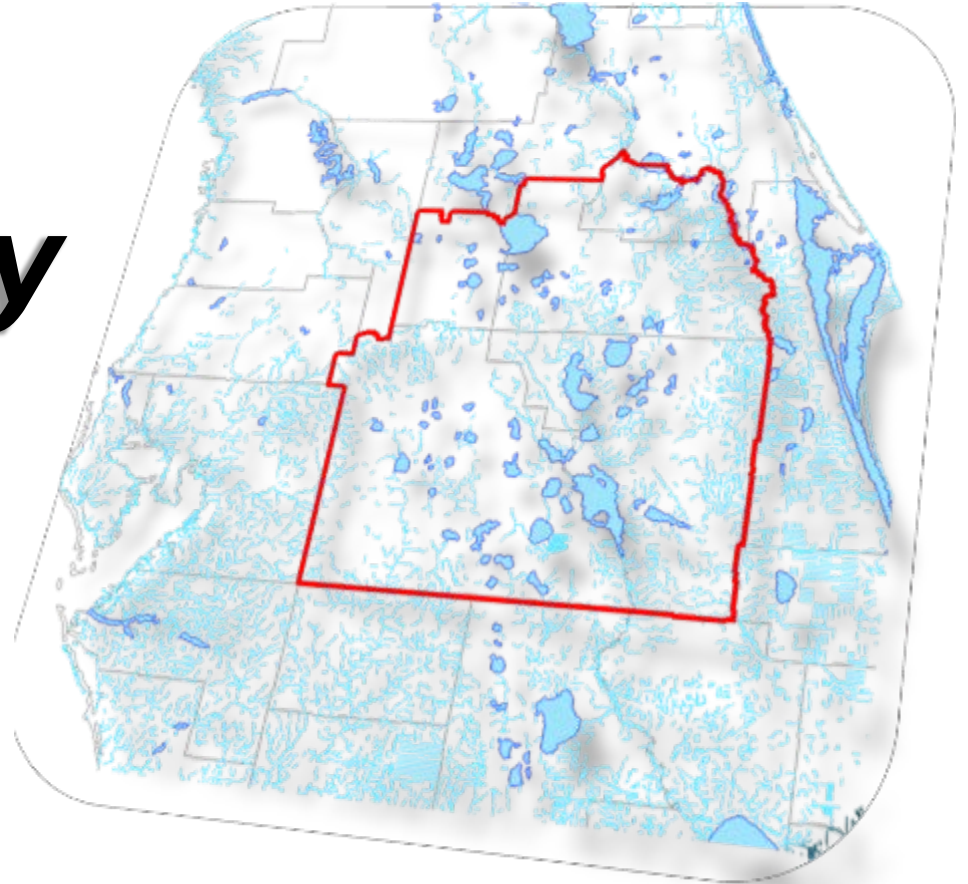


CFWI Steering Committee Meeting
January 29, 2016

Regulatory Team Update



Lennart J. Lindahl, P.E.
Regulatory Team Leader

Regulatory Topics

- **Following Dec 2013 FDEP Guidance Memo**
 - WMD coordination on pending applications
 - Review of permit duration
 - Water conservation criteria
- **Reporting consumptive use data**
 - Updated list of pending consumptive use permit applications
 - Available on www.cfwiwater.com
 - Additionally, working on tracking issued permits

CFWI Consistency

H2: Regulatory and statutory options

Identify options for uniform regulations and statutory changes as needed.

- Determine conceptual approach for rule options for each topic
- June 1, 2016
- 14 Subgroups created covering the 9 topics identified in the CFWI 2020 Guiding Document
- Membership from:
 - Florida Department of Environmental Protection
 - Florida Department of Agriculture and Consumer Services
 - Environmental Community
 - Public Water Supply Utilities
 - Industrial/Commercial/Institutional Self Supply
 - South Florida Water Management District
 - St. Johns River Water Management District
 - Southwest Florida Water Management District

CFWI Consistency

- **Conditions for issuance**
SJRWMD - Mary Ellen Winkler
- **Uniform definition of harm**
FDEP - Janet Llewellyn
- **Uniform demand calculations**
Utility - Krystal Azzarella & Terry McCue
Agriculture – Rebecca Elliott (FDACS)
Industrial/Commercial – Eric Olsen
- **Uniform conservation requirements**
Utility - Christine Russell & Mike Sweeney
Agriculture - Rebecca Elliott (FDACS)
Industrial/Commercial – Eric Olsen
- **Use of MFLs and reservations in the permitting process**
FDEP - Janet Llewellyn
- **Single permitting model tool**
SFWMD - Steven Memberg
- **Permitting thresholds**
SFWMD - Steven Memberg
- **Permit conditions**
SWFWMD - Amy Brennan
- **Addressing potential impacts outside of the CFWI boundary**
SJRWMD - Mary Ellen Winkler

Regulatory Team

Upcoming

- Continued progress on regulatory topics
- Meetings set for 2016



Kelly Park / Rock Springs